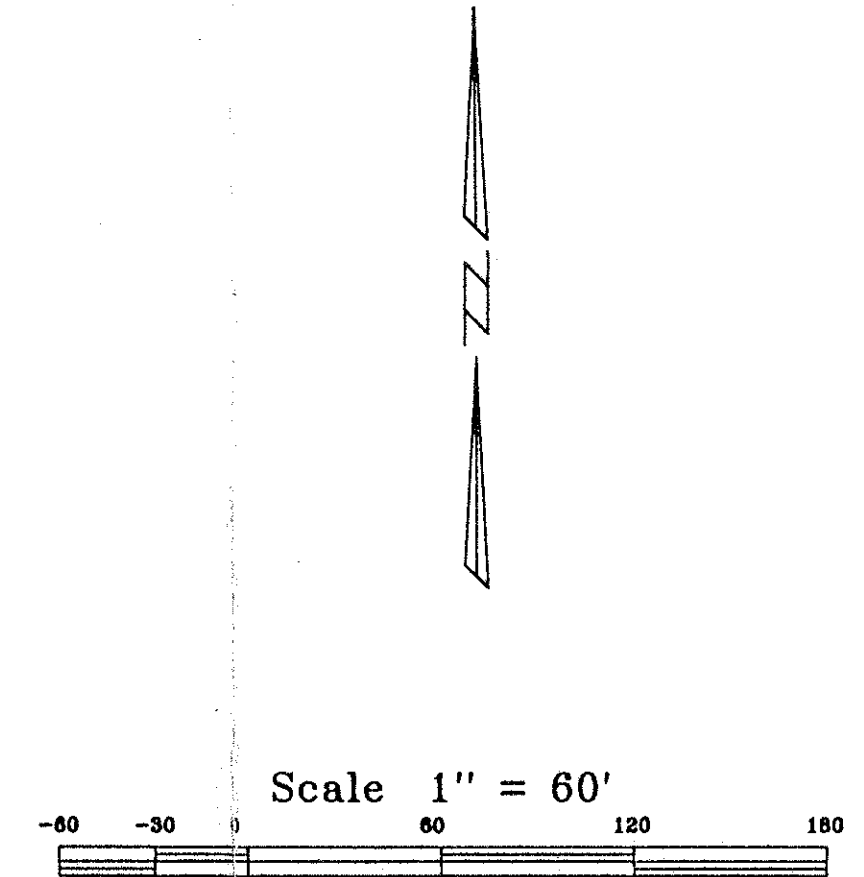


THE PLAT OF  
**PALM BEACH BEDDING CO.**  
 LYING IN SECTION 31, TOWNSHIP 42 SOUTH, RANGE 43 EAST,  
 PALM BEACH COUNTY, FLORIDA.  
 SHEET 2 OF 2 AUGUST 1996

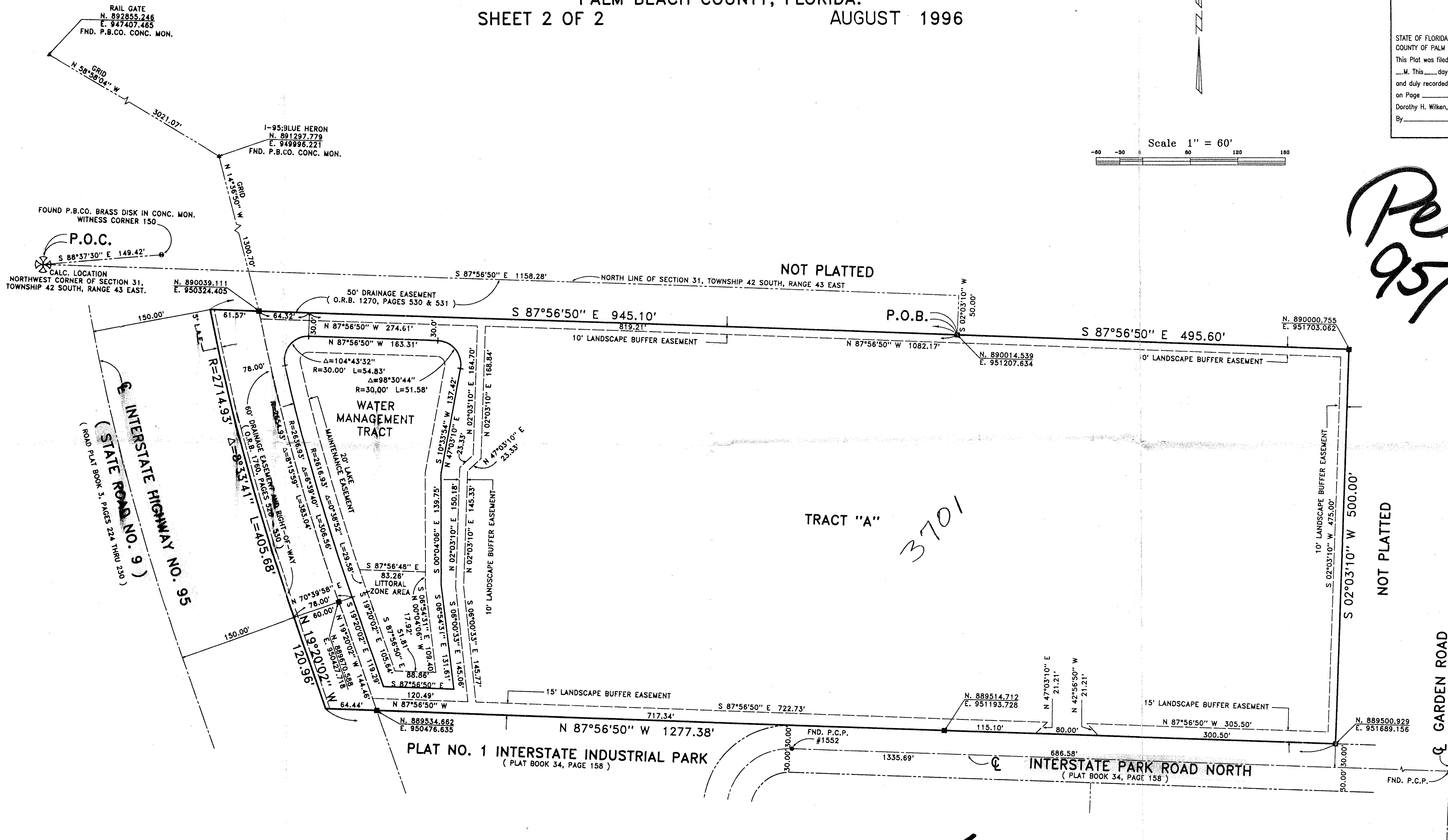
0661-001

**33**

STATE OF FLORIDA  
 COUNTY OF PALM BEACH  
 This Plat was filed for record at \_\_\_\_\_  
 M. This day of \_\_\_\_\_, 19\_\_\_\_,  
 and duly recorded in Plat Book No. \_\_\_\_\_  
 on Page \_\_\_\_\_  
 Dorothy H. Wilken, Clerk of the Circuit Court  
 By \_\_\_\_\_ D.C.



*Ret  
9/5/61*



SUBDIVISION \* Palm Beach Bedding Co.  
 BOOK 78 PAGE 33  
 FLOOD MAP #1456  
 ZONING MUPD  
 QUAD # 14  
 PUB. NAME Palm Beach Bedding Co. TAZ - 133

**COORDINATE NOTE:**  
 STATE PLANE COORDINATES SHOWN ARE GRID DATUM, NAD 83 1990  
 ADJUSTMENT, FLORIDA EAST ZONE, COORDINATE SYSTEM 1983 STATE PLANE,  
 TRANSVERSE MERCATOR PROJECTION  
 LINEAR UNIT = US SURVEY FEET  
 ALL DISTANCES ARE GROUND  
 SCALE FACTOR = 1.0000407  
 GROUND DISTANCE X SCALE FACTOR = GRID DISTANCE  
 S. 87°56'50" E. (PLAT BEARING) -00 27' 33" COUNTER CLOCKWISE  
 S. 88 24' 23" E. (GRID BEARING) BEARING ROTATION  
 (PLAT TO GRID)  
 NORTH LINE OF TRACT A AS SHOWN HEREON

*P*

*0661-001  
78/33*

Landmark Surveying & Mapping Inc.  
 1850 FOREST HILL BOULEVARD  
 PH. (407)433-5405 SUITE 100 W.P.B. FLORIDA  
**PALM BEACH BEDDING CO.**

*Recorded  
10/96*