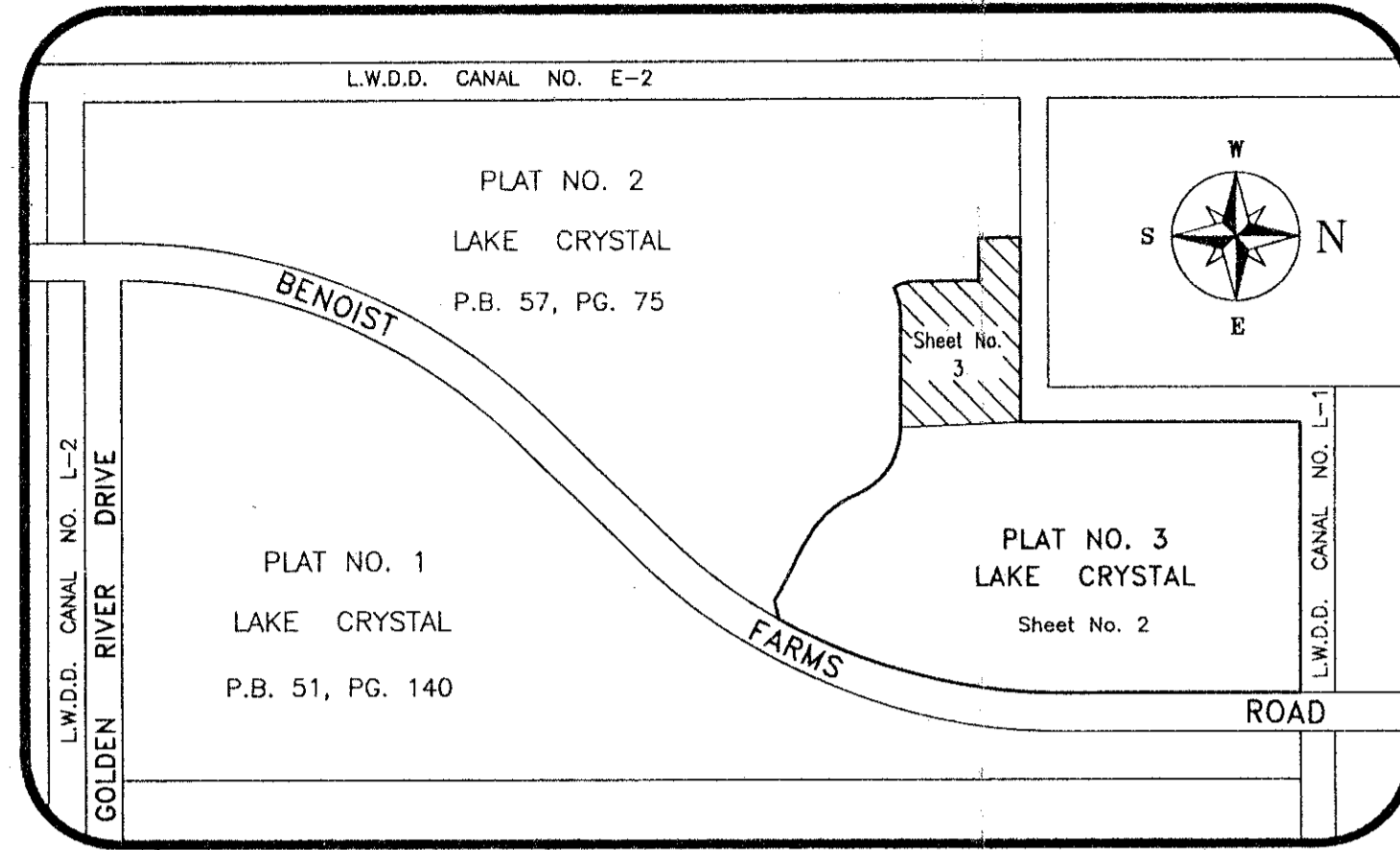


# PLAT NO. 3 OF LAKE CRYSTAL

BEING A PORTION OF GOLDEN LAKES VILLAGE, P.U.D.

BEING A REPLAT OF A PARCEL OF LAND LYING PARTIALLY IN TRACT 16, BLOCK 1, AS SHOWN ON THE PALM BEACH FARMS CO. PLAT NO. 9, AS RECORDED IN PLAT BOOK 5, PAGE 58 AND PARTIALLY IN TRACT 2, BLOCK 3, AS SHOWN ON THE PALM BEACH FARMS CO. PLAT NO. 3, AS RECORDED IN PLAT BOOK 2, PAGES 45 THRU 54 INCLUSIVE, PUBLIC RECORDS OF PALM BEACH COUNTY, FLORIDA SECTION 29, TOWNSHIP 43 SOUTH, RANGE 42 EAST SHEET 3 OF 3 AUGUST, 1996



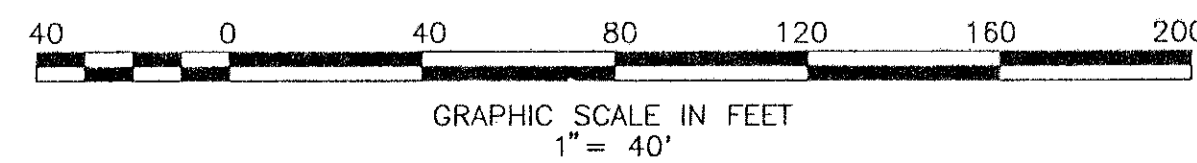
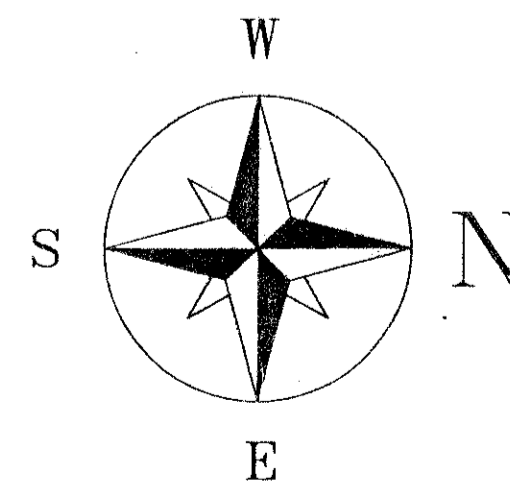
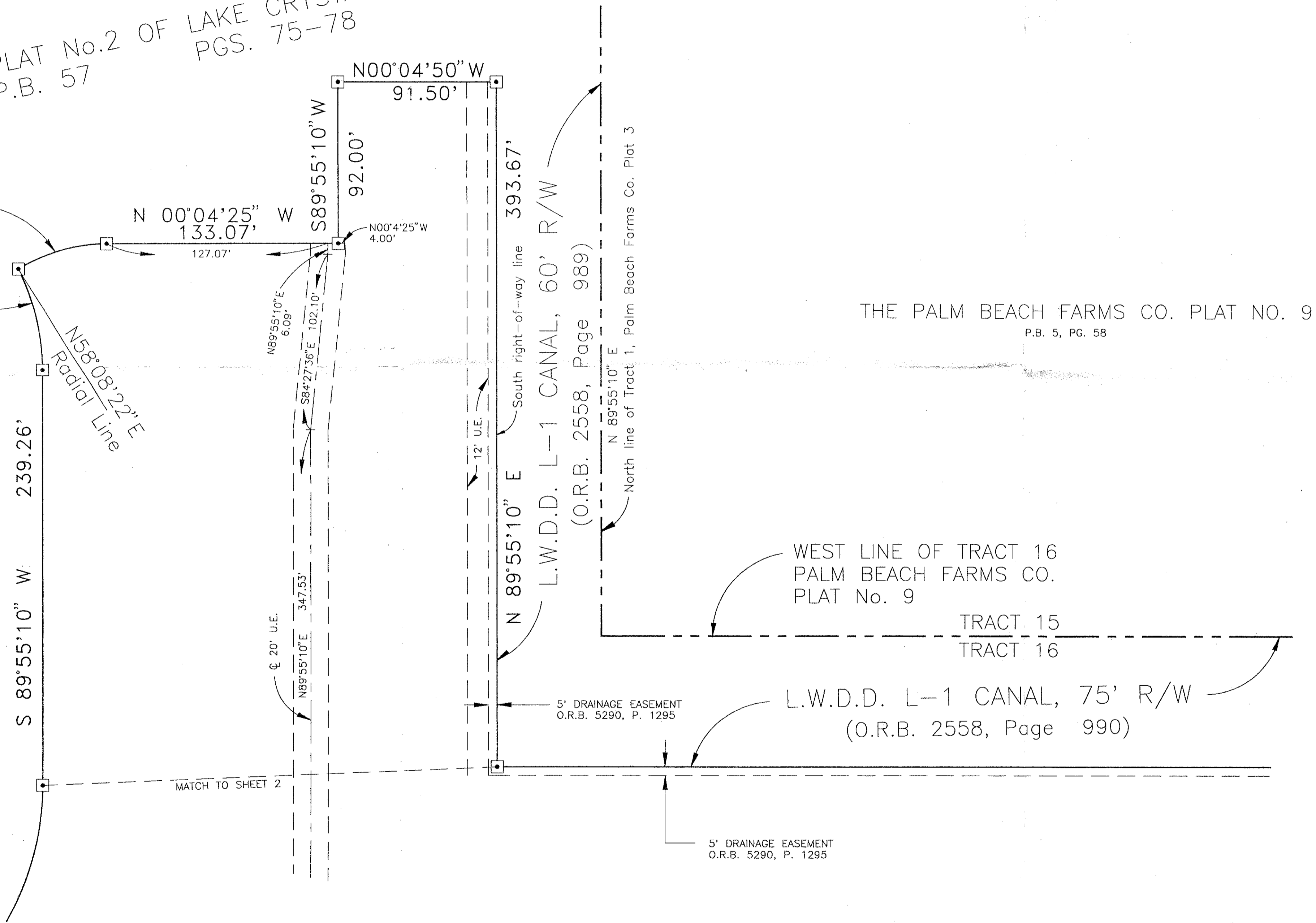
KEY MAP  
Not to Scale

PLAT No. 2 OF LAKE CRYSTAL  
P.B. 57 PGS. 75-78

LCB=N15°58'02"W  
R=96.13'  
Δ=31°47'13"  
AL=53.33'

R=132.00'  
Δ=26°20'44"  
AL=60.70'

PLAT No. 2 OF LAKE CRYSTAL  
P.B. 57 PGS. 75-78



0251-003

78/58

SUBDIVISION # 3 OF LAKE CRYSTAL  
 JOB NO. 77  
 DATE 7/15/96  
 DRAWN BY B. OWEN  
 CHECKED BY S. SHEPHERD  
 PUD NAME Golden Lakes Village  
 ZIP CODE 33411

Field Book	No. L-86 Pg. 48
Field	Matthes
Drawn	Bisport Owen
Checked	Shepherd
	Palomba

REO ENGINEERS & PLANNERS, INC.  
 1542 Donna Road  
 West Palm Beach  
 Florida  
 Telephone 561-687-0446

PLAT NO. 3 OF  
 LAKE CRYSTAL

Job No.	96-1015
Scale	1"=40'
Date	August, 1996
Sheet	3
File No.	BF-2402-B