

JONES P.U.D.

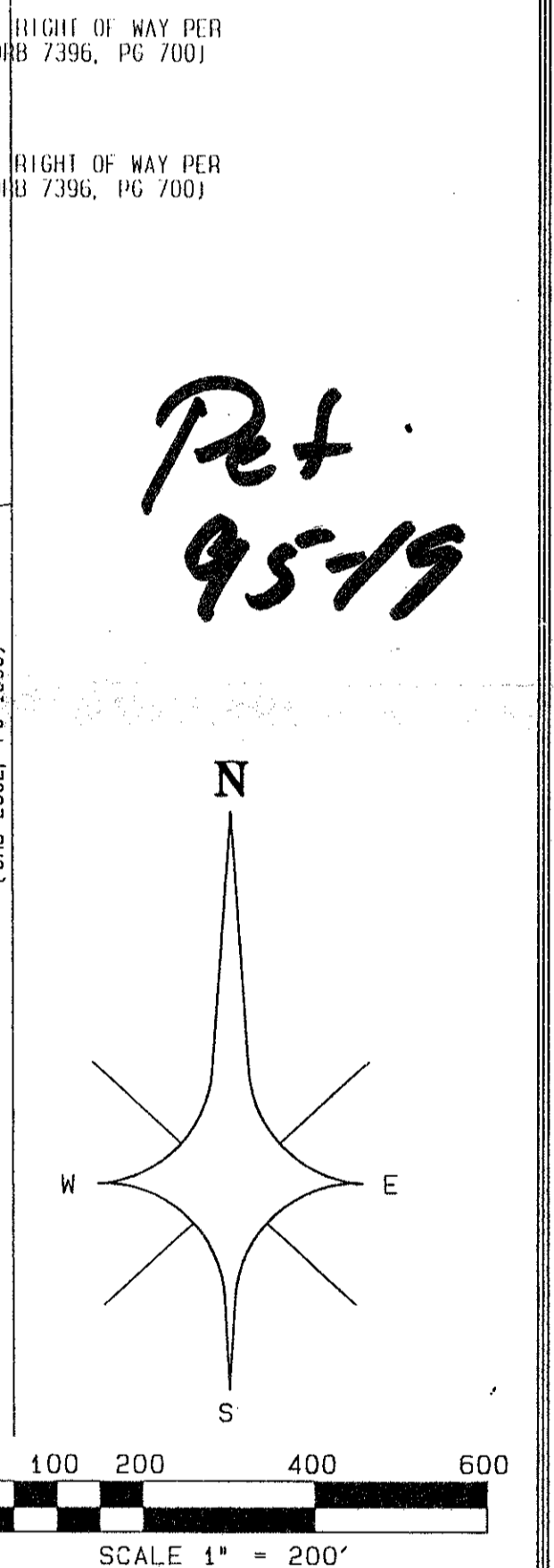
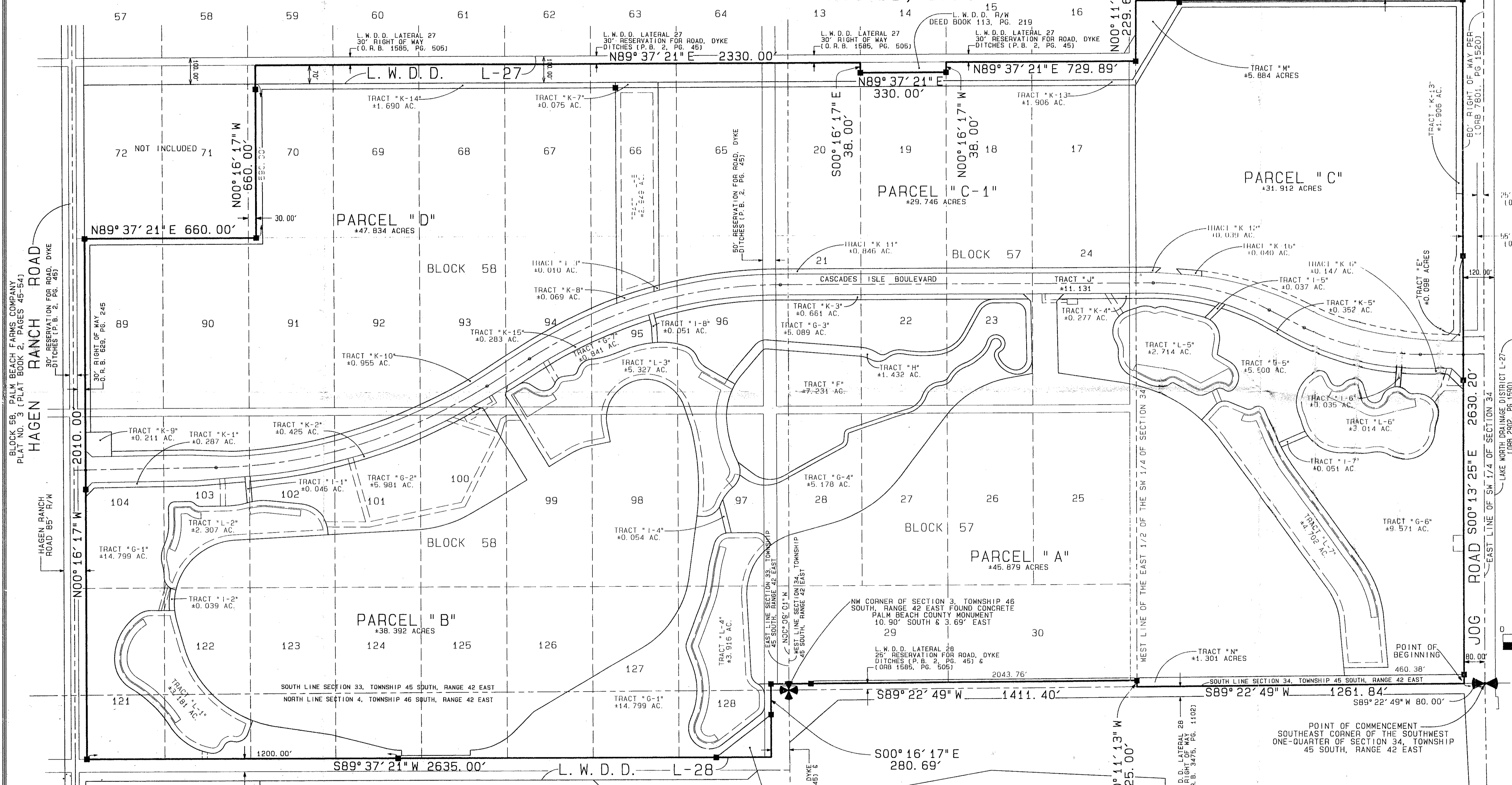
0683-001

73

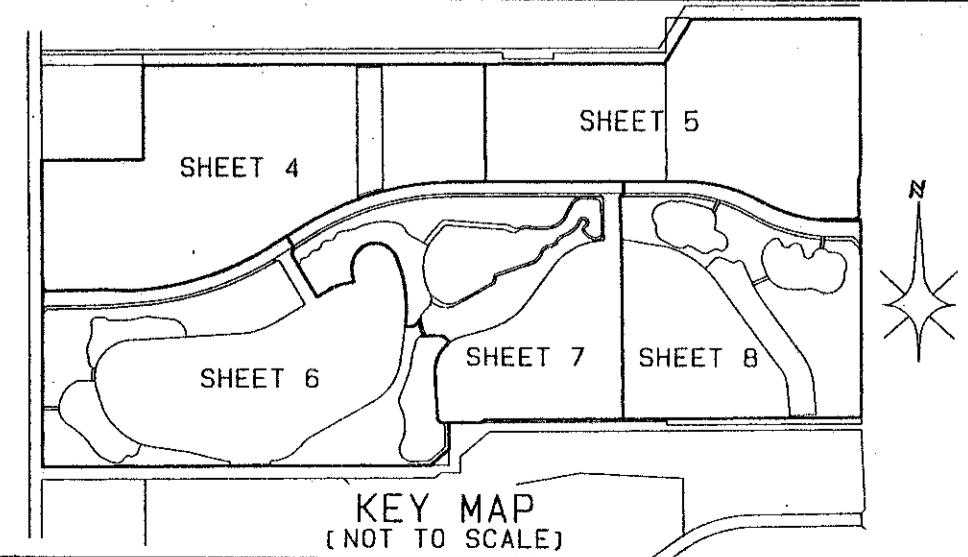
SITUATE IN SECTIONS 33 AND 34, TOWNSHIP 45 SOUTH, RANGE 42 EAST, AND SECTION 4, TOWNSHIP 46 SOUTH, RANGE 42 EAST, PALM BEACH COUNTY, FLORIDA; ALSO BEING A REPLAT OF A PORTION OF TRACTS 17 THROUGH 30, BLOCK 57; AND TRACTS 65 THROUGH 70, TRACTS 89 THROUGH 104, TRACTS 121 THROUGH 128, BLOCK 58, THE PALM BEACH FARMS COMPANY PLAT NO. 3, AS RECORDED IN PLAT BOOK 2, PAGES 45 THROUGH 54 INCLUSIVE; TOGETHER WITH A PORTION OF THE RIGHT OF WAYS ADJOINING SAID TRACTS AS SHOWN ON SAID PLAT OF PALM BEACH FARMS COMPANY PLAT NO. 3
 SHEET 3 OF 8

AUGUST, 1996

STATE OF FLORIDA }
 COUNTY OF PALM BEACH } SS
 THIS PLAT WAS FILED FOR RECORD AT _____ DAY OF THIS _____ AD, 1996 AND DULY RECORDED IN PLAT BOOK _____ ON PAGES _____ AND _____
 DOROTHY H. WILKEN, CLERK
 CIRCUIT COURT
 BY: _____ DC



LEGEND:
 Δ = CENTRAL ANGLE/Delta
 C = CENTERLINE
 CH = CHORD
 D.B. = DEED BOOK
 D.E. = DRAINAGE EASEMENT
 F.P. & L. = FLORIDA POWER AND LIGHT COMPANY
 L = ARC LENGTH/ARC DISTANCE
 L.A.E. = LIMITED ACCESS EASEMENT
 L.M.E. = LAKE MAINTENANCE EASEMENT
 L.M.A.E. = LAKE MAINTENANCE ACCESS EASEMENT
 L.W.D. = LAKE WORTH DRAINAGE DISTRICT
 N.R. = NON-RADIAL
 N.T.S. = NOT TO SCALE
 O.R.B. = OFFICIAL RECORDS BOOK
 P.B. = PLAT BOOK
 Pg. = PAGE
 P.O.B. = POINT OF BEGINNING
 P.O.C. = POINT OF COMMENCEMENT
 R = RADIUS (RADI)
 R.F. = RADIAL TO FRONT LOT LINE
 R.R. = RADIAL TO REAR LOT LINE
 R/W = RIGHT OF WAY
 U.E. = UTILITY EASEMENT
 W.C. = WITNESS CORNER
 ○ = PERMANENT CONTROL POINT (PCP)
 PCP #4380
 ■ = PERMANENT REFERENCE MONUMENT (PRM)
 SET PRM #4380 (UNLESS NOTED)



SUBDIVISION: JONES PUD
 BOOK 78 PAGE 73
 FLOOD ZONE: AHB
 FLOOD MAP: 200A
 ZONING: PDD
 QUAD: 50
 SE
 ZIP CODE: 33437
 PUD NAME: JONES PUD
 TAZ: 452

0683-001 78-73

PROFESSIONAL SURVEYORS AND MAPPERS
 ATLANTIC - CARIBBEAN MAPPING, INC.
 3062 JOG ROAD - GREENACRES, FLORIDA 33467
 (561) 964-7884; FAX (561) 964-1969