

JONES P.U.D.

0683-001

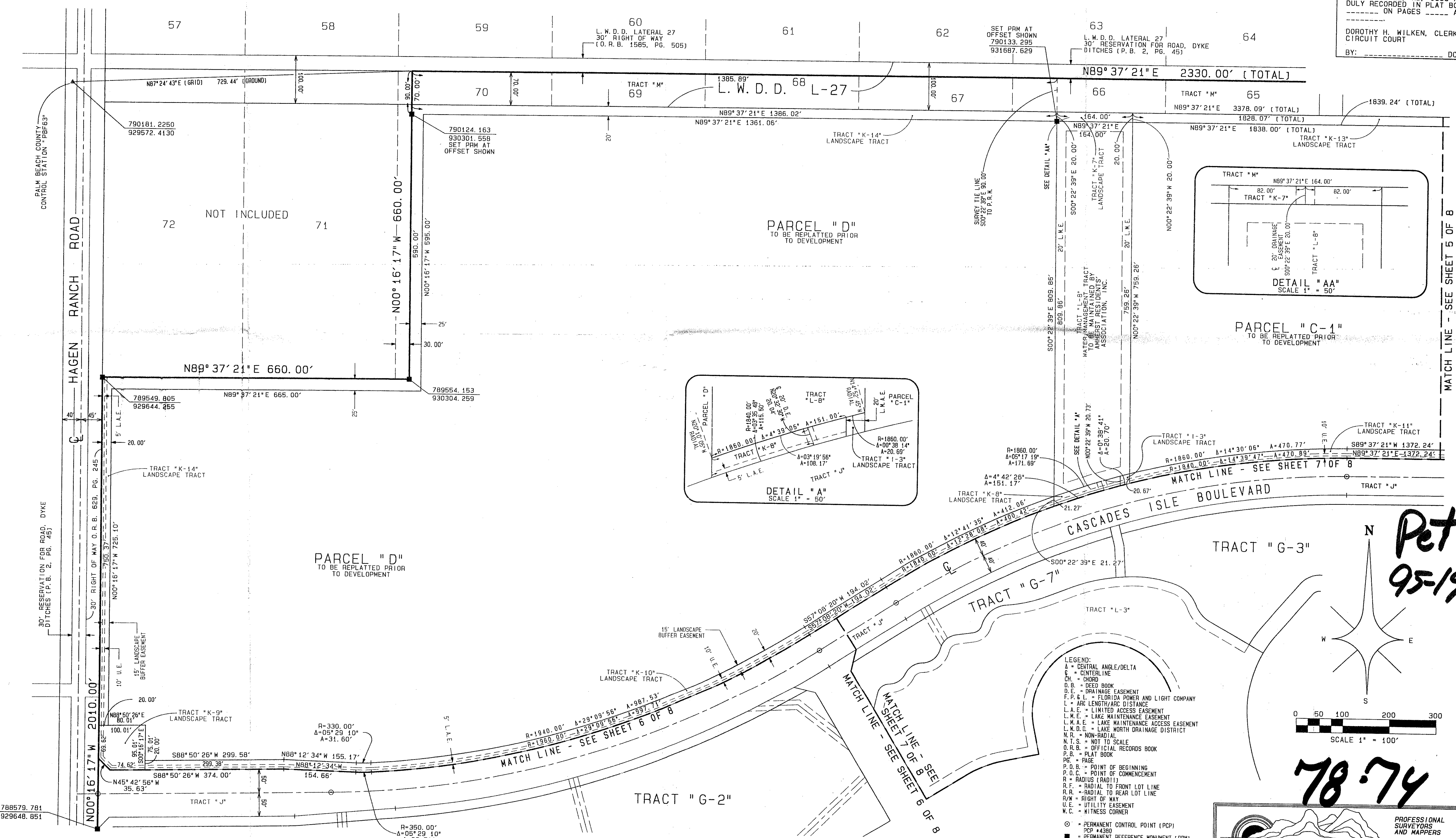
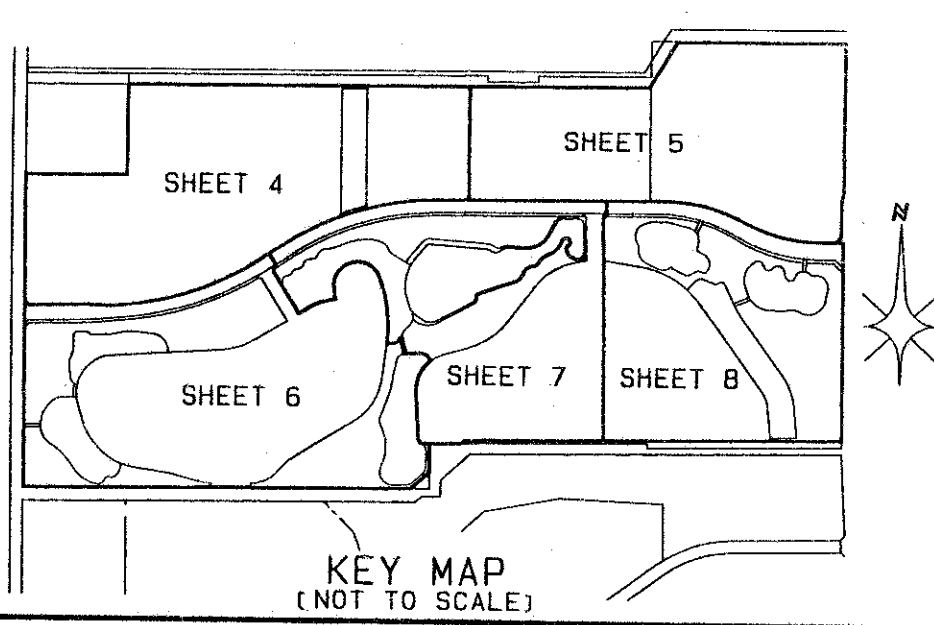
74

SITUATE IN SECTIONS 33 AND 34, TOWNSHIP 45 SOUTH, RANGE 42 EAST, AND SECTION 4, TOWNSHIP 46 SOUTH, RANGE 42 EAST, PALM BEACH COUNTY, FLORIDA; ALSO BEING A REPLAT OF A PORTION OF TRACTS 17 THROUGH 30, BLOCK 57; AND TRACTS 65 THROUGH 70, TRACTS 89 THROUGH 104, TRACTS 121 THROUGH 128, BLOCK 58, THE PALM BEACH FARMS COMPANY PLAT NO. 3, AS RECORDED IN PLAT BOOK 2, PAGES 45 THROUGH 54 INCLUSIVE; TOGETHER WITH A PORTION OF THE RIGHT OF WAYS ADJOINING SAID TRACTS AS SHOWN ON SAID PLAT OF PALM BEACH FARMS COMPANY PLAT NO. 3 SHEET 4 OF 8

SAID PLAT OF PALM BEACH FARMS COMPANY PLAT NO. 3
AUGUST, 1996

STATE OF FLORIDA } SS
COUNTY OF PALM BEACH }
THIS PLAT WAS FILED FOR
RECORD AT _____ DAY OF
THIS _____ AD, 1996 AND
DULY RECORDED IN PLAT BOOK
_____ ON PAGES _____ AND

DOROTHY H. WILKEN, CLERK
CIRCUIT COURT
BY: _____ DC



SUBDIVISION * JONES P.U.D.
PAGE 74
BOOK 78 FLOOD MAP # 200A
ZONING PDD
QUAD # 50
SE
PUD NAME JONES P.U.D.
ZIP CODE 33437

TAZ - 4152

MATCH LINE - SEE SHEET 5 OF 8

Pet
95-19

78-74

0683-001

- LEGEND:
- ∠ = CENTRAL ANGLE/Delta
 - C = CENTERLINE
 - CH = CHORD
 - D.B. = DEED BOOK
 - D.E. = DRAINAGE EASEMENT
 - F.P. & L. = FLORIDA POWER AND LIGHT COMPANY
 - L = ARC LENGTH/ARC DISTANCE
 - L.A.E. = LIMITED ACCESS EASEMENT
 - L.M.E. = LAKE MAINTENANCE EASEMENT
 - L.M.A.E. = LAKE MAINTENANCE ACCESS EASEMENT
 - L.M.D.L. = LAKE NORTH DRAINAGE DISTRICT
 - N.R. = NON-RADIAL
 - N.T.S. = NOT TO SCALE
 - D.H.B. = OFFICIAL RECORDS BOOK
 - P.B. = PLAT BOOK
 - PG. = PAGE
 - P.D.B. = POINT OF BEGINNING
 - P.O.C. = POINT OF COMMENCEMENT
 - R = RADIUS (RADII)
 - R.F. = RADIAL TO FRONT LOT LINE
 - R.R. = RADIAL TO REAR LOT LINE
 - R/W = RIGHT OF WAY
 - U.E. = UTILITY EASEMENT
 - W.C. = WITNESS CORNER

ATLANTIC - CARIBBEAN MAPPING, INC.
3062 JOG ROAD - GREENACRES, FLORIDA 33467
(561) 964-7884; FAX (561) 964-1969