

JONES P.U.D.

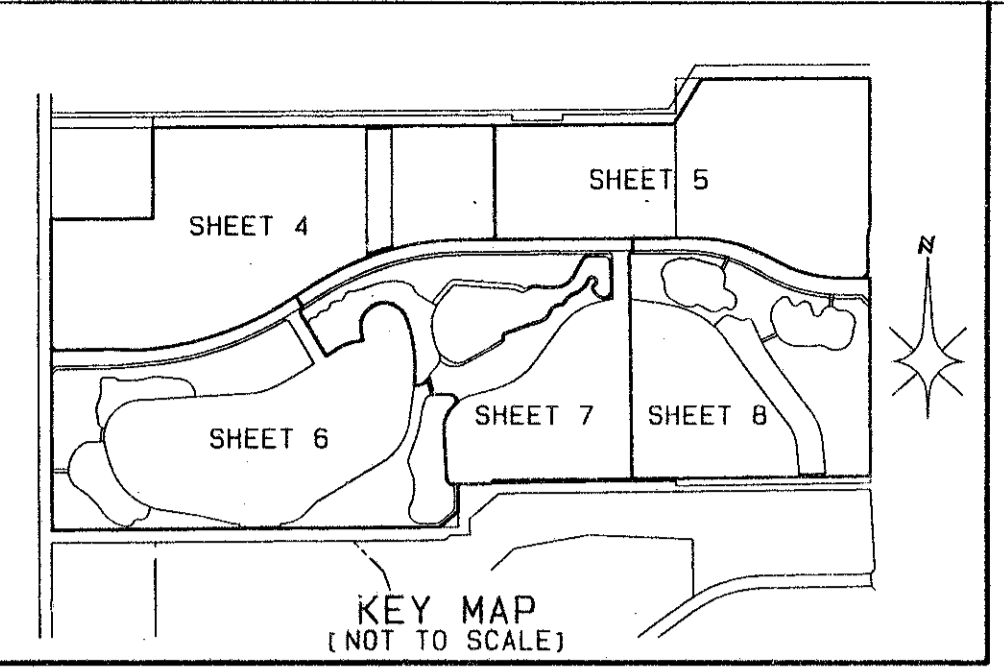
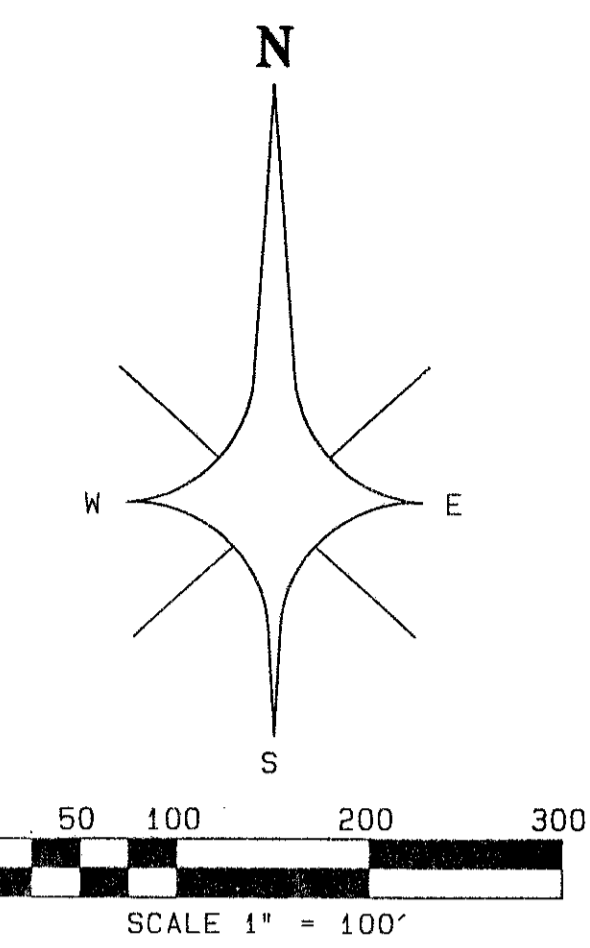
SITUATE IN SECTIONS 33 AND 34, TOWNSHIP 45 SOUTH, RANGE 42 EAST, AND SECTION 4, TOWNSHIP 46 SOUTH, RANGE 42 EAST, PALM BEACH COUNTY, FLORIDA; ALSO BEING A REPLAT OF A PORTION OF TRACTS 17 THROUGH 30, BLOCK 57; AND TRACTS 65 THROUGH 70, TRACTS 89 THROUGH 104, TRACTS 121 THROUGH 128, BLOCK 58, THE PALM BEACH FARMS COMPANY PLAT NO. 3, AS RECORDED IN PLAT BOOK 2, PAGES 45 THROUGH 54 INCLUSIVE; TOGETHER WITH A PORTION OF THE RIGHT OF WAYS ADJOINING SAID TRACTS AS SHOWN ON SAID PLAT OF PALM BEACH FARMS COMPANY PLAT NO. 3
SHEET 6 OF 8
 AUGUST, 1996

0683-001

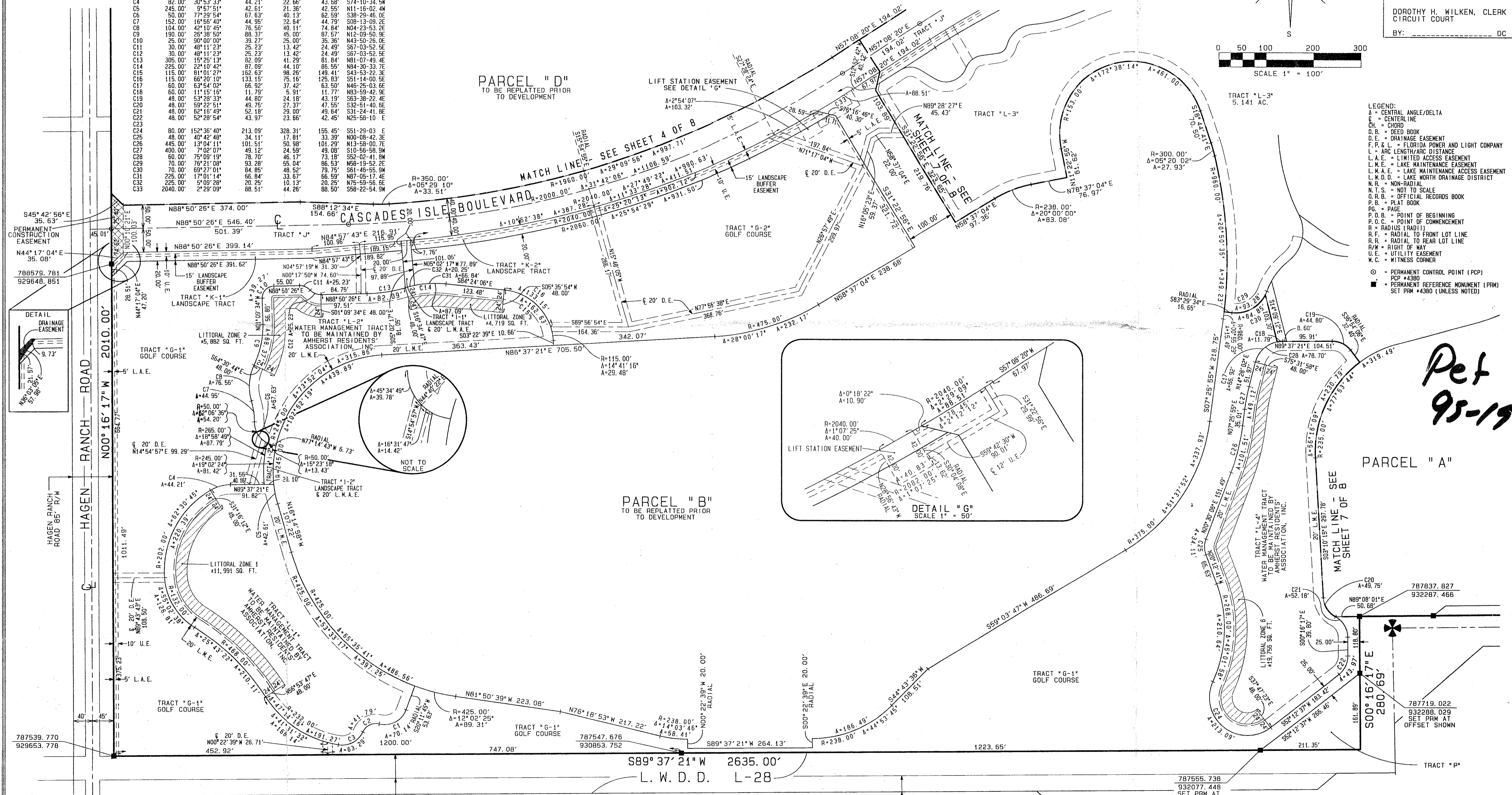
76

STATE OF FLORIDA } SS
 COUNTY OF PALM BEACH }
 THIS PLAT WAS FILED FOR
 RECORD AT _____ DAY OF
 _____ AD, 1996 AND
 DULY RECORDED IN PLAT BOOK
 _____ ON PAGES _____ AND

 DOROTHY H. WILKEN, CLERK
 CIRCUIT COURT
 BY: _____ DC



Curve	Radius	Delta	Length	Tangent	Chord	Bearing
C1	48.00'	83°43'33"	70.14'	43.01'	64.07'	S62°03'32" W
C2	30.00'	79°48'47"	41.79'	25.09'	38.49'	S64°00'55" W
C3	48.00'	75°32'59"	63.29'	37.20'	58.81'	S61°53'01" W
C4	82.00'	30°53'33"	44.21'	22.86'	43.68'	S74°10'34" W
C5	245.00'	9°57'51"	42.61'	21.38'	42.58'	N11°16'02" W
C6	50.00'	77°29'54"	67.63'	40.13'	62.59'	S38°29'46" E
C7	152.00'	16°56'40"	44.95'	22.64'	44.79'	S08°13'09" E
C8	104.00'	42°10'45"	76.56'	40.11'	74.84'	N04°23'53" E
C9	190.00'	26°38'50"	88.37'	45.00'	67.57'	N12°09'50" E
C10	25.00'	90°00'00"	39.27'	25.00'	35.36'	N43°50'26" E
C11	30.00'	48°11'23"	28.23'	13.42'	24.49'	S67°03'50" E
C12	30.00'	48°11'23"	28.23'	13.42'	24.49'	S67°03'50" E
C13	305.00'	15°25'13"	82.09'	41.29'	61.84'	N81°07'49" E
C14	225.00'	22°10'42"	87.09'	44.10'	66.55'	N84°30'33" E
C15	115.00'	61°01'27"	168.63'	98.26'	149.41'	S43°53'22" E
C16	115.00'	66°20'10"	131.15'	75.16'	125.83'	S51°14'00" E
C17	60.00'	63°54'02"	66.92'	37.42'	63.50'	N46°25'03" E
C18	60.00'	11°15'16"	11.79'	5.91'	11.77'	N83°59'42" E
C19	48.00'	53°28'33"	44.80'	24.18'	43.19'	S63°36'23" E
C20	48.00'	59°22'51"	49.75'	27.37'	47.55'	S32°51'40" E
C21	48.00'	62°16'49"	52.18'	29.00'	49.64'	S31°24'41" E
C22	48.00'	52°28'54"	43.97'	23.66'	42.45'	N25°58'10" E
C23	80.00'	152°36'40"	213.09'	328.31'	155.45'	S51°29'03" E
C24	48.00'	40°42'48"	34.11'	17.81'	33.39'	N00°09'42" E
C25	445.00'	13°04'11"	101.51'	50.80'	101.29'	N13°58'00" E
C26	400.00'	7°02'07"	48.12'	24.89'	45.08'	S10°56'58" E
C27	60.00'	75°09'19"	78.70'	46.17'	73.18'	S52°02'41" W
C28	70.00'	78°21'08"	93.28'	55.04'	86.53'	N59°19'52" E
C29	70.00'	69°57'21"	84.80'	48.52'	78.75'	S51°46'55" W
C30	225.00'	17°01'14"	66.84'	33.57'	66.59'	N87°05'17" E
C31	225.00'	5°09'28"	20.25'	10.13'	20.25'	N75°59'56" E
C32	2040.00'	2°29'09"	88.51'	44.26'	88.50'	S58°22'54" W



- LEGEND:
- A = CENTRAL ANGLE/Delta
 - C = CENTERLINE
 - Ch = CHORD
 - D.B. = DEED BOOK
 - D.E. = DRAINAGE EASEMENT
 - F.P. & L. = FLORIDA POWER AND LIGHT COMPANY
 - L = LENGTH/ARC DISTANCE
 - L.A.E. = LIMITED ACCESS EASEMENT
 - L.M.E. = LAKE MAINTENANCE EASEMENT
 - L.M.A.E. = LAKE MAINTENANCE ACCESS EASEMENT
 - L.N.D. = LAKE NORTH DRAINAGE DISTRICT
 - N.R. = NON-RADIAL
 - N.T.S. = NOT TO SCALE
 - O.R.B. = OFFICIAL RECORDS BOOK
 - P.B. = PLAT BOOK
 - Pg. = PAGE
 - P.O.B. = POINT OF BEGINNING
 - P.C.M. = POINT OF COMMENCEMENT
 - R = RADIUS (RADIUS)
 - R.F. = RADIAL TO FRONT LOT LINE
 - R.R. = RADIAL TO REAR LOT LINE
 - R/W = RIGHT OF WAY
 - U.E. = UTILITY EASEMENT
 - W.C. = WITNESS CORNER
 - = PERMANENT CONTROL POINT (PCP)
 - PCP #4380
 - = PERMANENT REFERENCE MONUMENT (PRM)
 - SET PRM #4380 (UNLESS NOTED)

Pet 95-19

SUBDIVISION: JONES PUD
 BOOK 78 PAGE 76
 FLOOD ZONE: ARHS FLOOD MAP #200A
 ZONING: PDD
 QUAD: 50
 SE
 PUD NAME: JONES PUD
 ZIP CODE: 33437

TAZ-452

0683-001 78-76