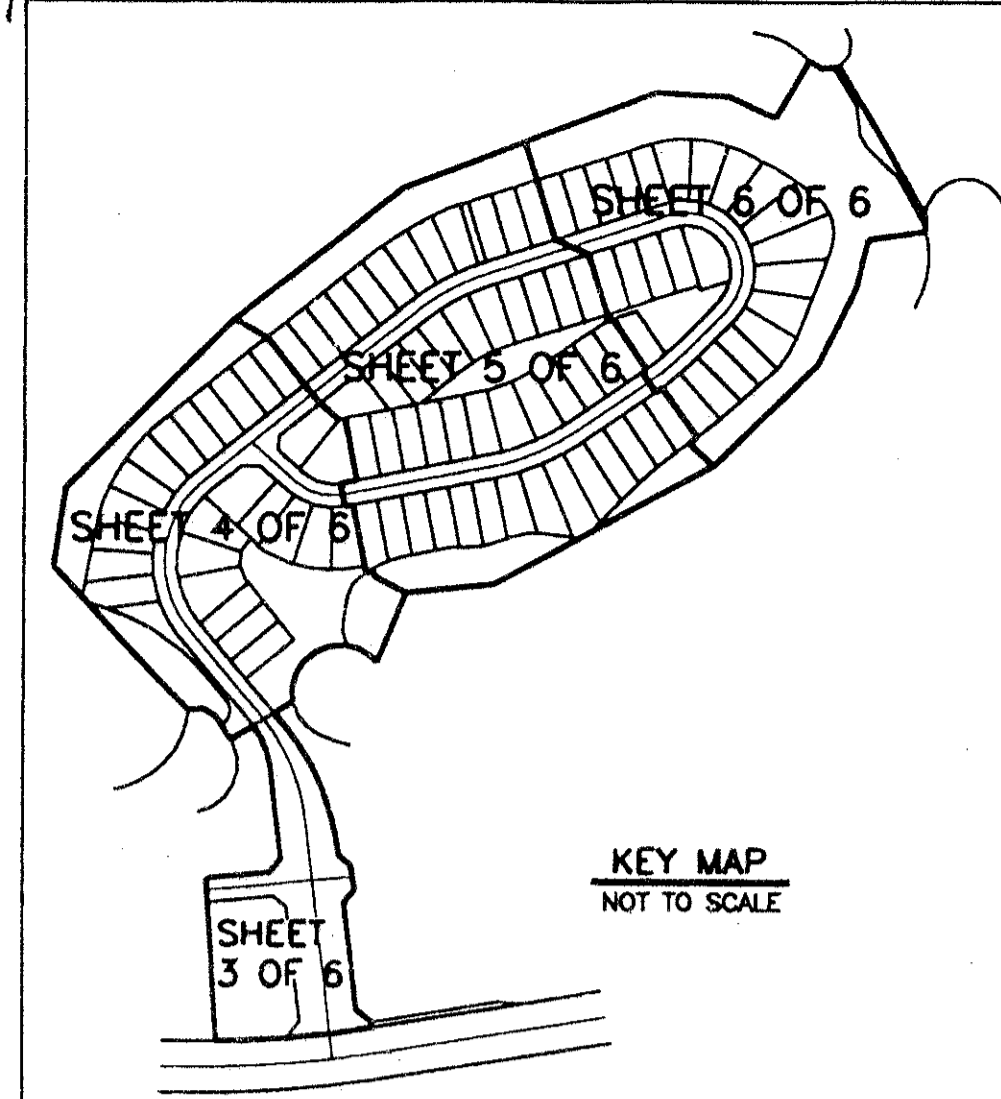


ABERDEEN - PLAT NO. 25

A PORTION OF A PLANNED UNIT DEVELOPMENT
 LYING IN SECTIONS 15 AND 16, TOWNSHIP 45 SOUTH, RANGE 42 EAST
 BEING A REPLAT OF A PORTION OF ABERDEEN - PLAT NO. 2 AS RECORDED IN PLAT
 BOOK 55, PAGES 11 THRU 22, PUBLIC RECORDS OF PALM BEACH COUNTY, FLORIDA
 SHEET 5 OF 6
 MARCH, 1996

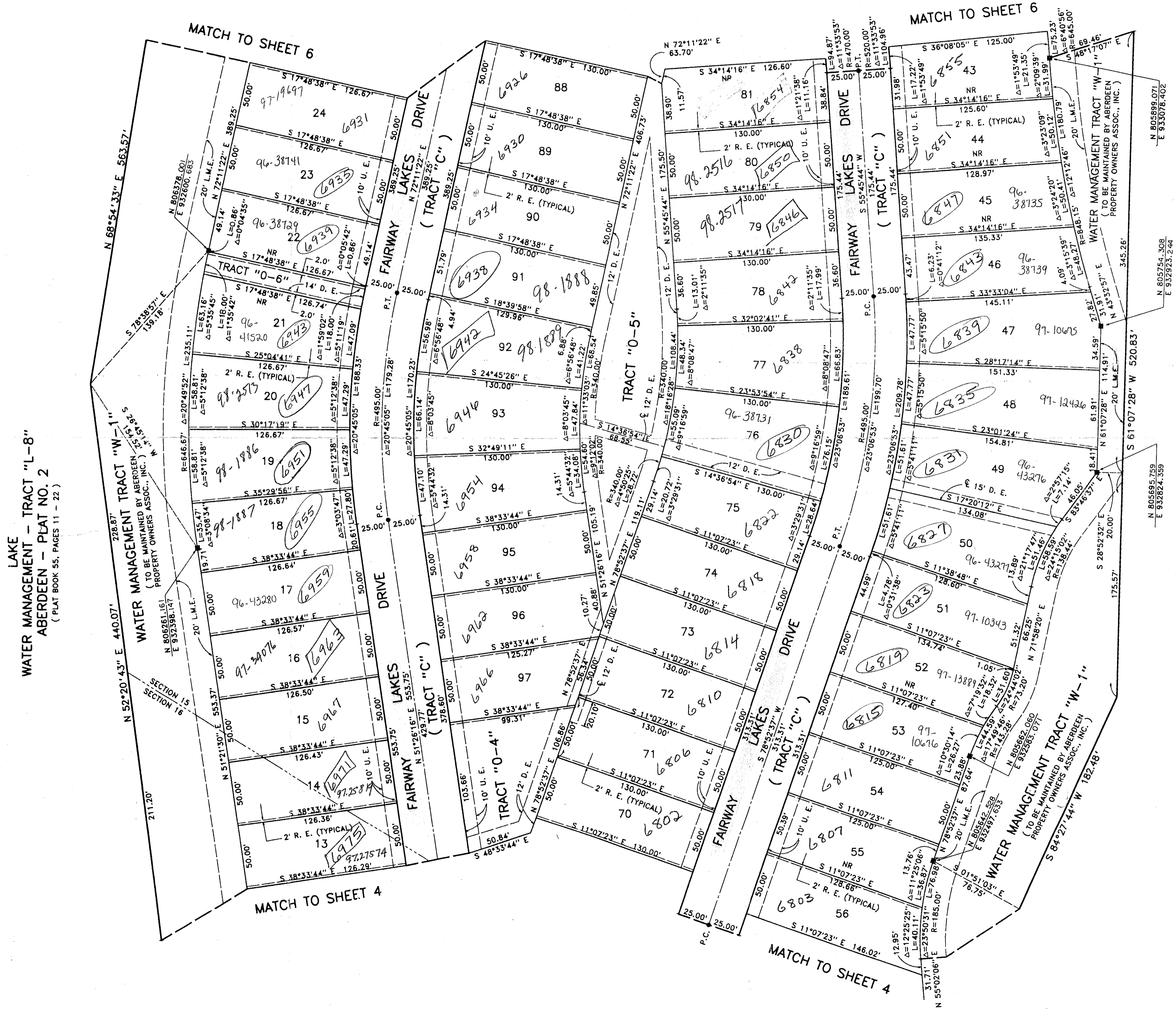
0270-029

100



STATE OF FLORIDA
 COUNTY OF PALM BEACH
 This Plat was filed for record at _____
 M. This day of _____, 19____,
 and duly recorded in Plat Book No. _____
 on Page _____
 Dorothy H. Wilken, Clerk of the Circuit Court
 By _____ D.C.

SUBDIVISION # ABERDEEN
 BOOK 78 PAGE 100
 FLOOD MAP # 185A
 CHAS # 49 ZONING RS
 CC 80-153 ZIF 001833437
 PUD NAME ABERDEEN

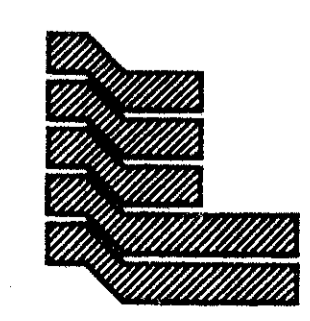
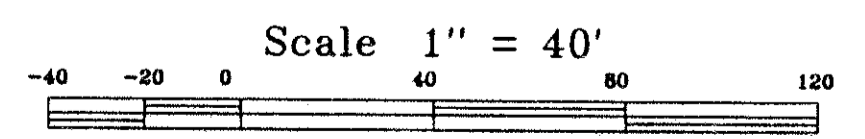


LAKE WATER MANAGEMENT - TRACT "L-9"
 ABERDEEN - PLAT NO. 2
 (PLAT BOOK 55, PAGES 11 - 22)

Pet
80-153

COORDINATE NOTE:
 STATE PLANE COORDINATES SHOWN ARE GRID DATUM, NAD 83 1990
 ADJUSTMENT, FLORIDA EAST ZONE, COORDINATE SYSTEM 1983 STATE
 PLANE TRANSVERSE MERCATOR PROJECTION.
 LINEAR UNIT = US SURVEY FEET
 ALL DISTANCES ARE GROUND
 SCALE FACTOR = 1.0000288
 GROUND DISTANCE X SCALE FACTOR = GRID DISTANCE
 N 88°22'07"W (PLAT BEARING) -01°45'15" COUNTER CLOCKWISE
 S 89°52'38"W (GRID BEARING) BEARING ROTATION
 (PLAT TO GRID)
 THE SOUTH LINE OF SECTION 16, TOWNSHIP 45 SOUTH, RANGE 42 EAST
 ALSO THE SOUTH LINE OF ABERDEEN-PLAT NO. 2, AS RECORDED IN PLAT
 BOOK 55, PAGES 11-22, PUBLIC RECORDS OF PBCO, FLORIDA.

0270-029
78/100



Landmark Surveying & Mapping Inc.
 1850 FOREST HILL BOULEVARD
 PH. (407)433-5405 SUITE 100 W.P.B. FLORIDA

ABERDEEN - PLAT NO. 25