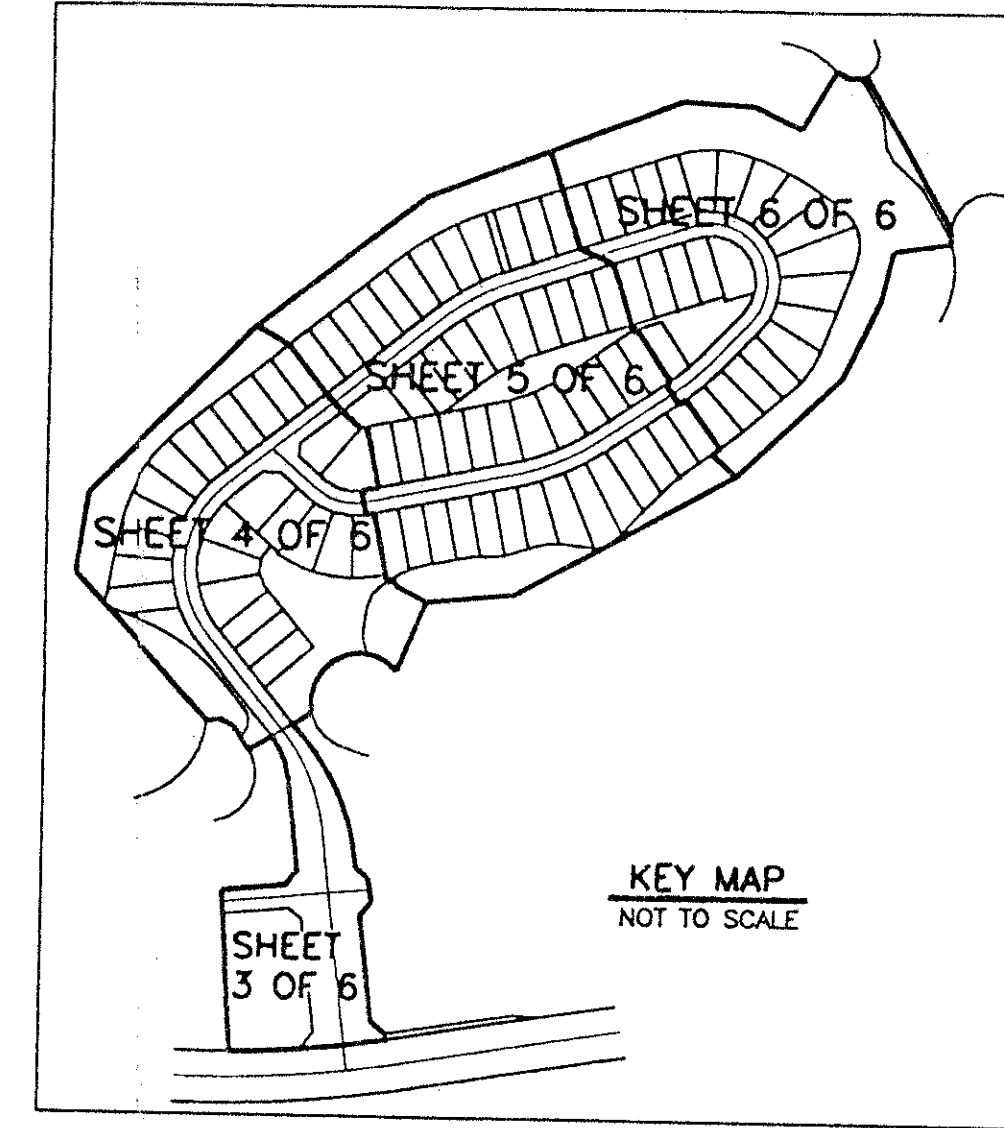


ABERDEEN - PLAT NO. 25

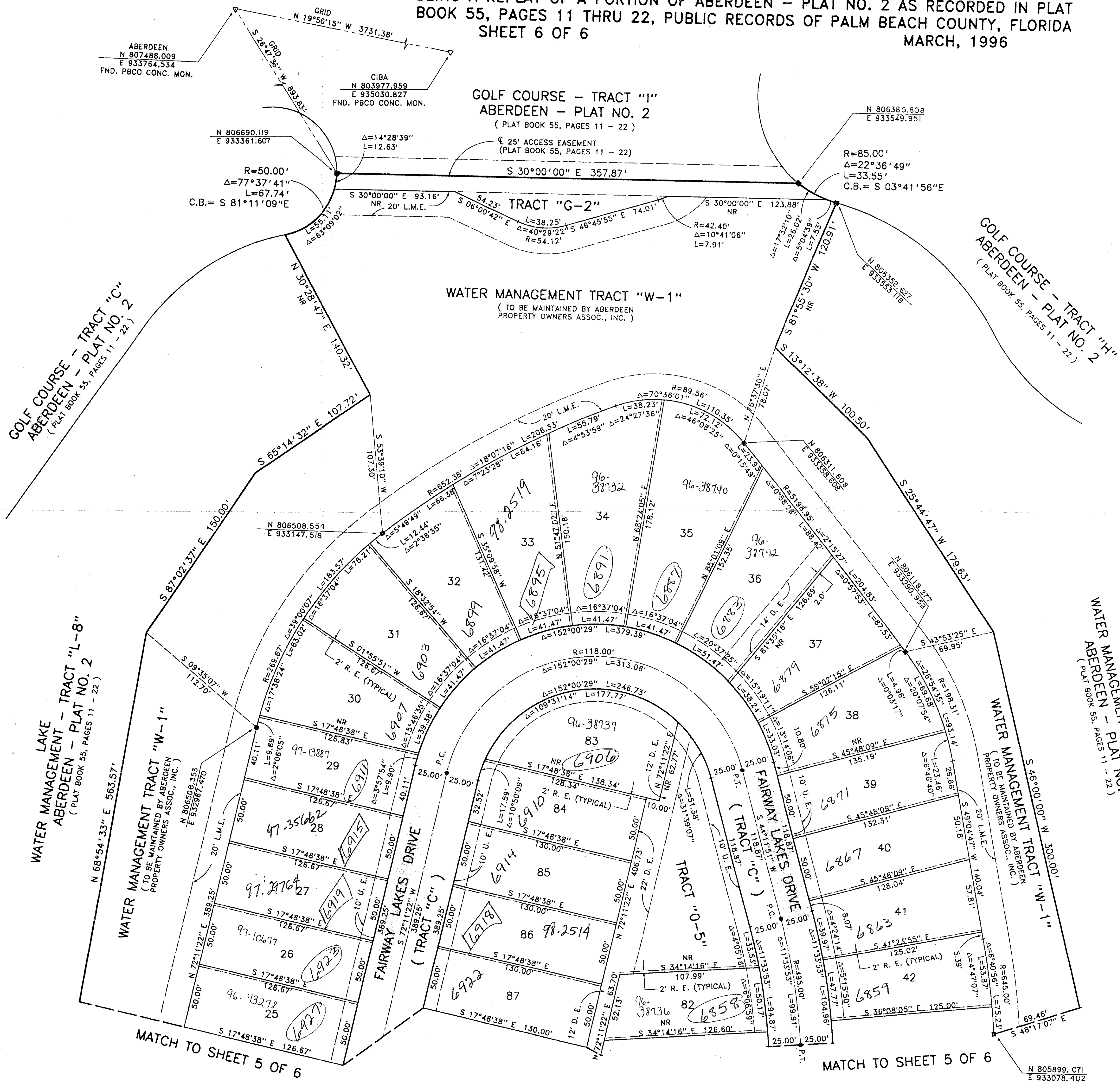
A PORTION OF A PLANNED UNIT DEVELOPMENT
 LYING IN SECTIONS 15 AND 16, TOWNSHIP 45 SOUTH, RANGE 42 EAST
 BEING A REPLAT OF A PORTION OF ABERDEEN - PLAT NO. 2 AS RECORDED IN PLAT
 BOOK 55, PAGES 11 THRU 22, PUBLIC RECORDS OF PALM BEACH COUNTY, FLORIDA
 SHEET 6 OF 6
 MARCH, 1996

0270-029

101



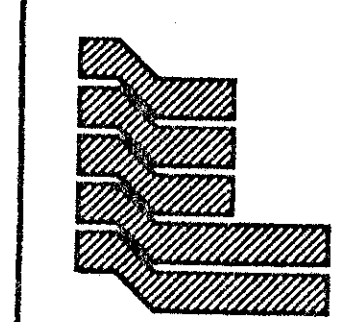
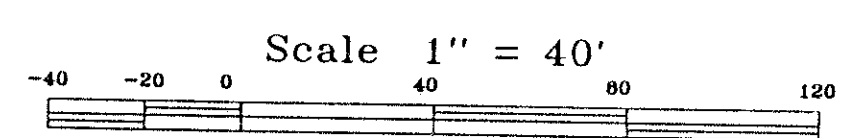
STATE OF FLORIDA
 COUNTY OF PALM BEACH
 This Plat was filed for record at _____
 M. This _____ day of _____, 19____
 and duly recorded in Plat Book No. _____
 on Page _____
 Dorothy H. Wilken, Clerk of the Circuit Court
 By _____ D.C.



COORDINATE NOTE:
 STATE PLANE COORDINATES SHOWN ARE GRID DATUM, NAD 83 1980
 ADJUSTMENT, FLORIDA EAST ZONE, COORDINATE SYSTEM 1983 STATE
 PLANE TRANSVERSE MERCATOR PROJECTION.
 LINEAR UNIT = US SURVEY FEET
 ALL DISTANCES ARE GROUND
 SCALE FACTOR = 1.0000288
 GROUND DISTANCE X SCALE FACTOR = GRID DISTANCE
 N 88°22'07" W (PLAT BEARING) -01°45'15" COUNTER CLOCKWISE
 S 88°52'38" W (GRID BEARING) BEARING ROTATION (PLAT TO GRID)
 THE SOUTH LINE OF SECTION 16, TOWNSHIP 45 SOUTH, RANGE 42 EAST
 ALSO THE SOUTH LINE OF ABERDEEN-PLAT NO. 2, AS RECORDED IN PLAT
 BOOK 55, PAGES 11-22, PUBLIC RECORDS OF PBCO, FLORIDA.

**Pet
 90-153**

**0270-029
 78/101**



Landmark Surveying & Mapping Inc.
 1850 FOREST HILL BOULEVARD
 PH. (407)433-5405 SUITE 100 W.P.B. FLORIDA

ABERDEEN - PLAT NO. 25

SUBDIVISION # ABERDEEN
 BOOK 78 PAGE 101 FLOOD MAP # 185A
 FLOOD ZONE B ZONING RT
 QUAD # 49 ZIP CODE 33437
 SE 80-153 ABERDEEN
 Recorded 1/97

TAZ-442

MATCH TO SHEET 5 OF 6

MATCH TO SHEET 5 OF 6