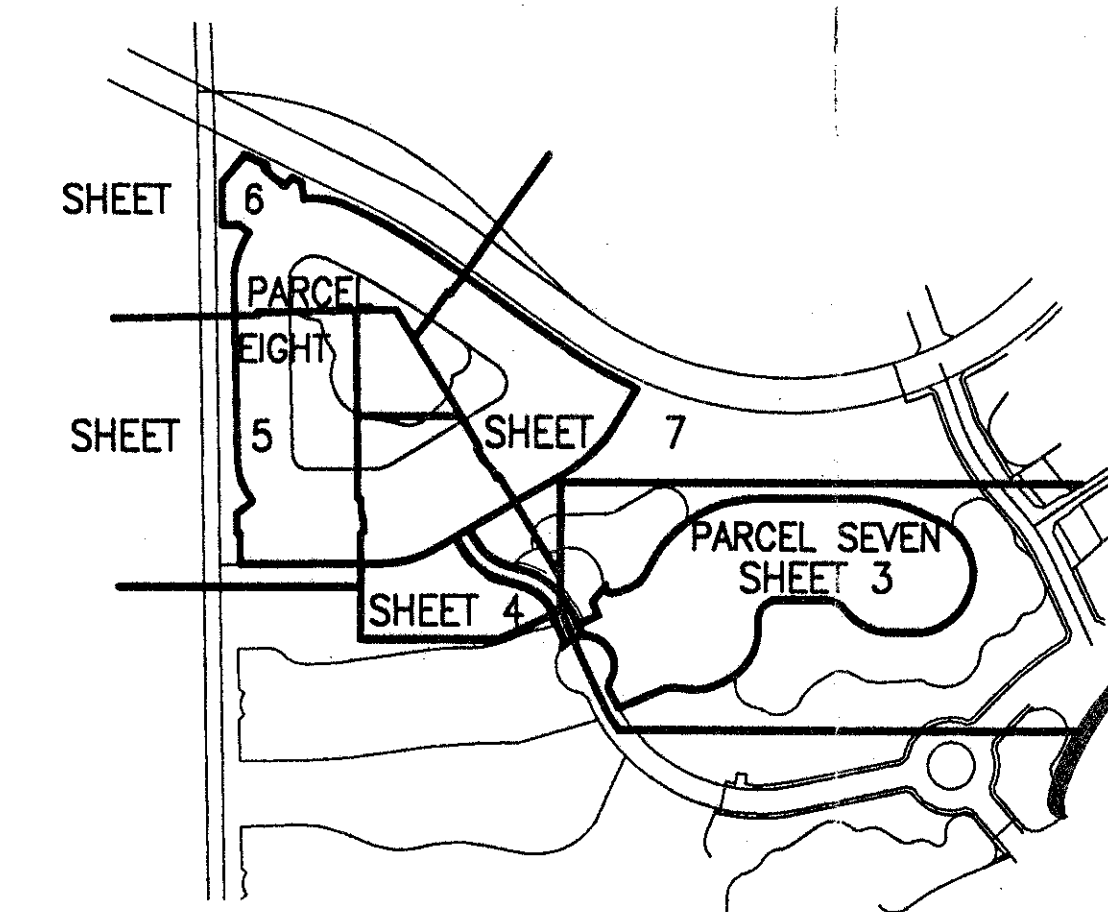


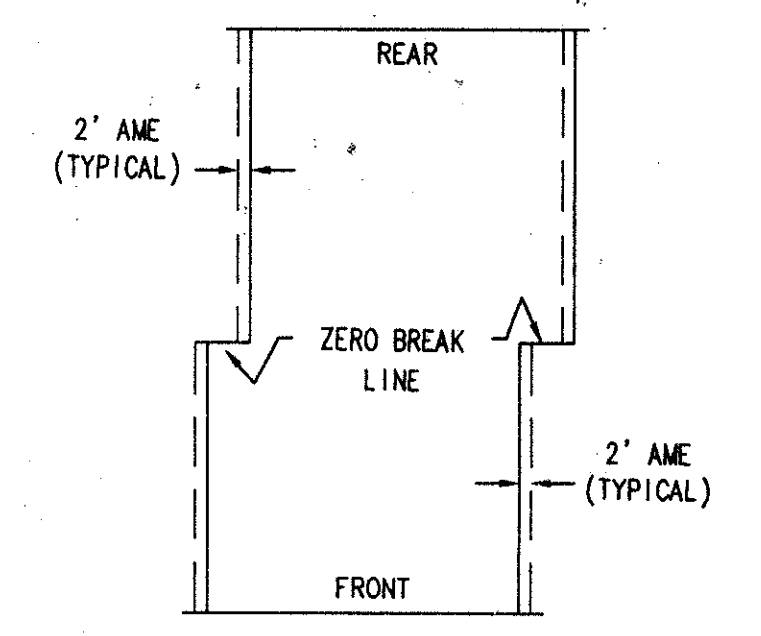
STATE OF FLORIDA
COUNTY OF PALM BEACH
THIS PLAT WAS FILED FOR
RECORD
THIS _____ DAY OF _____
AD, 1996 AND DULY RECORDED
IN PLAT BOOK _____ ON PAGES
_____ AND _____
DOROTHY H. WILKEN, CLERK
BY: _____, D.C.

CIRCUIT COURT SEAL



SHEET LOCATION MAP
NOT TO SCALE

*PET. 80-215 (A)
ALOC. #0002
5/3/3/K*



DETAIL FOR ACCESS AND MAINTENANCE EASEMENT
NOT TO SCALE

NOTE: AN ACCESS AND MAINTENANCE EASEMENT, 2 FEET IN WIDTH, EXISTS ON EACH LOT FROM THE ZERO BREAK LINE TO THE FRONT, AND FROM THE ZERO BREAK LINE TO THE REAR, ADJACENT TO AND CONTIGUOUS WITH THE ZERO LOT LINE OF THE ADJOINING LOT. THIS EASEMENT IS FOR ACCESS AND MAINTENANCE AND IS IN FAVOR OF THE ADJOINING LOT, ITS SUCCESSORS AND ASSIGNS, WITHOUT RECOURSE TO PALM BEACH COUNTY.

*POLO CLUB WEST/
GLENAGLES PUD*

- LEGEND
- AME ACCESS AND MAINTENANCE EASEMENT
 - BE BUFFER EASEMENT
 - Δ CENTRAL (DELTA) ANGLE
 - DE DRAINAGE EASEMENT
 - FPL FLORIDA POWER & LIGHT
 - L ARC LENGTH
 - LAE LIMITED ACCESS EASEMENT
 - LE LANDSCAPE EASEMENT
 - LME LAKE MAINTENANCE EASEMENT
 - LMAE LAKE MAINTENANCE ACCESS EASEMENT
 - LWDD LAKE WORTH DRAINAGE DISTRICT
 - (NR) NON-RADIAL
 - ORB OFFICIAL RECORD BOOK
 - PB PLAT BOOK
 - PG(S) PAGE(S)
 - R RADIUS
 - UE UTILITY EASEMENT
 - PERMANENT REFERENCE MONUMENT FOUND PLS# 4763
 - PERMANENT REFERENCE MONUMENT SET PLS# 4763
 - PERMANENT CONTROL POINT SET PLS# 4763
 - ⊙ CENTERLINE

78/129

THIS INSTRUMENT WAS PREPARED BY MARY HANNA CLODFELTER, P.L.S. IN THE OFFICES OF MOCK, ROOS & ASSOCIATES, INC., 5720 CORPORATE WAY, WEST PALM BEACH, FLORIDA 33407.

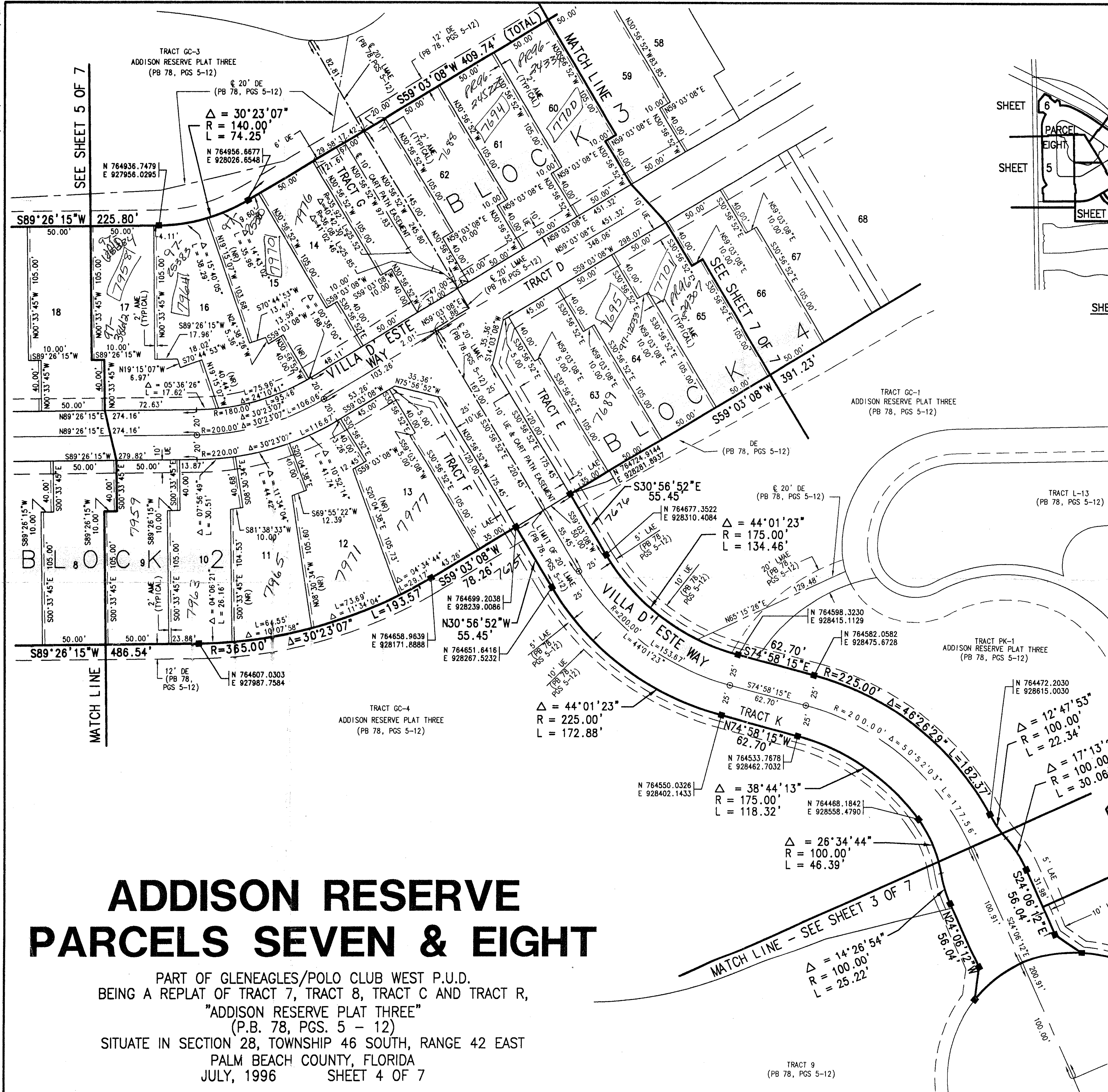
SCALE:
1" = 40'
P.A. NO.:
94182.07
DATE:
JULY 1996
DRAWING NO.:
46-42-28-98

MOCK ROOS
ENGINEERS SURVEYORS PLANNERS
5720 Corporate Way, West Palm Beach, Florida 33407
(407) 683-3113, fax 478-7248

**ADDISON RESERVE
PARCELS SEVEN & EIGHT**
PART OF GLENAGLES/POLO CLUB WEST P.U.D.
BEING A REPLAT OF TRACT 7, TRACT 8, TRACT C AND TRACT R,
"ADDISON RESERVE PLAT THREE"
(P.B. 78, PGS. 5 - 12)
SITUATE IN SECTION 28, TOWNSHIP 46 SOUTH, RANGE 42 EAST
PALM BEACH COUNTY, FLORIDA

0230-021

K:\WORK\ADDISON 10-21-96 ADDRES.pwg EST



ADDISON RESERVE PARCELS SEVEN & EIGHT

PART OF GLENAGLES/POLO CLUB WEST P.U.D.
BEING A REPLAT OF TRACT 7, TRACT 8, TRACT C AND TRACT R,
"ADDISON RESERVE PLAT THREE"
(P.B. 78, PGS. 5 - 12)
SITUATE IN SECTION 28, TOWNSHIP 46 SOUTH, RANGE 42 EAST
PALM BEACH COUNTY, FLORIDA
JULY, 1996 SHEET 4 OF 7

ADDISON RESERVE
SUBDIVISION * ADDISON RESERVE
BOOK 78 PAGE 129
PLAT NO. 94182.07
DATE JULY 1996
DRAWING NO. 46-42-28-98