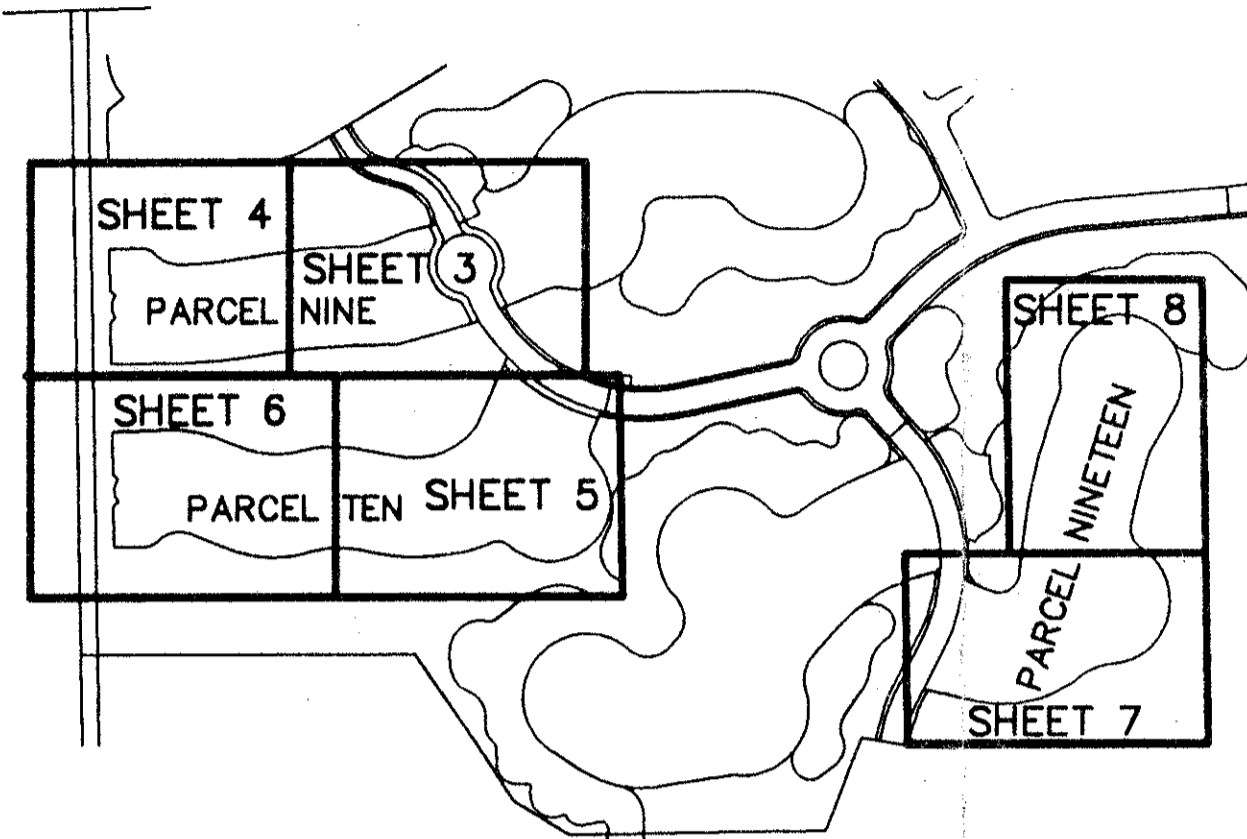
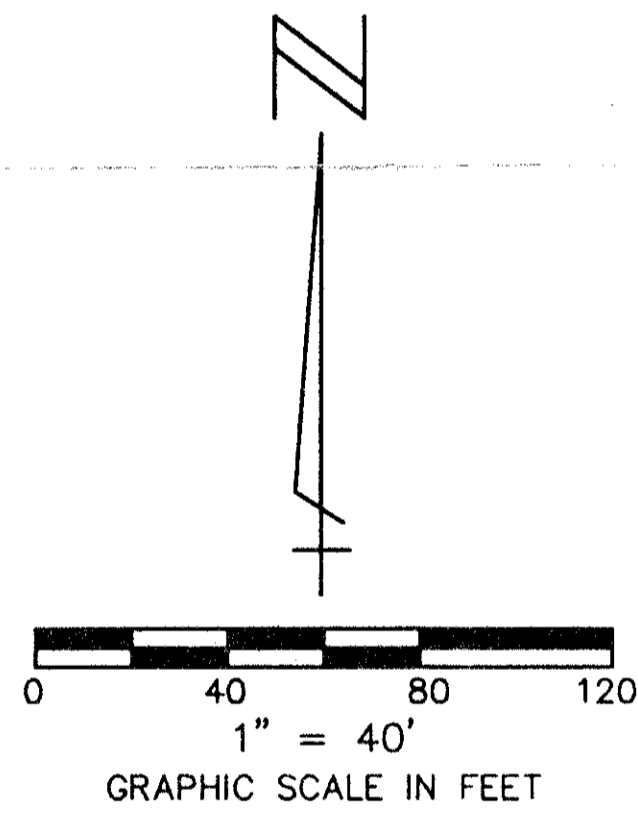


# ADDISON RESERVE PARCELS NINE, TEN & NINETEEN

PART OF GLENEAGLES/POLO CLUB WEST P.U.D. BEING A REPLAT OF TRACT 9, TRACT 10 AND TRACT 19,  
"ADDISON RESERVE PLAT THREE" (P.B. 78, PGS. 5 - 12)  
SITUATE IN SECTION 28, TOWNSHIP 46 SOUTH, RANGE 42 EAST PALM BEACH COUNTY, FLORIDA  
AUGUST, 1996 SHEET 5 OF 8



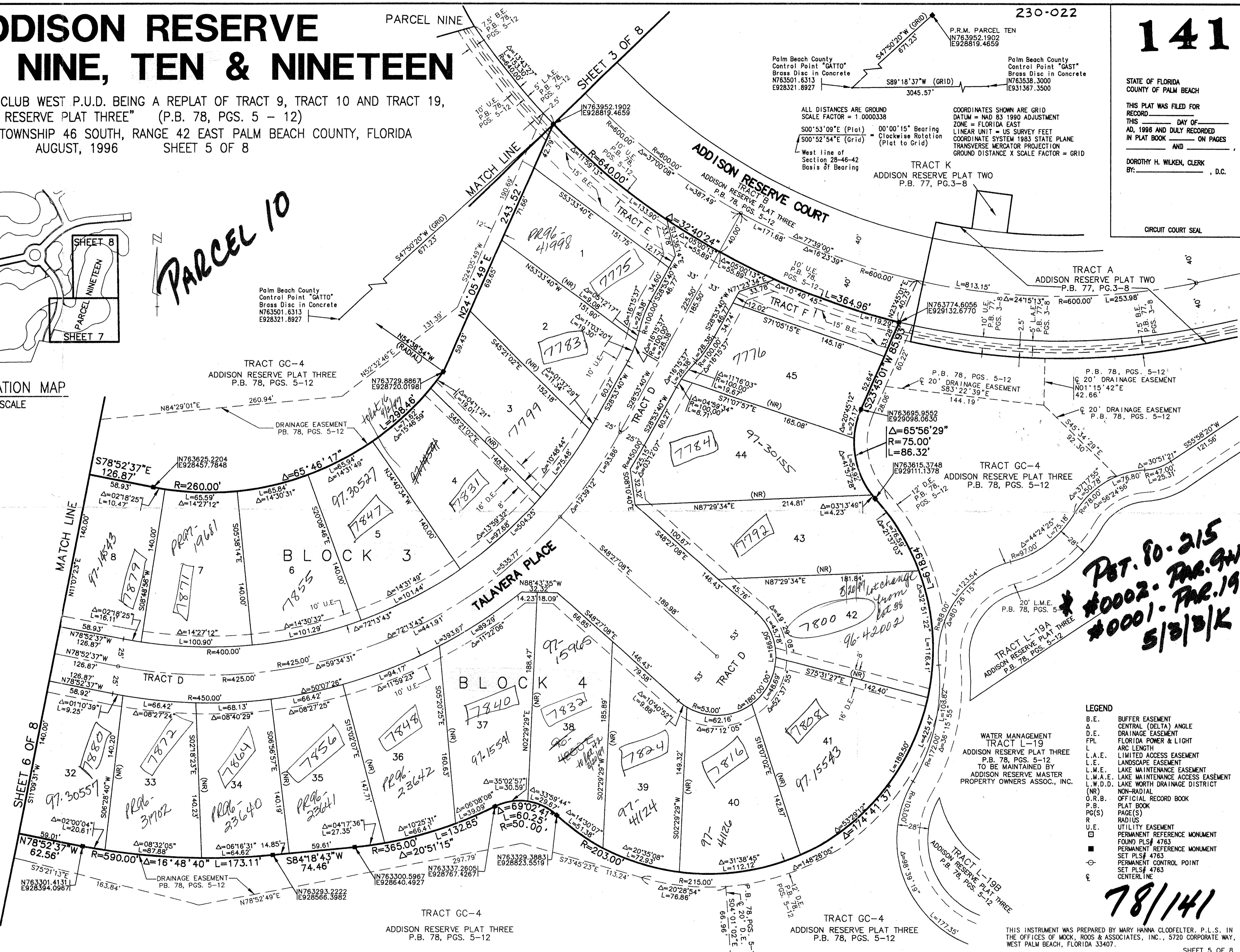
SHEET LOCATION MAP  
NOT TO SCALE



SUBDIVISION: Addison Reserve  
BOOK: 78 PAGE: 14  
FLOOD MAP # 215A  
ZONING: RTS  
QUAD # 52  
SE 80-215  
ZIP CODE: 33446  
PUD NAME: Addison Reserve

REV. 9-25-96  
CAD FILE: T:\CAD\ADDIRP17

*PARCEL 10*



141  
STATE OF FLORIDA  
COUNTY OF PALM BEACH  
THIS PLAT WAS FILED FOR RECORD \_\_\_\_\_ DAY OF \_\_\_\_\_ AD, 1996 AND DULY RECORDED IN PLAT BOOK \_\_\_\_\_ AND \_\_\_\_\_  
DOROTHY H. WILKEN, CLERK  
BY: \_\_\_\_\_, D.C.  
CIRCUIT COURT SEAL

- LEGEND
- B.E. BUFFER EASEMENT
  - Δ CENTRAL (DELTA) ANGLE
  - D.E. DRAINAGE EASEMENT
  - FPL FLORIDA POWER & LIGHT
  - L ARC LENGTH
  - L.A.E. LIMITED ACCESS EASEMENT
  - L.E. LANDSCAPE EASEMENT
  - L.M.E. LAKE MAINTENANCE EASEMENT
  - L.M.A.E. LAKE MAINTENANCE ACCESS EASEMENT
  - L.W.D.D. LAKE WORTH DRAINAGE DISTRICT
  - (NR) NON-RADIAL
  - O.R.B. OFFICIAL RECORD BOOK
  - P.B. PLAT BOOK
  - PG(S) PAGE(S)
  - R. RADIUS
  - U.E. UTILITY EASEMENT
  - PERMANENT REFERENCE MONUMENT FOUND PLS# 4763
  - PERMANENT REFERENCE MONUMENT SET PLS# 4763
  - PERMANENT CONTROL POINT SET PLS# 4763
  - ⊙ CENTERLINE

THIS INSTRUMENT WAS PREPARED BY MARY HANNA CLODFELTER, P.L.S. IN THE OFFICES OF MCKEY, ROOS & ASSOCIATES, INC., 5720 CORPORATE WAY, WEST PALM BEACH, FLORIDA 33407.  
SHEET 5 OF 8

SCALE: 1" = 40'  
P.A. NO.: 94182.09  
DATE: AUGUST 1996  
DRAWING NO. 46-42-28-105

**MCKEY ROOS**  
ENGINEERS SURVEYORS PLANNERS  
5720 Corporate Way, West Palm Beach, Florida 33407  
(407) 683-3113, fax 478-7248

ADDISON RESERVE  
PARCELS NINE, TEN & NINETEEN  
PART OF GLENEAGLES/POLO CLUB WEST P.U.D.  
BEING A REPLAT OF TRACT 9, TRACT 10 AND TRACT 19,  
"ADDISON RESERVE PLAT THREE"  
(P.B. 78, PGS. 5 - 12)  
SITUATE IN SECTION 28, TOWNSHIP 46 SOUTH, RANGE 42 EAST  
PALM BEACH COUNTY, FLORIDA

*0230-022*