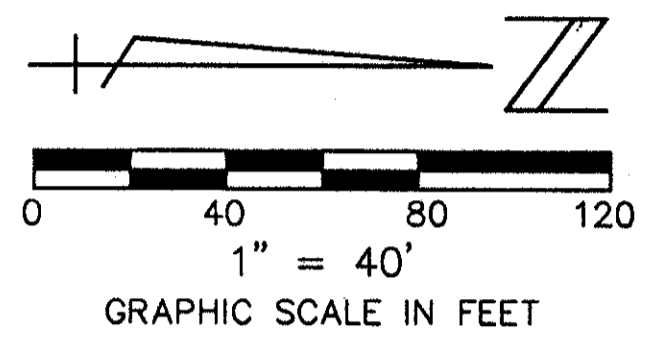


ADDISON RESERVE PARCELS NINE, TEN & NINETEEN

PART OF GLENEAGLES/POLO CLUB WEST P.U.D. BEING A REPLAT OF TRACT 9, TRACT 10 AND TRACT 19, "ADDISON RESERVE PLAT THREE" (P.B. 78, PGS. 5 - 12) SITUATE IN SECTION 28, TOWNSHIP 46 SOUTH, RANGE 42 EAST PALM BEACH COUNTY, FLORIDA AUGUST, 1996 SHEET 8 OF 8

STATE OF FLORIDA
COUNTY OF PALM BEACH
THIS PLAT WAS FILED FOR RECORD _____ DAY OF _____ AD, 1996 AND DULY RECORDED IN PLAT BOOK _____ ON PAGES _____ AND _____
DOROTHY H. WILKEN, CLERK
BY: _____, D.C.

CIRCUIT COURT SEAL



- LEGEND**
- A.M.E. ACCESS AND MAINTENANCE EASEMENT
 - B.E. BUFFER EASEMENT
 - Δ CENTRAL (DELTA) ANGLE
 - D.E. DRAINAGE EASEMENT
 - FPL FLORIDA POWER & LIGHT
 - L ARC LENGTH
 - L.A.E. LIMITED ACCESS EASEMENT
 - L.E. LANDSCAPE EASEMENT
 - L.M.A.E. LAKE MAINTENANCE EASEMENT
 - L.W.A.E. LAKE MAINTENANCE ACCESS EASEMENT
 - L.W.D. LAKE WORTH DRAINAGE DISTRICT
 - (NR) NON-RADIAL
 - O.R.B. OFFICIAL RECORD BOOK
 - P.B. PLAT BOOK
 - PG(S) PAGE(S)
 - R RADIUS
 - U.E. UTILITY EASEMENT
 - PM PERMANENT REFERENCE MONUMENT FOUND PLS# 4763
 - PERMANENT REFERENCE MONUMENT SET PLS# 4763
 - PERMANENT CONTROL POINT SET PLS# 4763
 - ⊙ CENTERLINE

PARCEL 19

*PET. 80-215
ALUC. #0002. PAR. 9+10
*ALUC. #0001. PAR. 19
5/9/96*

0230-022

78/144

WATER MANAGEMENT TRACT LK-18 ADDISON RESERVE PLAT THREE P.B. 78, PGS. 5-12 TO BE MAINTAINED BY ADDISON RESERVE MASTER PROPERTY OWNERS ASSOC., INC.

WATER MANAGEMENT TRACT LK-18 ADDISON RESERVE PLAT THREE P.B. 78, PGS. 5-12 TO BE MAINTAINED BY ADDISON RESERVE MASTER PROPERTY OWNERS ASSOC., INC.

Palm Beach County Control Point "GASTO" Brass Disc in Concrete N 763501.6313 E 928221.8927
Palm Beach County Control Point "GAST" Brass Disc in Concrete N 763538.3000 E 931367.3500

ALL DISTANCES ARE GROUND SCALE FACTOR = 1.0000338
COORDINATES SHOWN ARE GRID DATUM = NAD 83 1980 ADJUSTMENT ZONE = FLORIDA EAST LINEAR UNIT = US SURVEY FEET COORDINATE SYSTEM 1983 STATE PLANE TRANSVERSE MERCATOR PROJECTION GROUND DISTANCE X SCALE FACTOR = GRID
S00°53'09"E (Plot) = 00°00'15" Bearing
S00°52'54"E (Grid) = Clockwise Rotation (Plot to Grid)
West line of Section 28-48-42 Basis of Bearing

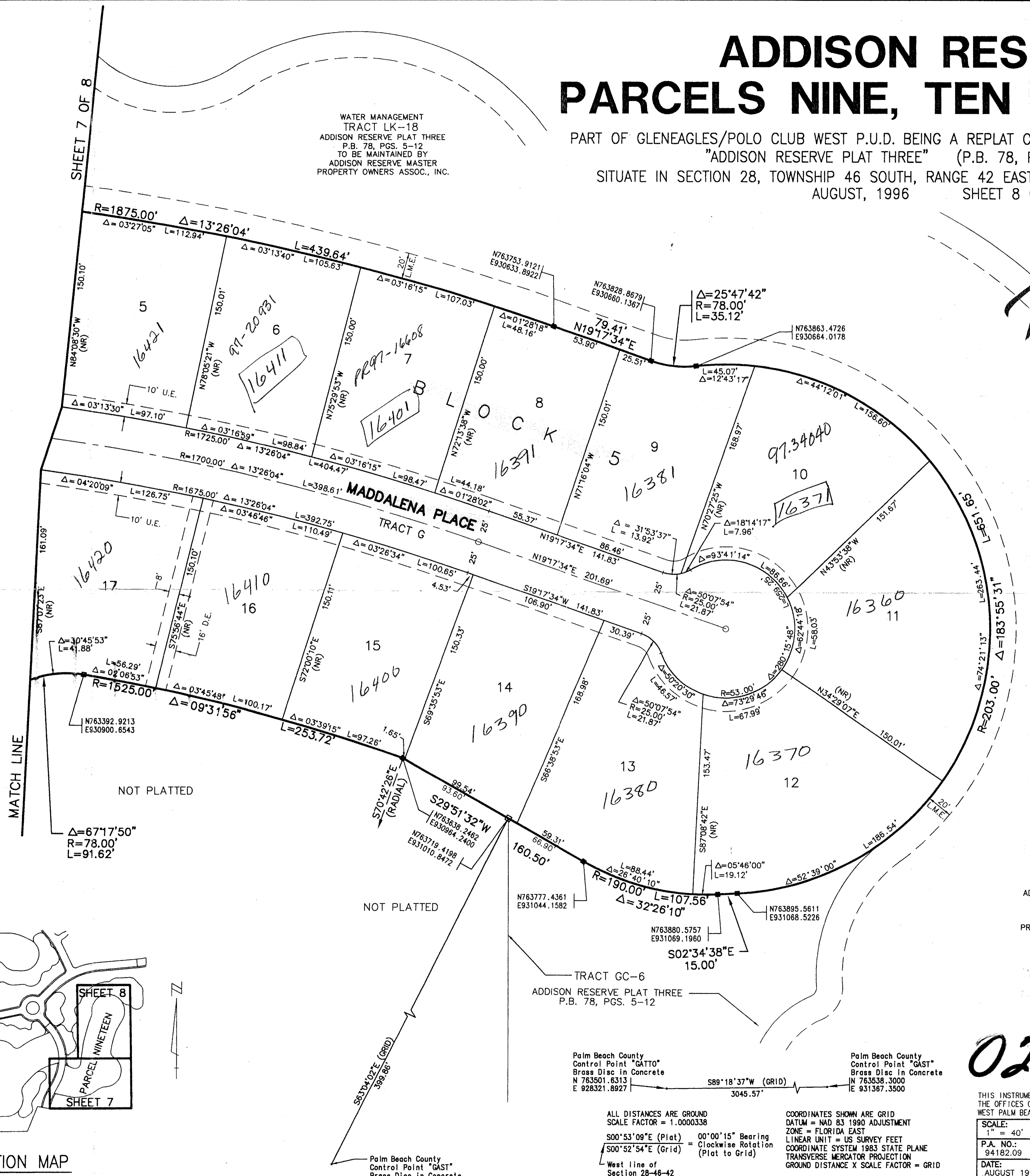
THIS INSTRUMENT WAS PREPARED BY MARY HANNA CLODFELTER, P.L.S., IN THE OFFICES OF MOCK, ROOS & ASSOCIATES, INC., 5720 CORPORATE WAY, WEST PALM BEACH, FLORIDA 33407.

MOCK ROOS
ENGINEERS SURVEYORS PLANNERS

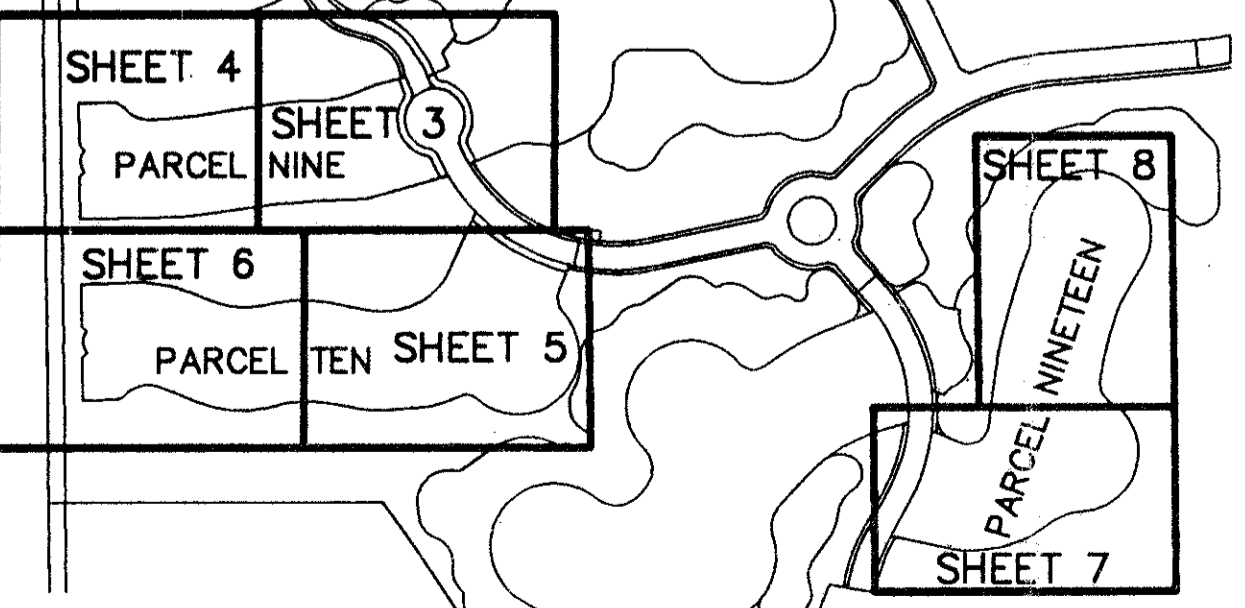
5720 Corporate Way, West Palm Beach, Florida 33407
(561) 883-3113, fax 478-7248

SCALE: 1" = 40'
P.A. NO.: 94182.09
DATE: AUGUST 1996
DRAWING NO. 46-42-28-105

ADDISON RESERVE PARCELS NINE, TEN & NINETEEN PART OF GLENEAGLES/POLO CLUB WEST P.U.D. BEING A REPLAT OF TRACT 9, TRACT 10 AND TRACT 19, "ADDISON RESERVE PLAT THREE" (P.B. 78, PGS. 5 - 12) SITUATE IN SECTION 28, TOWNSHIP 46 SOUTH, RANGE 42 EAST PALM BEACH COUNTY, FLORIDA



SUBDIVISION * ADDISON RESERVE
BOOK 78 PAGE 144
FLOOD ZONE B FLOOD MAP # 215A
GRID # 52 ZONING RTS
SE 80-215 ZIP CODE 33446
PUD NAME ADDISON RESERVE



SHEET LOCATION MAP NOT TO SCALE