

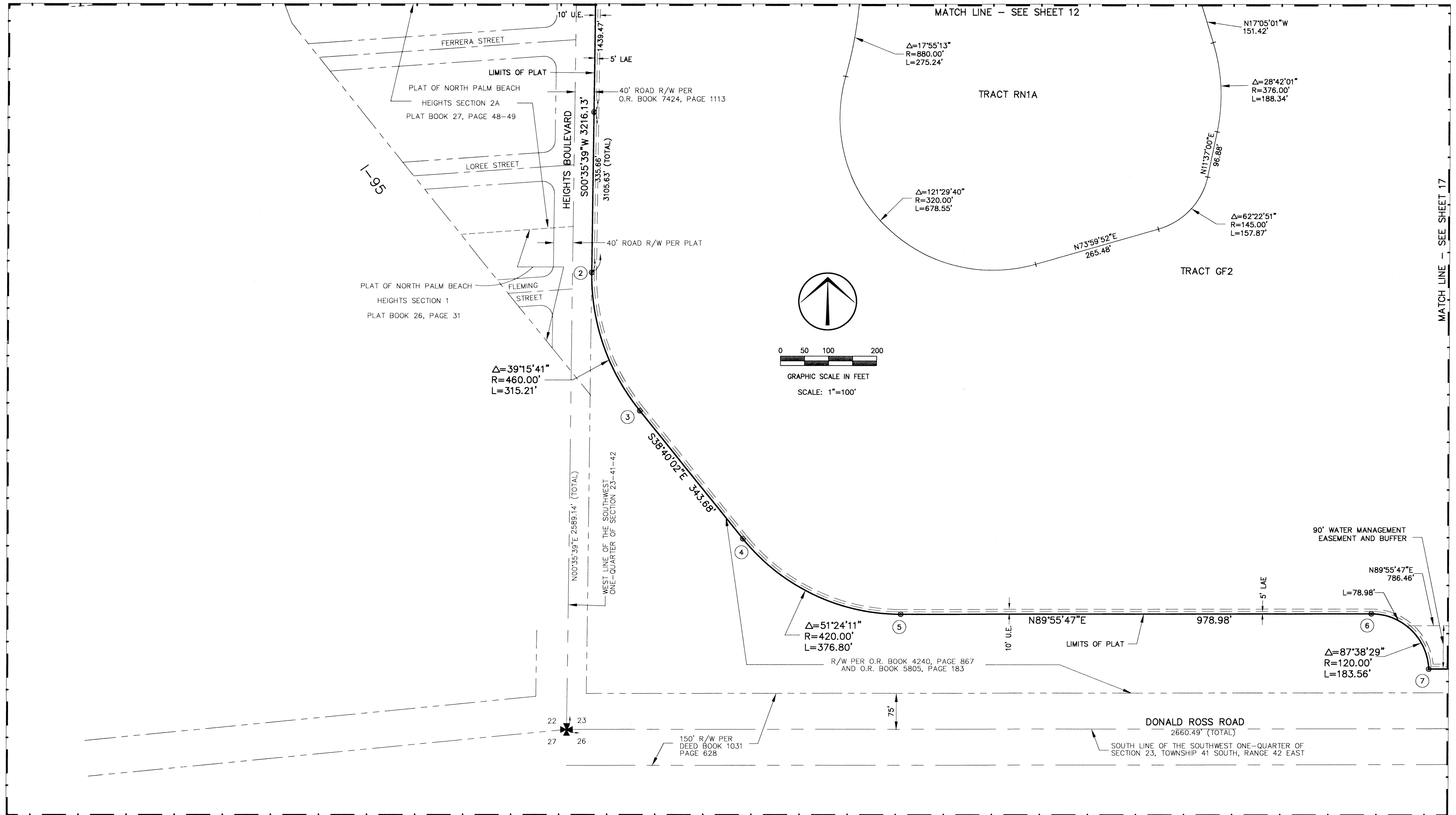
# ABACOA PLAT NO. 1

A PORTION OF SECTIONS 13, 14, 23 AND 24, TOWNSHIP 41 SOUTH, RANGE 42 EAST  
TOWN OF JUPITER, PALM BEACH COUNTY, FLORIDA

THIS INSTRUMENT PREPARED BY JAMES E. PARK, P.L.S.  
WILLIAMS, HATFIELD & STONER, INC. - ENGINEERS PLANNERS SURVEYORS  
1901 SOUTH CONGRESS AVENUE, SUITE 150, BOYNTON BEACH, FLORIDA 33426

# 160

SHEET 16 OF 19



SUBDIVISION # ABACOA  
 BOOK 78  
 PAGE 160  
 FLOOD MAP #  
 ZONING  
 QUAD #  
 SE  
 PUD NAME TOWN OF JUPITER  
 TAZ-31