

DELRAY LAKES

A PLAT OF A PORTION OF SECTION 8, TOWNSHIP 46 SOUTH, RANGE 43 EAST
 AND ALSO A REPLAT OF A PORTION OF THE AMENDED PLAT OF ISLES OF DELRAY
 SECTION 2 AS RECORDED IN PLAT BOOK 71, PAGES 58 THRU 62 OF THE PUBLIC
 RECORDS OF PALM BEACH COUNTY, FLORIDA
 CITY OF DELRAY BEACH PALM BEACH COUNTY, FLORIDA

JANUARY 3RD, 1996
 SHEET 4 OF 5

GENERAL NOTES:

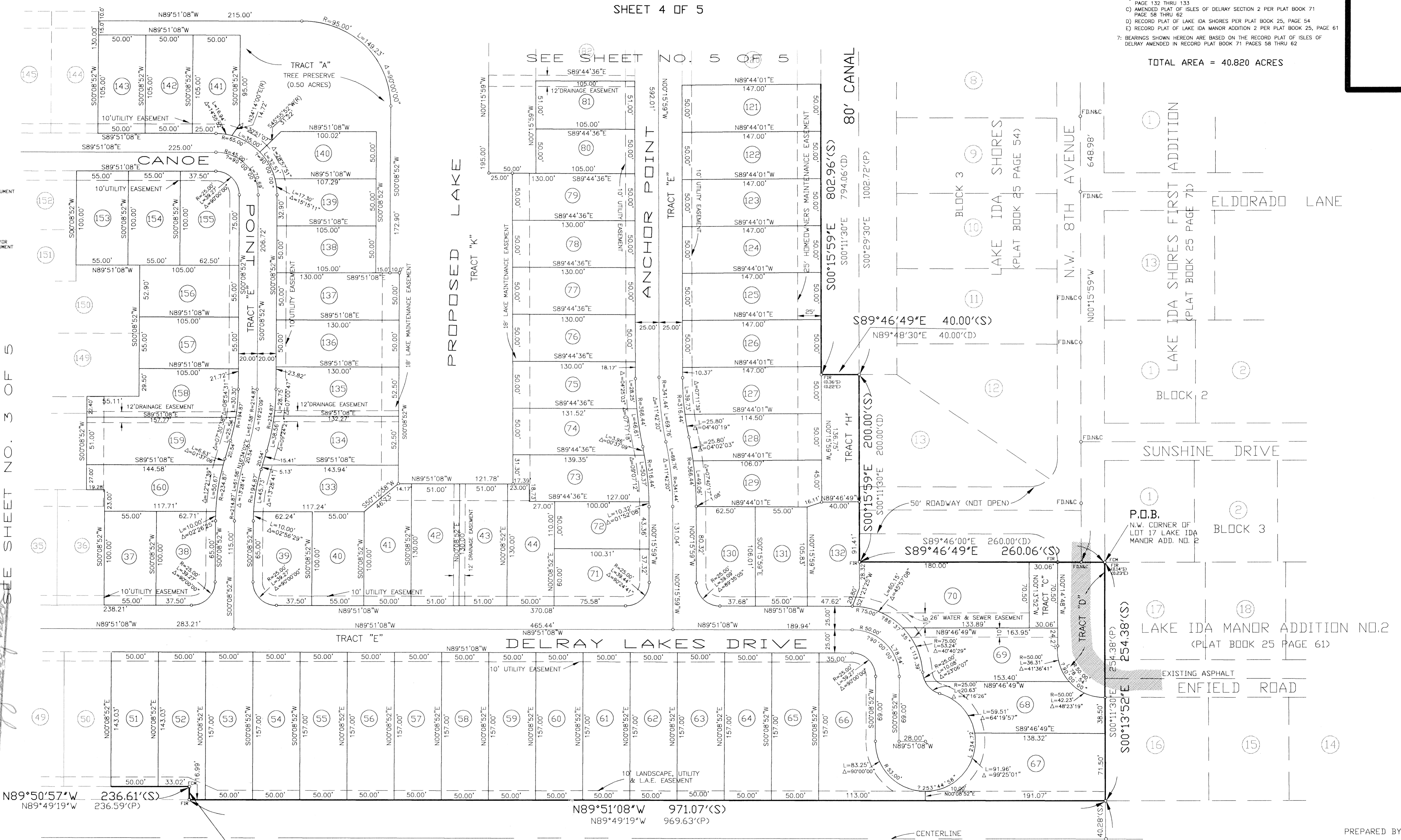
- SEE BOUNDARY SURVEY FOR LOCATION OF EXISTING UTILITIES AND TOPOGRAPHIC INFORMATION
- MEASUREMENTS SHOWN HEREON ARE EXPRESSED IN FEET AND DECIMAL PARTS THEREOF
- ELEVATIONS SHOWN HEREON ARE BASED ON NGVD DATUM AND ARE RELATIVE TO THE FOLLOWING BENCHMARK: PALM BEACH COUNTY BM DEPT. ELEVATION = 13.51'
- MINIMUM FINISH FLOOR ELEVATION = 16.40
- SEE BOUNDARY SURVEY FOR LOCATION OF EXISTING EASEMENTS
- SOURCES OF INFORMATION USED IN THE PREPARATION OF THIS SURVEY AND PRELIMINARY PLAT ARE AS FOLLOWS:
 - TITLE COMMITMENT NO. FA-CC-198178, DATED 6/21/95
 - RECORD PLAT OF ISLES OF DELRAY SECTION 2 PER PLAT BOOK 40 PAGE 132 THRU 133
 - AMENDED PLAT OF ISLES OF DELRAY SECTION 2 PER PLAT BOOK 71 PAGE 58 THRU 62
 - RECORD PLAT OF LAKE IDA SHORES PER PLAT BOOK 25, PAGE 54
 - RECORD PLAT OF LAKE IDA MANOR ADDITION 2 PER PLAT BOOK 25, PAGE 61
- BEARINGS SHOWN HEREON ARE BASED ON THE RECORD PLAT OF ISLES OF DELRAY AMENDED IN RECORD PLAT BOOK 71 PAGES 58 THRU 62

TOTAL AREA = 40.820 ACRES

BEARING BASE, CENTERLINE OF ENFIELD COURT
 PER RECORD PLAT OF ISLES OF DELRAY SECTION 2
 (PLAT BOOK 71 PAGE 62)

SCALE 1" = 50'

- LEGEND**
- R = RADIUS
 - A = CENTRAL ANGLE
 - L = ARC LENGTH
 - RD = RIGHT OF WAY
 - CM = SET CONCRETE MONUMENT
 - PRM = PERMANENT REFERENCE MONUMENT
 - FCM = FOUND CONCRETE MONUMENT
 - PIB = POINT OF BEGINNING
 - PC = POINT OF COMMENCEMENT
 - PT = POINT
 - SV = SURVEY
 - BE = BEARINGS
 - CL = CALCULATED
 - PLS = PROFESSIONAL LAND SURVEYOR
 - PRM = PERMANENT REFERENCE MONUMENT
 - PG = PAGE
 - OR = OFFICIAL RECORDS
 - SCM = SET CONCRETE MONUMENT
 - CL = CENTERLINE
 - EDP = EDGE OF PAVEMENT
 - SRM = SET IRON ROD #3444
 - LAE = LIMITED ACCESS EASEMENT



Subdivision *Delray Lakes*
 Book 78 PAGE 187
 FLOOD ZONE - FLOOD MAP
 QVAD # ZONING
 SE ZIP CODE
 PUD NAME *City of Delray Beach*

PREPARED BY
Ralph B. Demaggio & Associates, Inc.
 Consulting Engineers, Planners, Surveyors
 6100 Boulevard of Champions
 North Lauderdale, Florida 33068
 (305) 969-5100
 FAX (305) 969-9680