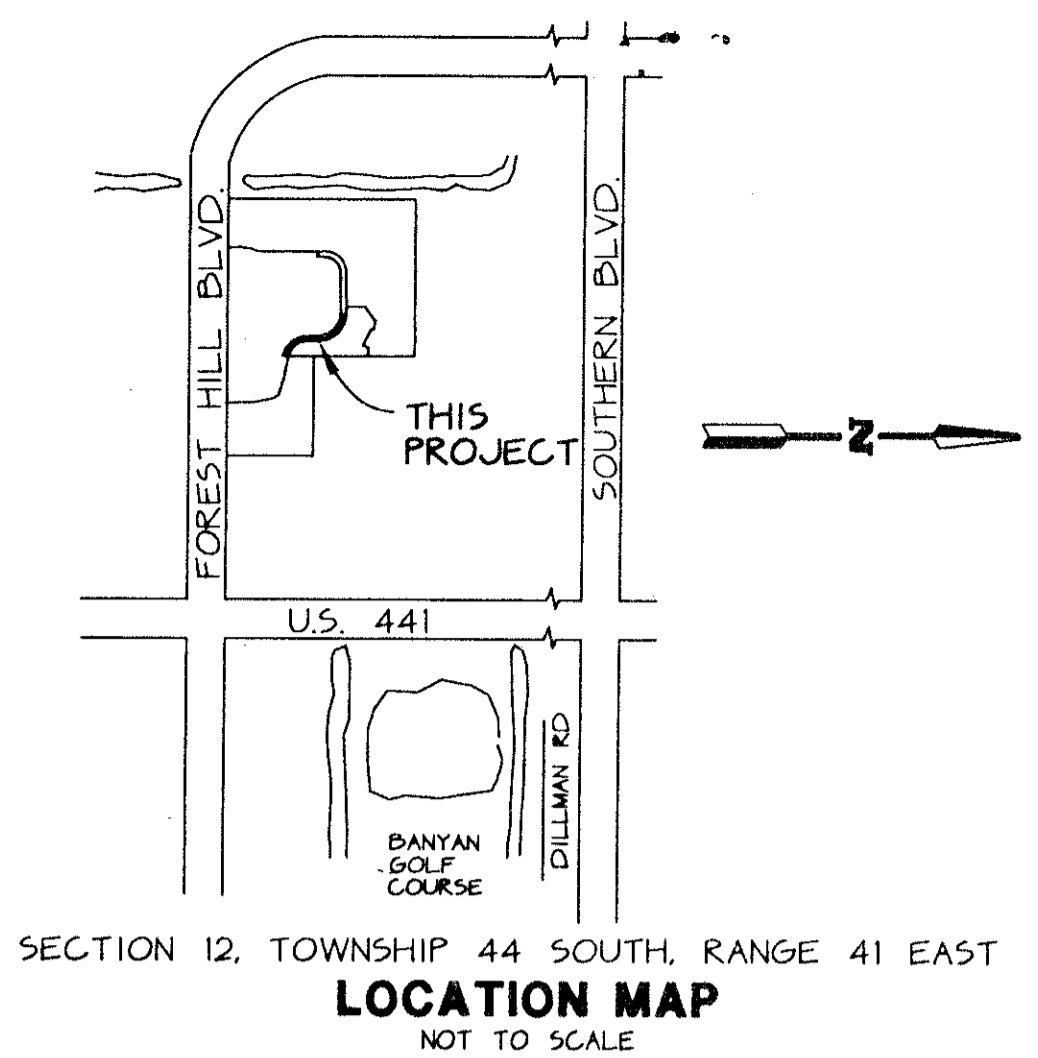


WELLINGTON'S EDGE, PARCEL 77 - PHASE 3, A P.U.D.

A PORTION OF THE SOUTHWEST ONE-QUARTER (SW 1/4) OF SECTION 12, TOWNSHIP 44 SOUTH, RANGE 41 EAST, VILLAGE OF WELLINGTON, PALM BEACH COUNTY, FLORIDA.

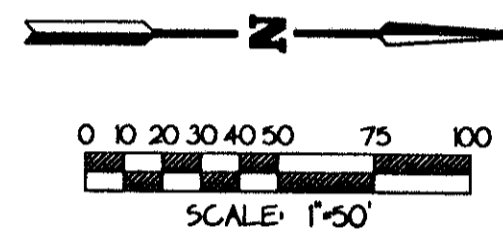
THIS INSTRUMENT PREPARED BY JAMES E. PARK, P.L.S.
WILLIAMS, HATFIELD & STONER, INC. - ENGINEERS PLANNERS SURVEYORS
1901 SOUTH CONGRESS AVENUE, SUITE 150, BOYNTON BEACH, FLORIDA 33426

SHEET 3 OF 3

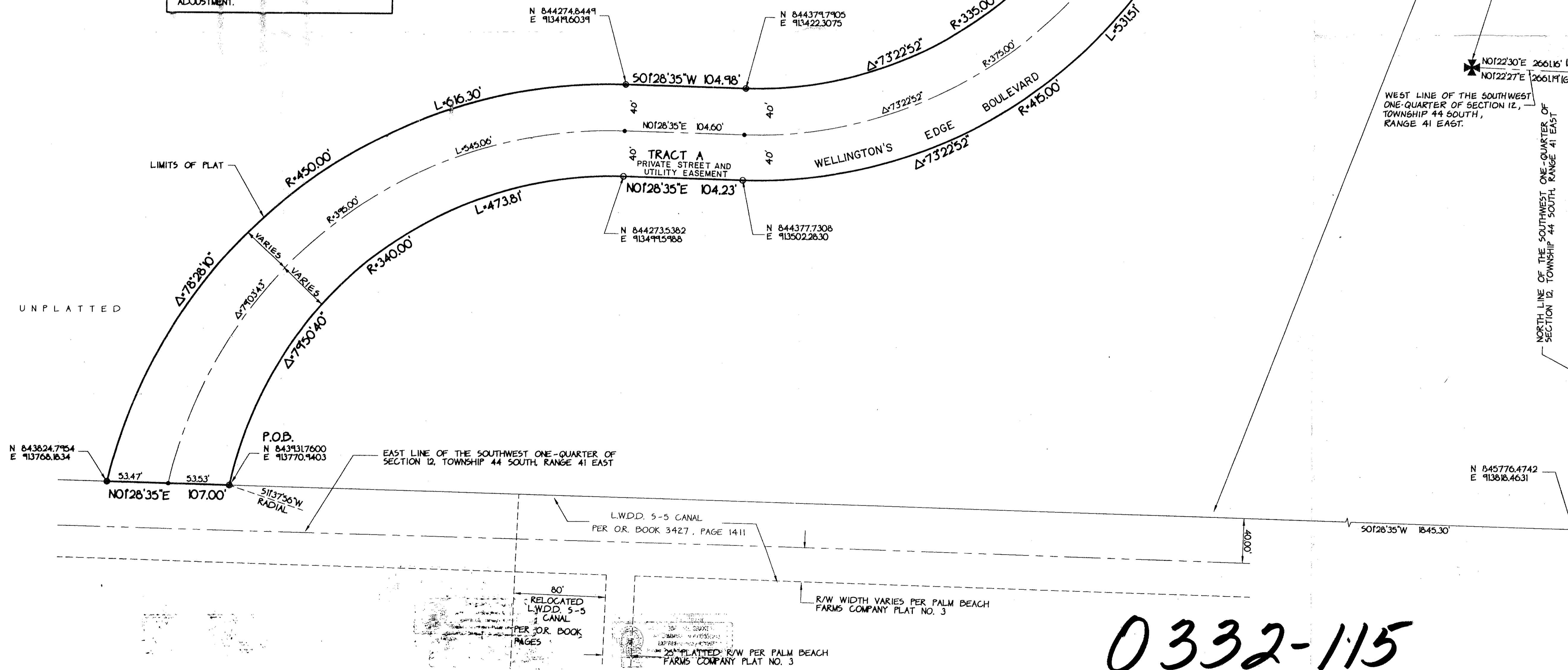


WELLINGTON'S EDGE PLAT NO. 1
PLAT BOOK 63, PAGES 49 - 51

UNPLATTED



NOTE: BEARINGS SHOWN HEREON ARE ON A GRID AZIMUTH (NAD 27, 1972 ADJUSTMENT) AND ARE NOT INTENDED TO BE ON THE SAME GRID BEARING OF THE STATE PLANE. COORDINATE VALUES SHOWN HEREON, WHICH ARE BASED UPON THE NAD 83, 1990 ADJUSTMENT.



SOUTHWEST CORNER OF THE SOUTHWEST ONE-QUARTER OF SECTION 12, TOWNSHIP 44 SOUTH, RANGE 41 EAST
N 84325.6510
E 91183.6600
(1990 ADJUSTMENT)

P.O.C.
NORTHWEST CORNER OF THE SOUTHWEST ONE-QUARTER OF SECTION 12, TOWNSHIP 44 SOUTH, RANGE 41 EAST, AS MONUMENTED AND PUBLISHED BY PALM BEACH COUNTY, DATED 5-28-87
N 845876.0770
E 91217.4750
(1990 ADJUSTMENT)

WELLINGTON'S EDGE - PARCEL 77 - PHASE 3 - A
 SUBDIVISION OF PARCEL 77 - PHASE 3 - A
 BOOK 78 PAGE 201
 FLOOD ZONE B
 FLOOD MAP # 100B
 ZONING RTS
 MAP # 62
 AIR JOBE 88414
 MAP 86-141
 P.D. RANGE
 WELLINGTON'S EDGE - PARCEL 77 - PHASE 3 - A

0332-115