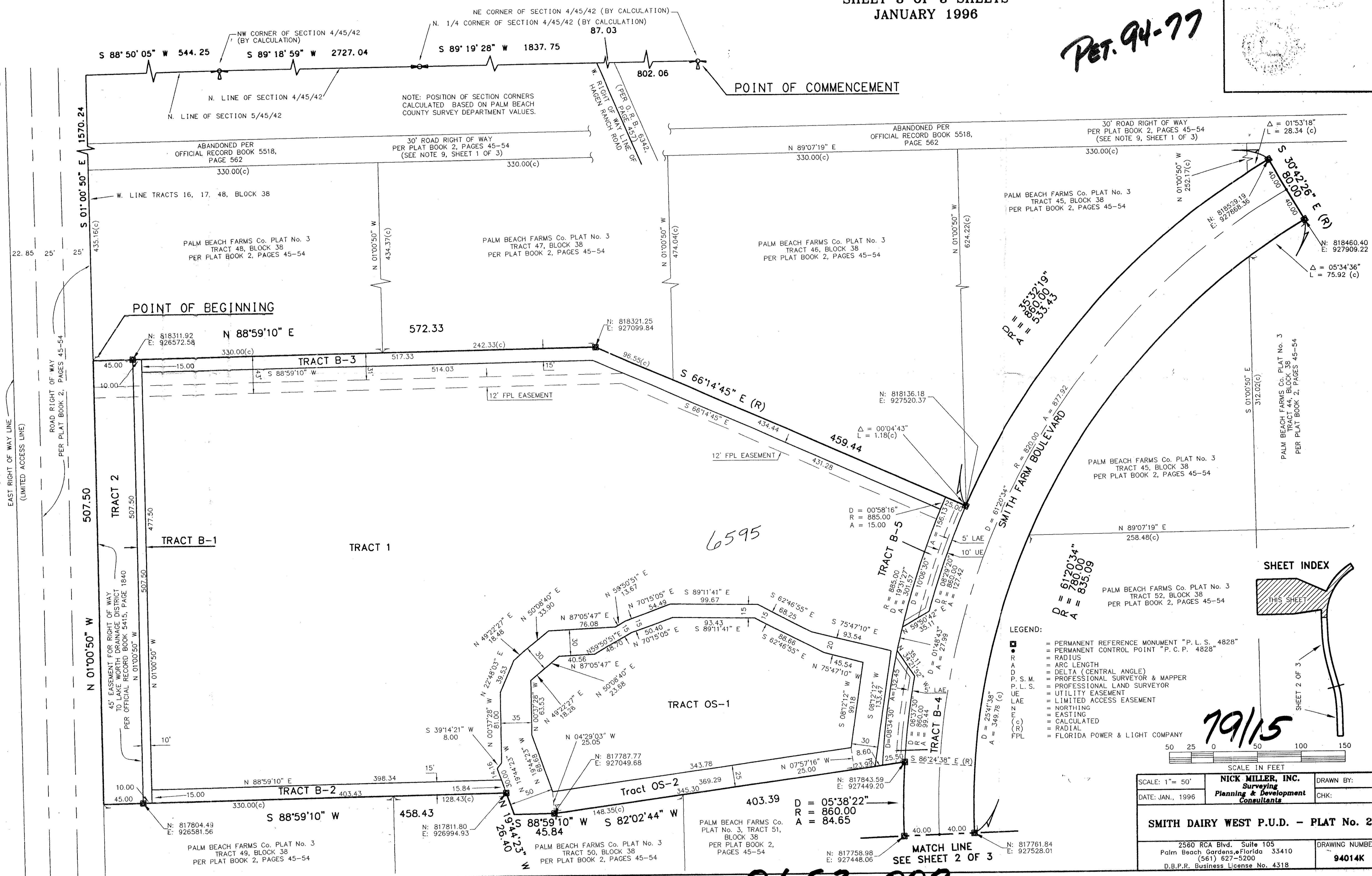


**SMITH DAIRY WEST P.U.D.-PLAT No. 2**  
 BEING A REPLAT OF PART OF BLOCK 38 OF PALM BEACH FARMS  
 COMPANY PLAT No. 3, AS RECORDED IN PLAT BOOK 2, PAGES  
 45 THROUGH 54 OF THE PUBLIC RECORDS OF PALM BEACH COUNTY, FLORIDA  
 IN PART OF SECTIONS 4 AND 5, TOWNSHIP 45 SOUTH, RANGE 42 EAST,  
 PALM BEACH COUNTY, FLORIDA  
 SHEET 3 OF 3 SHEETS  
 JANUARY 1996

PET. 94-77



**SUNSHINE STATE PARKWAY**  
 PER THE 1955 RIGHT OF WAY MAP  
 PREPARED BY GANNETT, FLEMING, CORDRY & CARPENTER, INC.  
 SHEET 8 OF 13

SUBDIVISION: SMITH DAIRY WEST PLAT 2  
 BOOK: 79  
 FLOOD MAP # 170A  
 ZONING: PD  
 ZIP CODE: 33467  
 FILE NAME: SMITH DAIRY WEST PLAT 2

79/15

SCALE: 1" = 50'	<b>NICK MILLER, INC.</b> Surveying Planning & Development Consultants	DRAWN BY:
DATE: JAN., 1996		CHK:
<b>SMITH DAIRY WEST P.U.D. - PLAT No. 2</b>		
2560 RCA Blvd., Suite 105 Palm Beach Gardens, Florida 33410 (561) 627-5200 D.B.P.R. Business License No. 4318	DRAWING NUMBER <b>94014K</b>	