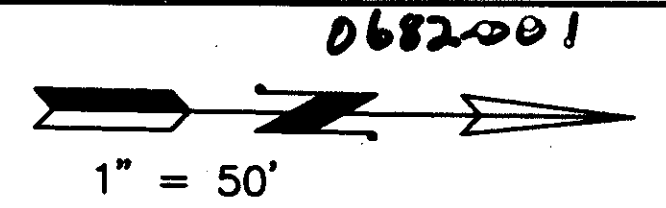


TWIN LAKES P.U.D.

BEING A REPLAT OF A PORTION OF BLOCKS 79, 80, 81, 112, 113 AND ALL OF TRACTS 82, 111, AND 114 OF THE PLAT OF "THE PALM BEACH FARMS CO. PLAT NO. 8 OF SEC.30, T.45S., R.43E., PALM BEACH COUNTY, FLORIDA" AS RECORDED IN PLAT BOOK 5, PAGE 73 OF THE PUBLIC RECORDS OF PALM BEACH COUNTY, FLORIDA
IN PART OF SECTION 30, TOWNSHIP 45 SOUTH, RANGE 48 EAST
PALM BEACH COUNTY, FLORIDA

SHEET NO. 4 OF 4

GEE & JENSON
 ENGINEERS - ARCHITECTS - PLANNERS, INC.
 WEST PALM BEACH, FLORIDA
 MARCH 1996



33

GRAPHIC SCALE

(IN FEET)
 1 inch = 50 feet

Ret. 95-97

STATE OF FLORIDA
 COUNTY OF PALM BEACH
 This plat was filed for record at _____ of _____ 1996, (and duly recorded in Plat Book No. _____ on Pages _____ thru _____)
 DOROTHY H. WILKEN
 Clerk Circuit Court
 By _____ D. C.

"THE PALM BEACH FARMS CO. PLAT NO. 8 OF SEC.30, T.45S., R.43E. PALM BEACH COUNTY, FLORIDA" PLAT BOOK 5, PAGE 73

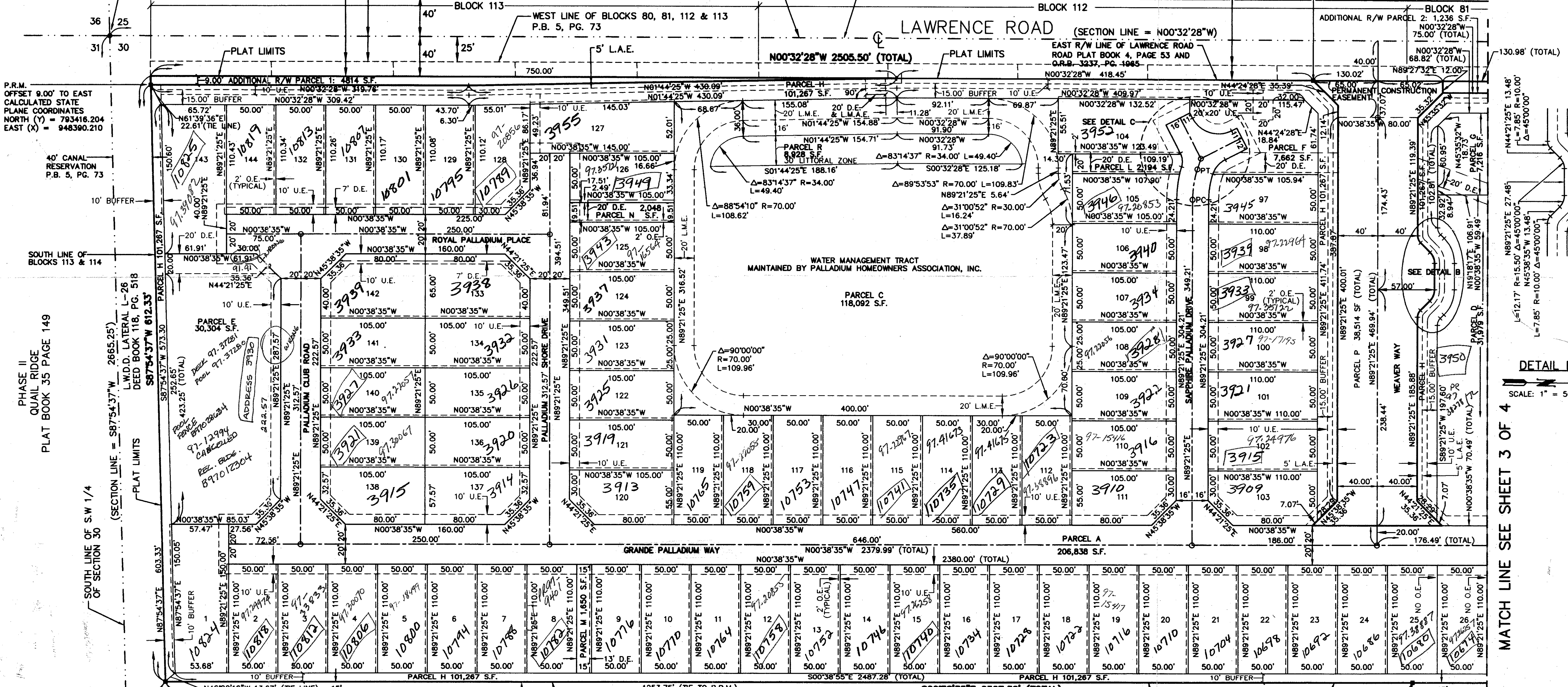
25' ROAD R/W AS PER "THE PALM BEACH FARMS CO. PLAT NO. 8 OF SEC.30, T.45S., R.43E. PALM BEACH COUNTY, FLORIDA" PLAT BOOK 5, PAGE 73

"P.V.T. PLAT" PLAT BOOK 33, PAGE 85

WEST LINE OF S.W. 1/4 OF SECTION 30

"THE PALM BEACH FARMS CO. PLAT NO. 8 OF SEC.30, T.45S., R.43E. PALM BEACH COUNTY, FLORIDA" PLAT BOOK 5, PAGE 73

P.R.M. CALCULATED STATE PLANE COORDINATES NORTH (Y) = 794584.320 EAST (X) = 948370.178



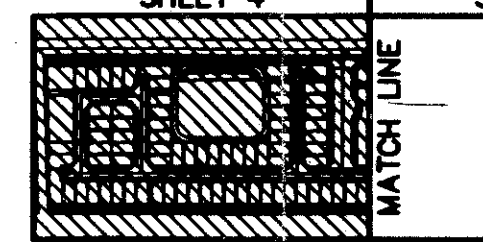
P.R.M. OFFSET 9.00' TO EAST CALCULATED STATE PLANE COORDINATES NORTH (Y) = 793416.204 EAST (X) = 948390.210

40' CANAL RESERVATION P.B. 5, PG. 73

PHASE II QUAIL RIDGE PLAT BOOK 35 PAGE 149

SOUTH LINE OF S.W. 1/4 OF SECTION 30

S.E. CORNER OF S.W. 1/4 OF SECTION 30 PUBLISHED STATE PLANE COORDINATES NORTH (Y) = 793471.609 EAST (X) = 951005.180 NO MONUMENT FOUND OR SET



30' PLATTED ROADWAY AS PER PLAT BOOK 5, PAGE 73 ABANDONED BY RESOLUTION RECORDED IN O.R.B. 3233, PAGE 1668

"PLAT NO. 21 QUAIL RIDGE" PLAT BOOK 40, PAGE 172

DETAIL C SCALE: 1" = 50'

DETAIL B SCALE: 1" = 50'

MATCH LINE SEE SHEET 3 OF 4

E:\243-PO4.dwg Last Update: 12/13/1996 11:14 am By: HOBAN Plot Scale: 1"=50.0 Xref Dwg's

SUBDIVISION # TWIN LAKES
 BOOK 79 PAGE 33
 FLOOD ZONE B/A/H FLOOD MAP # 190B
 QUAD # 20 ZIP CODE 33436
 PUB NAME TWIN LAKES

COMPUTED _____
 DRAWN MKH
 CHECKED _____
 APPROVED _____
 JOB NO. 95-243.20

THIS INSTRUMENT PREPARED BY:
 JAMES A. DAVIS, PLS
 FOR GEE & JENSON ENGINEERS - ARCHITECTS - PLANNERS, INC.
 ONE HARVARD CIRCLE
 WEST PALM BEACH, FLORIDA 33409-1923

NOTE: ALL LOT LINES ARE NON-RADIAL UNLESS OTHERWISE NOTED.

0682-001 **79/33**