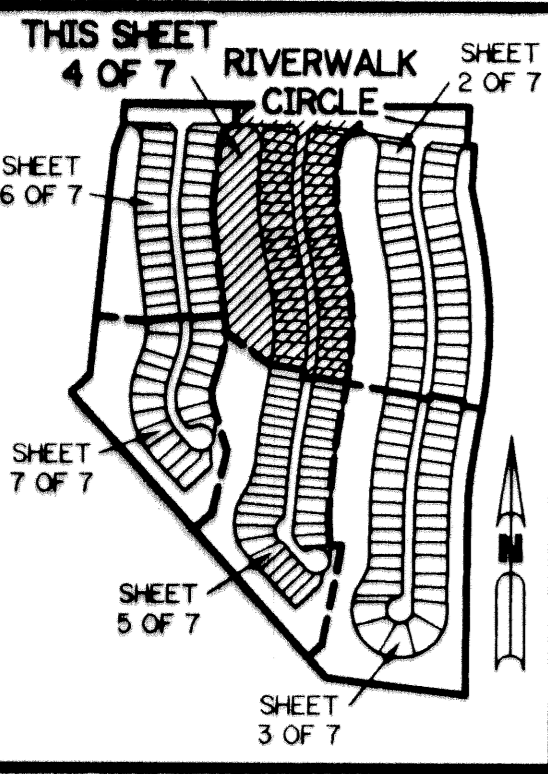


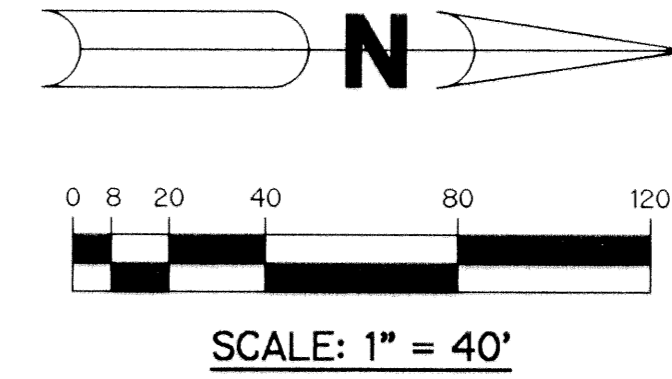
# RIVERWALK - PLAT FOUR

A PARCEL OF LAND LYING IN SECTION 21, TOWNSHIP 43 SOUTH, RANGE 42 EAST, CITY OF WEST PALM BEACH, PALM BEACH COUNTY, FLORIDA.

SHEET 4 OF 7 JANUARY, 1997

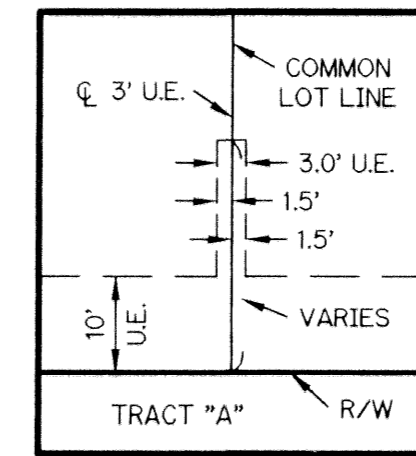
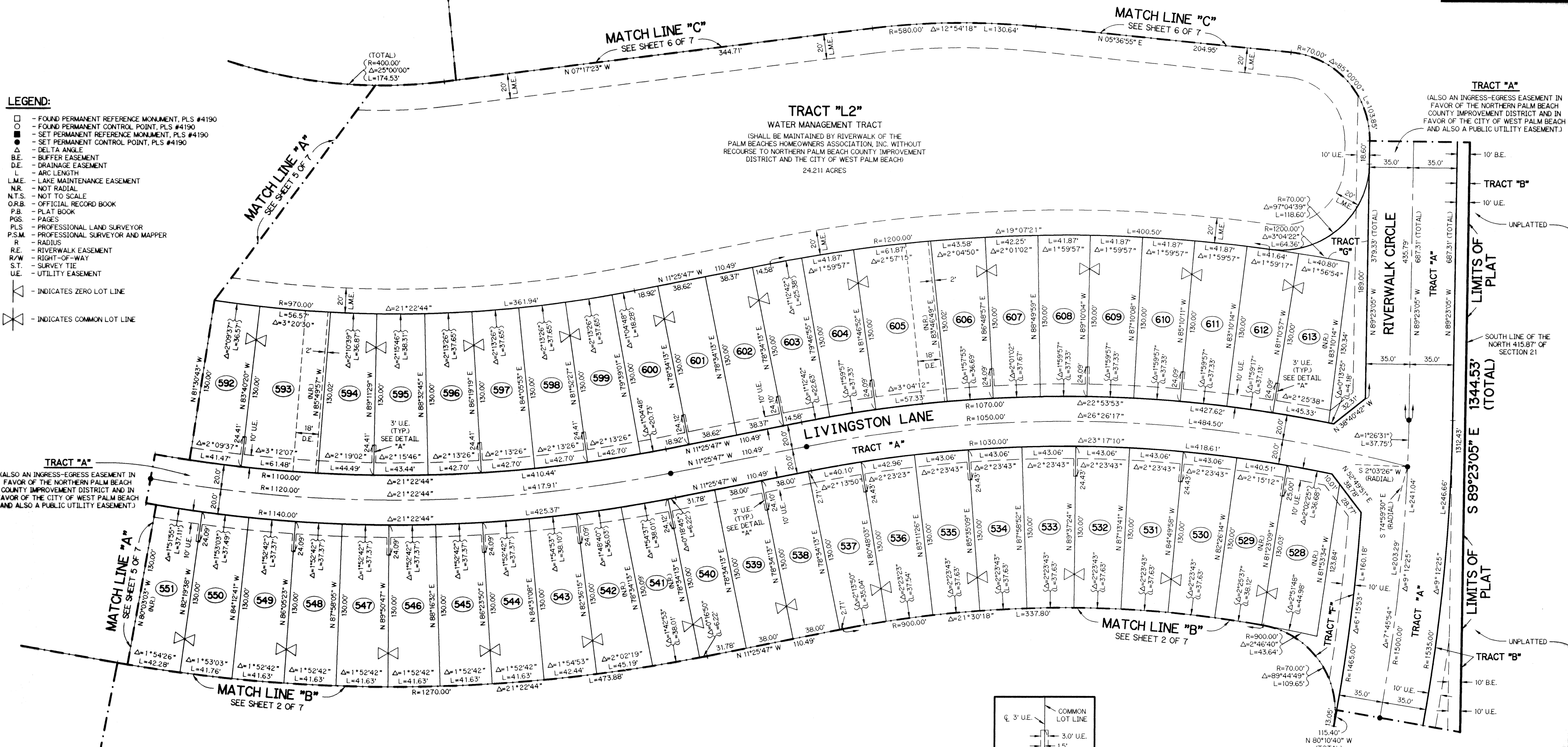


KEY MAP  
N.T.S.



### LEGEND:

- - FOUND PERMANENT REFERENCE MONUMENT, PLS #4190
- - FOUND PERMANENT CONTROL POINT, PLS #4190
- - SET PERMANENT REFERENCE MONUMENT, PLS #4190
- - SET PERMANENT CONTROL POINT, PLS #4190
- Δ - DELTA ANGLE
- B.E. - BUFFER EASEMENT
- D.E. - DRAINAGE EASEMENT
- L - ARC LENGTH
- L.M.E. - LAKE MAINTENANCE EASEMENT
- N.R. - NOT RADIAL
- N.T.S. - NOT TO SCALE
- O.R.B. - OFFICIAL RECORD BOOK
- P.B. - PLAT BOOK
- P.S. - PAGES
- PLS - PROFESSIONAL LAND SURVEYOR
- P.S.M. - PROFESSIONAL SURVEYOR AND MAPPER
- R - RADIUS
- R.E. - RIVERWALK EASEMENT
- R/W - RIGHT-OF-WAY
- S.T. - SURVEY TIE
- U.E. - UTILITY EASEMENT
- - INDICATES ZERO LOT LINE
- ⊗ - INDICATES COMMON LOT LINE



DETAIL "A"  
SCALE: 1" = 20'

THIS INSTRUMENT PREPARED BY  
WILBUR F. DIVINE, P.S.M. 4190, STATE OF FLORIDA  
LAWSON, NOBLE AND WEBB, INC.  
ENGINEERS PLANNERS SURVEYORS  
WEST PALM BEACH, FLORIDA