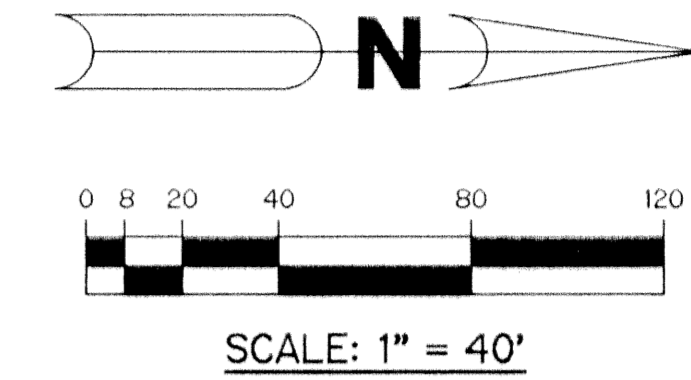
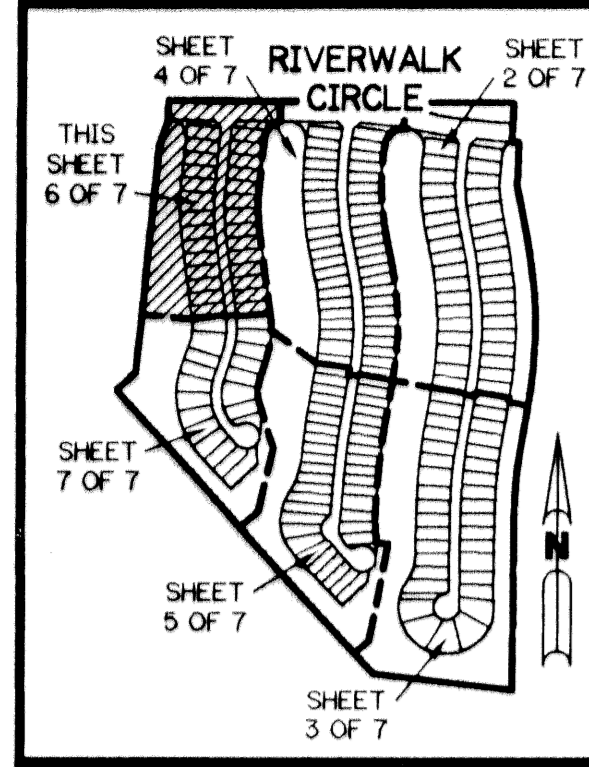


# RIVERWALK - PLAT FOUR

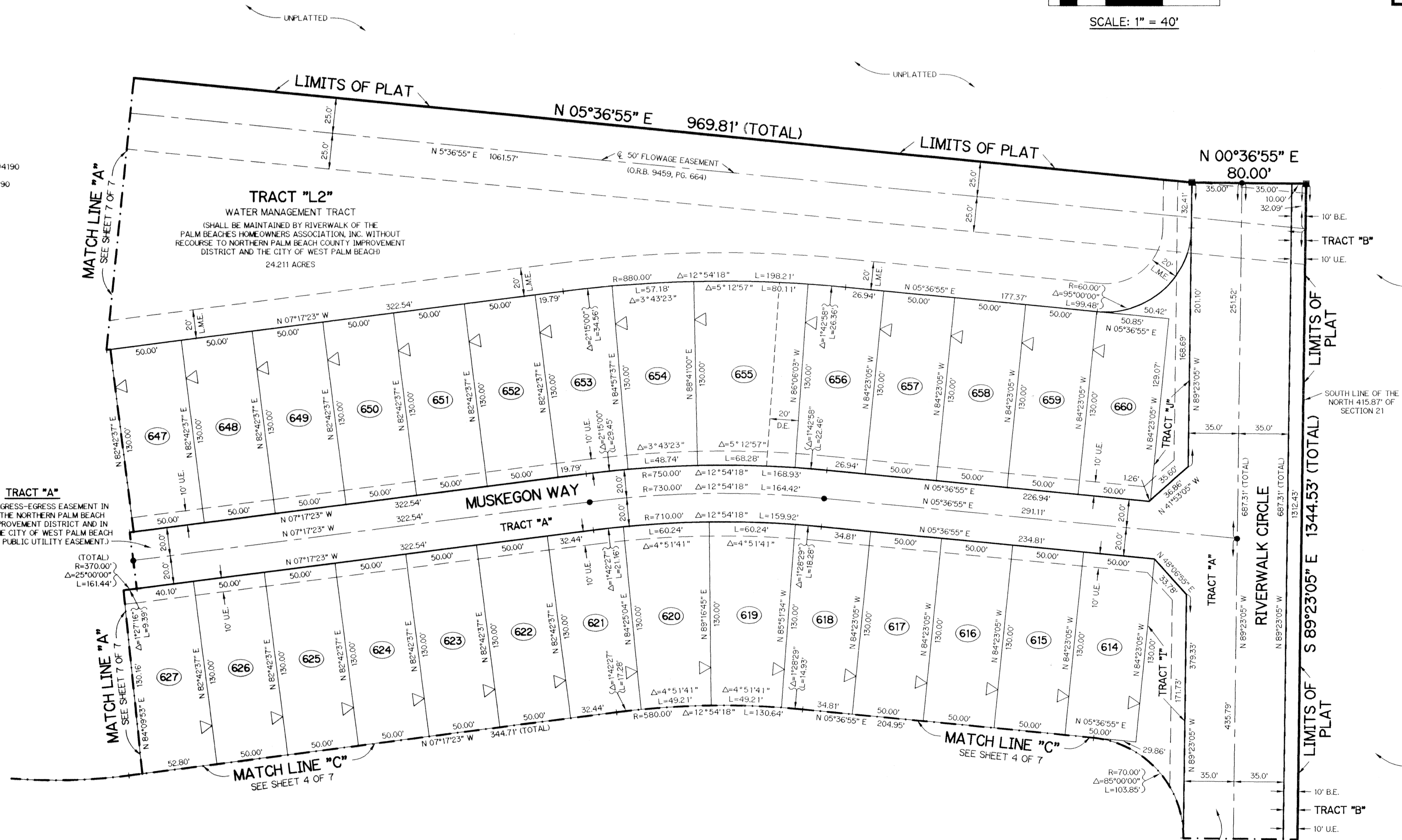
A PARCEL OF LAND LYING IN SECTION 21, TOWNSHIP 43 SOUTH,  
RANGE 42 EAST, CITY OF WEST PALM BEACH,  
PALM BEACH COUNTY, FLORIDA.

SHEET 6 OF 7      JANUARY, 1997



### LEGEND:

- - FOUND PERMANENT REFERENCE MONUMENT, PLS #4190
- - FOUND PERMANENT CONTROL POINT, PLS #4190
- - SET PERMANENT REFERENCE MONUMENT, PLS #4190
- - SET PERMANENT CONTROL POINT, PLS #4190
- Δ - DELTA ANGLE
- B.E. - BUFFER EASEMENT
- D.E. - DRAINAGE EASEMENT
- L - ARC LENGTH
- L.M.E. - LAKE MAINTENANCE EASEMENT
- N.R. - NOT RADIAL
- N.T.S. - NOT TO SCALE
- O.R.B. - OFFICIAL RECORD BOOK
- P.B. - PLAT BOOK
- PGS. - PAGES
- PLS - PROFESSIONAL LAND SURVEYOR
- P.S.M. - PROFESSIONAL SURVEYOR AND MAPPER
- R - RADIUS
- R.E. - RIVERWALK EASEMENT
- R/W - RIGHT-OF-WAY
- S.T. - SURVEY TIE
- U.E. - UTILITY EASEMENT
- △ - INDICATES ZERO LOT LINE
- △ - INDICATES COMMON LOT LINE



THIS INSTRUMENT PREPARED BY  
WILBUR F. DIVINE, P.S.M. 4190, STATE OF FLORIDA  
LAWSON, NOBLE AND WEBB, INC.  
ENGINEERS PLANNERS SURVEYORS  
WEST PALM BEACH, FLORIDA

**TRACT "A"**  
(ALSO AN INGRESS-EGRESS EASEMENT IN FAVOR OF THE NORTHERN PALM BEACH COUNTY IMPROVEMENT DISTRICT AND IN FAVOR OF THE CITY OF WEST PALM BEACH AND ALSO A PUBLIC UTILITY EASEMENT.)

SUBDIVISION RIVERWALK PLAT 4  
 BOOK 99 PAGE 39  
 FLOOD ZONE F-3  
 FLOOD MAP  
 QUAD  
 SE  
 ZIP CODE  
 PID NAME City of West Palm Beach