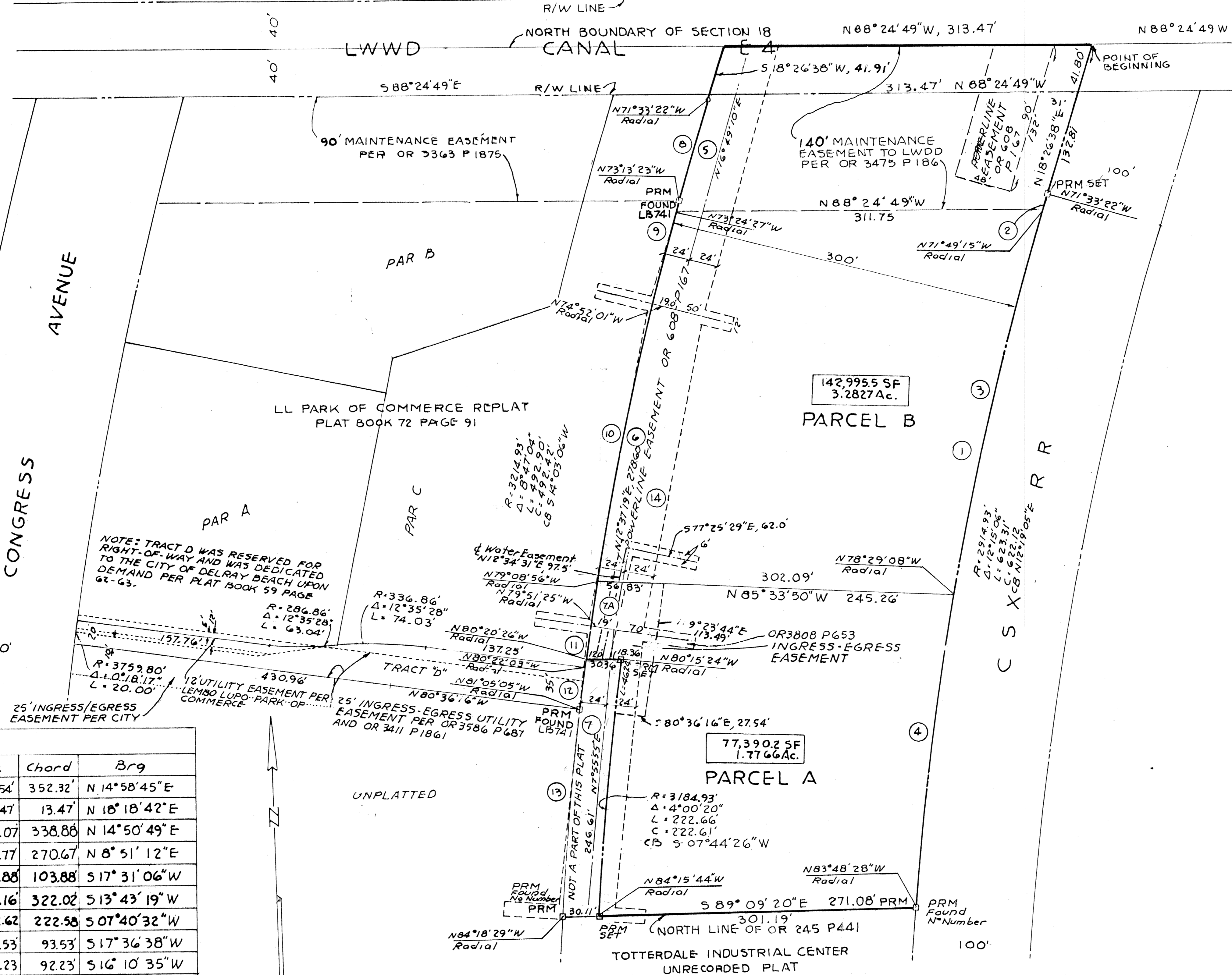
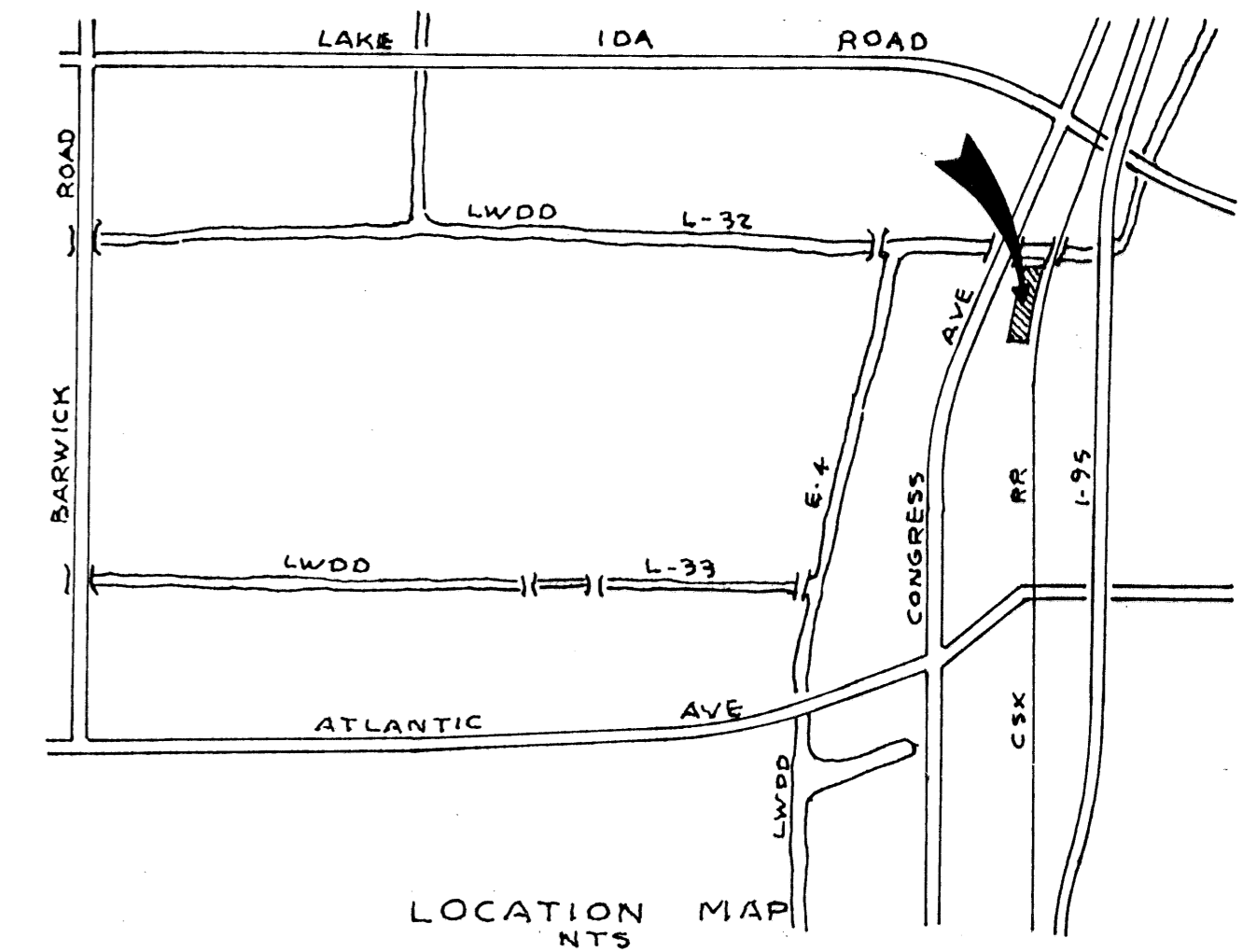


# NORJAC

LYING IN THE NORTHEAST QUARTER OF SECTION 18, TOWNSHIP 46 SOUTH, RANGE 43 EAST, PALM BEACH COUNTY, FLORIDA  
 WALTER A. CORNELL, INC CONSULTING ENGINEERS & LAND SURVEYORS  
 SEPTEMBER 1996 SHEET 2 OF 2  
 CITY OF DELRAY BEACH

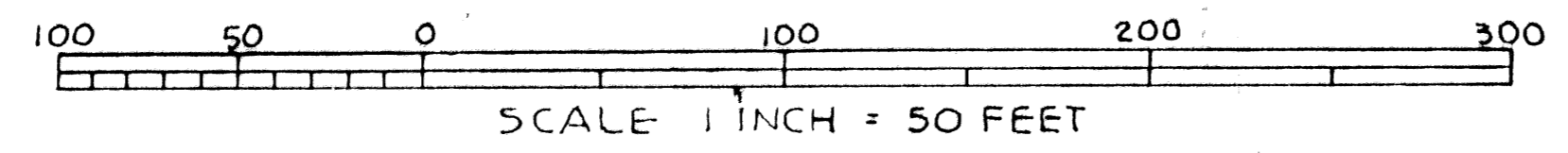


POINT OF COMMENCEMENT  
 NORTHEAST CORNER  
 SECTION 18, TWP 46  
 RGE 43 E



- NOTES:
1. PRM denotes Permanent Reference Monument
  2. PCP denotes Permanent Reference Monument
  3. Bearings shown based on assumed datum with the North line of Section 18 being S 88°24'49" E
  4. Structures, trees, or shrubs are not permitted in utility easement and ingress-egress easements created by this plat.
  5. The owner shall be responsible for all on-site paving and drainage
  6. This instrument was prepared by Kelly Coletto at the Offices of Walter A. Cornell, Inc, 22 Southeast 4th Street, Boca Raton, Florida
  7. There may be additional restrictions that are not recorded on this plat that may be found in the public records of this County

N°	Radius	Angle	Arc	Chord	Brg
1	2914.93'	6° 55' 46"	352.54'	352.32'	N 14° 58' 45" E
2	"	0° 15' 53"	13.47'	13.47'	N 18° 18' 42" E
3	"	6° 39' 53"	339.07'	338.88'	N 14° 50' 49" E
4	2914.93'	5° 19' 20"	270.77'	270.67'	N 8° 51' 12" E
5	3214.93'	1° 51' 05"	103.88'	103.88'	S 17° 31' 06" W
6	"	5° 44' 29"	322.16'	322.02'	S 13° 43' 19" W
7	"	3° 58' 03"	222.62'	222.58'	S 07° 40' 32" W
8	"	1° 40' 01"	93.53'	93.53'	S 17° 36' 38" W
9	"	1° 38' 38"	92.23'	92.23'	S 16° 10' 35" W
10	"	4° 55' 24"	280.00'	279.91'	S 12° 51' 34" W
11	"	0° 30' 38"	28.65'	28.65'	S 09° 53' 16" W
12	"	0° 43' 02"	40.24'	40.24'	S 09° 16' 26" W
13	"	3° 13' 24"	180.86'	180.84'	S 07° 18' 13" W
14	3214.93'	12° 45' 07"	715.53'	714.05'	S 12° 04' 05" W
7A	3214.93'	1° 11' 30"	66.87'	66.86'	S 10° 15' 19" W



LEGEND  
 TWP TOWNSHIP  
 RGE RANGE  
 RR RAILROAD  
 LWDD LAKE WORTH DRAINAGE DISTRICT

SUBDIVISION NORJAC PAGE 52  
 BOOK 79 FLOOD MAP  
 FLOOD ZONE ZONING  
 QUAD ZIP CODE  
 SE  
 PUD NAME CITY OF DELRAY BEACH