

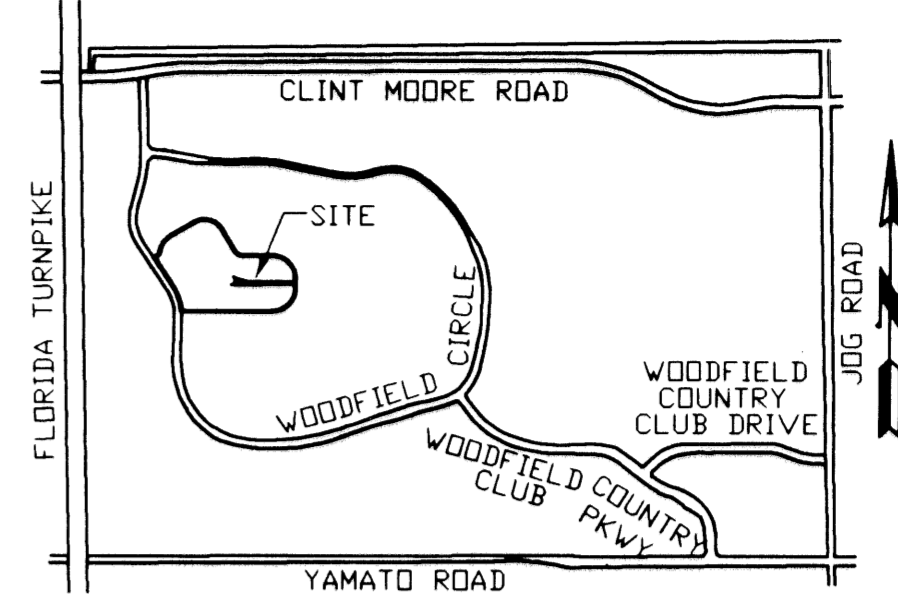
BRIARCLIFF AT WOODFIELD COUNTRY CLUB PLAT TWO

BEING A REPLAT OF PARCEL F OF "BRIARCLIFF AT WOODFIELD COUNTRY CLUB" AS RECORDED IN PLAT BOOK 75, PAGE 80 OF THE PUBLIC RECORDS OF PALM BEACH COUNTY, FLORIDA AND BEING A PART OF SECTION 4, TOWNSHIP 47 SOUTH, RANGE 42 EAST CITY OF BOCA RATON, PALM BEACH COUNTY, FLORIDA

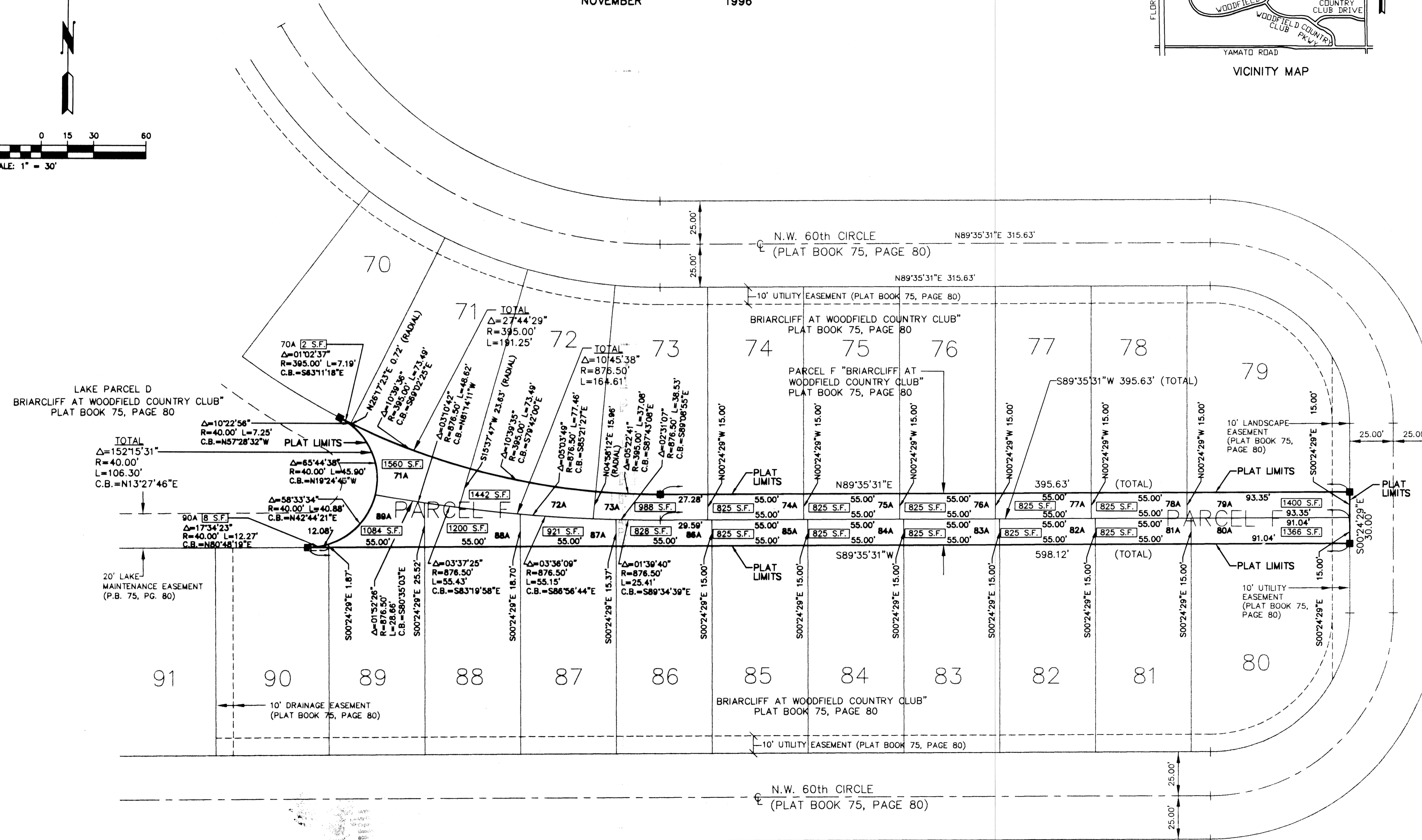
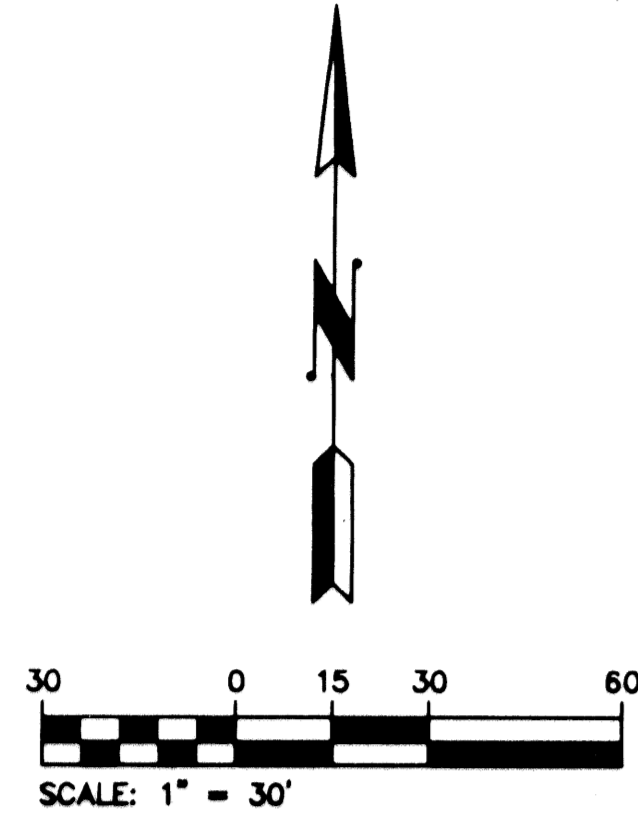
SHEET NO. 2 OF 2

GEE & JENSON
ENGINEERS - ARCHITECTS - PLANNERS, INC.
WEST PALM BEACH, FLORIDA
NOVEMBER 1996

60



STATE OF FLORIDA
COUNTY OF PALM BEACH
This plat was filed for record at _____ day of _____ 1997, and duly recorded in Plat Book No. _____ thru _____
DOROTHY H. WILKEN
Clerk Circuit Court
By _____ D. C.



SUBDIVISION # CL 75 PLAT TWO
 BOOK 75 PAGE 60
 FLOOD MAP #
 ZONING
 CITY OF BOCA RATON

COMPUTED MKH
 DRAWN MKH
 CHECKED PSM
 APPROVED
 93-330.14

THIS INSTRUMENT PREPARED BY:
 JAMES A. DAVIS, PSM
 FOR GEE & JENSON, ENGINEERS - ARCHITECTS - PLANNERS, INC.
 (FLORIDA CERTIFICATE OF AUTHORIZATION NUMBER LB2934)
 ONE HARVARD CIRCLE
 WEST PALM BEACH, FLORIDA 33409-1923

LINES SHOWN HEREON ARE NON-RADIAL UNLESS OTHERWISE NOTED.