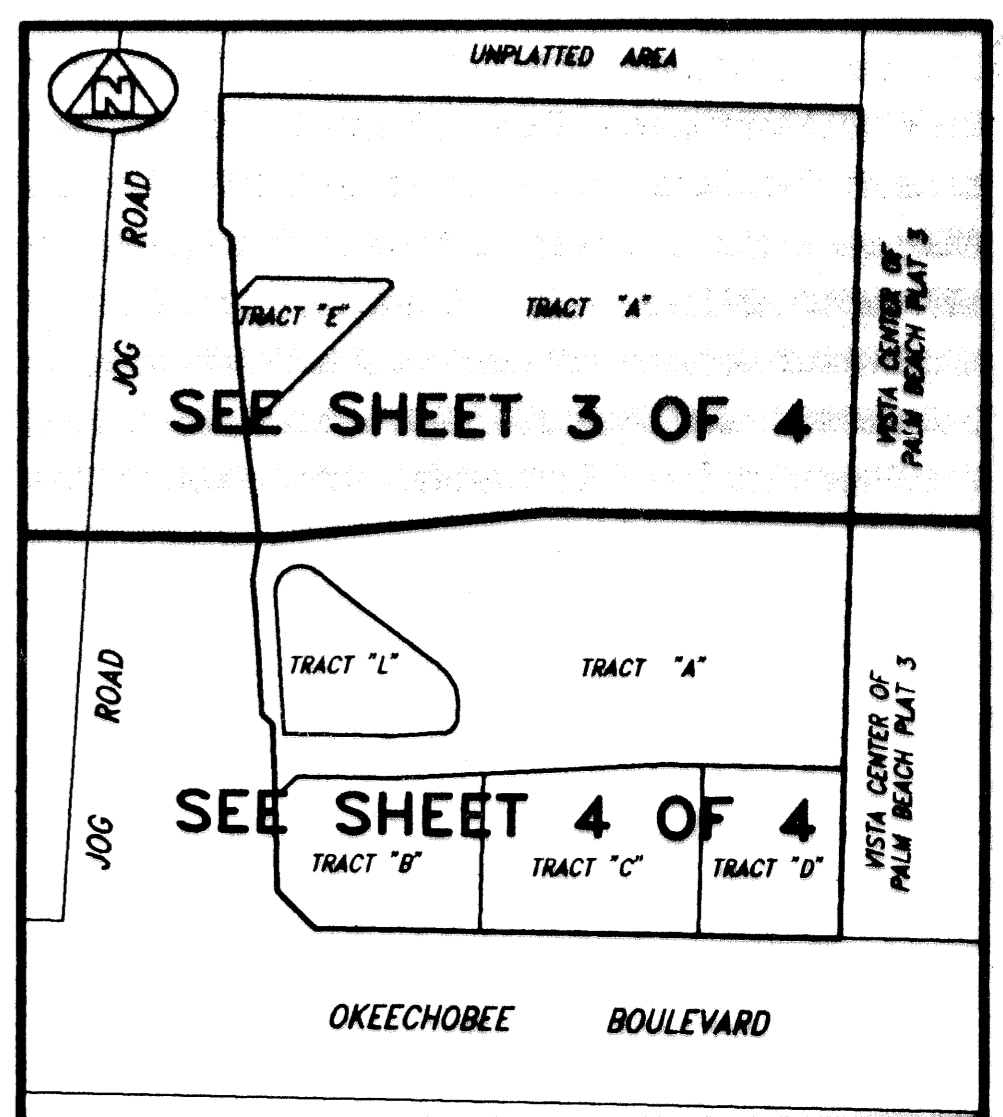
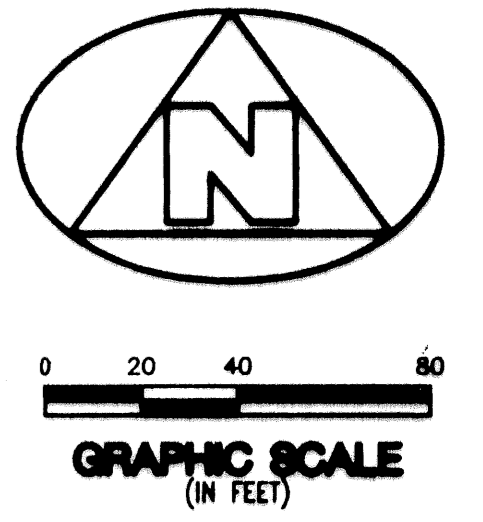
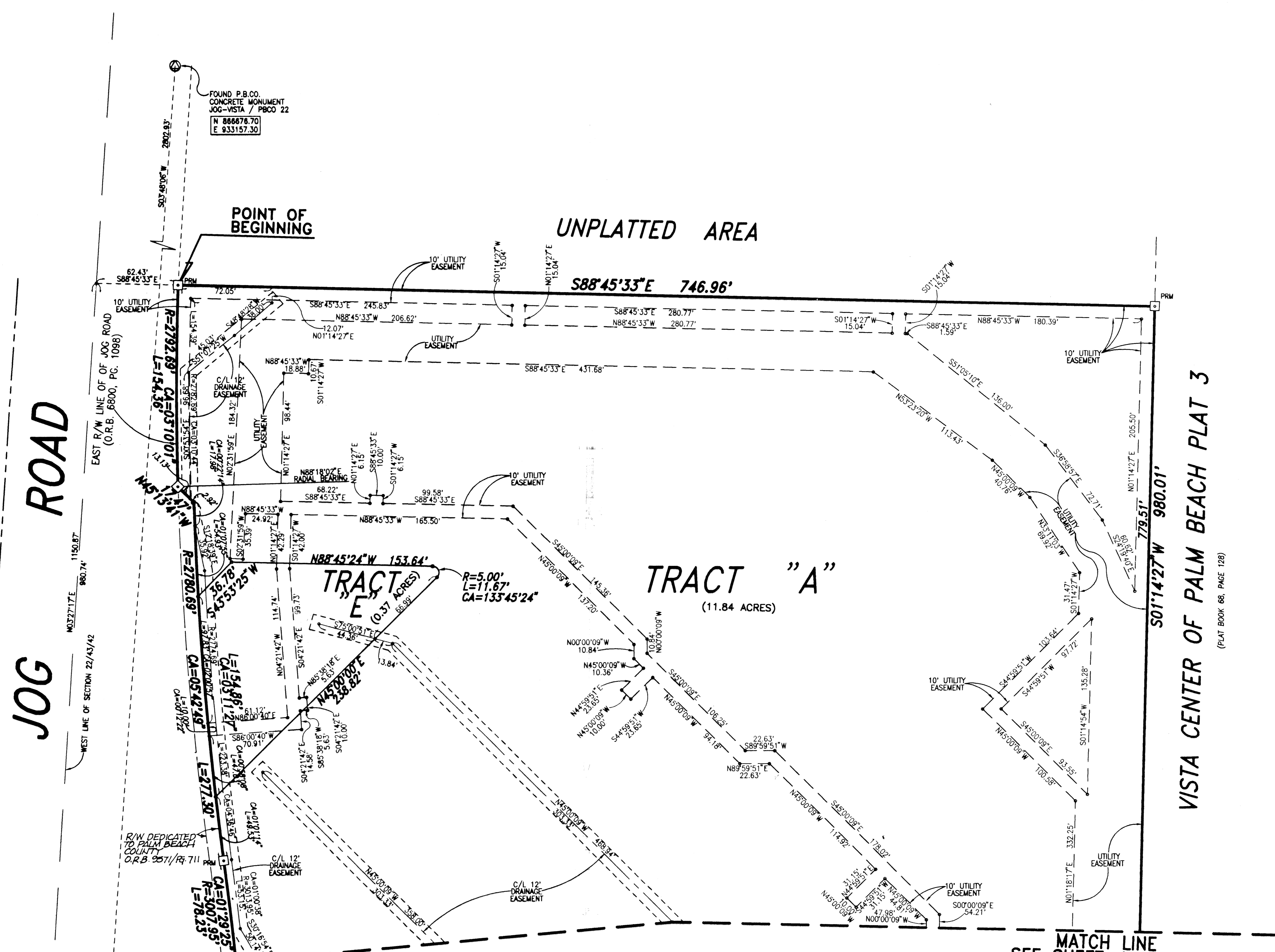


A PLAT OF A PARCEL OF LAND LYING IN THE SOUTHWEST ONE-QUARTER (SW 1/4) OF SECTION 22, TOWNSHIP 43 SOUTH, RANGE 42 EAST, CITY OF WEST PALM BEACH, PALM BEACH COUNTY, FLORIDA.



- SURVEYOR'S NOTES AND LEGEND:**
1. LINES WHICH INTERSECT CURVES ARE NOT RADIAL, UNLESS OTHERWISE NOTED.
 2. C/L DENOTES CENTERLINE
 3. R/W DENOTES RIGHT OF WAY
 4. O.R.B. DENOTES OFFICIAL RECORDS BOOK
 5. [PRM] DENOTES A SET #2424 PERMANENT REFERENCE MONUMENT (P.R.M.)
 6. N=987645.17 = NORTHING COORDINATE
E=865432.26 = EASTING COORDINATE
 7. P.B.CO. DENOTES PALM BEACH COUNTY

THIS INSTRUMENT WAS PREPARED BY WM. R. VAN CAMPEN, R.L.S., IN AND FOR THE OFFICES OF BENCH MARK LAND SURVEYING & MAPPING, INC., 4152 WEST BLUE HERON BOULEVARD, SUITE 121, RIVIERA BEACH, FLORIDA.

BENCH MARK
Land Surveying and Mapping, Inc.
4152 West Blue Heron Blvd., Suite 121, Riviera Beach, FL 33404
Fax: (407) 844-9659 Phone: (407) 848-2102

RECORD PLAT
LAKE POINT CENTRE

DWN	S.E.G.	FB	DATE	05/30/96	WO.#	P180
CKD	FILE	PLATT.dwg	SCALE	1" = 40'	SHEET	3 OF 4

SUBDIVISION LAKE POINT CENTRE
BOOK 79 PAGE 63
FLOOD ZONE FLOOD MAP
ZONING
ZIP CODE
CITY OF WEST PALM BEACH

MATCH LINE
SEE SHEET 4 OF 4

MATCH LINE
SEE SHEET 4 OF 4

VISTA CENTER OF PALM BEACH PLAT 3
(PLAT BOOK 68, PAGE 128)