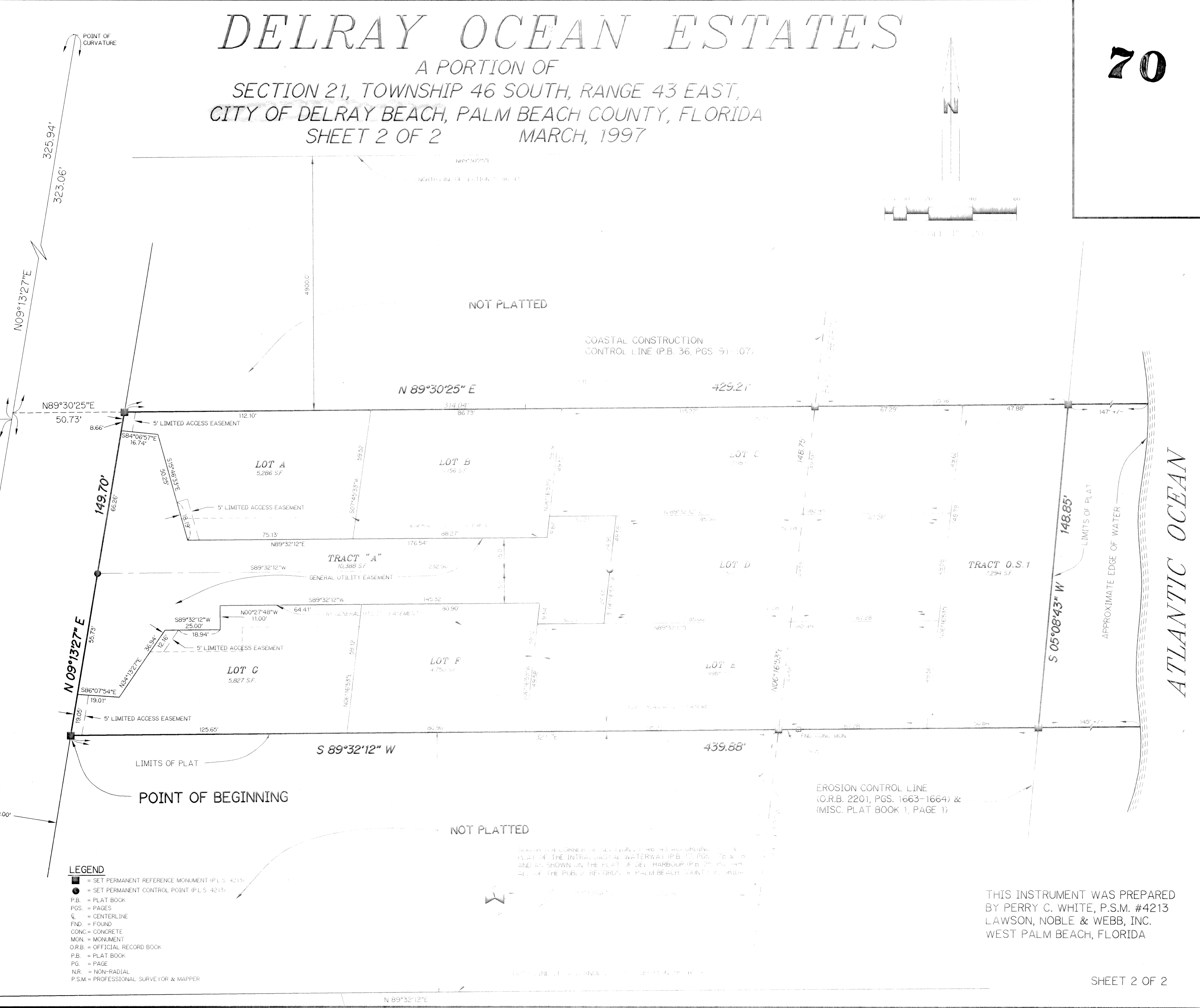
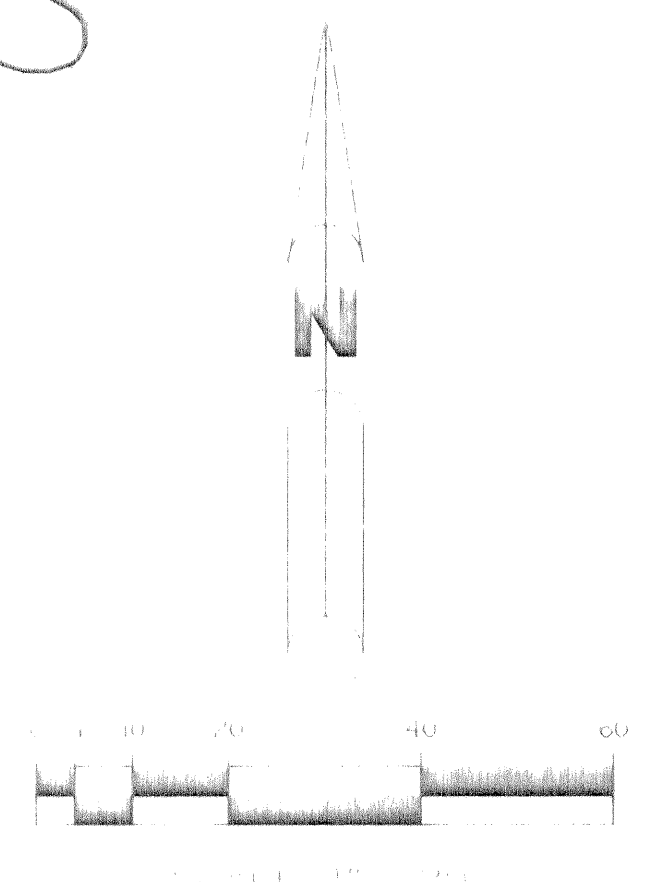
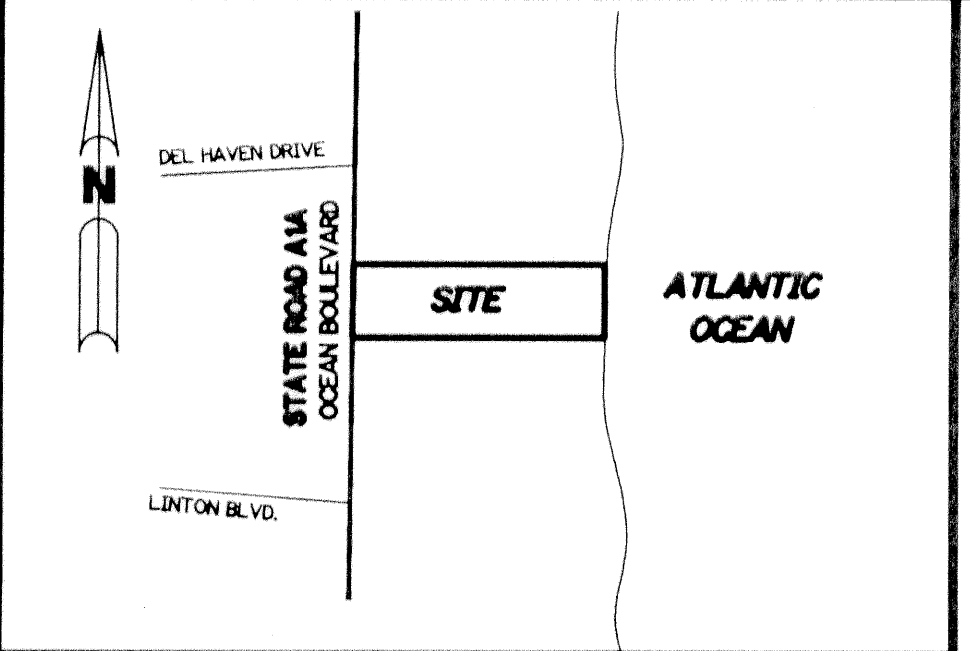


DELRAY OCEAN ESTATES

A PORTION OF
SECTION 21, TOWNSHIP 46 SOUTH, RANGE 43 EAST,
CITY OF DELRAY BEACH, PALM BEACH COUNTY, FLORIDA
SHEET 2 OF 2 MARCH, 1997



SUBDIVISION **DELRAY OCEAN ESTATES**
BOOK **79** PAGE **70**
FLOOD MAP #
FLOOD ZONE
QUAD #
ZONING
SE
ZIP CODE
PUD NAME **CITY OF DELRAY BEACH**

- LEGEND**
- = SET PERMANENT REFERENCE MONUMENT (P.L.S. 4213)
 - = SET PERMANENT CONTROL POINT (P.L.S. 4213)
 - P.B. = PLAT BOOK
 - PGS. = PAGES
 - CL = CENTERLINE
 - FND. = FOUND
 - CONC. = CONCRETE
 - MON. = MONUMENT
 - O.R.B. = OFFICIAL RECORD BOOK
 - P.B. = PLAT BOOK
 - PG. = PAGE
 - N.R. = NON-RADIAL
 - P.S.M. = PROFESSIONAL SURVEYOR & MAPPER

EROSION CONTROL LINE
(O.R.B. 2201, PGS. 1663-1664) &
(MISC. PLAT BOOK 1, PAGE 1)

THIS INSTRUMENT WAS PREPARED
BY PERRY C. WHITE, P.S.M. #4213
LAWSON, NOBLE & WEBB, INC.
WEST PALM BEACH, FLORIDA