

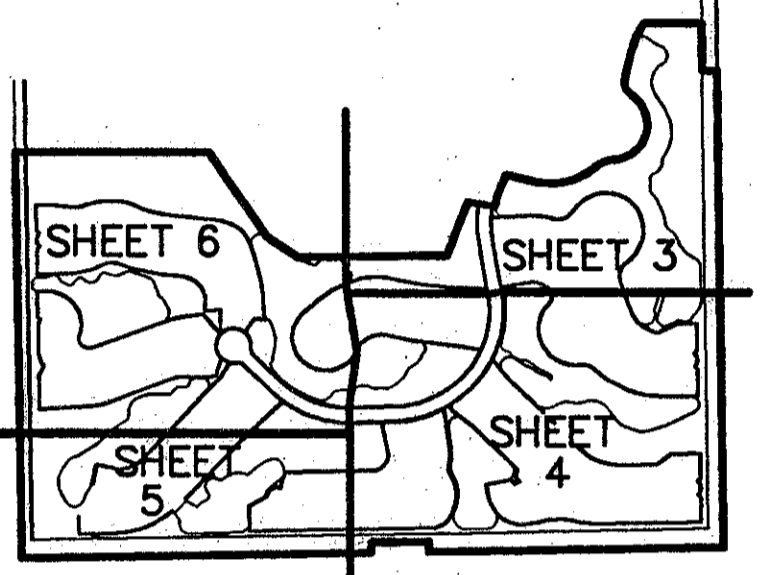
ADDISON RESERVE PLAT FOUR

PART OF GLENEAGLES/POLO CLUB WEST P.U.D.
 SITUATE IN SECTION 28, TOWNSHIP 46 SOUTH, RANGE 42 EAST
 AND BEING A REPLAT OF A PORTION OF "THE PALM BEACH FARMS COMPANY
 PLAT NO. 1" (P.B. 2, PGS. 26-28)
 PALM BEACH COUNTY, FLORIDA
 OCTOBER, 1996 SHEET 3 OF 6

78

STATE OF PALM BEACH
 COUNTY OF PALM BEACH
 THIS PLAT WAS FILED FOR
 RECORD _____ DAY OF _____
 AD, 1997 AND DULY RECORDED
 IN PLAT BOOK _____ ON PAGES
 _____ AND _____
 DOROTHY H. WILKEN, CLERK
 BY: _____, D.C.

CIRCUIT COURT SEAL



SHEET LOCATION MAP
(NOT TO SCALE)

LEGEND

BE	BUFFER EASEMENT
Δ	CENTRAL (DELTA) ANGLE
DE	DRAINAGE EASEMENT
FPL	FLORIDA POWER & LIGHT
L	ARC LENGTH
LAE	LIMITED ACCESS EASEMENT
LE	LANDSCAPE EASEMENT
LM	LAKE MAINTENANCE ACCESS EASEMENT
LME	LAKE MAINTENANCE EASEMENT
LWD	LAKE WORTH DRAINAGE DISTRICT
(NR)	NON-RADIAL
ORB	OFFICIAL RECORD BOOK
PB	PLAT BOOK
PB(S)	PAGE(S)
R	RADIUS
UE	UTILITY EASEMENT
PM	PERMANENT REFERENCE MONUMENT
PRM	PERMANENT REFERENCE MONUMENT SET PLS# 4763
PCP	PERMANENT CONTROL POINT SET PLS# 4763
CL	CENTRAL LINE

NOT PLATTED
 PET. 80-215

79/78
 SHEET 3 OF 6

Palm Beach County Control Point "GATTO"
 Brass Disc in Concrete
 N 763501.6313
 E 928321.8927

Palm Beach County Control Point "GAST"
 Brass Disc in Concrete
 N 763538.3000
 E 931367.3500

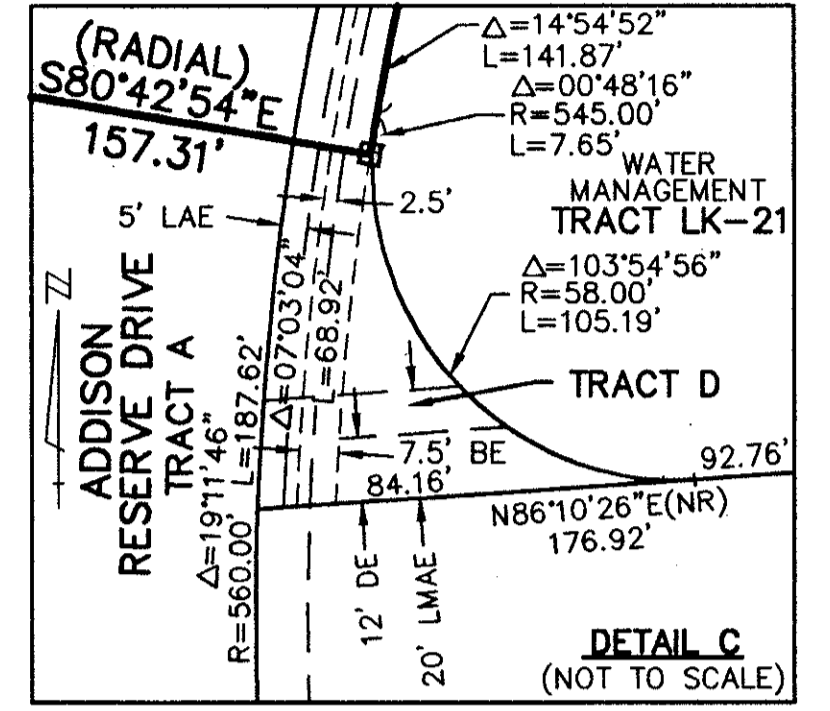
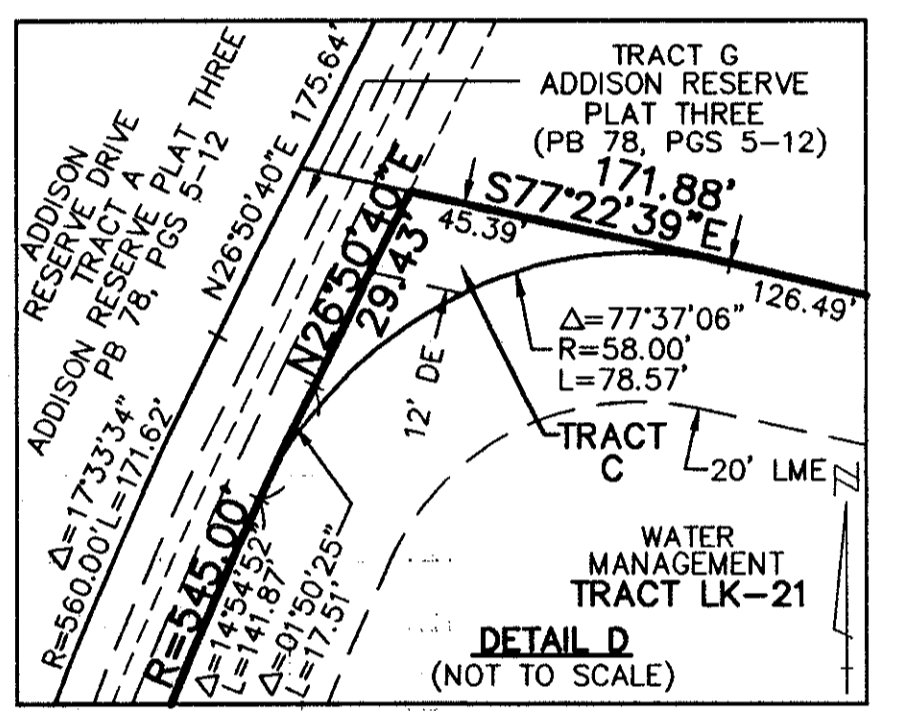
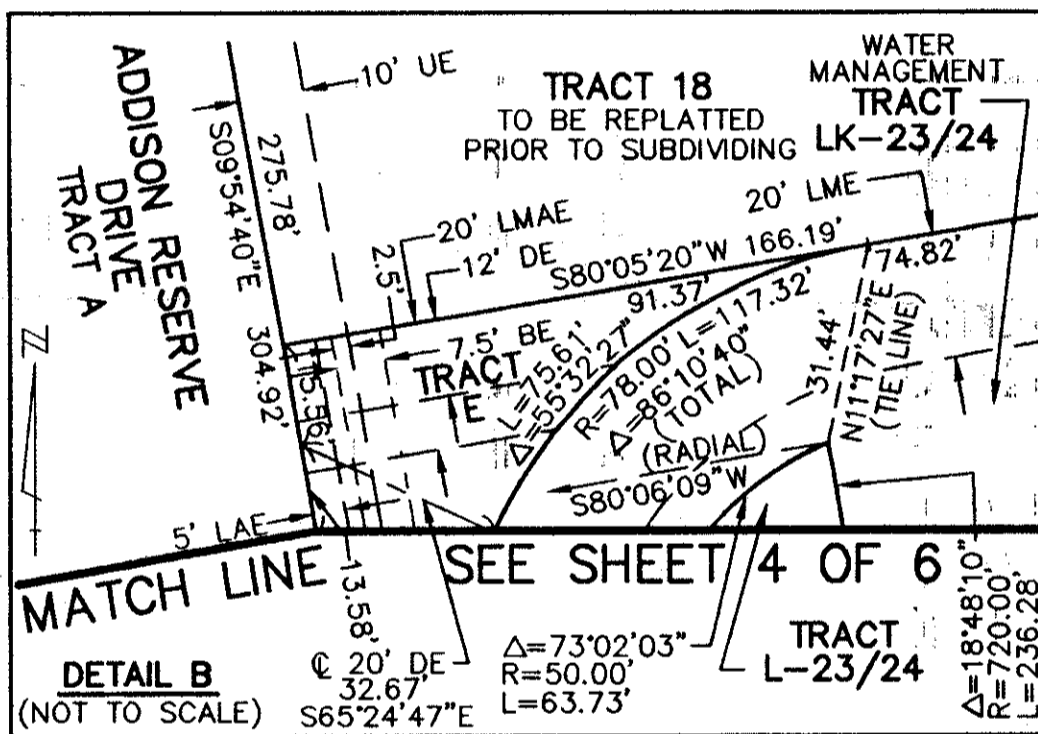
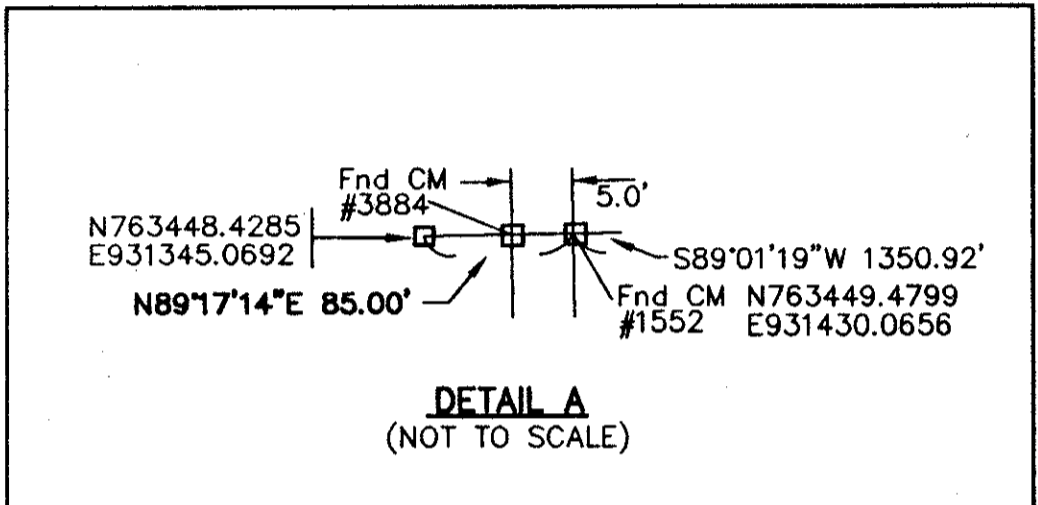
3045.57

ALL DISTANCES ARE GROUND
 SCALE FACTOR = 1.0000338

COORDINATES SHOWN ARE GRID
 DATUM = NAD 83 1990 ADJUSTMENT
 ZONE = FLORIDA EAST
 LINEAR UNIT = US SURVEY FEET
 COORDINATE SYSTEM 1983 STATE PLANE
 TRANSVERSE MERCATOR PROJECTION
 GROUND DISTANCE X SCALE FACTOR = GRID

N89°17'14"E (Plat) 00°00'15" Bearing
 N89°17'29"E (Grid) Clockwise Rotation
 (Plat to Grid)

SOUTH LINE
 TRACT N
 ADDISON RESERVE PLAT ONE
 PB 75, PGS 143-149



MATCH LINE - SEE SHEET 6 OF 6

MATCH LINE

SEE SHEET 4 OF 6

REV. 01-29-97
 CAD FILE:
 TWKADD\ADDOR22

THIS INSTRUMENT WAS PREPARED BY MARY HANNA CLODFELTER, P.S.M. IN
 THE OFFICES OF MOCK, ROOS & ASSOCIATES, INC., 5720 CORPORATE WAY,
 WEST PALM BEACH, FLORIDA 33407.

SCALE:
 1"=80'
 P.A. NO.:
 94182.27
 DATE:
 OCTOBER 1996
 DRAWING NO.:
 46-42-28-115

MOCK ROOS
 ENGINEERS SURVEYORS PLANNERS
 5720 Corporate Way, West Palm Beach, Florida 33407
 (407) 683-3113, fax 478-7248

**ADDISON RESERVE
 PLAT FOUR**
 PART OF GLENEAGLES/POLO CLUB WEST P.U.D.
 SITUATE IN SECTION 28, TOWNSHIP 46 SOUTH, RANGE 42 EAST
 AND BEING A REPLAT OF A PORTION OF "THE PALM BEACH FARMS
 COMPANY PLAT NO. 1" (P.B. 2, PGS. 26-28)
 PALM BEACH COUNTY, FLORIDA

0230-023