

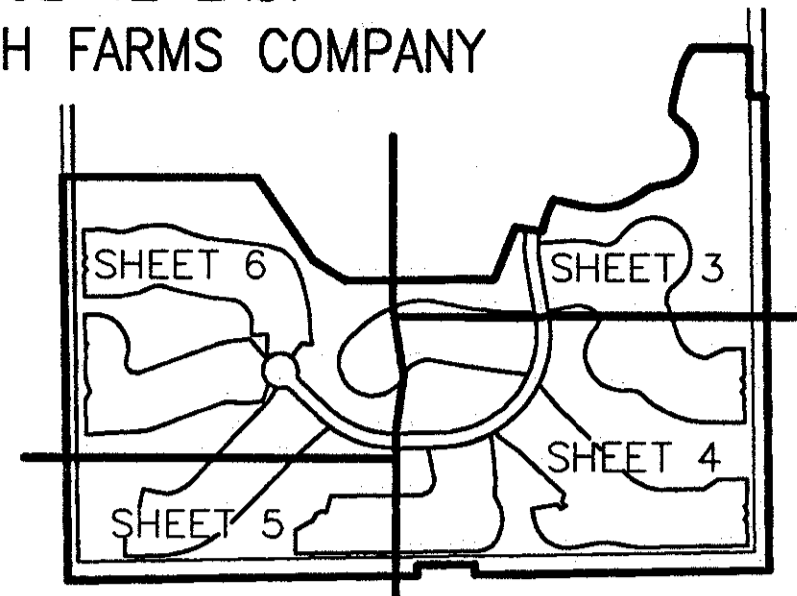
ADDISON RESERVE PLAT FOUR

0230-023

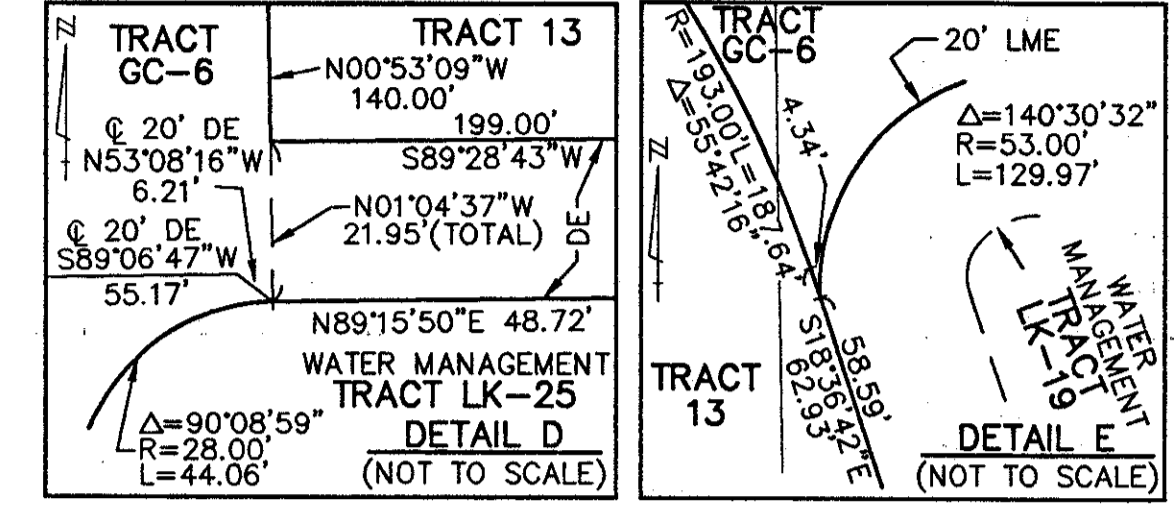
81

PART OF GLENEAGLES/POLO CLUB WEST P.U.D.
SITUATE IN SECTION 28, TOWNSHIP 46 SOUTH, RANGE 42 EAST
AND BEING A REPLAT OF A PORTION OF "THE PALM BEACH FARMS COMPANY
PLAT NO. 1" (P.B. 2, PGS. 26-28)
PALM BEACH COUNTY, FLORIDA
OCTOBER, 1996 SHEET 6 OF 6

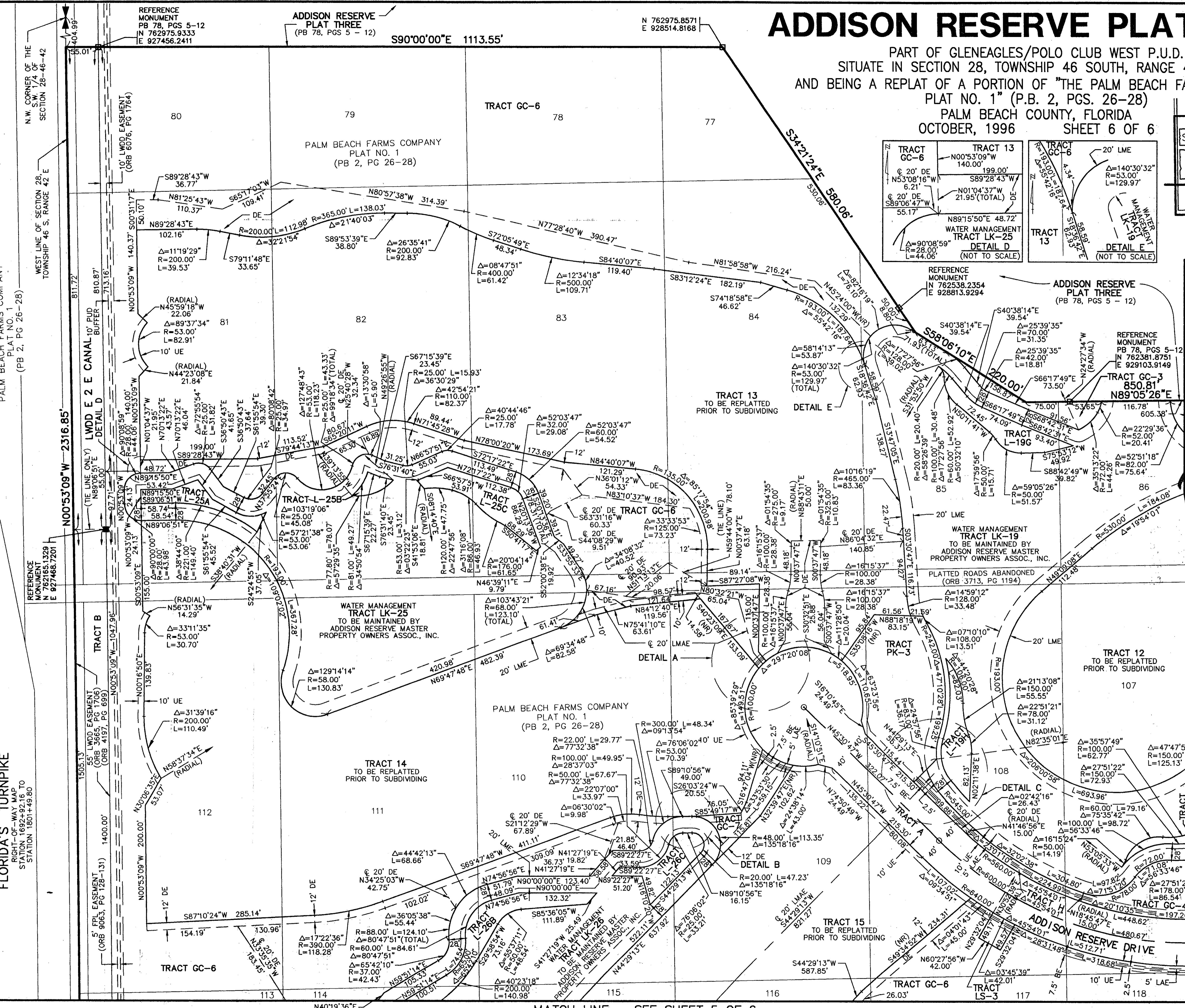
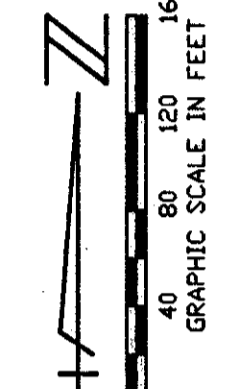
STATE OF FLORIDA
COUNTY OF PALM BEACH
THIS MAP WAS FILED FOR
RECORD
THIS _____ DAY OF _____
A.D. 1997 AND DULY RECORDED
IN PLAT BOOK _____ ON PAGE(S)
_____ AND _____
DOROTHY H. WILKEN, CLERK
BY: _____, D.C.
CIRCUIT COURT SEAL



SHEET LOCATION MAP
(NOT TO SCALE)



- LEGEND
- BE - BUFFER EASEMENT
 - DE - CENTRAL (DELTA) ANGLE
 - FE - DRAINAGE EASEMENT
 - FPL - FLORIDA POWER & LIGHT
 - L - ARC LENGTH
 - LAE - LIMITED ACCESS EASEMENT
 - LSE - LANDSCAPE EASEMENT
 - LMAE - LAKE MAINTENANCE ACCESS EASEMENT
 - LME - LAKE MAINTENANCE EASEMENT
 - LWD - LAKE WORTH DRAINAGE DISTRICT
 - NR - NON-RADIAL
 - ORB - OFFICIAL RECORD BOOK
 - PB - PLAT BOOK
 - PG(S) - PAGE(S)
 - R - RADIUS
 - UE - UTILITY EASEMENT
 - PERM - PERMANENT REFERENCE MONUMENT
 - PLSF# - PERMANENT REFERENCE MONUMENT SET PLS# 4763
 - PERM - PERMANENT REFERENCE MONUMENT SET PLS# 4763
 - PERM - PERMANENT CONTROL POINT SET PLS# 4763
 - CL - CENTERLINE



MATCH LINE - SEE SHEET 3 OF 6

MATCH LINE - SEE SHEET 4 OF 6

MATCH LINE - SEE SHEET 5 OF 6

MATCH LINE - SEE SHEET 6 OF 6

MATCH LINE - SEE SHEET 7 OF 6

MATCH LINE - SEE SHEET 8 OF 6

MATCH LINE - SEE SHEET 9 OF 6

Pet. 80-215

79/81

REV. 01-29-97

CAD FILE: TWKCAD1\ADDRP25

FLORIDA'S TURNPIKE
RIGHT-OF-WAY MAP
STATION 1692+92.16 TO
STATION 1801+49.80

5' FPL EASEMENT
(ORB 9063, PG 128-131)

10' LWD EASEMENT
(ORB 6076, PG 1764)

10' LWD EASEMENT
(ORB 6076, PG 1764)

10' LWD EASEMENT
(ORB 6076, PG 1764)

10' LWD EASEMENT
(ORB 6076, PG 1764)

10' LWD EASEMENT
(ORB 6076, PG 1764)

BOOK 77 PAGE 53
FLOOD ZONE
ZONING
ZIP CODE
SUB NAME

MATCH LINE - SEE SHEET 5 OF 6

0230-023

SCALE: 1"=80'
P.A. NO.: 94182.27
DATE: OCTOBER 1996
DRAWING NO.: 46-42-28-115

MOCK ROOS
ENGINEERS SURVEYORS PLANNERS
720 Corporate Way, West Palm Beach, Florida 33407
(407) 683-3113, fax 478-7248

ADDISON RESERVE
PLAT FOUR
PART OF GLENEAGLES/POLO CLUB WEST P.U.D.
SITUATE IN SECTION 28, TOWNSHIP 46 SOUTH, RANGE 42 EAST
AND BEING A REPLAT OF A PORTION OF "THE PALM BEACH FARMS
COMPANY PLAT NO. 1" (P.B. 2, PGS. 26-28)
PALM BEACH COUNTY, FLORIDA

THIS INSTRUMENT WAS PREPARED BY MARY HANNA CLODFELTER, P.S.M. IN
THE OFFICES OF MOCK, ROOS & ASSOCIATES, INC., 5720 CORPORATE WAY,
WEST PALM BEACH, FLORIDA 33407.