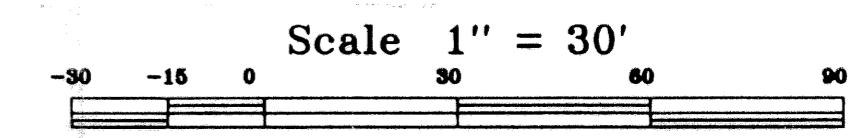


# TEQUESTA OAKS

LYING IN SECTION 30, TOWNSHIP 40 SOUTH, RANGE 43 EAST,  
VILLAGE OF TEQUESTA, PALM BEACH COUNTY, FLORIDA.  
FEBRUARY 1997  
SHEET 3 OF 5

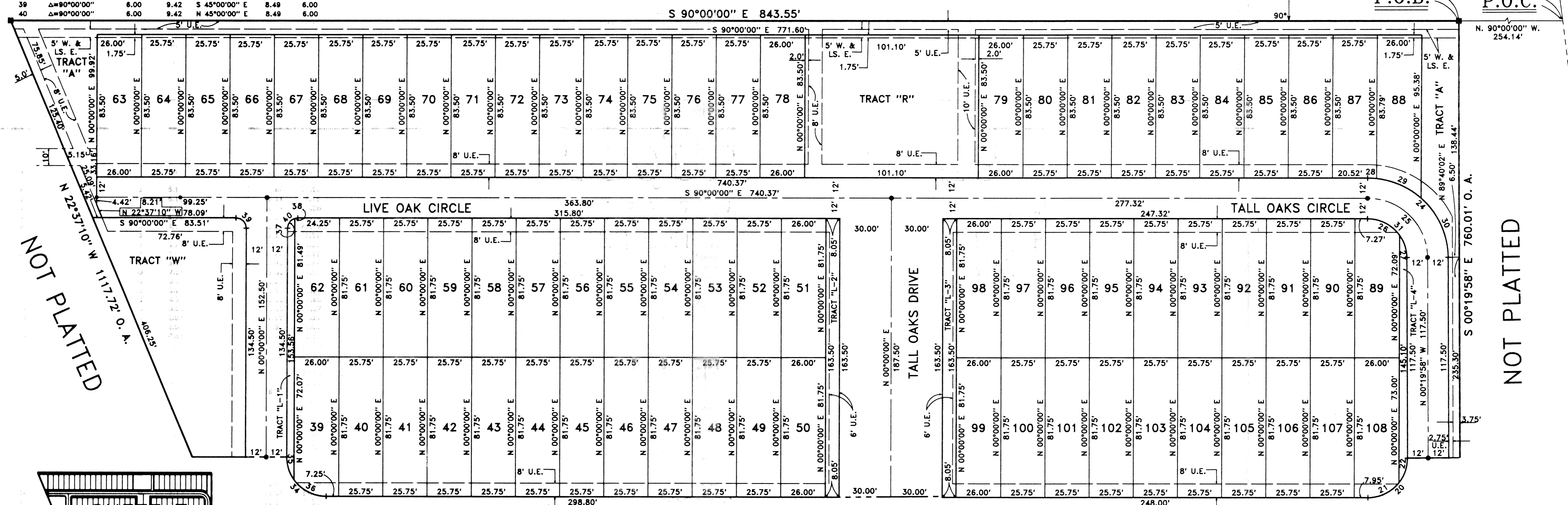
STATE OF FLORIDA  
COUNTY OF PALM BEACH ss  
This Plat was filed for record at \_\_\_\_\_  
M. This day of \_\_\_\_\_, 19\_\_\_\_  
and duly recorded in Plat Book No. \_\_\_\_\_  
on Page \_\_\_\_\_  
Dorothy H. Wilken, Clerk of the Circuit Court  
By \_\_\_\_\_ D.C.

Name	Delta	Radius	Length	Bearing	Chord	Tangent
1	Δ=90°19'58"	35.00	55.18	N 44°50'01" E	49.64	35.20
2	Δ=19°44'14"	47.00	16.19	N 80°07'53" E	16.11	8.18
3	Δ=70°35'44"	47.00	57.91	N 34°57'54" E	54.32	33.28
4	Δ=90°19'58"	23.00	36.26	N 44°50'01" E	32.62	23.13
5	Δ=90°19'58"	47.00	74.10	N 44°50'01" E	66.66	47.27
6	Δ=43°38'17"	23.00	17.52	N 68°10'52" E	17.10	9.21
7	Δ=46°41'41"	23.00	18.74	N 23°00'53" E	18.23	9.93
8	Δ=89°40'02"	47.00	73.55	S 45°09'59" E	66.27	46.73
9	Δ=48°02'08"	23.00	18.48	S 66°58'56" E	17.89	9.77
10	Δ=43°37'54"	23.00	17.51	S 22°08'55" E	17.09	9.21
11	Δ=20°37'25"	47.00	16.92	S 79°41'17" E	16.83	8.55
12	Δ=89°02'37"	47.00	56.64	S 34°51'16" E	53.27	32.33
13	Δ=89°40'02"	35.00	54.77	S 45°09'59" E	49.35	34.80
14	Δ=89°40'02"	23.00	35.99	S 45°09'59" E	32.43	22.87
15	Δ=90°00'00"	8.00	12.57	S 45°00'00" E	11.31	8.00
16	Δ=90°00'00"	8.00	12.57	N 45°00'00" E	11.31	8.00
17	Δ=22°35'05"	47.00	18.53	N 78°42'27" E	18.41	9.39
18	Δ=67°44'53"	47.00	55.57	N 33°32'28" E	52.39	31.55
19	Δ=90°19'58"	35.00	55.18	N 44°50'01" E	49.64	35.20
20	Δ=90°19'58"	23.00	36.26	N 44°50'01" E	32.62	23.13
21	Δ=51°42'07"	23.00	20.75	N 64°08'56" E	20.06	11.14
22	Δ=38°37'51"	23.00	15.51	N 18°58'57" E	15.22	8.06
23	Δ=90°19'58"	47.00	74.10	N 44°50'01" E	66.66	47.27
24	Δ=89°40'02"	47.00	73.55	S 45°09'59" E	66.27	46.73
25	Δ=89°40'02"	35.00	54.77	S 45°09'59" E	49.35	34.80
26	Δ=54°32'06"	23.00	21.89	S 62°43'57" E	21.07	11.85
27	Δ=35°07'56"	23.00	14.10	S 17°53'56" E	13.88	7.28
28	Δ=6°23'32"	47.00	5.24	S 86°48'14" E	5.24	2.62
29	Δ=35°15'14"	47.00	28.92	S 65°58'51" E	28.46	14.93
30	Δ=48°01'16"	47.00	39.39	S 24°20'36" E	38.25	20.94
31	Δ=89°40'02"	23.00	35.99	S 45°09'59" E	32.43	22.87
32	Δ=90°00'00"	47.00	73.83	S 45°00'00" E	66.47	47.00
33	Δ=90°00'00"	35.00	54.98	S 45°00'00" E	49.50	35.00
34	Δ=90°00'00"	23.00	36.13	S 45°00'00" E	32.53	23.00
35	Δ=35°23'28"	23.00	14.21	S 17°41'44" E	13.98	7.34
36	Δ=54°36'32"	23.00	21.92	S 62°41'44" E	21.10	11.87
37	Δ=73°02'32"	6.00	7.65	N 38°31'18" E	7.14	4.44
38	Δ=16°57'28"	6.00	1.78	N 81°31'18" E	1.77	0.89
39	Δ=90°00'00"	6.00	9.42	S 45°00'00" E	8.48	6.00
40	Δ=90°00'00"	6.00	9.42	N 45°00'00" E	8.48	6.00



NORTH LINE OF THE SOUTHWEST QUARTER OF SECTION 30, TOWNSHIP 40 SOUTH, RANGE 43 EAST.

NOT PLATTED

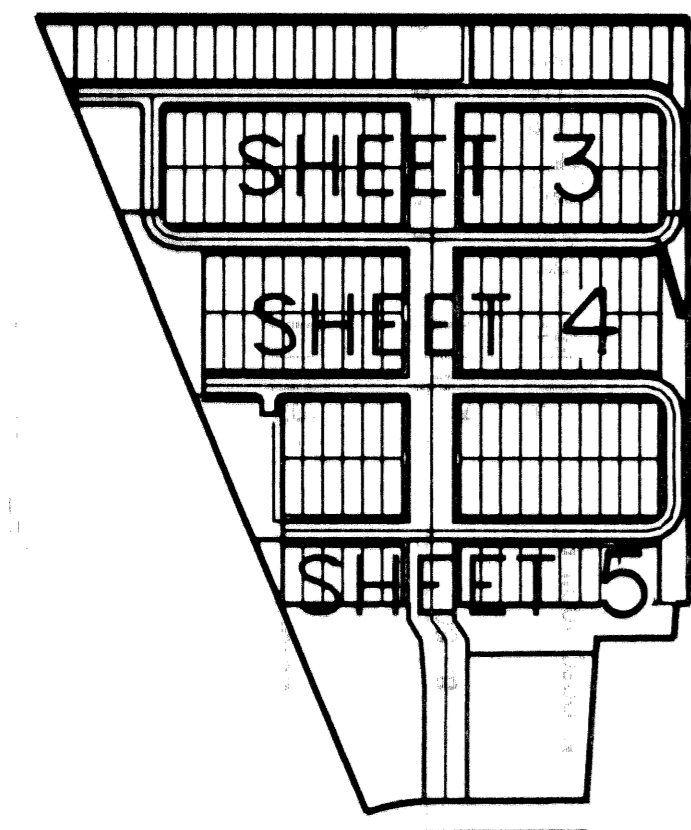


NOT PLATTED

NOT PLATTED

WESTERLY RIGHT-OF-WAY LINE OF STATE ROAD NO. 5 (U.S. NO. 1) (ROAD PLAT BOOK 2, PAGES 105 THRU 118)

SUBDIVISION TEQUESTA OAKS  
BOOK 79 PAGE 95  
FLOOD ZONE FLOOD MAP  
QUAD SE ZONING  
PUD NAME VILLAGE OF TEQUESTA

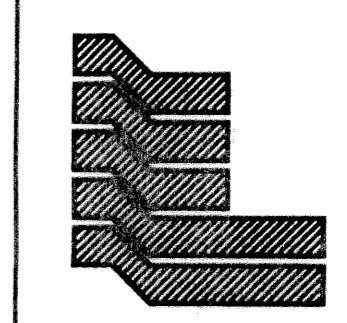


KEY MAP N.T.S.

LIVE OAK CIRCLE

MATCH TO SHEET 4

TALL OAKS CIRCLE



Landmark Surveying & Mapping Inc.  
LB NO. 4396  
1850 FOREST HILL BOULEVARD  
PH. (561)433-5405 SUITE 100 W.P.B. FLORIDA

TEQUESTA OAKS