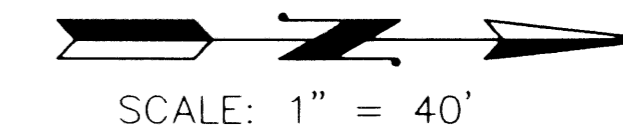
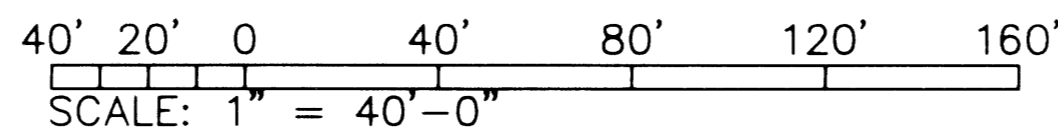


PLAT OF BENT TREE P.U.D. PHASE 2

IN PART OF SECTION 2, TOWNSHIP 42 SOUTH, RANGE 42 EAST
CITY OF PALM BEACH GARDENS, PALM BEACH COUNTY, FLORIDA

SHEET NO. 2 OF 3

GEE & JENSON
ENGINEERS - ARCHITECTS - PLANNERS, INC.
WEST PALM BEACH, FLORIDA
AUGUST 1996

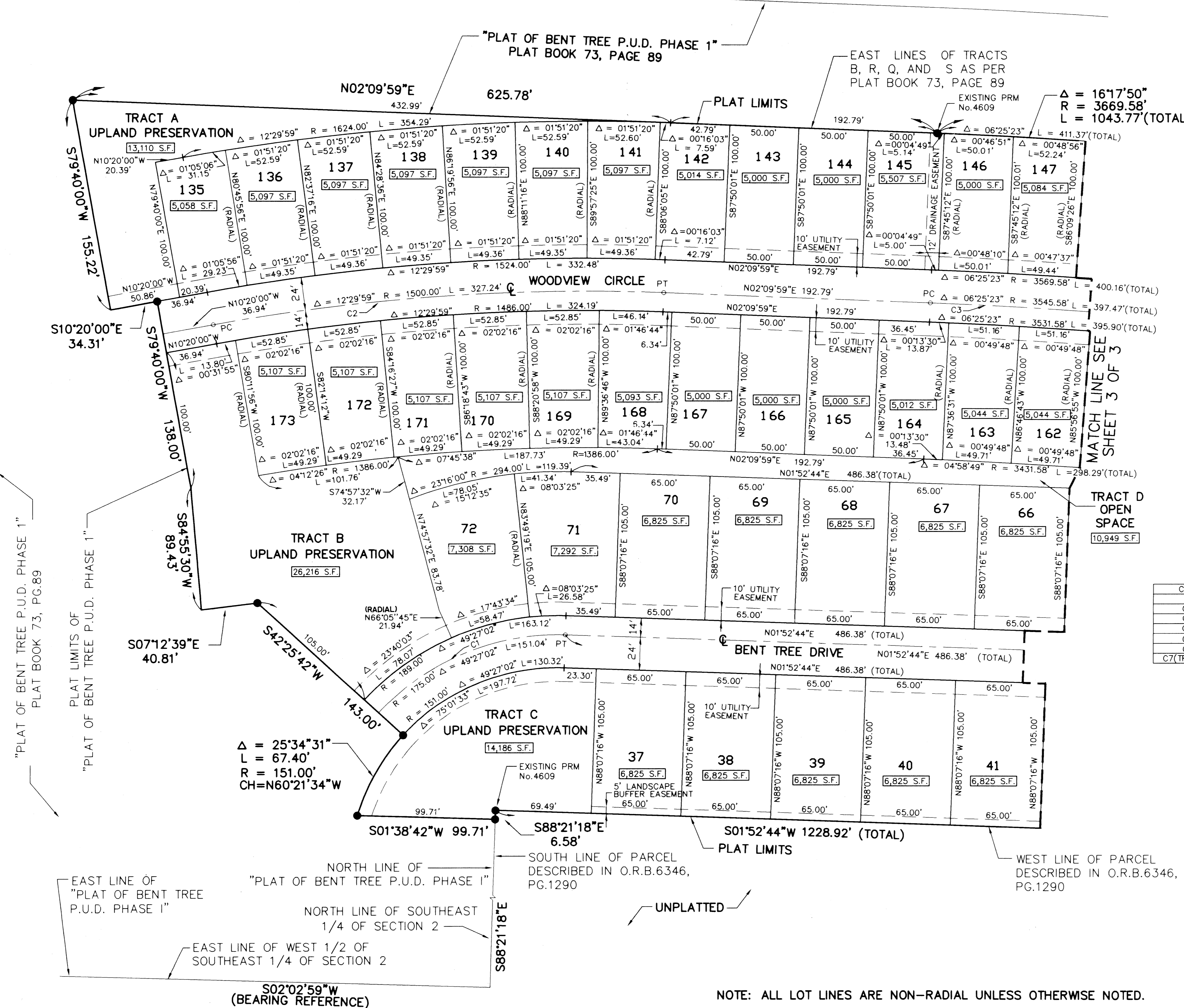
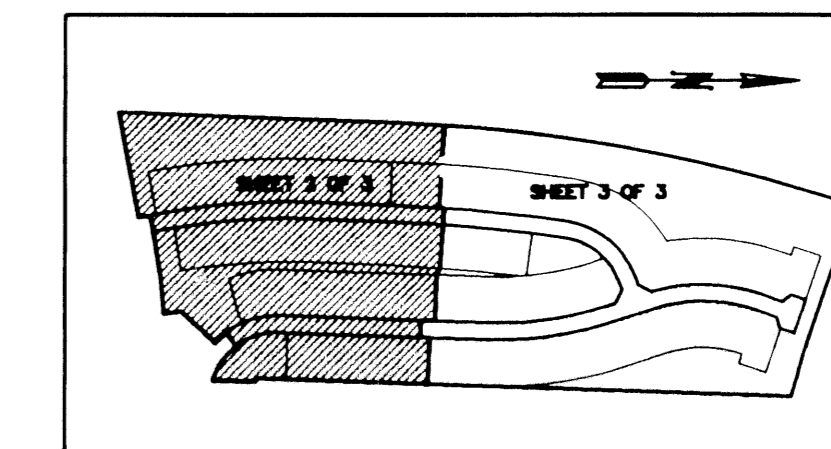


110

STATE OF FLORIDA
COUNTY OF PALM BEACH
This plat was filed for
record at _____ M. this _____ day
of _____ 1996, and duly
recorded in Plat Book No. _____
on Pages _____ thru _____.

DOROTHY H. WILKEN
Clerk Circuit Court

By _____ D.C.



CURVE	RADIUS	LENGTH	TANGENT	CHORD	BEARING	DELTA
C1	175.00'	151.04'	80.58'	146.39'	N22°50'47"W	49°27'02"
C2	1500.00'	327.24'	164.27'	326.59'	N04°05'01"W	12°29'59"
C3	3545.58'	397.47'	198.94'	397.26'	N05°22'40"E	06°25'23"
C4	175.00'	195.48'	109.35'	185.47'	N40°35'21"E	63°59'59"
C5	800.00'	269.33'	135.95'	268.06'	N07°45'58"W	19°17'23"
C6	400.00'	254.82'	131.90'	250.53'	N00°50'21"E	36°30'00"
C7 (TRACT-D)	681.00'	66.07'	33.06'	66.05'	N00°54'02"E	05°33'32"

SUBDIVISION - BENT TREE PHASE 2
 BOOK 79 PAGE 110
 FLOOD MAP -
 QUAD -
 SE -
 PUD NAME - CITY OF PALM BEACH GARDENS

COMPUTED _____
 DRAWN _____
 CHECKED _____
 APPROVED _____
 JOB NO. 92-258.60