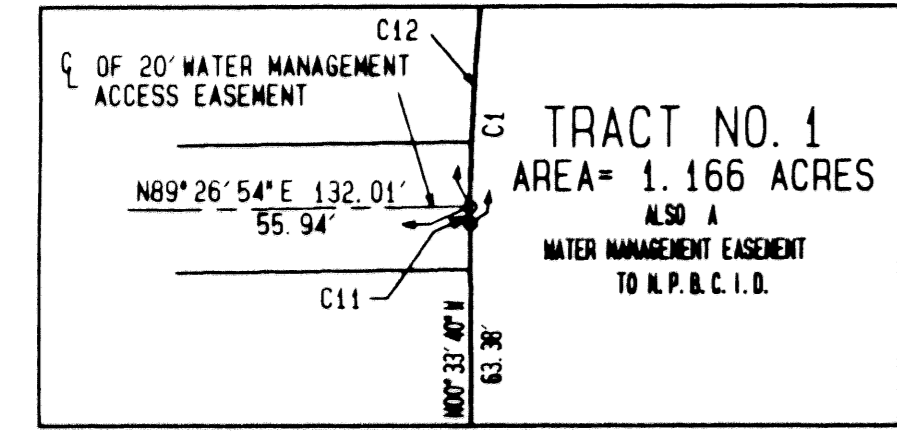


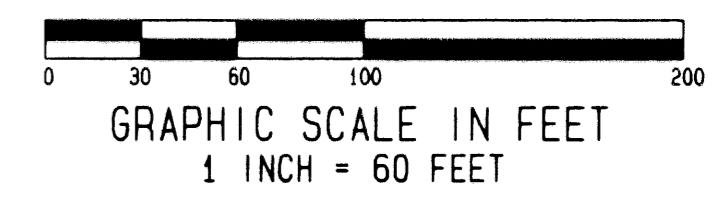
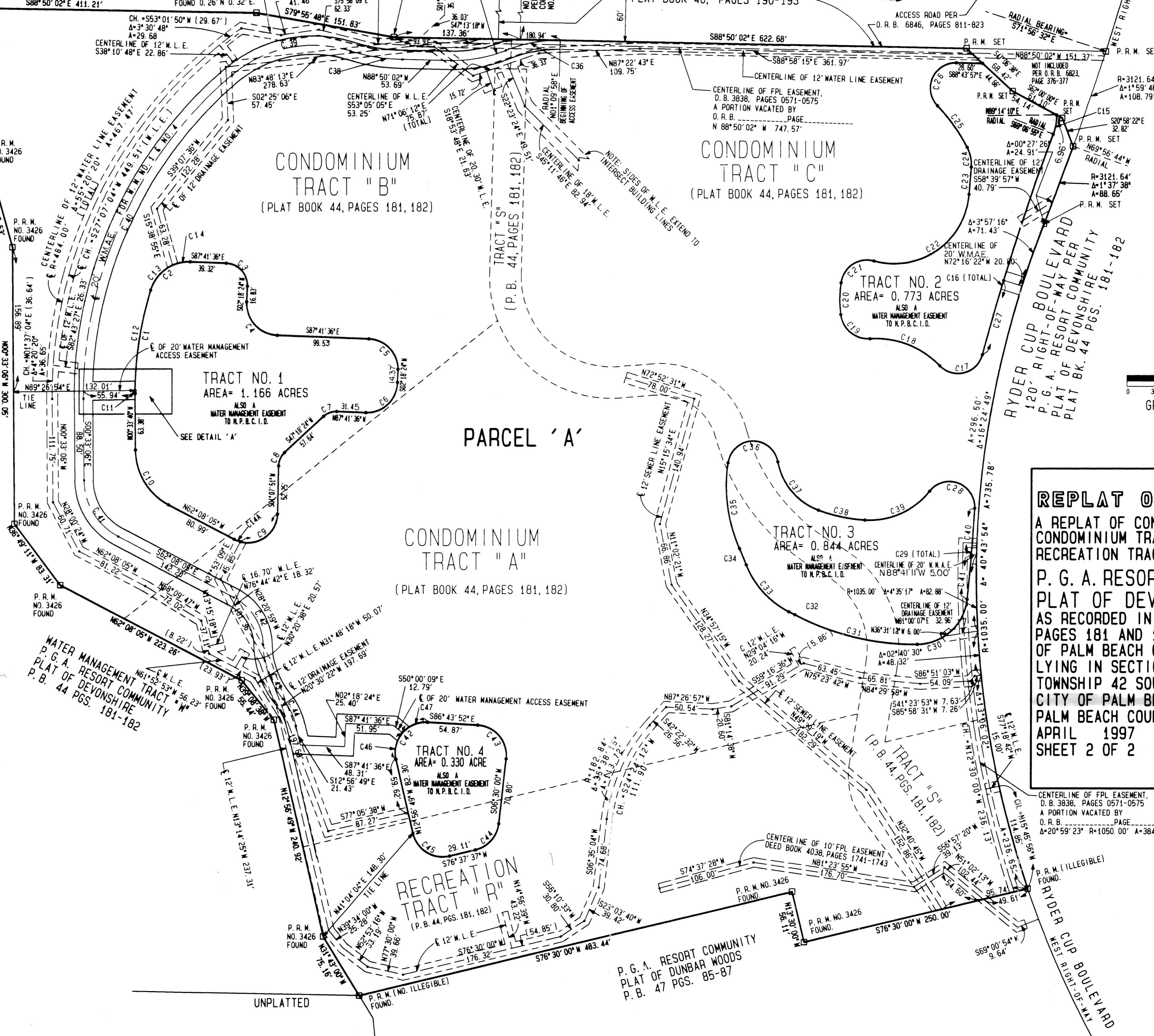
TRACT *C* PGA RESORT COMMUNITY PLAT No. 6 PLAT BOOK 47, PAGES 153-157

TRACT *C* PGA RESORT COMMUNITY PLAT No. 4 PLAT BOOK 40, PAGES 190-193



DETAIL 'A' SCALE 1" = 30'

Table with columns: Curve #, Radius, Delta, Length, Tangent, Chord/Bearing. Lists curves C1 through C47 for Tracts 1, 2, 3, and 4.



REPLAT OF DEVONSHIRE A REPLAT OF CONDOMINIUM TRACT 'A', CONDOMINIUM TRACT 'B', CONDOMINIUM TRACT 'C' RECREATION TRACT 'R' AND TRACT 'S' OF THE P. G. A. RESORT COMMUNITY PLAT OF DEVONSHIRE, AS RECORDED IN PLAT BOOK 44, PAGES 181 AND 182 OF THE PUBLIC RECORDS OF PALM BEACH COUNTY, FLORIDA. LYING IN SECTION 16, TOWNSHIP 42 SOUTH, RANGE 42 EAST, CITY OF PALM BEACH GARDENS, PALM BEACH COUNTY, FLORIDA. APRIL 1997 SHEET 2 OF 2

SURVEYOR'S NOTES: 1. BEARINGS SHOWN HEREON ARE BASED ON A BEARING OF S88°50'02"E ALONG THE SOUTH BOUNDARY OF P. G. A. RESORT COMMUNITY PLAT NO. 4...

LEGEND: R = RADIUS, A = ARC LENGTH, CH = CHORD BEARING AND DISTANCE, O. R. B. = OFFICIAL RECORD BOOK, P. R. M. = PERMANENT REFERENCE MONUMENT, W. M. = WATER MANAGEMENT, W. L. E. = WATER LINE EASEMENT, S. L. E. = SEWER LINE EASEMENT, D. E. = DRAINAGE EASEMENT, N. P. B. C. I. D. = NORTHERN PALM BEACH COUNTY IMPROVEMENT DISTRICT, W. M. A. E. = WATER MANAGEMENT ACCESS EASEMENT

NOTICE: THERE MAY BE ADDITIONAL RESTRICTIONS THAT ARE NOT RECORDED ON THIS PLAT THAT MAY BE FOUND IN THE PUBLIC RECORDS OF PALM BEACH COUNTY.

THIS INSTRUMENT PREPARED BY: ROBERT P. BLASZYK, PROFESSIONAL SURVEYOR & MAPPER.

Mentel & Associates CONSULTING ENGINEERS AND LAND SURVEYORS 3950 RCA BOULEVARD, SUITE 5005, PALM BEACH GARDENS, FLORIDA 33410 TELEPHONE (407) 627-2226 TELEFAX 624-1569

PROJECT NO.: 96-022P DATE: JANUARY 1997 SCALE: 1"=60' SHEET 2 OF 2 FILE: 95021P1

SUBDIVISION: DEVONSHIRE BOOK: 79 PAGE: 115 FLOOD MAP: ZONING: QUAD: SE ZIP CODE: PUD NAME: CITY OF PALM BEACH GARDENS