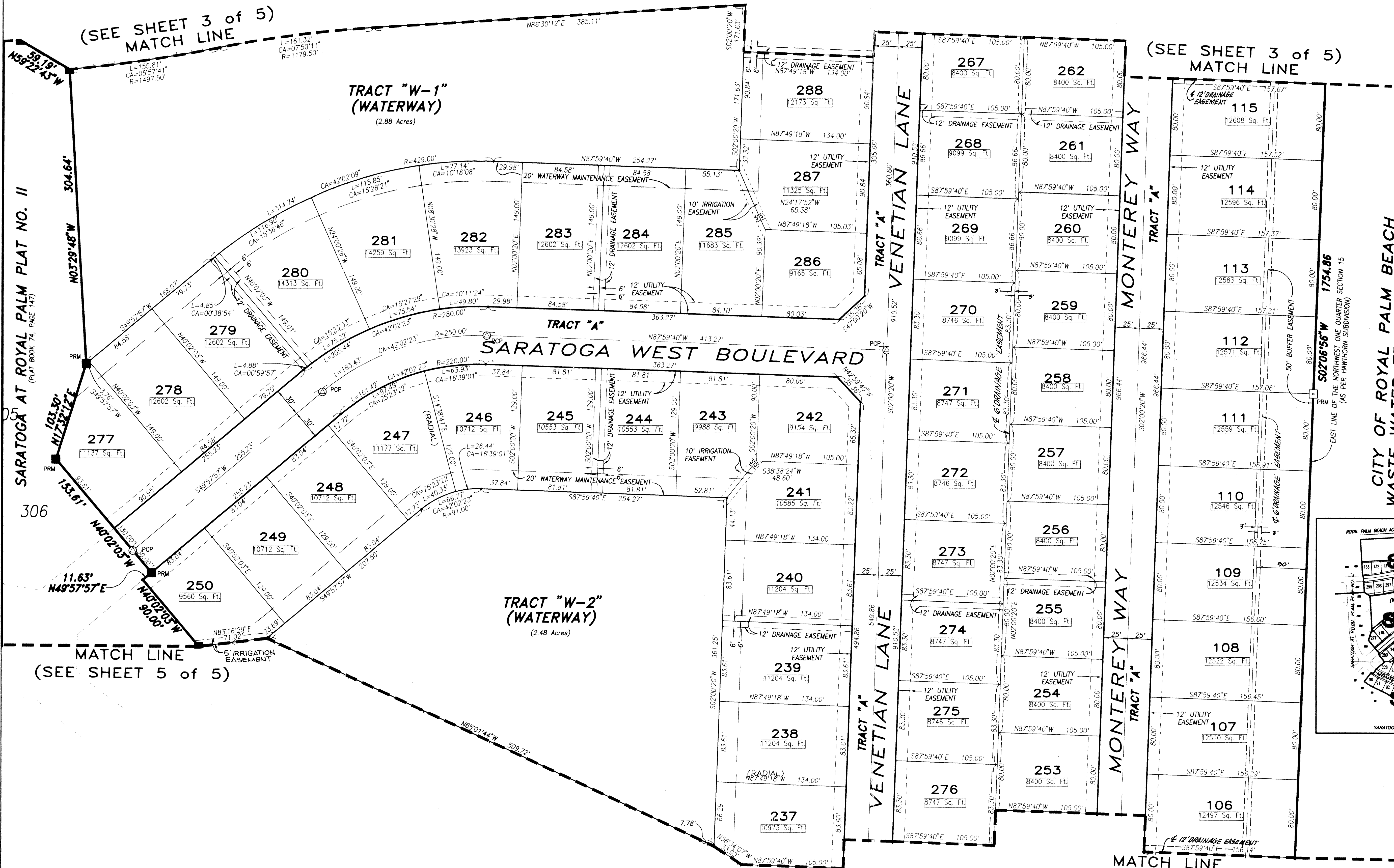


# SARATOGA AT ROYAL PALM PLAT IV

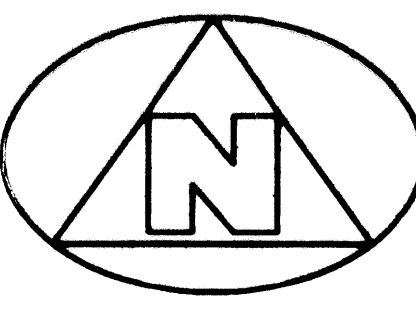
(A PART OF ROYAL PALM HOMES P.U.D.)  
LYING AND BEING IN SECTION 15, TOWNSHIP 43 SOUTH, RANGE 41 EAST, VILLAGE OF ROYAL PALM BEACH, PALM BEACH COUNTY, FLORIDA,  
BEING A RE-PLAT OF A PORTION OF HAWTHORNE SUBDIVISION, AS RECORDED IN PLAT BOOK 30, PAGE 104, PUBLIC RECORDS, PALM BEACH COUNTY, FLORIDA



SARATOGA AT ROYAL PALM PLAT NO. II  
(PLAT BOOK 74, PAGE 147)

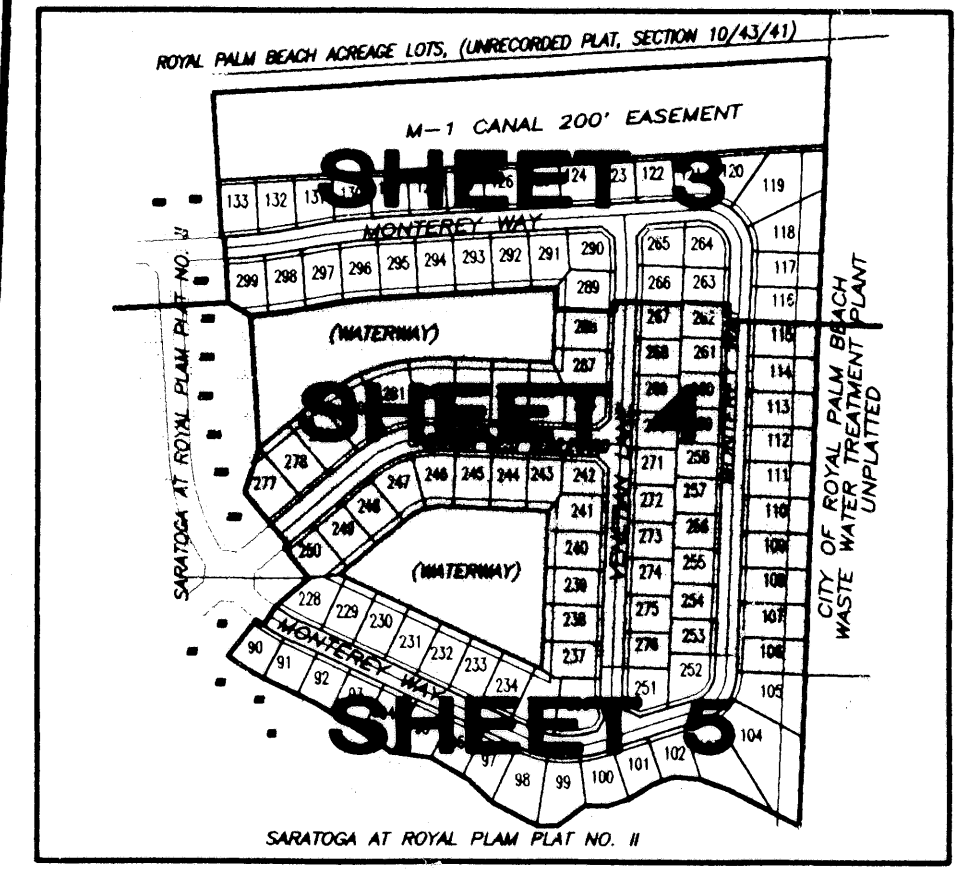
(SEE SHEET 3 of 5)  
MATCH LINE

MATCH LINE  
(SEE SHEET 5 of 5)



0 25' 50' 100'  
GRAPHIC SCALE  
(IN FEET)

CITY OF ROYAL PALM BEACH  
WASTE WATER TREATMENT PLANT  
UNPLATTED



SUBDIVISION **SARATOGA AT ROYAL PALM PLAT NO. II**  
 BOOK **79** PLAT **119**  
 FLOOD MAP **NO**  
 ZONING **NO**  
 QUAD **NO**  
 SE **NO**  
 PUD NAME **VILLAGE OF ROYAL PALM BEACH**

### SURVEYOR'S NOTES AND LEGEND:

- BEARINGS SHOWN OR STATED HEREON, ARE BASED ON, OR ARE RELATIVE TO AN ASSUMED BEARING OF NORTH 02°06'56" EAST, ALONG THE EAST LINE OF THE N.W. 1/4, SECTION 15, (AS PER HAWTHORN SUBDIVISION)
- IN THOSE INSTANCES WHERE UTILITY/DRAINAGE STRUCTURES ARE CONSTRUCTED IN CONFLICT WITH THE PLATTED PERMANENT CONTROL POINTS (P.C.P.) POSITION, STRADDLERS MONUMENTED AS PERMANENT CONTROL POINTS WILL BE SET TO REFERENCE THE PLATTED P.C.P. POSITION.
- LINE INTERSECTING CURVES ARE NON RADIAL UNLESS OTHERWISE NOTED.
- SQ. FT. DENOTES SQUARE FEET
- C/L DENOTES A CENTERLINE
- W.M.E. DENOTES WATERWAY MAINTENANCE EASEMENT
- PRM DENOTES A FOUND #2424 PERMANENT REFERENCE MONUMENT (P.R.M.)
- PCP DENOTES A FOUND #2424 PERMANENT CONTROL POINT (P.C.P.)
- PCP DENOTES A SET #2424 PERMANENT REFERENCE MONUMENT (P.R.M.)
- PCP DENOTES A SET #2424 PERMANENT CONTROL POINT (P.C.P.)

**BENCH MARK**  
 Land Surveying and Mapping, Inc.  
 4152 West Blue Heron Blvd, Suite 121, Riviera Beach, FL 33404  
 Fax (407) 844-9659 Phone (407) 848-2102

**RECORD PLAT**  
**SARATOGA AT ROYAL PALM PLAT IV**

THIS INSTRUMENT WAS PREPARED BY WM. R. VAN CAMPEN, R.L.S., IN AND FOR THE OFFICES OF BENCH MARK LAND SURVEYING & MAPPING, INC., 4152 WEST BLUE HERON BOULEVARD, SUITE 121, RIVIERA BEACH, FLORIDA

DWN	DJM	FB	DATE	06/01/96	WO.#	P15
CKD	FILE	P15-IV-A.dwg	SCALE	1" = 50'	SHEET	4 OF 5