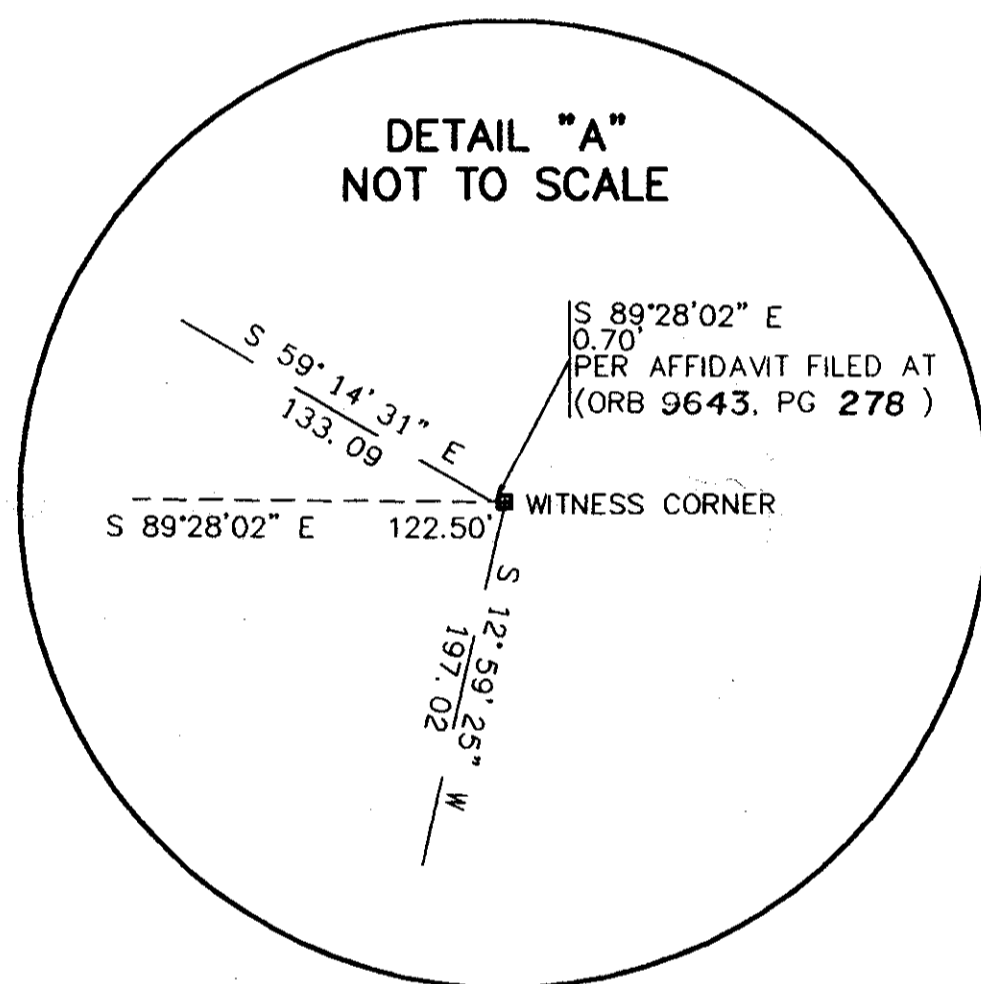
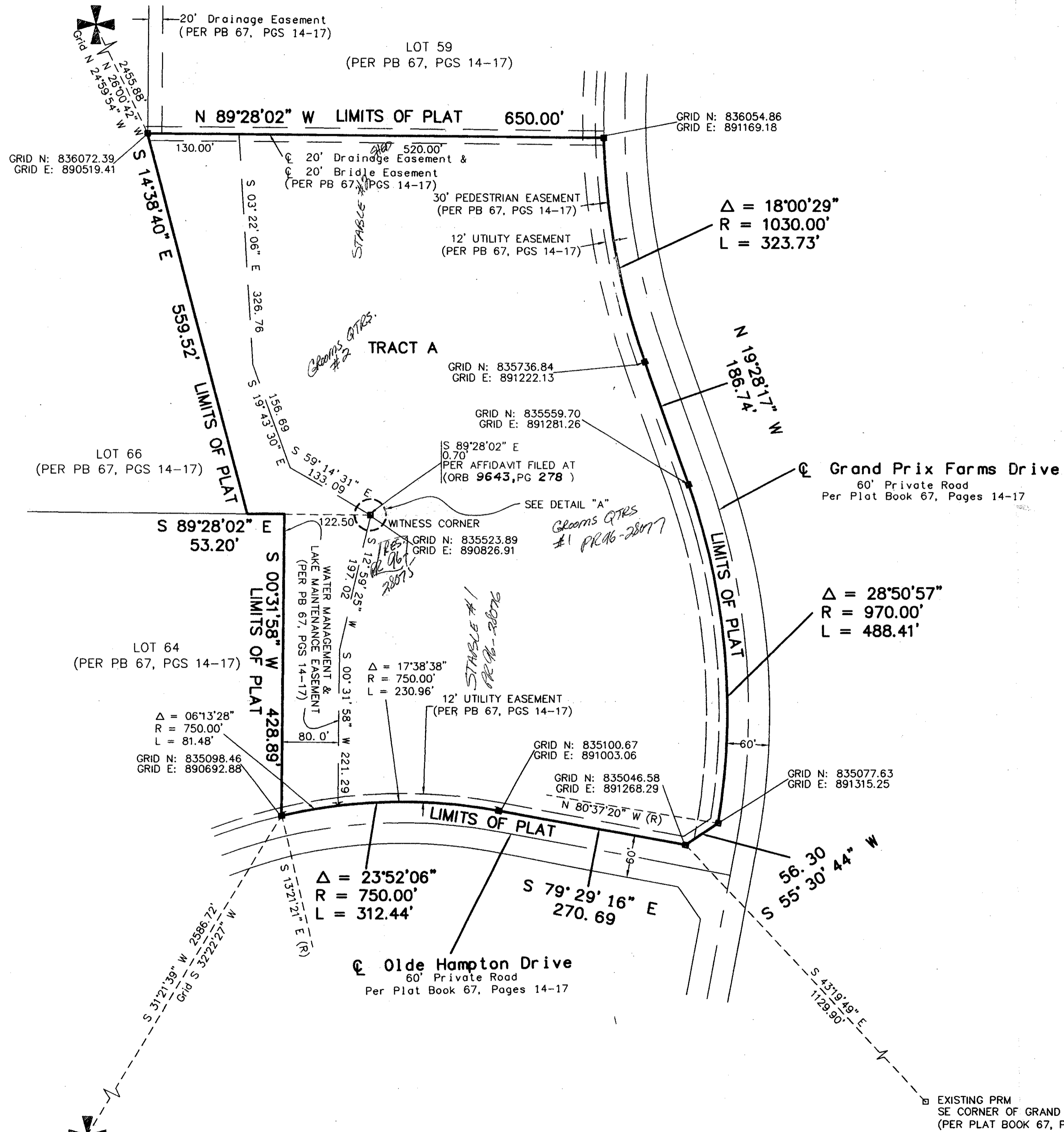


**GRAND PRIX FARMS, PLAT No. 1, P.R.D., REPLAT No. 2**  
**BEING A REPLAT OF LOTS 60 THROUGH 63, GRAND PRIX FARMS, PLAT No. 1, P.R.D.,**  
**AS RECORDED IN PLAT BOOK 67, PAGES 14 THROUGH 17 OF**  
**THE PUBLIC RECORDS OF PALM BEACH COUNTY, FLORIDA**  
**LYING IN THE WEST ONE HALF OF SECTION 20, TOWNSHIP 44 SOUTH, RANGE 41 EAST,**  
**VILLAGE OF WELLINGTON, FLORIDA**  
**SHEET 2 OF 2 SHEETS**  
**SEPTEMBER 1996**

PALM BEACH COUNTY  
 SURVEY DEPARTMENT  
 BRASS DISK IN CONCRETE  
 NW CORNER OF SECTION 20,  
 TOWNSHIP 44 S. RANGE 41 E  
 GRID N: 838298.22  
 GRID E: 889481.58



*Pct. 89-124A*  
*5/2/4/G*

**VILLAGE OF WELLINGTON**  
 14000 GREENBRIAR BLVD.  
 WELLINGTON, FLORIDA 33414  
 (561) 791-4000

*CANTERBURY FARMS*  
*Commercial Stable*  
*Pg. 1*

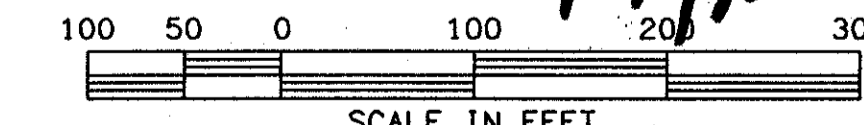
*79/126*

SUBDIVISION # Grand Prix Farms  
 BOOK 79 PAGE 17  
 FLOOD ZONE AO FLOOD MAP # 1112  
 QUAD # ZONING SE  
 SE 89-124 ZIP CODE  
 PUD NAME Village of Wellington

- LEGEND:**
- = PERMANENT REFERENCE MONUMENT "P. L. S. 4828" (UNLESS OTHERWISE NOTED)
  - R = RADIUS
  - L = ARC LENGTH
  - Δ = DELTA (CENTRAL ANGLE)
  - PB = PLAT BOOK
  - PGS = PAGES
  - PSM = PROFESSIONAL SURVEYOR & MAPPER
  - PLS = PROFESSIONAL LAND SURVEYOR
  - UE = UTILITY EASEMENT
  - DE = DRAINAGE EASEMENT
  - EXISTING PRM = FOUND PERMANENT REFERENCE MONUMENT "PRM 2297"
  - GRID N = GRID NORTHING
  - GRID E = GRID EASTING
  - (c) = CALCULATED
  - (R) = RADIAL

PALM BEACH COUNTY  
 SURVEY DEPARTMENT  
 BRASS DISK IN CONCRETE  
 SW CORNER OF SECTION 20,  
 TOWNSHIP 44 S. RANGE 41 E  
 GRID N: 832913.78  
 GRID E: 889307.83

*0591-003*



SCALE: 1" = 100'	<b>NICK MILLER, INC.</b> Surveying Planning & Development Consultants	DRAWN BY:
DATE: SEPT. 1996		CHK:
<b>GRAND PRIX FARMS, PLAT No. 1, P.R.D.</b> <b>REPLAT No. 2</b>		
2560 RCA Blvd. Suite 105 Palm Beach Gardens, Florida 33410 (561) 627-5200 D.B.P.R. Business License No. 4318		DRAWING NUMBER <b>960168</b>