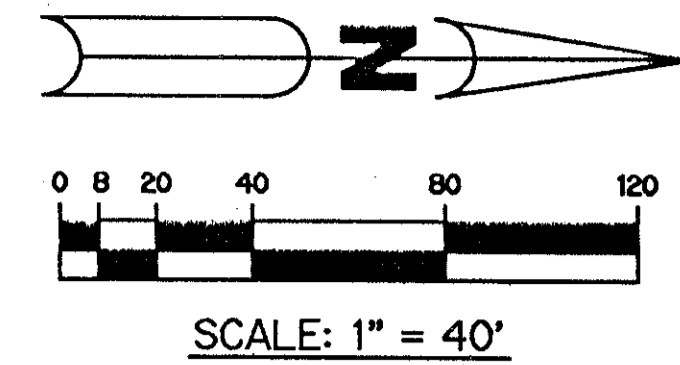


MISSION BAY CORPORATE PARK

5000-319

134

ALL OF MISSION BAY - TRACT "O" AS RECORDED IN PLAT BOOK 59, PAGES 196 AND 197, TOGETHER WITH A PORTION OF TRACT "P" OF MISSION BAY AS RECORDED IN PLAT BOOK 53, PAGES 112-120, ALL IN THE PUBLIC RECORDS OF PALM BEACH COUNTY, FLORIDA, AND LYING IN SECTION 13, TOWNSHIP 47 SOUTH, RANGE 41 EAST, PALM BEACH COUNTY, FLORIDA.

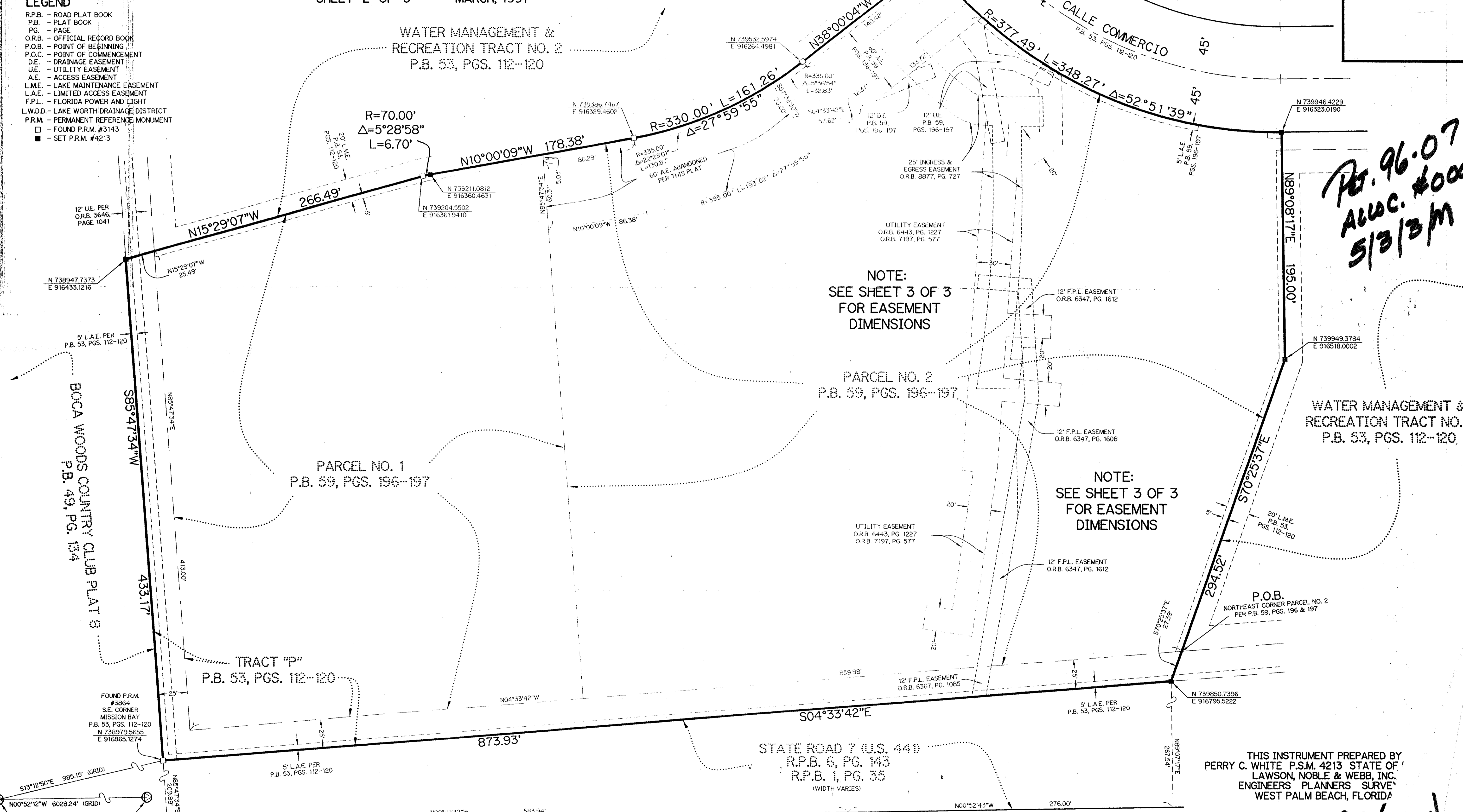


LEGEND

- R.P.B. - ROAD PLAT BOOK
- P.B. - PLAT BOOK
- PG. - PAGE
- O.R.B. - OFFICIAL RECORD BOOK
- P.O.B. - POINT OF BEGINNING
- P.O.C. - POINT OF COMMENCEMENT
- D.E. - DRAINAGE EASEMENT
- U.E. - UTILITY EASEMENT
- A.E. - ACCESS EASEMENT
- L.M.E. - LAKE MAINTENANCE EASEMENT
- L.A.E. - LIMITED ACCESS EASEMENT
- F.P.L. - FLORIDA POWER AND LIGHT
- L.W.D.D. - LAKE WORTH DRAINAGE DISTRICT
- P.R.M. - PERMANENT REFERENCE MONUMENT
- - FOUND P.R.M. #3143
- - SET P.R.M. #4213

SHEET 2 OF 3 MARCH, 1997

WATER MANAGEMENT & RECREATION TRACT NO. 2
P.B. 53, PGS. 112-120



*Per. 96.07
ALOC. #0001
5/3/3m*

NOTE:
SEE SHEET 3 OF 3
FOR EASEMENT
DIMENSIONS

PARCEL NO. 2
P.B. 59, PGS. 196-197

NOTE:
SEE SHEET 3 OF 3
FOR EASEMENT
DIMENSIONS

WATER MANAGEMENT & RECREATION TRACT NO. 1
P.B. 53, PGS. 112-120

P.O.B.
NORTHEAST CORNER PARCEL NO. 2
PER P.B. 59, PGS. 196 & 197

THIS INSTRUMENT PREPARED BY
PERRY C. WHITE P.S.M. 4213 STATE OF
LAWSON, NOBLE & WEBB, INC.
ENGINEERS' PLANNERS' SURVEY
WEST PALM BEACH, FLORIDA

FOUND BRASS DISK
SR 7-36
N 738020.5010
E 917090.3190

FOUND BRASS DISK
SR 7-37
N 744048.0480
E 916998.7940

MISSION BAY CORPORATE PARK
FESTIVAL SHOPPES OF BOCA RATON
P.B. 69, PGS. 172-174

5000-319

791

*MISSION BAY CORPORATE PARK
PAGE 134
FLOOD MAP #1008
ZONING RT3
MAP CODE 33498
79
79
79*