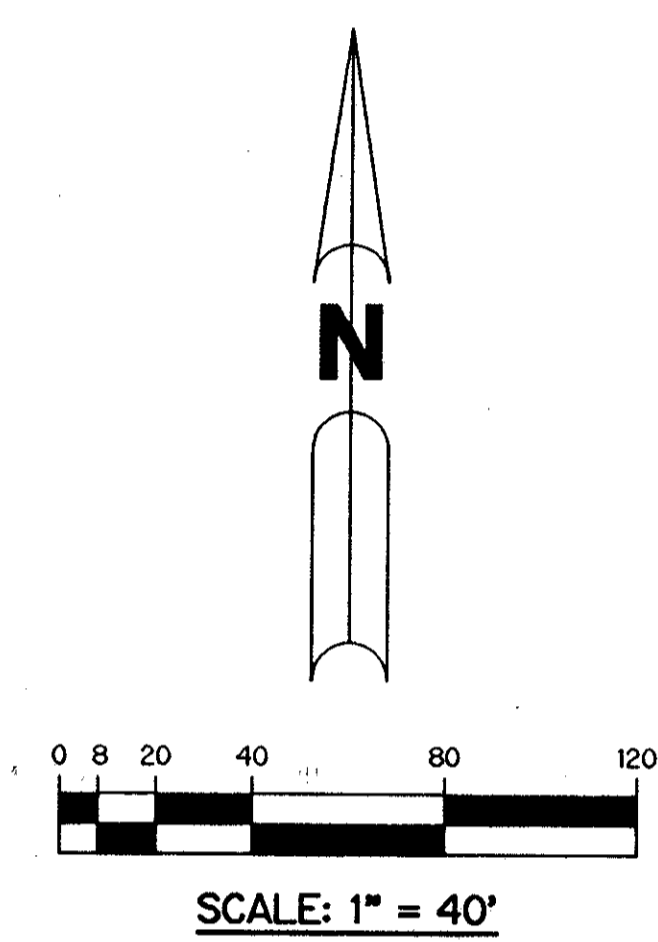


A PLANNED UNIT DEVELOPMENT VALENCIA LAKES - PARCEL 'C' REPLAT

BEING A REPLAT OF ALL OF PARCEL 'C' AS SHOWN ON THE PLAT OF VALENCIA LAKES - PLAT ONE AS RECORDED IN PLAT BOOK 78, PAGES 13 THROUGH 23, INCLUSIVE, OF THE PUBLIC RECORDS OF PALM BEACH COUNTY, FLORIDA, LYING IN SECTION 33, TOWNSHIP 45 SOUTH, RANGE 42 EAST.

SHEET 2 OF 2 FEBRUARY, 1997



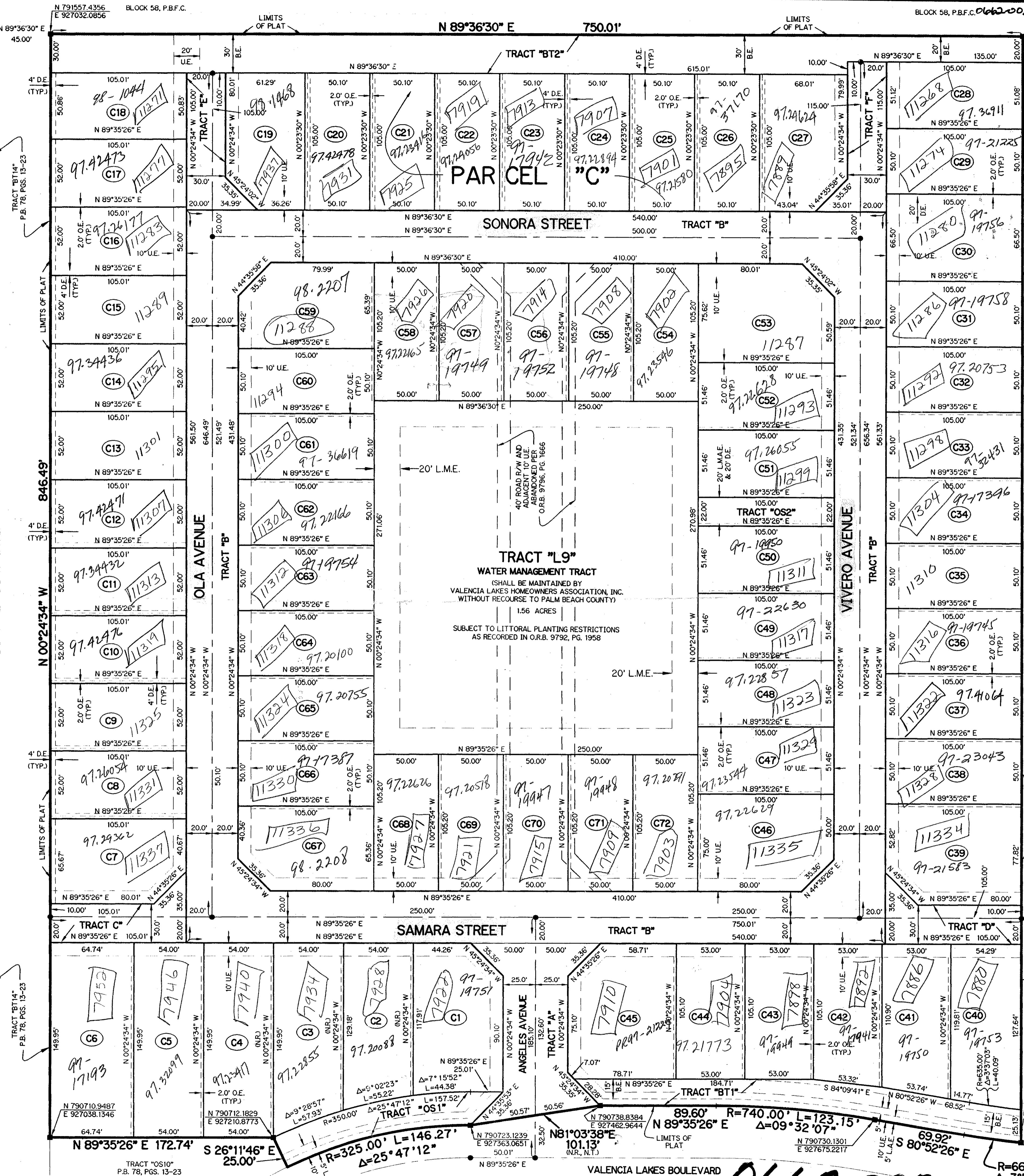
- LEGEND:**
- - PERMANENT REFERENCE MONUMENT, PSM #4213
 - - PERMANENT CONTROL POINT, PSM #4213
 - Δ - DELTA ANGLE
 - BE - BUFFER EASEMENT
 - C - CENTERLINE
 - DB - DEED BOOK
 - DE - DRAINAGE EASEMENT
 - L - ARC LENGTH
 - L.A.E. - LIMITED ACCESS EASEMENT
 - L.M.A.E. - LAKE MAINTENANCE ACCESS EASEMENT
 - L.M.E. - LAKE MAINTENANCE EASEMENT
 - L.W.D.D. - LAKE WORTH DRAINAGE DISTRICT
 - NR - NOT RADIAL
 - N.T. - NOT TANGENT
 - N.T.S. - NOT TO SCALE
 - O.E. - OVERHANG EASEMENT
 - OR.B. - OFFICIAL RECORD BOOK
 - P.B. - PLAT BOOK
 - P.B.F.C. - PALM BEACH FARMS COMPANY PLAT NO. 3 (P.B. 2, PGS. 45-54)
 - PGS. - PAGES
 - P.S.M. - PROFESSIONAL SURVEYOR AND MAPPER
 - R - RADIUS
 - R/W - RIGHT-OF-WAY
 - S.T. - SURVEY TIE
 - U.E. - UTILITY EASEMENT
 - N 737648.0171 E 905258.2326 - DENOTES STATE PLANE COORDINATES

NOTE:

COORDINATES SHOWN ARE GRID COORDINATES
ALL DISTANCES ARE GROUND UNLESS OTHERWISE NOTED
DATUM = NAD 83 (1990 ADJUSTMENT)
ZONE = FLORIDA EAST ZONE
LINEAR UNIT = U.S. SURVEY FEET
COORDINATE SYSTEM = 1983 STATE PLANE TRANSVERSE MERCATOR PROJECTION
SCALE FACTOR = 1.00002688
N 90° 00' 00" (PLAT BEARING) = N 90° 00' 00" (GRID BEARING)
NO BEARING ROTATION (PLAT = GRID)

THIS INSTRUMENT PREPARED BY
PERRY C. WHITE, P.S.M. 4213, STATE OF FLORIDA
LAWSON, NOBLE AND WEBB, INC.
ENGINEERS PLANNERS SURVEYORS
WEST PALM BEACH, FLORIDA

FOUND PRM #4213
SOUTHWEST CORNER
VALENCIA LAKES - PLAT ONE
P.B. 78, PGS. 13-23
N 790712.1829 E 927210.8773
N 79153.0790 E 927004.4076



159

PET. 95-40
ROADS \$1320
NO SCHOOLS - RESTR.
COVENANT CODE I
5/3/3/K

TRACT "L6"
P.B. 78, PGS. 13-23

TRACT "L6"
P.B. 78, PGS. 13-23

PET. 95-40A
WORTHINGTON TRAILS PUD
PARCEL C

79/159

0662-002