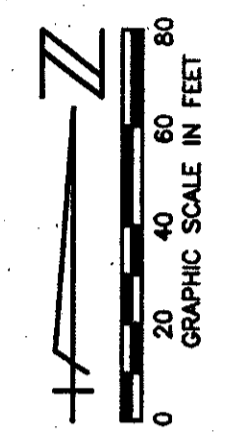


STATE OF FLORIDA
COUNTY OF PALM BEACH
THIS PLAT WAS FILED FOR
RECORD _____ DAY OF _____
AD, 1997 AND DULY RECORDED
IN PLAT BOOK _____ ON PAGES
_____ AND _____
DOROTHY H. WILKEN, CLERK
BY: _____, D.C.

CIRCUIT COURT SEAL



ADDITIONAL RESERVE PLAT THREE
(PB 78, PGS 5-12)

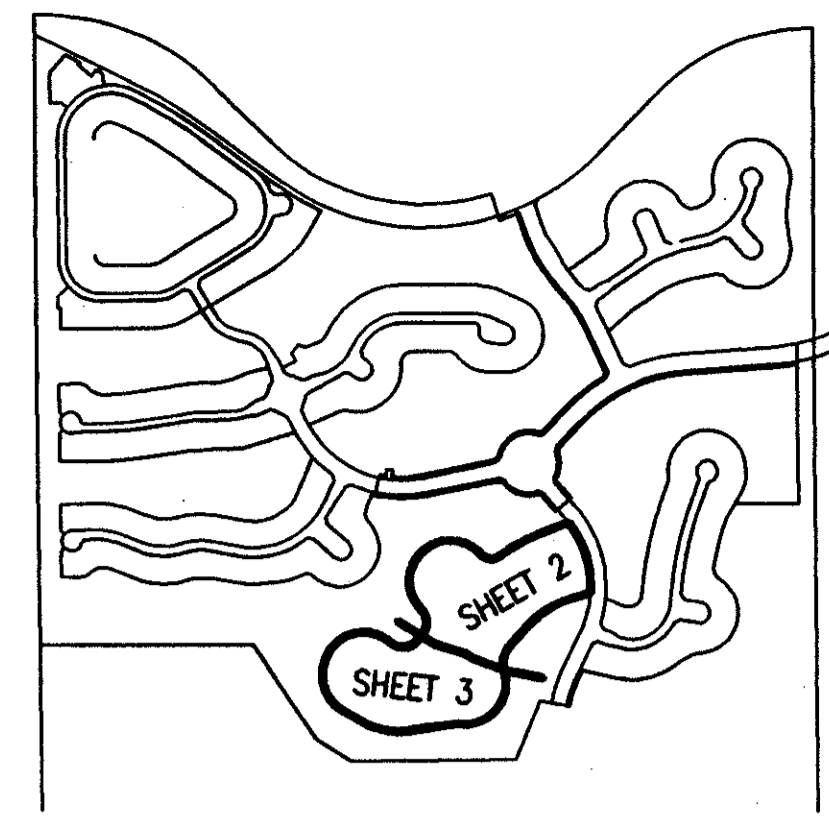
AKA ISLA VERDE

79/174

SHEET 2 OF 3

ADDISON RESERVE PARCEL ELEVEN

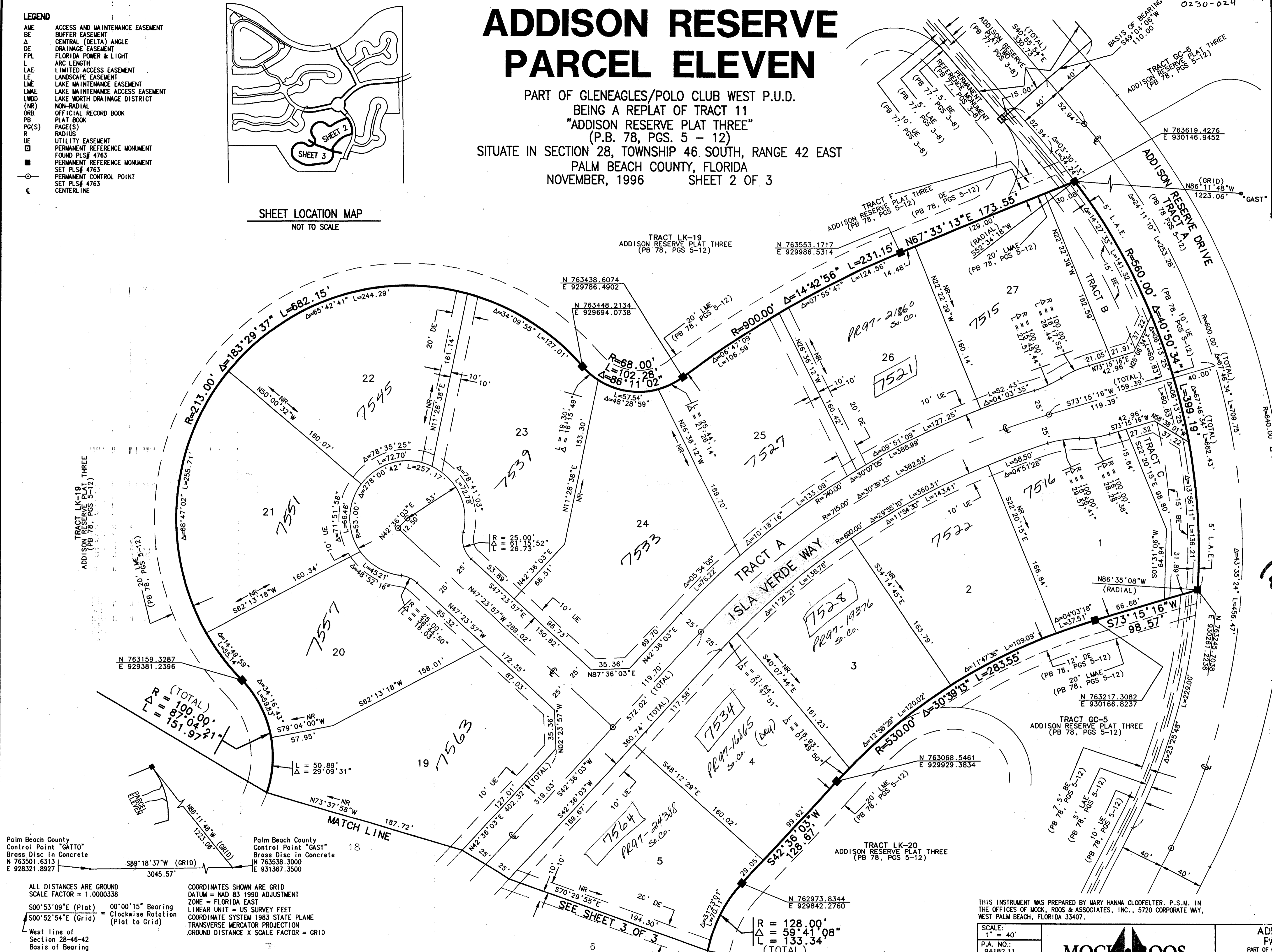
PART OF GLENEAGLES/POLO CLUB WEST P.U.D.
BEING A REPLAT OF TRACT 11
"ADDISON RESERVE PLAT THREE"
(P.B. 78, PGS. 5 - 12)
SITUATE IN SECTION 28, TOWNSHIP 46 SOUTH, RANGE 42 EAST
PALM BEACH COUNTY, FLORIDA
NOVEMBER, 1996 SHEET 2 OF 3



SHEET LOCATION MAP
NOT TO SCALE

- LEGEND**
- AME ACCESS AND MAINTENANCE EASEMENT
 - BE BUFFER EASEMENT
 - A CENTRAL (DELTA) ANGLE
 - DE DRAINAGE EASEMENT
 - FPL FLORIDA POWER & LIGHT
 - L ARC LENGTH
 - LAE LIMITED ACCESS EASEMENT
 - LE LANDSCAPE EASEMENT
 - LME LAKE MAINTENANCE EASEMENT
 - LMAE LAKE MAINTENANCE ACCESS EASEMENT
 - LWDD LAKE WORTH DRAINAGE DISTRICT
 - (NR) NON-RADIAL
 - ORB OFFICIAL RECORD BOOK
 - PB PLAT BOOK
 - PG(S) PAGE(S)
 - R RADIUS
 - UE UTILITY EASEMENT
 - PERM PERMANENT REFERENCE MONUMENT
 - FOUND PLS# 4763
 - PERM PERMANENT REFERENCE MONUMENT
 - SET PLS# 4763
 - PERM PERMANENT CONTROL POINT
 - SET PLS# 4763
 - CL CENTERLINE

ADDISON RESERVE PLAT THREE
SUBDIVISION PARCEL ELEVEN
BOOK 79 PAGE 174
FLOOD ZONE A15A FLOOD MAP # B
QUAD # 52 ZONING RTS
SE 80-215 ZIP CODE 33406
RD NAME PART OF GLENEAGLES
POLO CLUB WEST
P.U.D.



Palm Beach County
Control Point "GATTO"
Brass Disc in Concrete
N 763501.6313
E 928321.8927

Palm Beach County
Control Point "GAST"
Brass Disc in Concrete
N 763538.3000
E 931367.3500

ALL DISTANCES ARE GROUND
SCALE FACTOR = 1.0000338

COORDINATES SHOWN ARE GRID
DATUM = NAD 83 1990 ADJUSTMENT
ZONE = FLORIDA EAST
LINEAR UNIT = US SURVEY FEET
COORDINATE SYSTEM 1983 STATE PLANE
TRANSVERSE MERCATOR PROJECTION
GROUND DISTANCE X SCALE FACTOR = GRID

500°53'09"E (Plat) = 00°00'15" Bearing
500°52'54"E (Grid) = Clockwise Rotation
(Plat to Grid)

West line of
Section 28-46-42
Basis of Bearing

REV. 03-18-97
CAD FILE:
TWKADDI\ADDI\RP27

THIS INSTRUMENT WAS PREPARED BY MARY HANNA CLODFELTER, P.S.M. IN
THE OFFICES OF MOCK, ROOS & ASSOCIATES, INC., 5720 CORPORATE WAY,
WEST PALM BEACH, FLORIDA 33407.

SCALE:
1" = 40'
P.A. NO.:
94182.11
DATE:
NOVEMBER 1996
DRAWING NO.:
46-42-28-127

MOCK ROOS
ENGINEERS SURVEYORS PLANNERS
5720 Corporate Way, West Palm Beach, Florida 33407
(561) 683-3113, Fax 478-7246

ADDISON RESERVE
PARCEL ELEVEN
PART OF GLENEAGLES/POLO CLUB WEST P.U.D.
BEING A REPLAT OF TRACT 11
"ADDISON RESERVE PLAT THREE"
(P.B. 78, PGS. 5 - 12)
SITUATE IN SECTION 28, TOWNSHIP 46 SOUTH, RANGE 42 EAST
PALM BEACH COUNTY, FLORIDA

0230-024

PET. 80-2152
AVOC. #0001
5/3/3/K

R = 128.00'
Δ = 59°41'08"
L = 133.34'
(TOTAL)