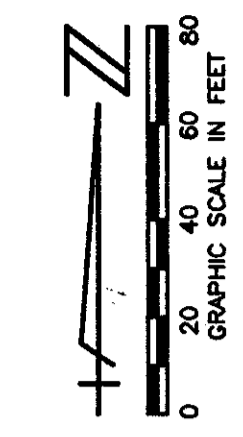
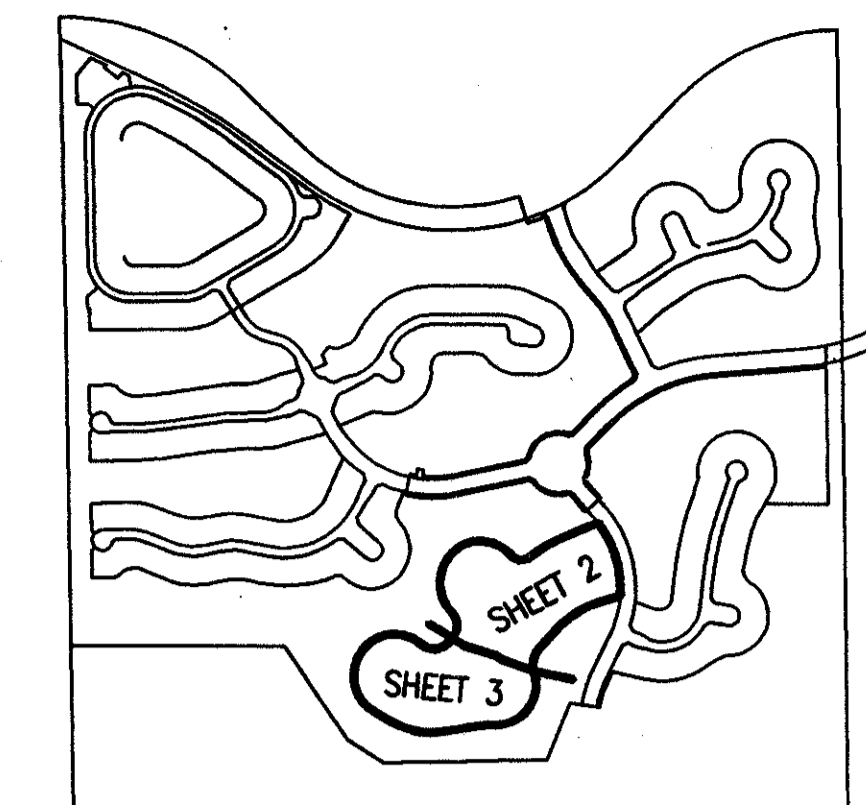


STATE OF FLORIDA
 COUNTY OF PALM BEACH
 THIS PLAT WAS FILED FOR
 RECORD _____ DAY OF _____
 AD. 1997 AND DULY RECORDED
 IN PLAT BOOK _____ ON PAGES
 _____ AND _____
 DOROTHY H. WILKEN, CLERK
 BY: _____, D.C.

CIRCUIT COURT SEAL

ADDISON RESERVE PARCEL ELEVEN

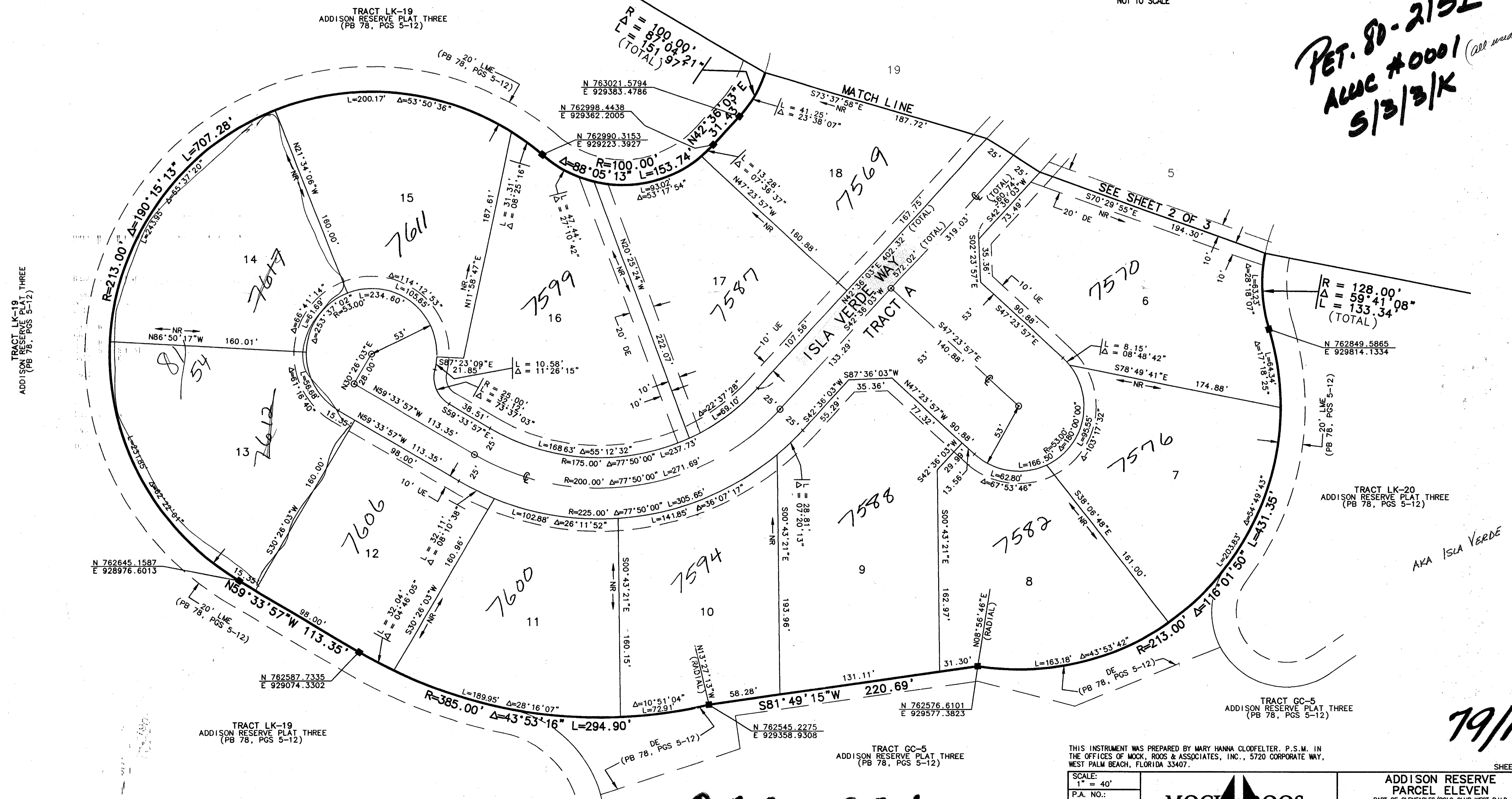
PART OF GLENEAGLES/POLO CLUB WEST P.U.D.
 BEING A REPLAT OF TRACT 11
 "ADDISON RESERVE PLAT THREE"
 (P.B. 78, PGS. 5 - 12)
 SITUATE IN SECTION 28, TOWNSHIP 46 SOUTH, RANGE 42 EAST
 PALM BEACH COUNTY, FLORIDA
 NOVEMBER, 1996 SHEET 3 OF 3



SHEET LOCATION MAP
NOT TO SCALE

*PET. 80-215I
 AWC #0001 (all used up)
 S/B/B/K*

- LEGEND**
- AME ACCESS AND MAINTENANCE EASEMENT
 - BE BUFFER EASEMENT
 - Δ CENTRAL (DELTA) ANGLE
 - DE DRAINAGE EASEMENT
 - FPL FLORIDA POWER & LIGHT
 - L ARC LENGTH
 - LAE LIMITED ACCESS EASEMENT
 - LE LANDSCAPE EASEMENT
 - LME LAKE MAINTENANCE EASEMENT
 - LMAE LAKE MAINTENANCE ACCESS EASEMENT
 - LWD LAKE WORTH DRAINAGE DISTRICT
 - (NR) NON-RADIAL
 - ORB OFFICIAL RECORD BOOK
 - PB PLAT BOOK
 - PG(S) PAGE(S)
 - R RADIUS
 - UE UTILITY EASEMENT
 - FOUND PLS# 4763
 - PERMANENT REFERENCE MONUMENT
 - SET PLS# 4763
 - PERMANENT CONTROL POINT
 - SET PLS# 4763
 - CENTERLINE



*SUBDIVISION # ADDISON RESERVE
 BOOK 79 PARCEL 175
 FLOOD ZONE A FLOOD MAP # 18
 MAP # 52 ZONING RTS
 TO 80-215 ZIP CODE 33444
 OLD NAME PART OF GLENEAGLES
 POLO CLUB WEST PUD*

79/175

0230-024

REV. 03-18-97
 CAD FILE:
 81WKCAD\ADDRP28

THIS INSTRUMENT WAS PREPARED BY MARY HANNA CLODFELTER, P.S.M. IN THE OFFICES OF MOCK, ROOS & ASSOCIATES, INC., 5720 CORPORATE WAY, WEST PALM BEACH, FLORIDA 33407.

SCALE:	1" = 40'
P.A. NO.:	94182.11
DATE:	NOVEMBER 1996
DRAWING NO.:	46-42-28-127

MOCK ROOS
 ENGINEERS SURVEYORS PLANNERS

7520 Corporate Way, West Palm Beach, Florida 33407
 (561) 683-3113, fax 478-7248

**ADDISON RESERVE
 PARCEL ELEVEN**
 PART OF GLENEAGLES/POLO CLUB WEST P.U.D.
 BEING A REPLAT OF TRACT 11
 "ADDISON RESERVE PLAT THREE"
 (P.B. 78, PGS. 5 - 12)
 SITUATE IN SECTION 28, TOWNSHIP 46 SOUTH, RANGE 42 EAST
 PALM BEACH COUNTY, FLORIDA