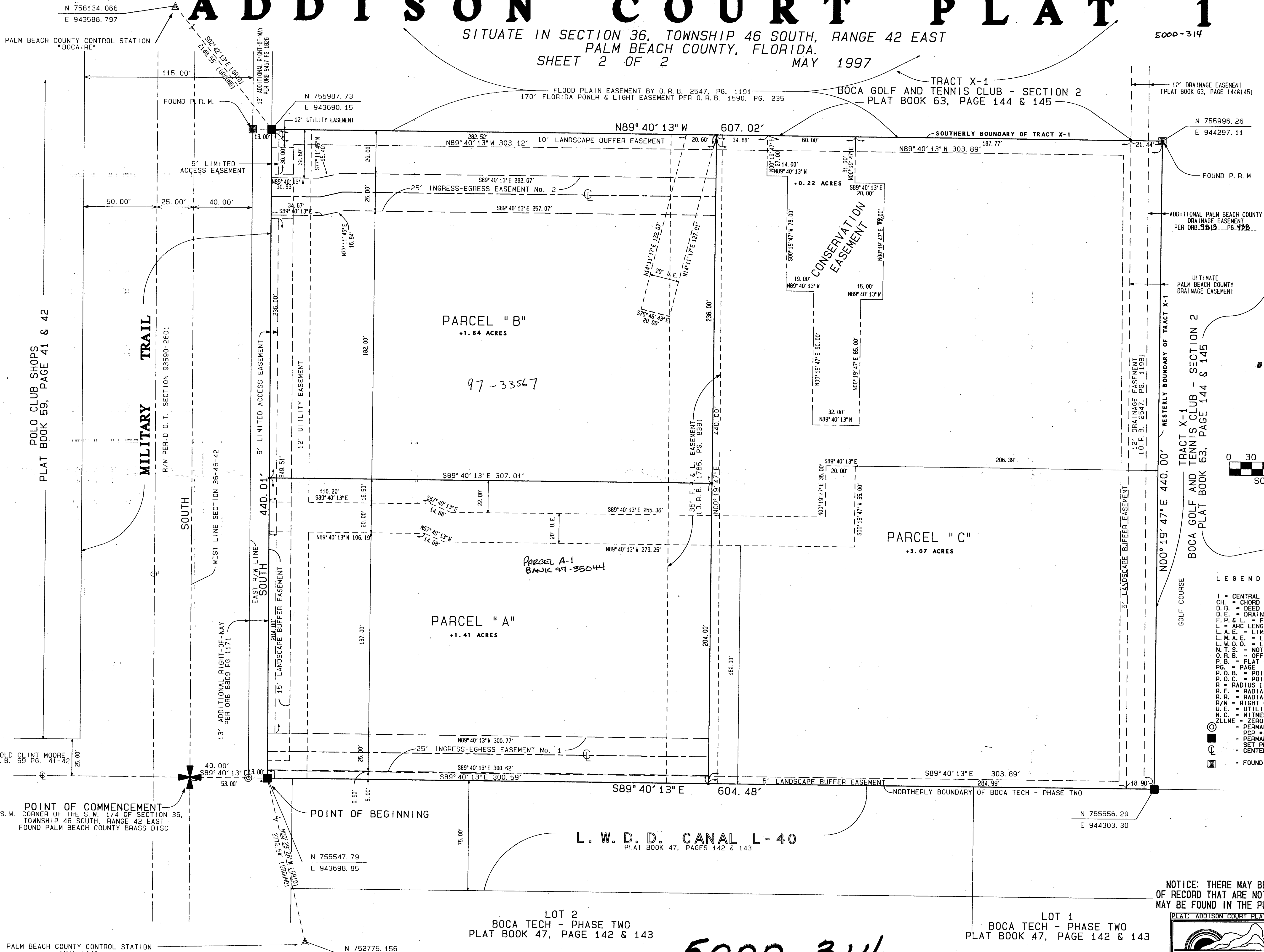


ADDISON COURT PLAT 1

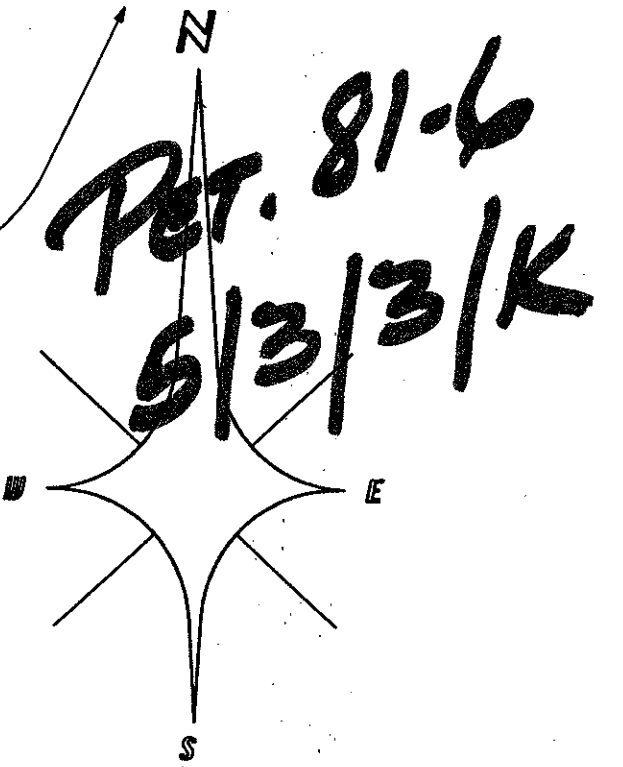
177

SITUATE IN SECTION 36, TOWNSHIP 46 SOUTH, RANGE 42 EAST
PALM BEACH COUNTY, FLORIDA.
SHEET 2 OF 2 MAY 1997

5000-314



STATE OF FLORIDA
COUNTY OF PALM BEACH } SS
THIS PLAT WAS FILED FOR
RECORD AT _____ DAY OF
THIS _____ AD, 1997 AND
DULY RECORDED IN PLAT BOOK
ON PAGES _____ AND
DOROTHY H. WILKEN, CLERK
CIRCUIT COURT
BY: _____ DC



- LEGEND:**
- I = CENTRAL ANGLE/Delta
 - CH = CHORD
 - D.B. = DEED BOOK
 - D.E. = DRAINAGE EASEMENT
 - F.P. & L. = FLORIDA POWER AND LIGHT COMPANY
 - L = ARC LENGTH
 - L.A.E. = LIMITED ACCESS EASEMENT
 - L.M.A.E. = LAKE MAINTENANCE ACCESS EASEMENT
 - L.W.D.D. = LAKE WORTH DRAINAGE DISTRICT
 - N.T.S. = NOT TO SCALE
 - O.R.B. = OFFICIAL RECORDS BOOK
 - P.B. = PLAT BOOK
 - P.C. = PAGE
 - P.O.B. = POINT OF BEGINNING
 - P.O.C. = POINT OF COMMENCEMENT
 - R = RADIUS (RADI)
 - R.F. = RADIAL TO FRONT LOT LINE
 - R.R. = RADIAL TO REAR LOT LINE
 - R/W = RIGHT OF WAY
 - U.E. = UTILITY EASEMENT
 - W.C. = WITNESS CORNER
 - ZLLME = ZERO LOT LINE MAINTENANCE EASEMENT
 - PCP #4380 = PERMANENT CONTROL POINT (PCP)
 - PRM #4380 = PERMANENT REFERENCE MONUMENT (PRM)
 - SET PRM #4380 = SET PRM
 - CL = CENTERLINE
 - FOUND PRM LS# 1580

SUBDIVISION * Addison Court
BOOK 79 PAGE 177
FLOOD ZONE 2208 FLOOD MAP # B
QUAD # 57 ZONING RS
SE 81-6
PUD NAME Addison Court

NOTICE: THERE MAY BE ADDITIONAL RESTRICTIONS
OF RECORD THAT ARE NOT RECORDED ON THIS PLAT THAT
MAY BE FOUND IN THE PUBLIC RECORDS OF THIS COUNTY

PLAT: ADDISON COURT PLAT 1 (PROJ. #: 94-131) SHEET 2 OF 2

ATLANTIC - CARIBBEAN MAPPING, INC.
PROFESSIONAL SURVEYORS AND MAPPERS
3062 JOG ROAD GREENACRES, FLORIDA 33467
(561) 964-7884 - FAX (561) 964-1969

5000.314

79/177