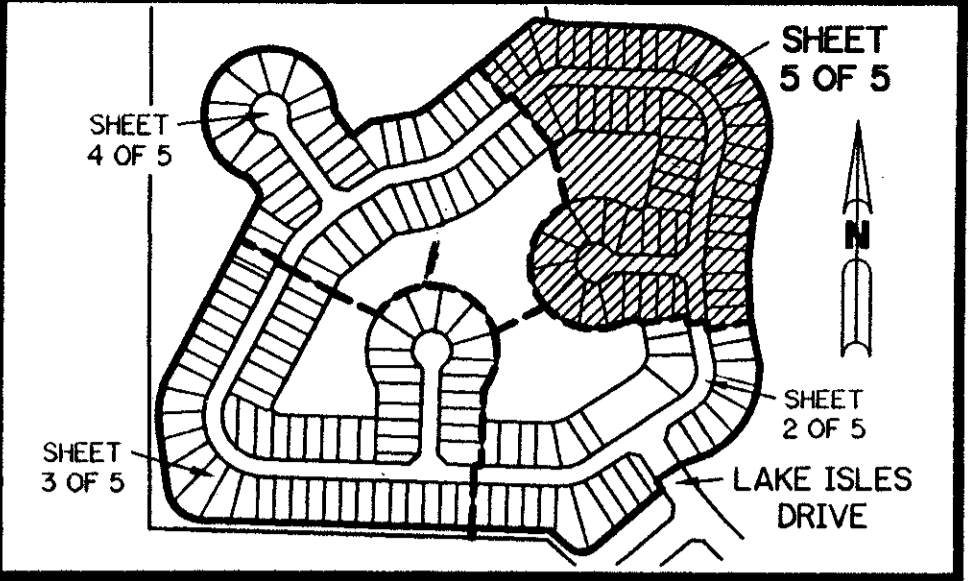
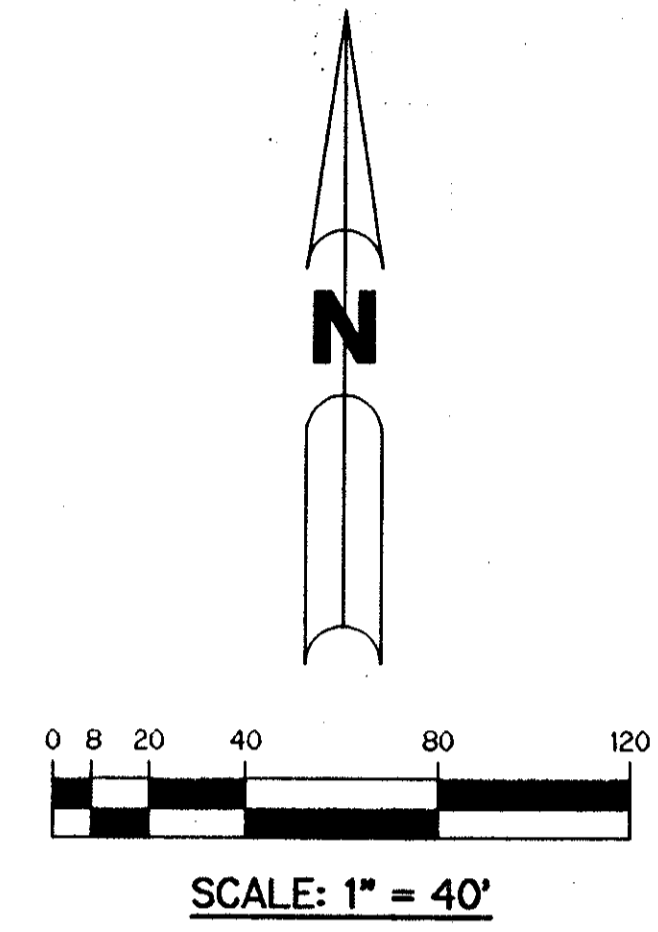


RET. 84-98  
ALOC #0001  
5/24/G



KEY MAP  
N.T.S.



A PART OF THE ORANGE POINT P.U.D.

# ORANGE POINT - TRACT "A"

BEING A REPLAT OF ALL OF TRACT "A" ACCORDING TO THE PLAT OF ORANGE POINT SECTION 23 AS RECORDED IN PLAT BOOK 79, PAGES 127 THROUGH 132, INCLUSIVE, OF THE PUBLIC RECORDS OF PALM BEACH COUNTY, FLORIDA. LYING IN SECTION 23, TOWNSHIP 44 SOUTH, RANGE 41 EAST. VILLAGE OF WELLINGTON, PALM BEACH COUNTY, FLORIDA

SHEET 5 OF 5 NOVEMBER, 1996

### LEGEND:

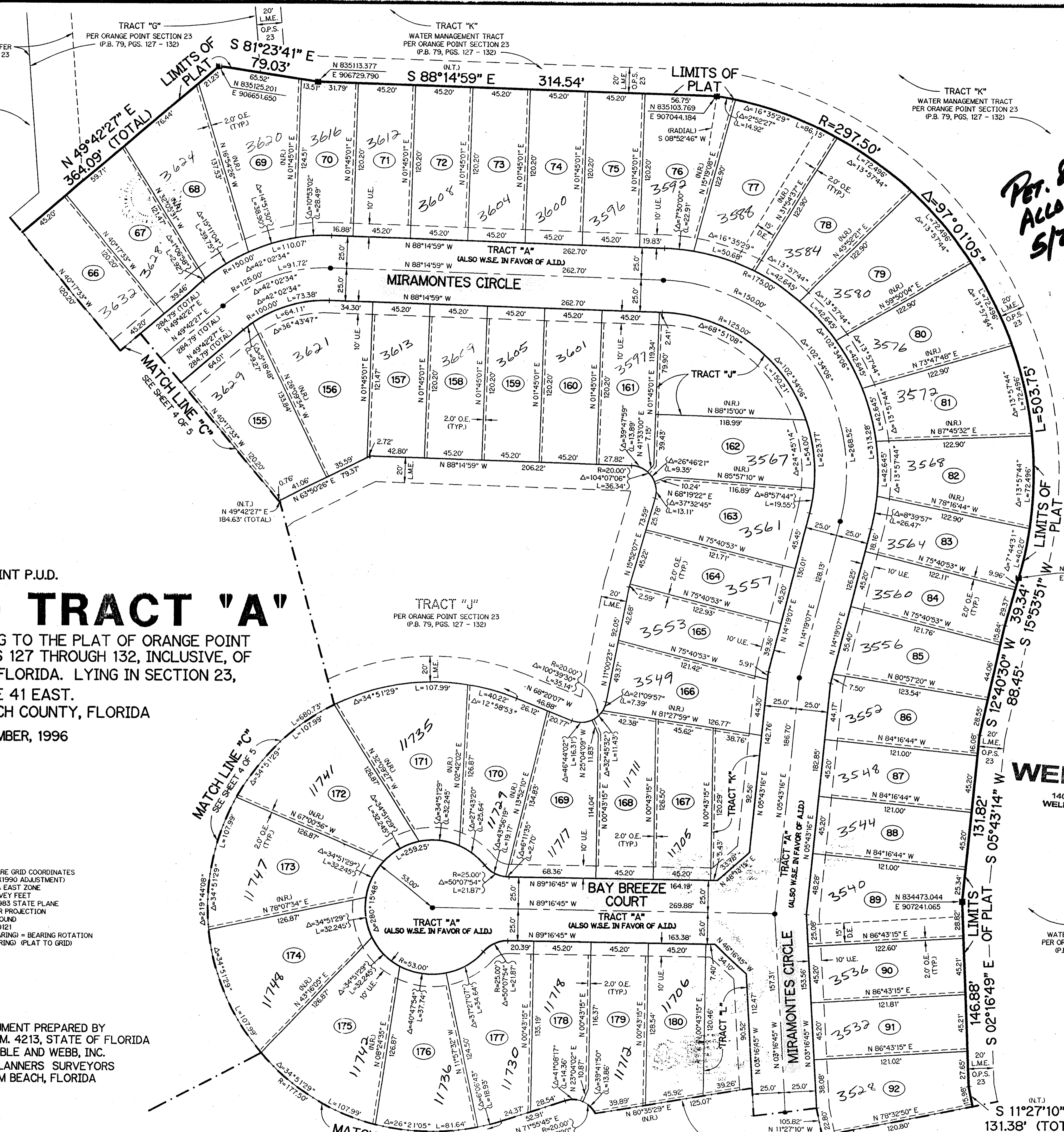
- - FOUND PERMANENT REFERENCE MONUMENT, P.L.S. #5273
- - PERMANENT REFERENCE MONUMENT, P.L.S. #4213
- - PERMANENT CONTROL POINT, P.L.S. #4213
- Δ - DELTA ANGLE
- A.I.D. - ACME IMPROVEMENT DISTRICT
- B.E. - BUFFER EASEMENT
- C.B. - CHORD BEARING
- C.D. - CHORD DISTANCE
- - CENTERLINE
- D.E. - DRAINAGE EASEMENT
- L - ARC LENGTH
- L.A.E. - LIMITED ACCESS EASEMENT
- L.M.A.E. - LAKE MAINTENANCE ACCESS EASEMENT
- L.M.E. - LAKE MAINTENANCE EASEMENT
- N.R. - NOT RADIAL
- N.T. - NOT TANGENT
- N.T.S. - NOT TO SCALE
- O.E. - OVERHANG EASEMENT
- O.P.S. 23 - PER ORANGE POINT SECTION 23 (P.B. 79, PGS. 127 - 132)
- O.R.B. - OFFICIAL RECORD BOOK
- O.S. - OPEN SPACE
- P.B. - PLAT BOOK
- P.C. - POINT OF CURVATURE
- P.G.S. - PAGES
- P.L.S. - PROFESSIONAL LAND SURVEYOR
- P.S.M. - PROFESSIONAL SURVEYOR AND MAPPER
- P.T. - POINT OF TANGENCY
- P.U.D. - PLANNED UNIT DEVELOPMENT
- R - RADIUS
- R/W - RIGHT-OF-WAY
- S.T. - SURVEY TIE
- T - TANGENT LENGTH
- U.E. - UTILITY EASEMENT
- W.S.E. - WATER & SEWER EASEMENT
- N 73°48'01" W - DENOTES STATE PLANE COORDINATES E 905258.2326

### NOTE:

COORDINATES SHOWN ARE GRID COORDINATES  
 DATUM = NAD 83 (1990 ADJUSTMENT)  
 ZONE = FLORIDA EAST ZONE  
 LINEAR UNIT = U.S. SURVEY FEET  
 COORDINATE SYSTEM 1983 STATE PLANE  
 TRAVERSE MERCATOR PROJECTION  
 ALL DISTANCES ARE GROUND  
 SCALE FACTOR = 1.0000121  
 S 88°14'59"E (PLAT BEARING) = BEARING ROTATION  
 S 88°14'59"E (GRID BEARING) (PLAT TO GRID)

THIS INSTRUMENT PREPARED BY  
 PERRY C. WHITE, P.S.M. 4213, STATE OF FLORIDA  
 LAWSON, NOBLE AND WEBB, INC.  
 ENGINEERS PLANNERS SURVEYORS  
 WEST PALM BEACH, FLORIDA

SUBDIVISION # TRACT A  
 BOOK 79 PAGE 202  
 FLOOD ZONE 100B FLOOD MAP # B  
 QUAD # 63 ZONING RE  
 SE 84-98 ZIP CODE 33414  
 PLD NAME VILLAGE OF WELLINGTON



VILLAGE OF WELLINGTON  
 14000 GREENBRIAR BLVD.  
 WELLINGTON, FLORIDA 33414  
 (561) 791-4000

TRACT "K"  
 WATER MANAGEMENT TRACT  
 PER ORANGE POINT SECTION 23  
 (P.B. 79, PGS. 127 - 132)

(N.T.)  
 S 11°27'10" E  
 131.38' (TOTAL)

0284-005

79/202