

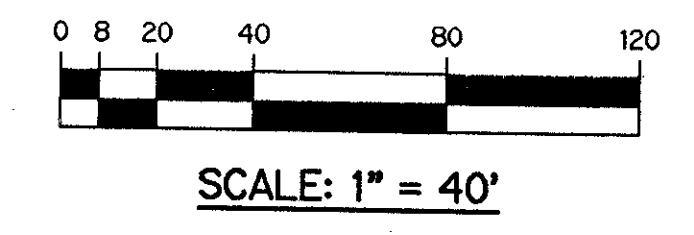
ORANGE POINT - REPLAT NO.1

BEING A REPLAT OF ALL OF TRACTS "B-1" AND "B-2" ACCORDING TO THE PLAT OF ORANGE POINT SECTION 23 AS RECORDED IN PLAT BOOK 79, PAGES 127 THROUGH 132, INCLUSIVE, AND A REPLAT OF ALL OF TRACT "F" ACCORDING TO THE PLAT OF ORANGE POINT PHASE 1 AS RECORDED IN PLAT BOOK 79, PAGES 121 THROUGH 124, INCLUSIVE, BOTH OF THE PUBLIC RECORDS OF PALM BEACH COUNTY, FLORIDA. LYING IN SECTION 23, TOWNSHIP 44 SOUTH, RANGE 41 EAST. VILLAGE OF WELLINGTON, PALM BEACH COUNTY, FLORIDA

SHEET 3 OF 4 DECEMBER, 1996

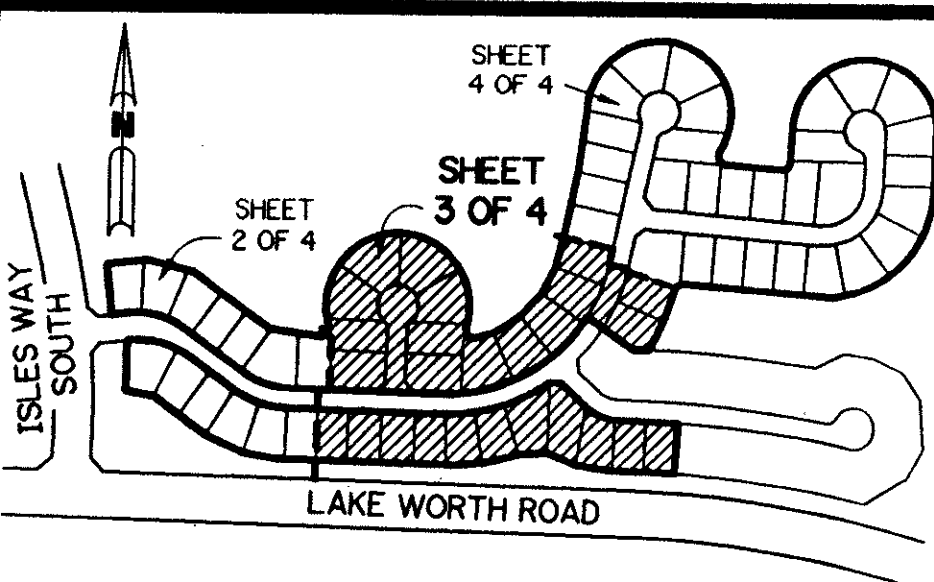
THIS INSTRUMENT PREPARED BY
 PERRY C. WHITE, P.S.M. 4213, STATE OF FLORIDA
 LAWSON, NOBLE AND WEBB, INC.
 ENGINEERS PLANNERS SURVEYORS
 WEST PALM BEACH, FLORIDA

*PET. 84-98
 ALLOC. #0001
 5/2/4/C*



VILLAGE OF WELLINGTON
 14000 GREENBRIAR BLVD.
 WELLINGTON, FLORIDA 33414
 (561) 791-4000

(TOTAL)
 R=25.00'
 $\Delta=79^{\circ}41'02''$
 L=34.77'



KEY MAP
N.T.S.

TRACT "O"
 WATER MANAGEMENT TRACT
 PER ORANGE POINT SECTION 23
 (P.B. 79, PGS. 127 - 132)

TRACT "O"
 WATER MANAGEMENT TRACT
 PER ORANGE POINT SECTION 23
 (P.B. 79, PGS. 127 - 132)

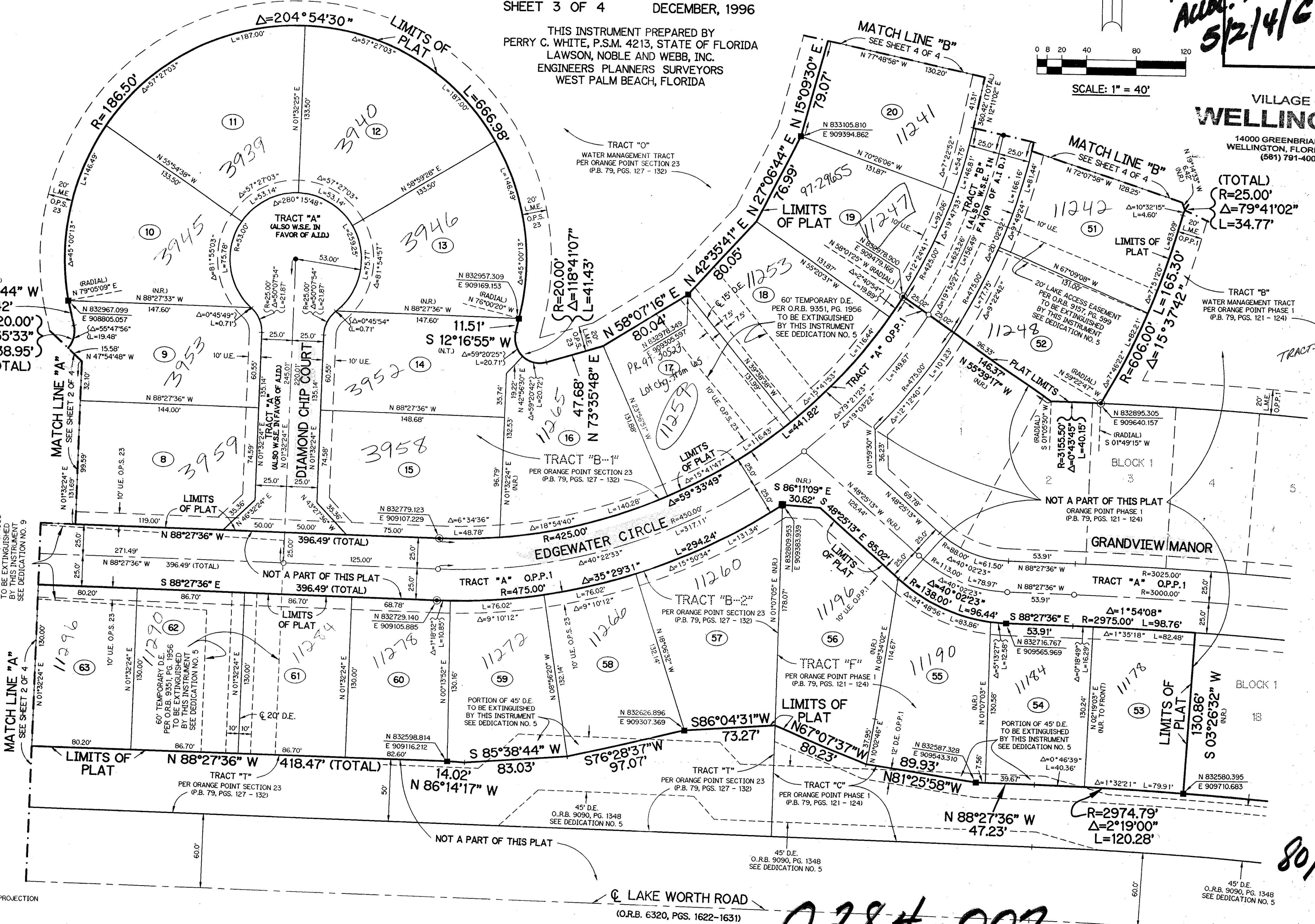
TRACT "O"
 WATER MANAGEMENT TRACT
 PER ORANGE POINT SECTION 23
 (P.B. 79, PGS. 127 - 132)

TRACT "B"
 WATER MANAGEMENT TRACT
 PER ORANGE POINT PHASE 1
 (P.B. 79, PGS. 121 - 124)

- LEGEND:**
- - FOUND PERMANENT REFERENCE MONUMENT, PLS #5273
 - - FOUND PERMANENT CONTROL POINT, PLS #5273
 - - PERMANENT REFERENCE MONUMENT, PLS #4213
 - - PERMANENT CONTROL POINT, PLS #4213
 - Δ - DELTA ANGLE
 - A.I.D. - ACME IMPROVEMENT DISTRICT
 - B.E. - BUFFER EASEMENT
 - C.B. - CHORD BEARING
 - C.D. - CHORD DISTANCE
 - G - CENTERLINE
 - D.E. - DRAINAGE EASEMENT
 - L - ARC LENGTH
 - L.A.E. - LIMITED ACCESS EASEMENT
 - L.M.A.E. - LAKE MAINTENANCE ACCESS EASEMENT
 - L.M.E. - LAKE MAINTENANCE EASEMENT
 - N.R. - NOT RADIAL
 - N.T. - NOT TANGENT
 - N.T.S. - NOT TO SCALE
 - O.E. - OVERHANG EASEMENT
 - O.P.S. 23 - PER ORANGE POINT SECTION 23 (P.B. 79, PGS. 127 - 132)
 - O.P.P.1 - PER ORANGE POINT PHASE 1 (P.B. 79, PGS. 121 - 124)
 - O.R.B. - OFFICIAL RECORD BOOK
 - O.S. - OPEN SPACE
 - P.B. - PLAT BOOK
 - P.C. - POINT OF CURVATURE
 - P.S. - PAGES
 - PLS - PROFESSIONAL LAND SURVEYOR
 - P.S.M. - PROFESSIONAL SURVEYOR AND MAPPER
 - P.T. - POINT OF TANGENCY
 - P.U.D. - PLANNED UNIT DEVELOPMENT
 - R - RADIUS
 - R/W - RIGHT-OF-WAY
 - S.T. - SURVEY TIE
 - T - TANGENT LENGTH
 - U.E. - UTILITY EASEMENT
 - W.S.E. - WATER AND SEWER EASEMENT
 - N 73748.0171 - DENOTES STATE PLANE COORDINATES
 - E 905258.2326

SUBDIVISION # 10
 BOOK 80 PAGE 10
 FLOOD ZONE 100B FLOOD MAP # 4
 QUAD # 63 ZONING RE
 SE 84-98 ZIP CODE 33414
 PUD NAME VILLAGE OF WELLINGTON

NOTE:
 COORDINATES SHOWN ARE GRID COORDINATES:
 DATUM = NAD 83 (1990 ADJUSTMENT)
 ZONE = FLORIDA EAST ZONE
 LINEAR UNIT = U.S. SURVEY FEET
 COORDINATE SYSTEM 1983 STATE PLANE TRANSVERSE MERCATOR PROJECTION
 ALL DISTANCES ARE GROUND
 SCALE FACTOR = 1.0000121
 PLAT BEARING = GRID BEARING (NO ROTATION)



80/10

0284-007