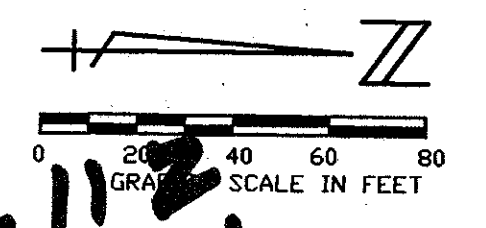
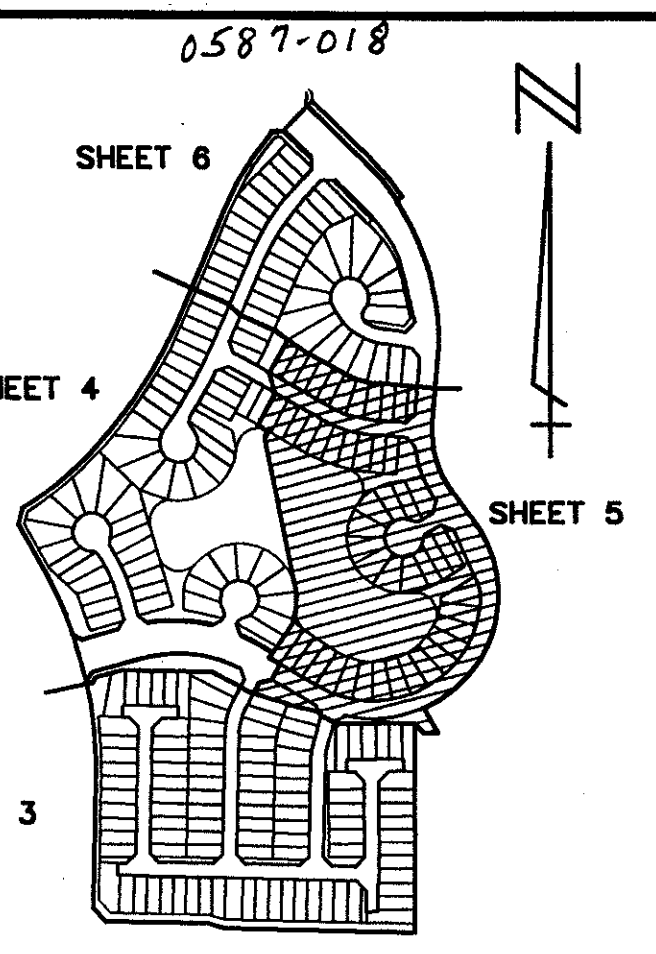


WINSTON TRAILS PARCEL ELEVEN

PART OF WINSTON TRAILS P. U. D.
SITUATE IN SECTION 2, TOWNSHIP 45 SOUTH, RANGE 42 EAST
PALM BEACH COUNTY, FLORIDA
APRIL, 1997 SHEET 5 OF 6

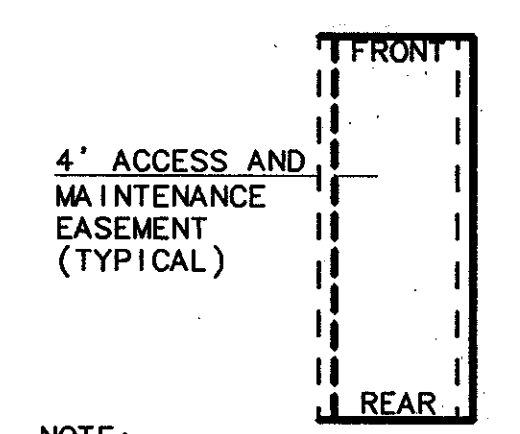
22

STATE OF FLORIDA
COUNTY OF PALM BEACH
RECORD _____
THIS _____ DAY OF _____
AD, 1997 AND DULY RECORDED
IN PLAT BOOK _____ ON PAGES
_____ AND _____
DOROTHY H. WILKEN, CLERK
BY: _____, D.C.



PET. 87-112
Alloc. #0001
5/2/2/E

- LEGEND
- A ARC LENGTH
 - A.M.E. ACCESS AND MAINTENANCE EASEMENT
 - B.E. BUFFER EASEMENT
 - Δ CENTRAL (DELTA) ANGLE
 - D.E. DRAINAGE EASEMENT
 - FPL FLORIDA POWER & LIGHT
 - L.A.E. LIMITED ACCESS EASEMENT
 - L.E. LANDSCAPE EASEMENT
 - L.M.E. LAKE MAINTENANCE EASEMENT
 - L.M.A.E. LAKE MAINTENANCE ACCESS EASEMENT
 - P.O.B. POINT OF BEGINNING
 - P.O.C. POINT OF COMMENCEMENT
 - P.U.D. PLANNED UNIT OF DEVELOPMENT
 - (NR) NON-RADIAL
 - O.R.B. OFFICIAL RECORD BOOK
 - P.B. PLAT BOOK
 - PG(S) PAGE(S)
 - R RADIUS
 - (TYP) TYPICAL
 - U.E. UTILITY EASEMENT
 - PERMANENT REFERENCE MONUMENT FOUND PLS# 4763
 - PERMANENT REFERENCE MONUMENT SET PLS# 4763
 - PERMANENT CONTROL POINT SET PLS# 4763
 - ⊙ CENTERLINE



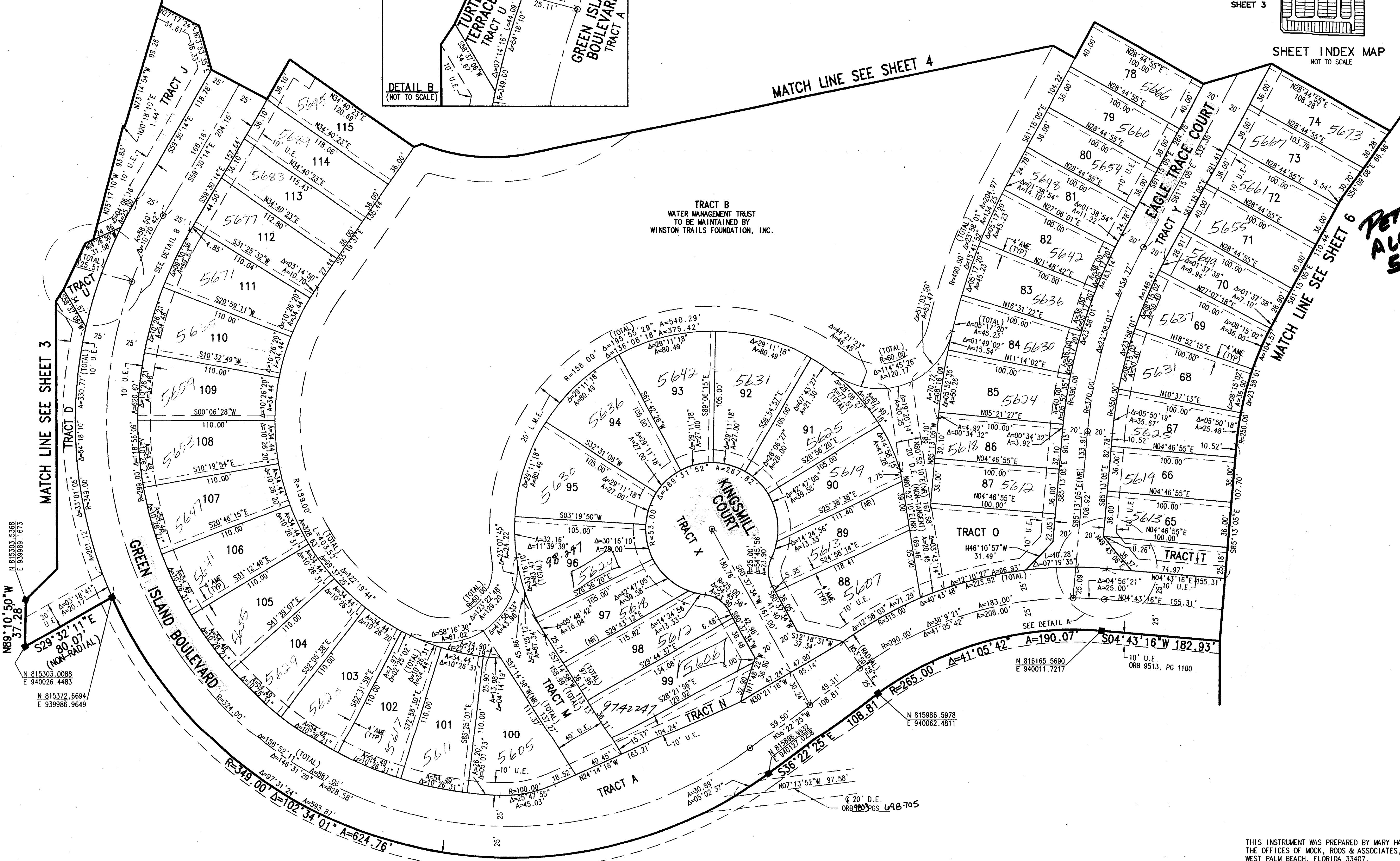
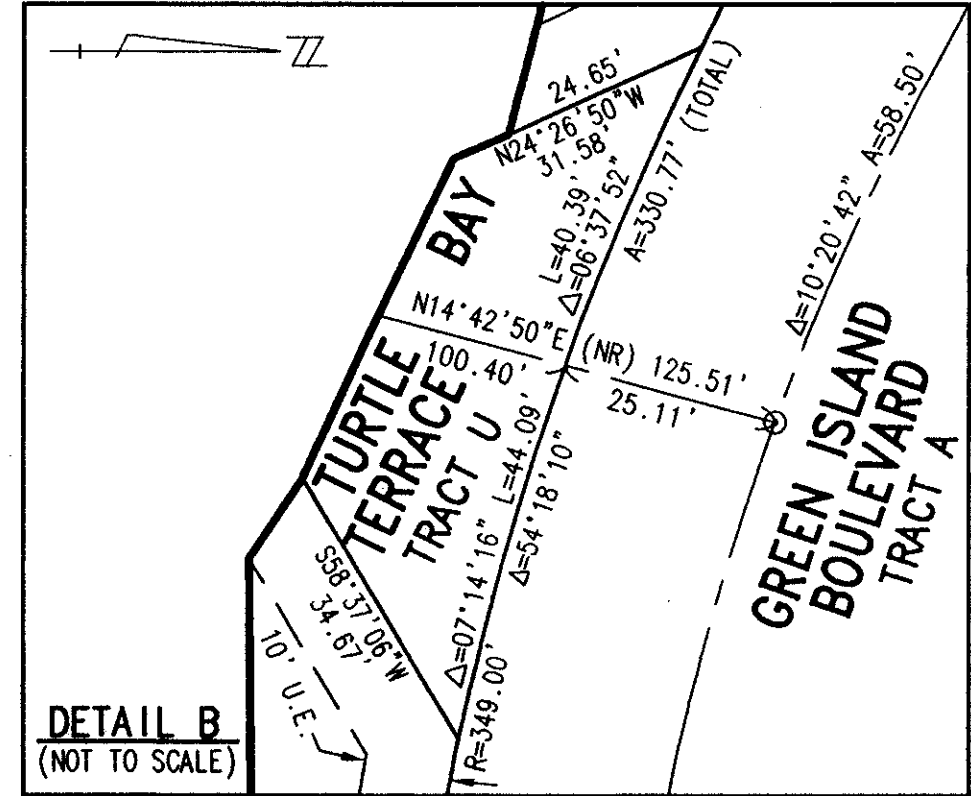
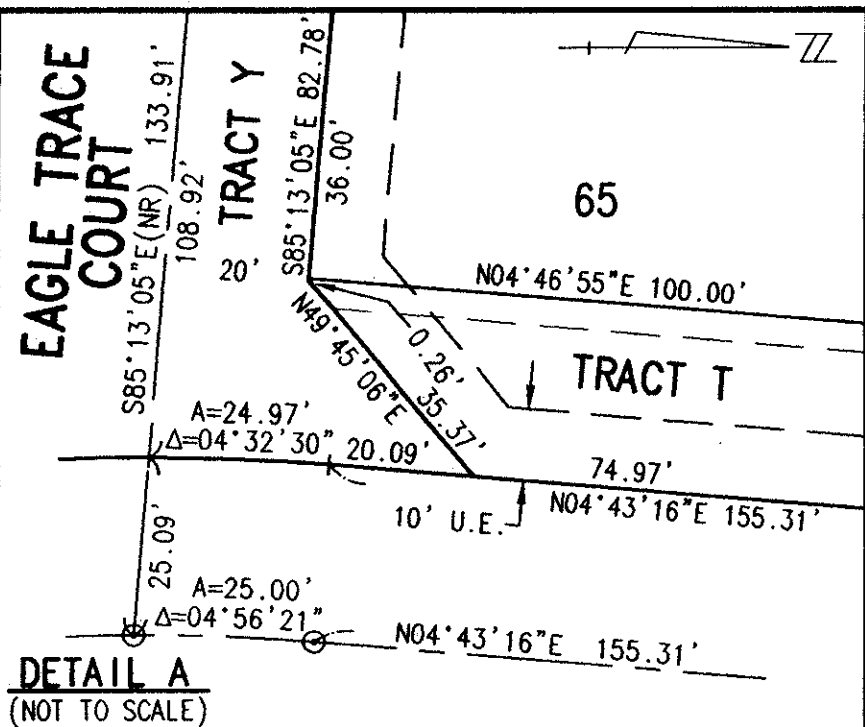
NOTE:
AN ACCESS AND MAINTENANCE EASEMENT, 4 FEET IN WIDTH, EXISTS ADJACENT TO AND CONTIGUOUS WITH THE ZERO LOT LINE OF THE ADJOINING LOT. THIS EASEMENT IS FOR ACCESS AND MAINTENANCE AND IS IN FAVOR OF THE ADJOINING LOT. ITS SUCCESSORS AND ASSIGNS, WITHOUT RECOURSE TO PALM BEACH COUNTY.

DETAIL FOR ZERO LOT LINE EASEMENT
NOT TO SCALE

80/22

THIS INSTRUMENT WAS PREPARED BY MARY HANNA CLODFELTER, P.L.S., IN THE OFFICES OF MOCK, ROOS & ASSOCIATES, INC., 5720 CORPORATE WAY, WEST PALM BEACH, FLORIDA 33407.

SHEET 5 OF 6



TRACT B
WATER MANAGEMENT TRUST
TO BE MAINTAINED BY
WINSTON TRAILS FOUNDATION, INC.

NOT PLATTED

10' U.E.
ORB 9513, PG 1100

0587-018

SCALE:
1" = 40'
P.A. NO.:
96103.00
DATE:
JULY 1996
DRAWING NO.:
45-42-02-50

MOCK ROOS
ENGINEERS SURVEYORS PLANNERS

5720 Corporate Way, West Palm Beach, Florida 33407
(407) 683-3113, fax 478-7248

WINSTON TRAILS
PARCEL ELEVEN
PART OF "WINSTON TRAILS, P.U.D."
SECTION 2, TOWNSHIP 45 SOUTH, RANGE 42 EAST
PALM BEACH COUNTY, FLORIDA

SUBDIVISION * WINSTON TRAILS
BOOK 80 PAGE 22
FLOOD ZONE B FLOOD MAP # 1750
CHAD # 34 ZONING REVISION
38 3-0-0-0 ZIP CODE 33411
PUD NAME WINSTON TRAILS PUD

REV. 04-10-97
CAD FILE:
MUSSWINT/WINTRP04