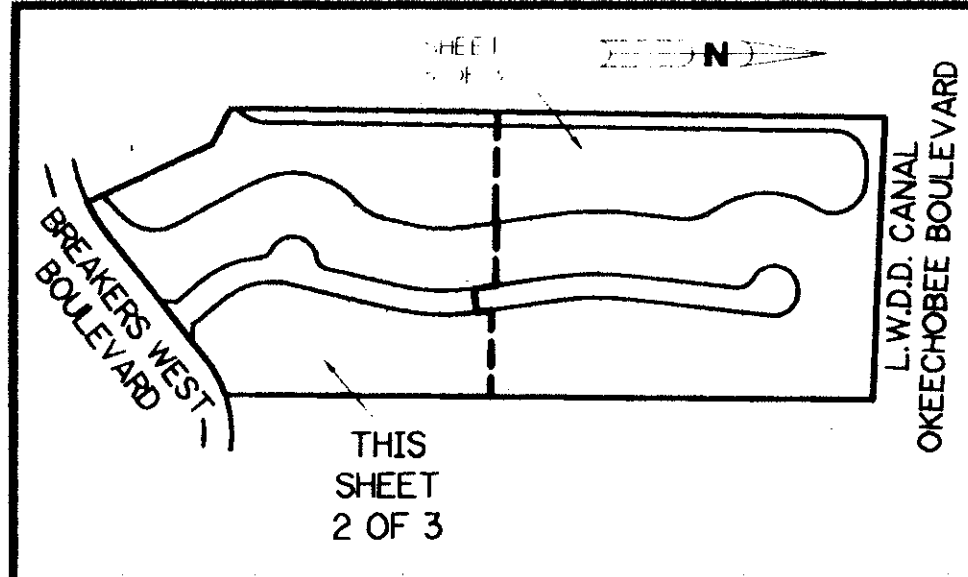


PART OF A PLANNED UNIT DEVELOPMENT

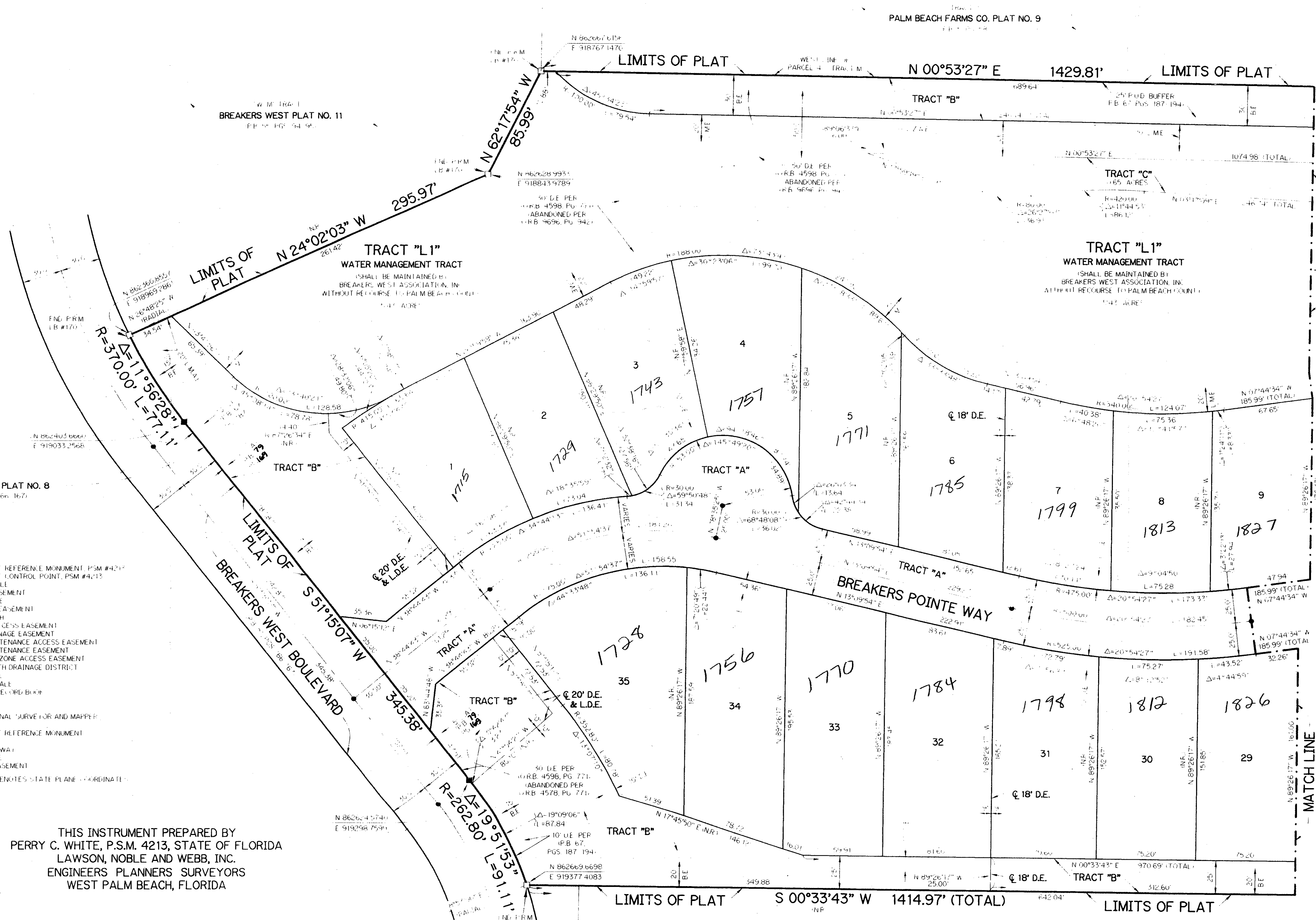
BREAKERS POINTE

BEING A REPLAT OF ALL OF TRACT "A" ACCORDING TO THE PLAT OF "BREAKERS WEST PLAT NO. 18, TRACT M REPLAT" AS RECORDED IN PLAT BOOK 19, PAGES 162 THROUGH 172, INCLUSIVE, OF THE PUBLIC RECORDS OF PALM BEACH COUNTY, FLORIDA. LYING IN SECTION 30, TOWNSHIP 43 SOUTH, RANGE 42 EAST.

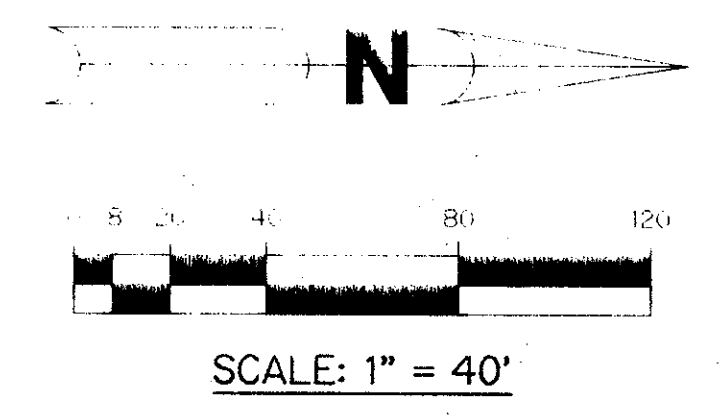
SHEET 2 OF 3 FEBRUARY, 1997



KEY MAP



*Pet. 73-219
5/2/2/F*



*Pet. 73-219
BREAKERS WEST PLAT
PARCEL Q*

- LEGEND:**
- PERMANENT REFERENCE MONUMENT, PSM #421
 - PERMANENT CONTROL POINT, PSM #413
 - ∠ DELTA ANGLE
 - BE BUFFER EASEMENT
 - EL CENTERLINE
 - DE DRAINAGE EASEMENT
 - AL AIR-CEILING
 - LA LIMITED ACCESS EASEMENT
 - LD LAKE DRAINAGE EASEMENT
 - MAE LAKE MAINTENANCE ACCESS EASEMENT
 - ME LAKE MAINTENANCE EASEMENT
 - LZAE LITTORAL ZONE ACCESS EASEMENT
 - WLD LAKE WORTH DRAINAGE DISTRICT
 - NR NORTH RADIAL
 - NT NORTH TANGENT
 - PE PERMANENT EASEMENT
 - PL PLAT BOOK
 - PM PROFESSIONAL SURVEYOR AND MAPPER
 - FO FOUND
 - PRM PERMANENT REFERENCE MONUMENT
 - R RADIUS
 - RT RIGHT OF WAY
 - ST SURVEY TIE
 - TE TIE EASEMENT
 - SP STATE PLANE COORDINATE

NOTE:

COORDINATES SHOWN ARE GRID COORDINATES, DATUM = NAD 83 (1990 ADJUSTMENT), ZONE = FLORIDA EAST ZONE, LINEAR UNIT = US SURVEY FEET, COORDINATE SYSTEM 1983 STATE PLANE TRANSVERSE MERCATOR PROJECTION, ALL DISTANCES ARE GROUND, SCALE FACTOR = 1.00002, GROUND DISTANCE = SCALE FACTOR * GRID DISTANCE, S 87°45'58" E (PLAT BEARING), S 88°46'47" E (GRID BEARING), 1'00"49" = BEARING ROTATION (PLAT TO GRID).

THIS INSTRUMENT PREPARED BY
PERRY C. WHITE, P.S.M. 4213, STATE OF FLORIDA
LAWSON, NOBLE AND WEBB, INC.
ENGINEERS PLANNERS SURVEYORS
WEST PALM BEACH, FLORIDA

SUBDIVISION: Breakers Pointe
BOOK: 60
PAGE: 60
FLOOD ZONE: B
FLOOD MAP: 1504
ZONING: RS
ZIP CODE: 334
PUD NAME: Breakers West Plat 18
BEING A REPLAT OF ALL TRACT A

0217-022

80/60