

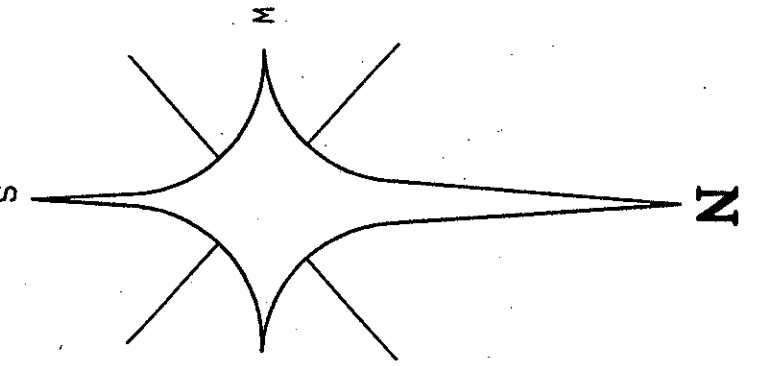
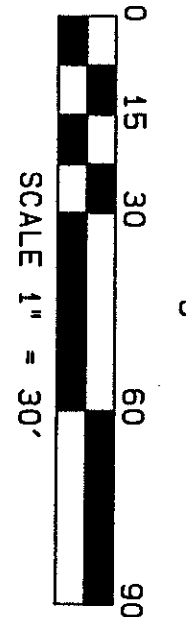
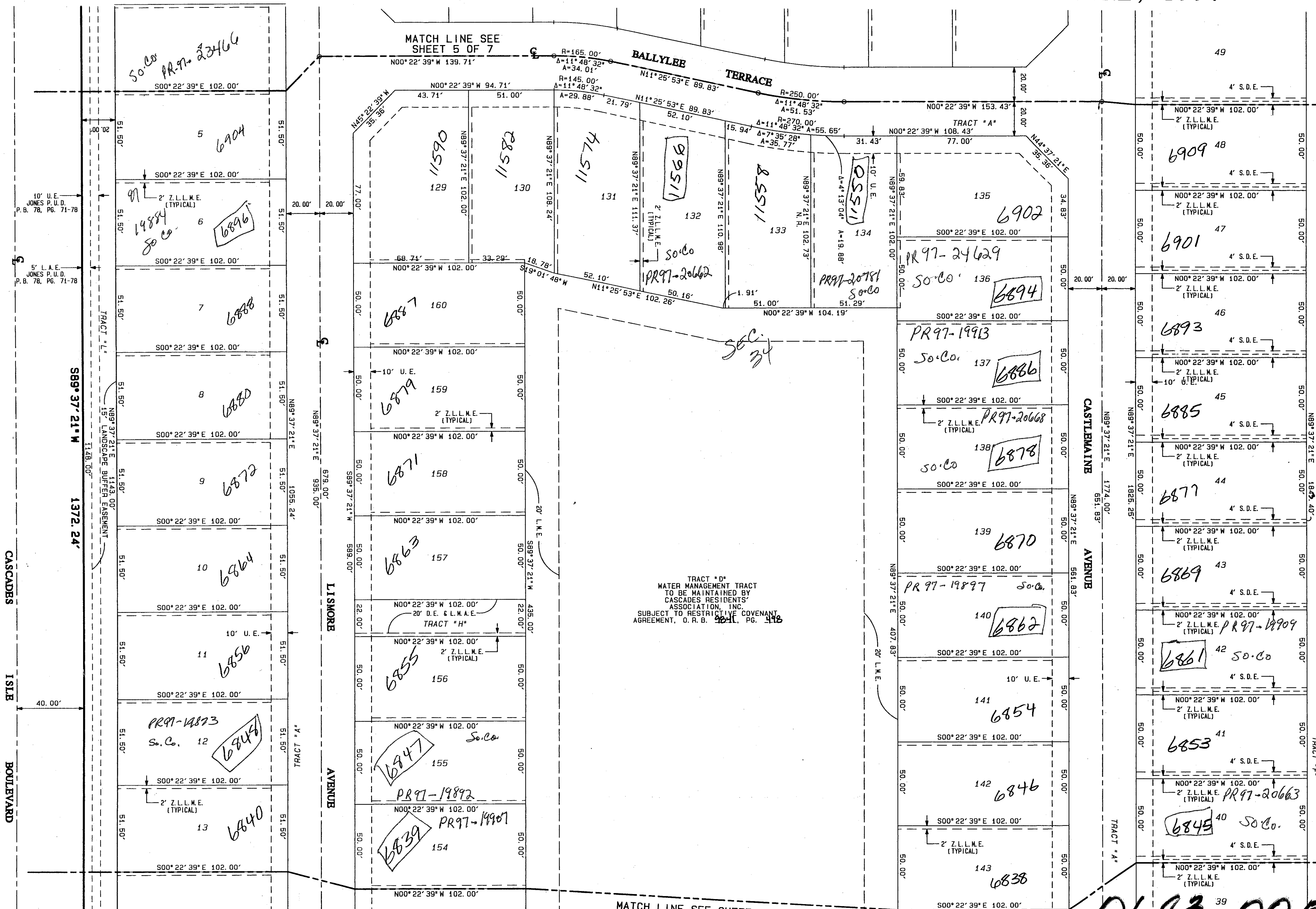
KEY MAP  
NOT TO SCALE

# JONES - PARCEL "C-1"

77

BEING A REPLAT OF PARCEL "C-1", TRACT "K-11" AND A PORTION OF TRACT "K-13", JONES P.U.D. AS RECORDED IN PLAT BOOK 78, PAGES 71 THROUGH 78 OF THE PUBLIC RECORDS OF PALM BEACH COUNTY, FLORIDA SITUATE IN SECTIONS 33 AND 34, TOWNSHIP 45 SOUTH, RANGE 42 EAST, PALM BEACH COUNTY, FLORIDA  
SHEET 6 OF 7  
JUNE, 1997

STATE OF FLORIDA }  
COUNTY OF PALM BEACH } SS  
THIS PLAT WAS FILED FOR  
RECORD AT \_\_\_\_\_ DAY OF  
THIS \_\_\_\_\_ AD, 1997 AND  
DULY RECORDED IN PLAT BOOK  
\_\_\_\_\_ ON PAGES \_\_\_\_\_ AND  
\_\_\_\_\_  
DOROTHY H. WILKEN, CLERK  
CIRCUIT COURT  
BY: \_\_\_\_\_ DC



*PET. 95-19  
ALOC. # 0001  
NO SCHOOLS - RESTRICTIVE  
COVENANT  
5/3B/K*

- LEGEND:**
- A = CENTRAL ANGLE/DELTA
  - C = CENTERLINE
  - CH = CHORD
  - D.B. = DEED BOOK
  - D.E. = DRAINAGE EASEMENT
  - F.P. & L. = FLORIDA POWER AND LIGHT COMPANY
  - L.A.E. = LIMITED ACCESS EASEMENT
  - L.M.A.E. = LAKE MAINTENANCE ACCESS EASEMENT
  - L.M.E. = LAKE MAINTENANCE EASEMENT
  - L.W.D. = LAKE WORTH DRAINAGE DISTRICT
  - N.R. = NON-RADIAL
  - N.T.S. = NOT TO SCALE
  - O.R.B. = OFFICIAL RECORDS BOOK
  - P.B. = PLAT BOOK
  - P6 = PAGE
  - P.O.B. = POINT OF BEGINNING
  - P.O.C. = POINT OF COMMENCEMENT
  - R. = RADIUS (RADI)
  - R.F. = RADIAL TO FRONT LOT LINE
  - R.R. = RADIAL TO REAR LOT LINE
  - R.W. = RIGHT OF WAY
  - S.D.E. = SMALE DRAINAGE EASEMENT
  - U.E. = UTILITY EASEMENT
  - W.C. = WITNESS CORNER
  - Z.L.L.M.E. = ZERO LOT LINE MAINTENANCE EASEMENT
  - = PERMANENT CONTROL POINT (PCP)  
PCP #4380
  - = PERMANENT REFERENCE MONUMENT (PRM)  
SET PRM #4380

SUBDIVISION \* JONES  
BOOK 80 PAGE 77  
FLOOD MAP # 404A  
ZONING PDD  
ROAD # 50  
ZIP CODE 33461  
PUB NAME JONES PARCEL C-1

TRACT "D"  
WATER MANAGEMENT TRACT  
TO BE MAINTAINED BY  
CASCADES RESIDENTS'  
ASSOCIATION, INC.  
SUBJECT TO RESTRICTIVE COVENANT  
AGREEMENT, O.R.B. 96-1, PG. 448

1851.55 (TOTAL)

80/77

0683-005

PROFESSIONAL SURVEYORS AND MAPPERS  
**ATLANTIC - CARIBBEAN MAPPING, INC.**  
3062 JOC ROAD GREENACRES, FLORIDA 33457  
(561) 964-7884; FAX (561) 964-1969