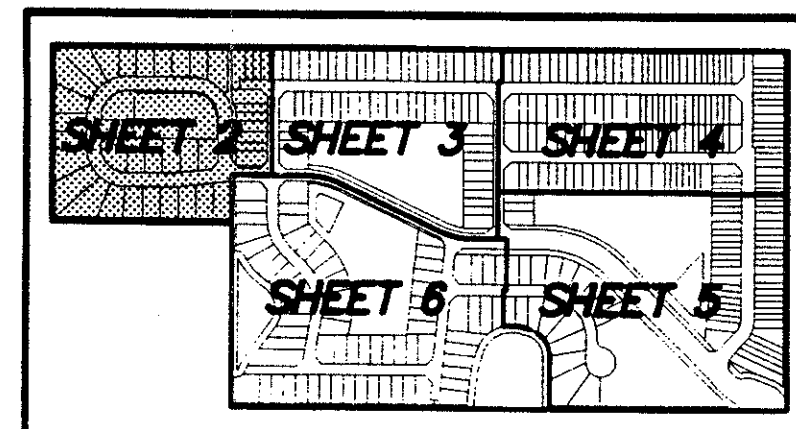


PLAT OF
MIZNER POINTE OF BOCA, VIA ANCHO
 PLANNED UNIT DEVELOPMENT

BEING A REPLAT OF PORTION OF BLOCK 79, PALM BEACH FARMS COMPANY PLAT NO. 3,
 PLAT BOOK 2, PAGES 45-54, PUBLIC RECORDS OF PALM BEACH COUNTY, FLORIDA,
 LYING IN SECTION 20, TOWNSHIP 47 SOUTH, RANGE 42 EAST,
 PALM BEACH COUNTY, FLORIDA.

SHEET 2 OF 6 SHEETS FEBRUARY 1997

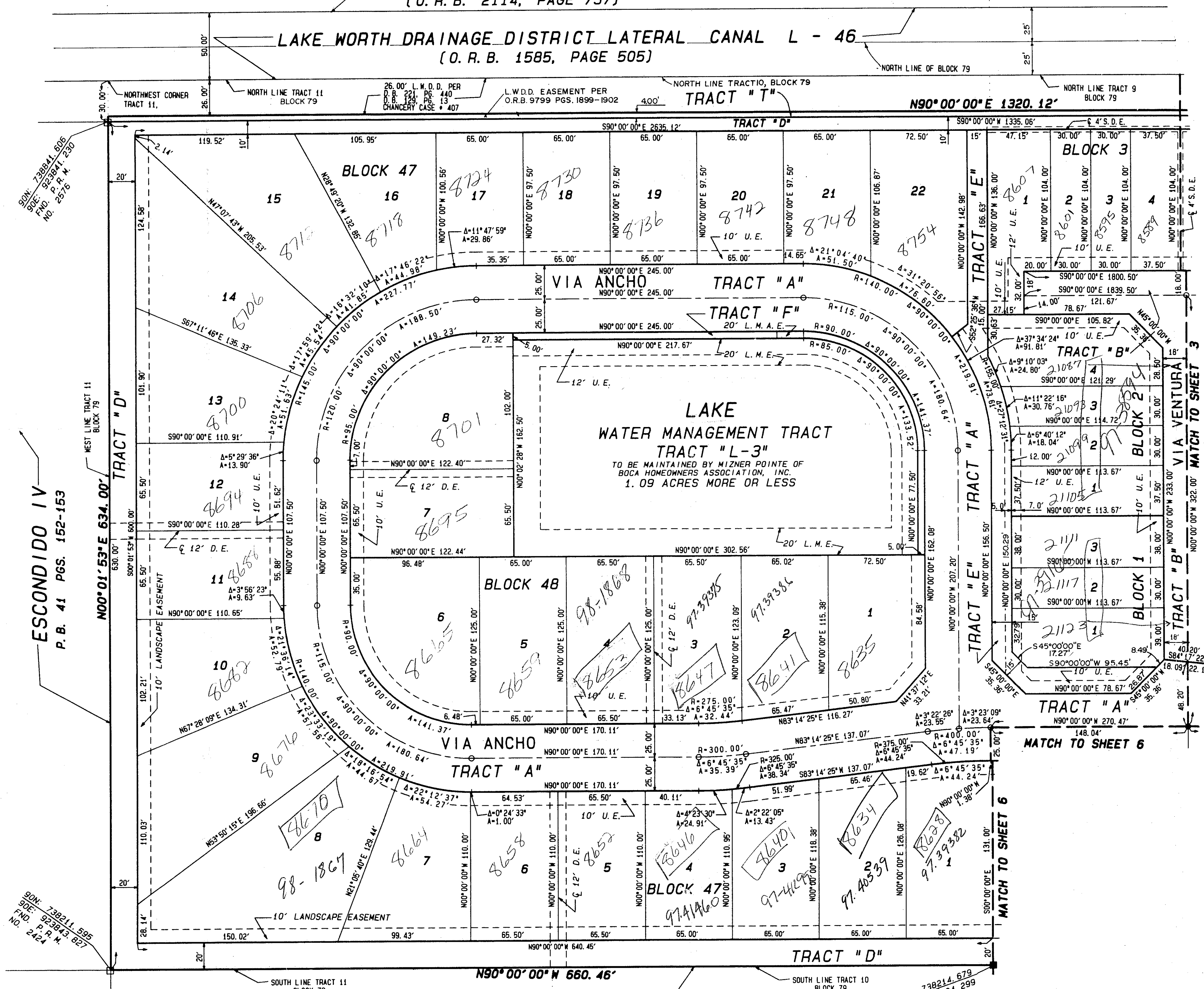
0690-001



KEY MAP
 N.T.S.

97

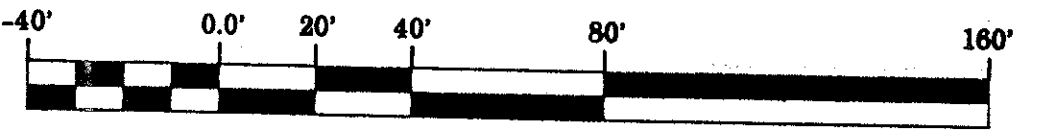
PLAT OF BOCA LAKES CONDO
 (O. R. B. 2114, PAGE 737)



STUDY DIVISION *
 BOOK 80
 FLOOD ZONE 6
 QUAD # 54
 ZIP CODE 33436
 MIZNER POINTE OF BOCA
 VIA ANCHO
 PAGE 97
 FLOOD MAP # 2336
 ZONING P.D.
 VIA ANCHO

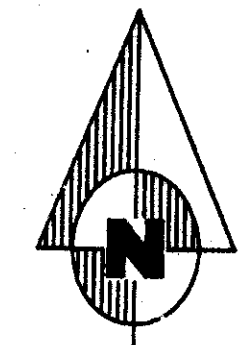
SON: 738211.595
 90E: 92394.627
 P.P.M. # 2424

SON: 738214.679
 90E: 924504.299



GRAPHIC SCALE
 1 INCH = 40 FEET

- LEGEND:
- P.B. = PLAT BOOK
 - PG. = PAGE
 - P.R.M. = PERMANENT REFERENCE MONUMENT
 - Δ = DELTA ANGLE
 - A = ARC LENGTH
 - C.B. = CHORD BEARING
 - O.R.B. = OFFICIAL RECORD BOOK
 - D.B. = DEED BOOK
 - R.W. = RIGHT-OF-WAY
 - F.P.&L. = FLORIDA POWER & LIGHT
 - C/L = CENTERLINE
 - R.O.H. = ROOF OVERHANG AND RECIPROCAL MAINTENANCE EASEMENTS
 - = DENOTES SET P.R.M. # 2297 UNLESS OTHERWISE NOTED
 - = DENOTES FOUND P.R.M. AS NOTED
 - = DENOTES SET PERMANENT CONTROL POINT (P.C.P.)
 - ⊥ = DENOTES ZERO LOT LINE ON THE SIDE OF THE LINE SHOWN.
 - S.D.E. = SWALE DRAINAGE EASEMENT
 - P.U.D. = PLANNED UNIT DEVELOPMENT
 - U.E. = UTILITY EASEMENT
 - D.E. = DRAINAGE EASEMENT
 - L.M.E. = LAKE MAINTENANCE EASEMENT
 - L.A.E. = LIMITED ACCESS EASEMENT
 - * = RADIAL LINE
 - P.O.B. = POINT OF BEGINNING
 - L.M.A.E. = LAKE MAINTENANCE ACCESS EASEMENT



VISTA DEL BOCA
 P. B. 37 PGS. 55 - 56

THIS INSTRUMENT WAS PREPARED BY PEDRO B. MORALES IN THE OFFICES OF DAILEY-FOTONY, INC., 5050 10TH AVENUE NORTH, LAKE WORTH, FLORIDA, 33463

Dailey-Fotony, inc.
 land surveyors - planners
 5050 10th Avenue North Suite A - Lake Worth FL 33463-2062
 Phone: 561-965-8787 Fax: 561-965-8963