

5000-323
THE NORTHWEST CORNER OF SECTION 27/46/42
FD. IR&C "MOCK ROOS"

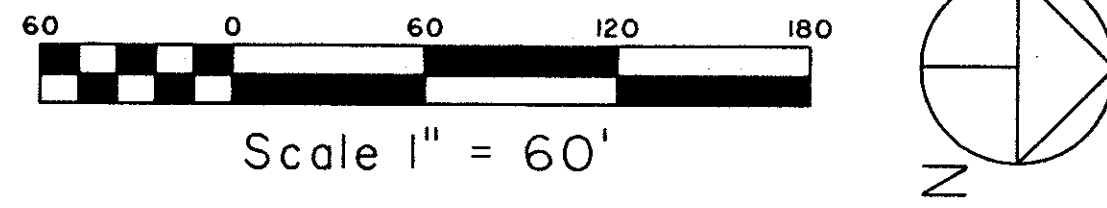
STATE OF FLORIDA
COUNTY OF PALM BEACH
THIS PLAT WAS FILED FOR RECORD AT
M. THIS DAY OF 19
AND DULY RECORDED IN PLAT BOOK NO.
ON PAGE
DOROTHY H. WILKEN, CLERK OF THE CIRCUIT COURT
BY D.C.

MANOR CARE

LYING IN SECTION 27, TOWNSHIP
46 SOUTH, RANGE 42 EAST.
PALM BEACH COUNTY, FLORIDA.

SHEET 2 OF 2 JANUARY, 1997

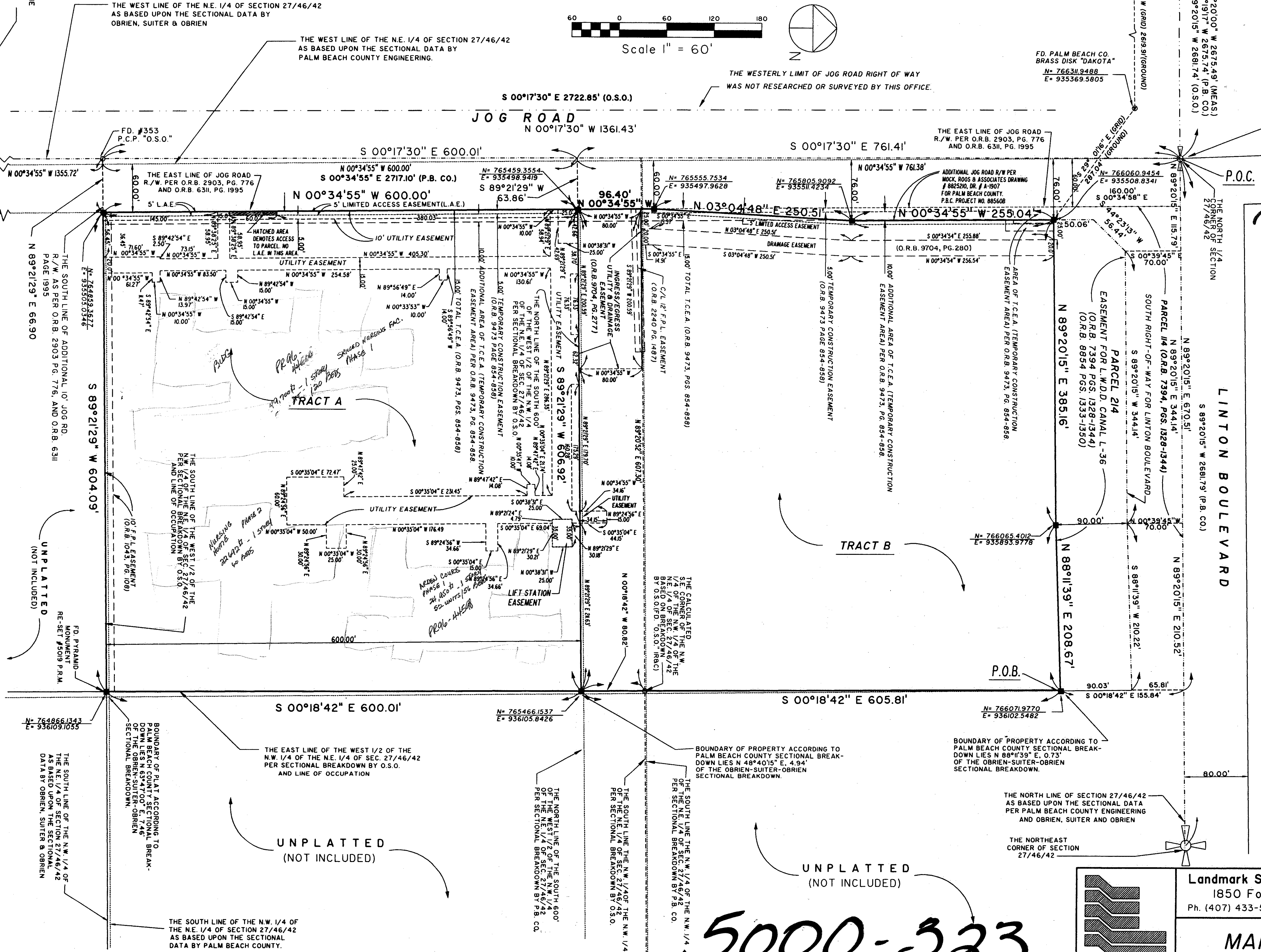
COORDINATE NOTE:
STATE PLANE COORDINATES SHOWN ARE GRID DATUM, NAD 83 1990
ADJUSTMENT, FLORIDA EAST ZONE, COORDINATE SYSTEM 1983 STATE
PLANE TRANSVERSE MERCATOR PROJECTION.
LINEAR UNIT - US SURVEY FEET
ALL DISTANCES ARE GROUND
SCALE FACTOR = 0.999930558
GROUND DISTANCE x SCALE FACTOR = GRID DISTANCE
BEARINGS AS SHOWN HEREON ARE GRID DATUM, NAD 83 1990
ADJUSTMENT, FLORIDA EAST ZONE.



CENTER OF SECTION 27/46/42 AS PER THE SECTIONAL DATA BY O'BRIEN, SUITER & O'BRIEN
C.S. 66333.53 M. 1.4815' OF CENTER SECTIONAL BREAKDOWN.

THE SOUTH LINE OF THE N.E. 1/4 OF SECTION 27/46/42 AS BASED UPON THE SECTIONAL DATA BY O'BRIEN, SUITER & O'BRIEN

THE SOUTH LINE OF THE N.E. 1/4 OF SECTION 27/46/42 AS BASED UPON THE SECTIONAL DATA BY PALM BEACH COUNTY ENGINEERING.

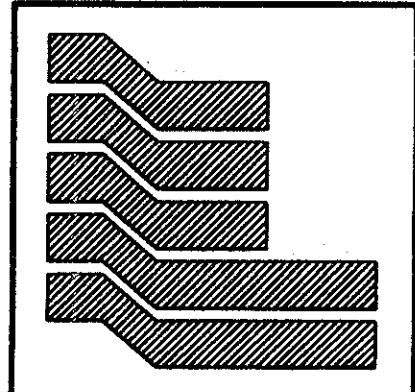


*RET. 96-49
5/3/3/K*

THE PLAT OF KINGS POINT
(P.B. 29, PG. 139)

MANOR CARE
PAGE 103
FLOOD HAZARD ZONING
FLOOD ZONE B
SECTION 27/46/42
SECTIONAL DATA BY O'BRIEN, SUITER & O'BRIEN

5000-323



Landmark Surveying & Mapping Inc.
1850 Forest Hill Boulevard
Ph. (407) 433-5405 Suite 100 W.P.B. Florida

MANOR CARE