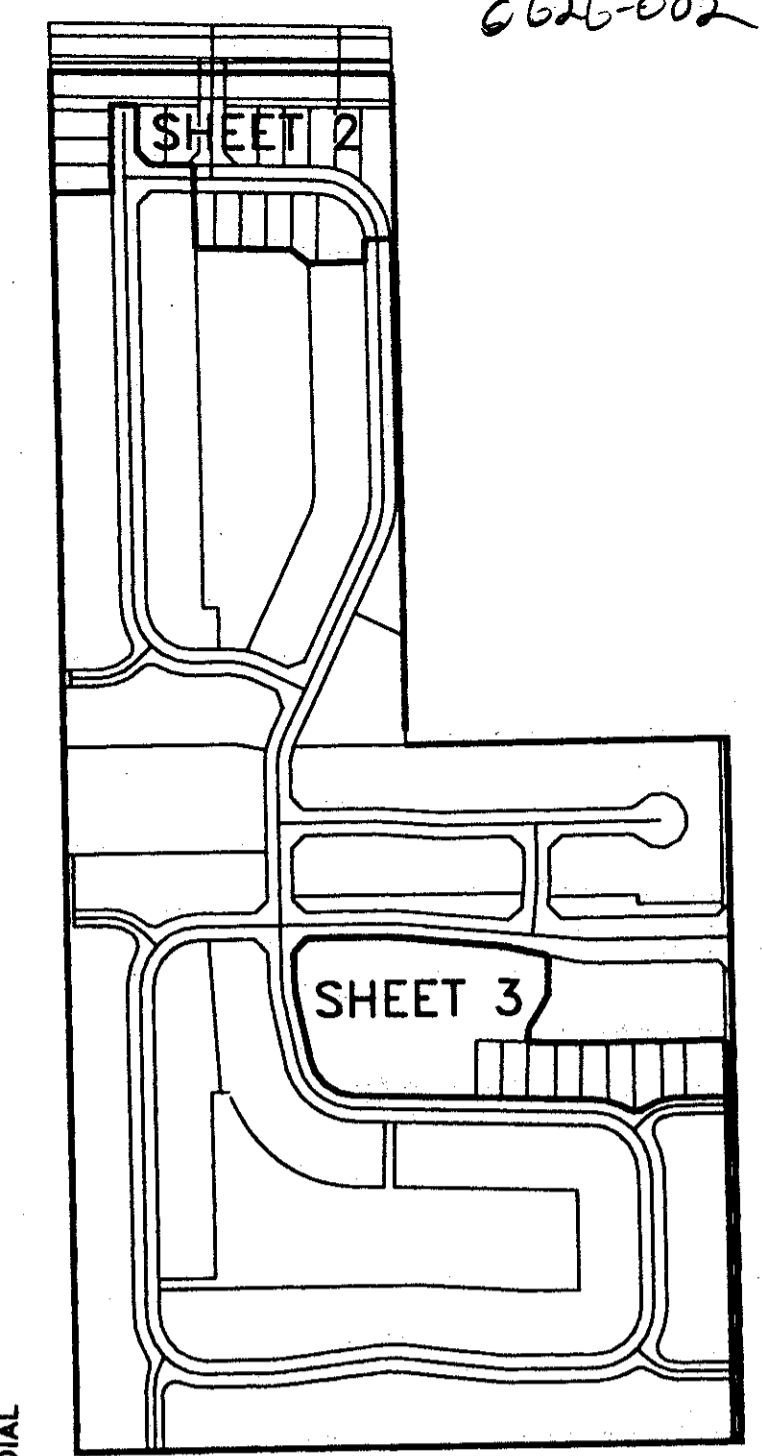


# ROSSMOOR LAKES REPLAT

BEING A REPLAT OF A PORTION OF ROSSMOOR LAKES  
AS RECORDED IN PLAT BOOK 73, PAGES 136 THRU 141,  
PUBLIC RECORDS OF PALM BEACH COUNTY, FLORIDA AND  
LYING IN SECTION 27, TOWNSHIP 45 SOUTH, RANGE 42 EAST,  
PALM BEACH COUNTY, FLORIDA.  
FEBRUARY 1997

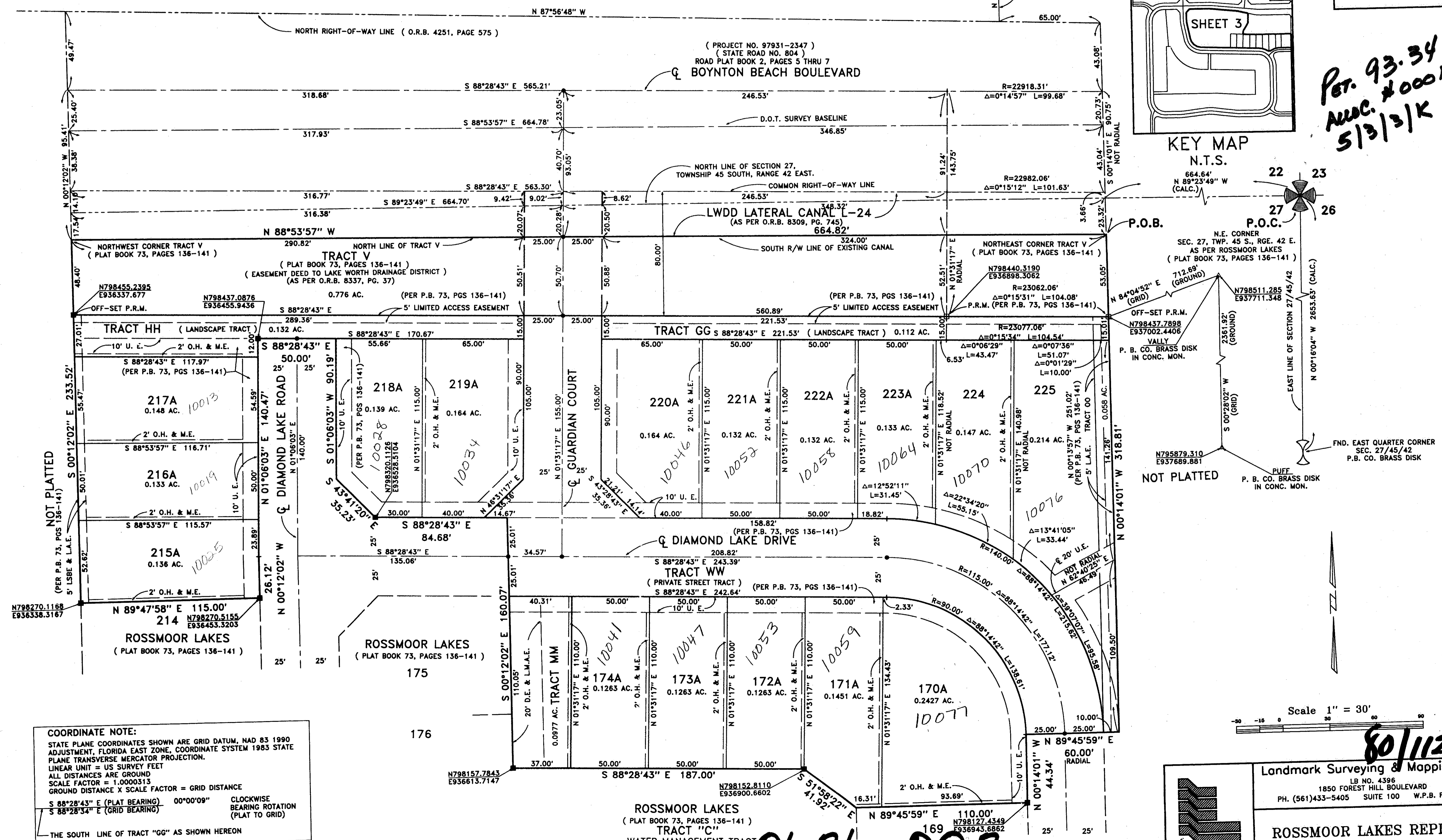
SHEET 2 OF 3

BRIARRIDGE PLAT ONE  
( PLAT BOOK 52, PAGES 57-60 )



STATE OF FLORIDA  
COUNTY OF PALM BEACH ss  
This Plat was filed for record at \_\_\_\_\_  
M. This day of \_\_\_\_\_, 19\_\_\_\_  
and duly recorded in Plat Book No. \_\_\_\_\_  
on Page \_\_\_\_\_  
Dorothy H. Wilken, Clerk of the Circuit Court  
By \_\_\_\_\_ D.C.

*Per. 93.34  
AUC. #000,  
5/3/3/K*



**COORDINATE NOTE:**  
STATE PLANE COORDINATES SHOWN ARE GRID DATUM, NAD 83 1990  
ADJUSTMENT, FLORIDA EAST ZONE, COORDINATE SYSTEM 1983 STATE  
PLANE TRANSVERSE MERCATOR PROJECTION.  
LINEAR UNIT = US SURVEY FEET  
ALL DISTANCES ARE GROUND  
SCALE FACTOR = 1.0000315  
GROUND DISTANCE X SCALE FACTOR = GRID DISTANCE  
S 88°28'43" E (PLAT BEARING) 00°00'09" CLOCKWISE  
S 88°28'34" E (GRID BEARING) BEARING ROTATION  
(PLAT TO GRID)  
THE SOUTH LINE OF TRACT "GG" AS SHOWN HEREON

Scale 1" = 30'

Landmark Surveying & Mapping Inc.  
LB NO. 4396  
1850 FOREST HILL BOULEVARD  
PH. (561) 433-5405 SUITE 100 W.P.B. FLORIDA

**ROSSMOOR LAKES REPLAT**

*0626-002*

SUBDIVISION OF ROSSMOOR LAKES  
REPLAT  
PAGE 112  
FLOOD ZONE 6  
ZONING R-1  
2ND CORRECTION