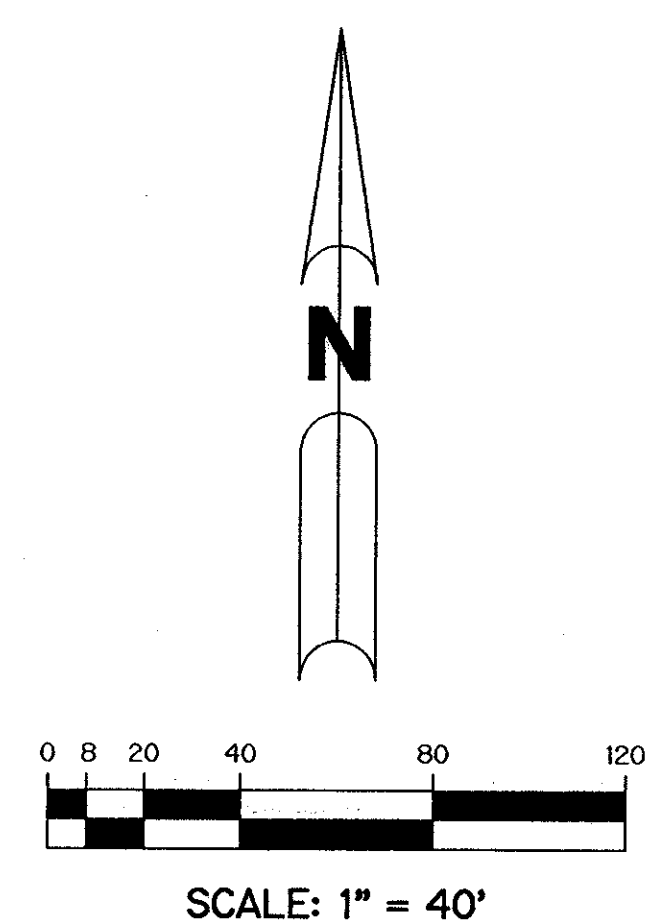


KEY MAP  
N.T.S.

# ADDISON TRACE P.U.D.

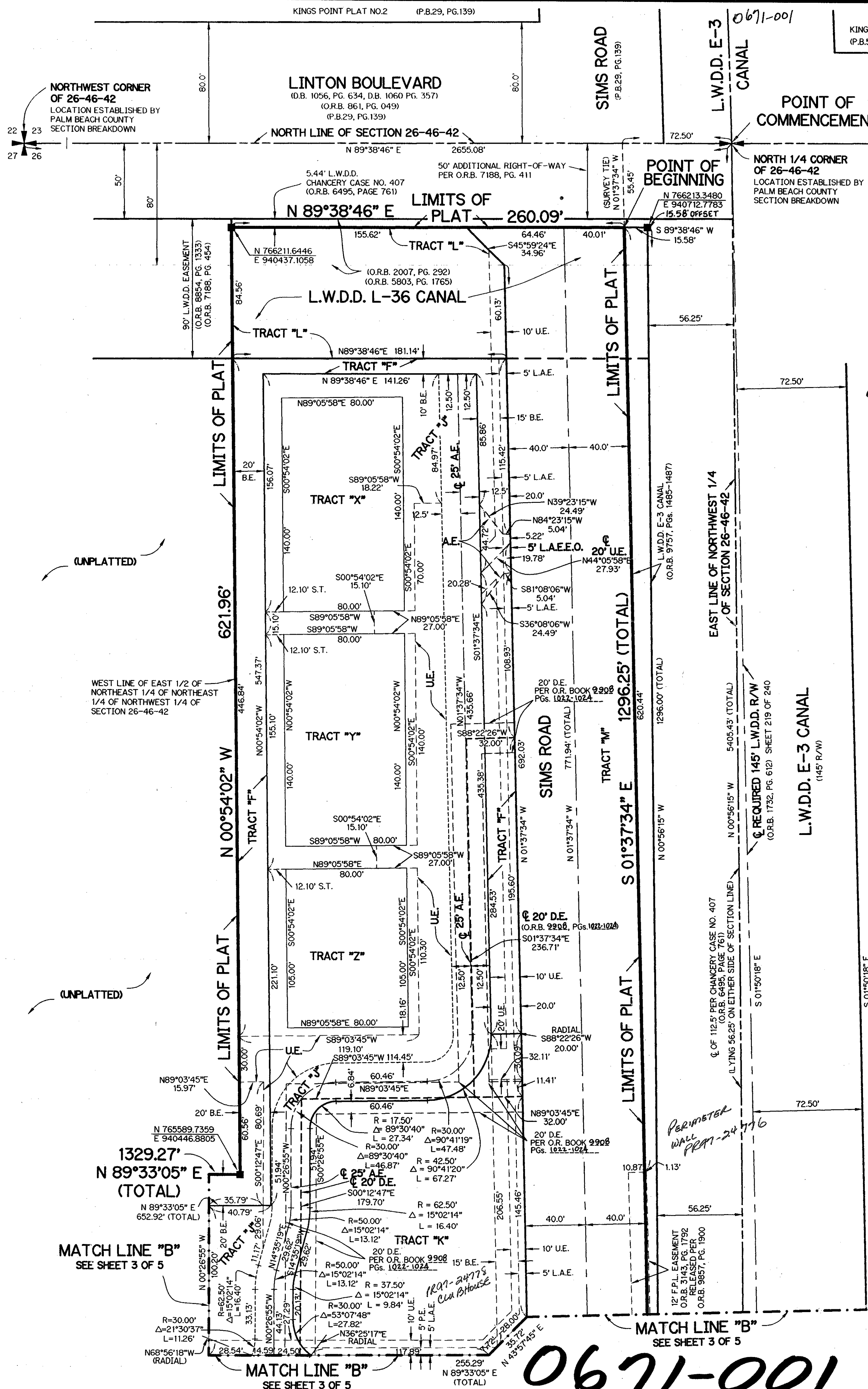
A PLANNED UNIT DEVELOPMENT  
A PART OF THE LINTON P.U.D.  
A PARCEL OF LAND LYING IN SECTION 26,  
TOWNSHIP 46 SOUTH, RANGE 42 EAST,  
PALM BEACH COUNTY, FLORIDA.  
SHEET 5 OF 5 NOVEMBER, 1996

THIS INSTRUMENT PREPARED BY  
PERRY C. WHITE, P.S.M. 4213, STATE OF FLORIDA  
LAWSON, NOBLE AND WEBB, INC.  
ENGINEERS PLANNERS SURVEYORS  
WEST PALM BEACH, FLORIDA



**NOTE:**  
COORDINATES SHOWN ARE GRID COORDINATES  
DATUM = NAD 83 (1990 ADJUSTMENT)  
ZONE = FLORIDA EAST ZONE  
LINEAR UNIT = U.S. SURVEY FEET  
COORDINATE SYSTEM 1983 STATE PLANE  
TRANSVERSE MERCATOR PROJECTION  
ALL DISTANCES ARE GROUND  
SCALE FACTOR = 1.000034  
PLAT BEARING = GRID BEARING (NO ROTATION)

- LEGEND:**
- - PERMANENT REFERENCE MONUMENT, PLS #4213
  - - PERMANENT CONTROL POINT, PLS #4213
  - △ - DELTA ANGLE
  - A.E. - ACCESS EASEMENT
  - B.E. - BUFFER EASEMENT
  - ☉ - CENTERLINE
  - D.E. - DRAINAGE EASEMENT
  - L - ARC LENGTH
  - L.A.E. - LIMITED ACCESS EASEMENT
  - L.A.E.O. - LIMITED ACCESS EASEMENT, EXIT ONLY
  - L.M.A.E. - LAKE MAINTENANCE ACCESS EASEMENT
  - L.M.E. - LAKE MAINTENANCE EASEMENT
  - L.W.D.D. - LAKE WORTH DRAINAGE DISTRICT
  - N.R. - NOT RADIAL
  - N.T. - NOT TANGENT
  - N.T.S. - NOT TO SCALE
  - O.E. - OVERHANG EASEMENT
  - O.R.B. - OFFICIAL RECORD BOOK
  - O.S. - OPEN SPACE
  - P.B. - PLAT BOOK
  - PGS. - PAGES
  - PLS - PROFESSIONAL LAND SURVEYOR
  - P.S.M. - PROFESSIONAL SURVEYOR AND MAPPER
  - P.U.D. - PLANNED UNIT DEVELOPMENT
  - R - RADIUS
  - R/W - RIGHT-OF-WAY
  - S.T. - SURVEY TIE
  - U.E. - UTILITY EASEMENT
  - P.E. - PEDESTRIAN EASEMENT
  - F.E. - FLOWAGE EASEMENT
  - N 737648.0171  
E 905258.2326 - DENOTES STATE PLANE COORDINATES



*Pet. 94-12  
5/3/3/K*

HILLHAVEN  
CONVALESCENT  
(UNPLATTED)

SUBDIVISION # ADDISON TRACE  
 BOOK 130  
 FLOOD MAP #2008  
 ZONING PUD  
 QUAD 31  
 SE 1  
 PLD #4446

0671-001

80/130  
SHEET 5 OF 5

130