

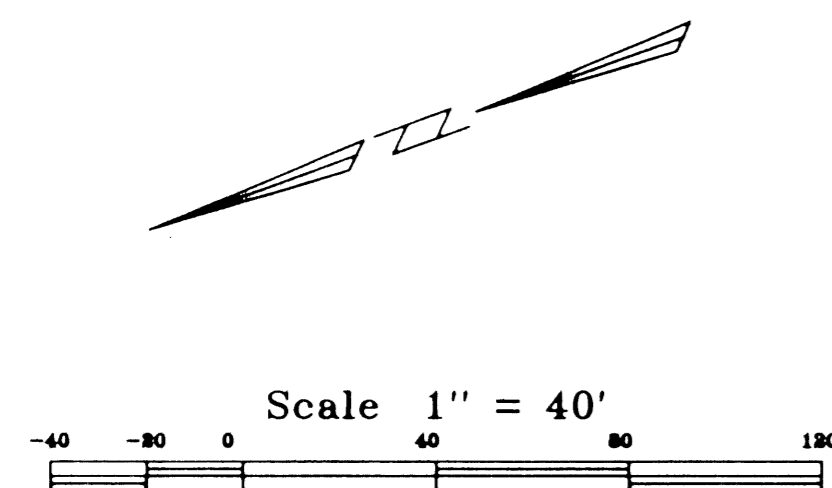
LAKEFIELD OF THE LANDINGS AT WELLINGTON P.U.D. PLAT 2A REPLAT

135

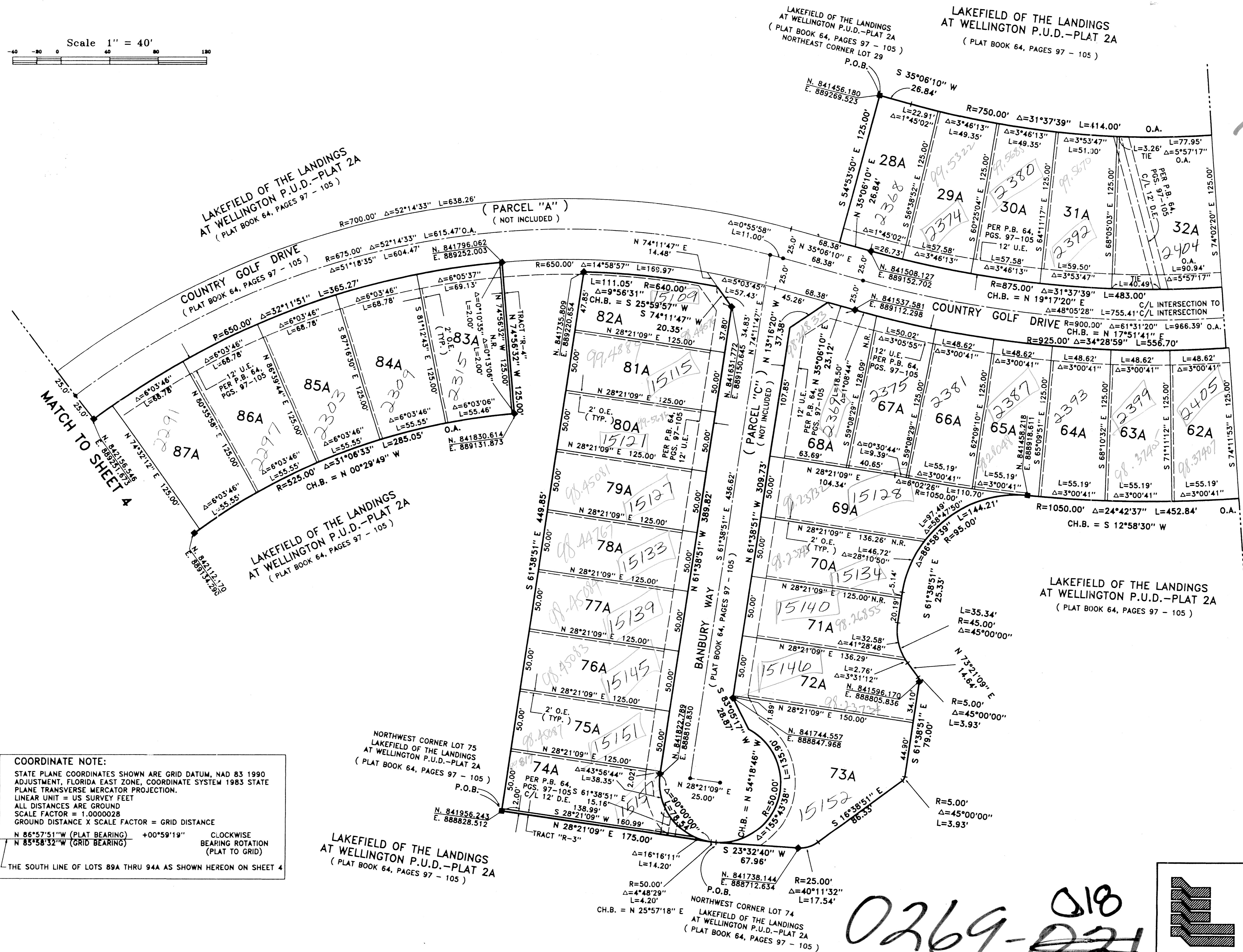
BEING A REPLAT OF A PORTION OF LAKEFIELD OF THE LANDINGS AT WELLINGTON P.U.D. PLAT 2A, AS RECORDED IN PLAT BOOK 64, PAGES 97 THRU 105, PUBLIC RECORDS OF PALM BEACH COUNTY, FLORIDA AND LYING IN PART OF SECTION 7 AND 18 TOWNSHIP 44 SOUTH, RANGE 41 EAST
 SHEET 5 OF 6 MARCH, 1997

VILLAGE OF WELLINGTON
 14000 GREENBRIAR BLVD.
 WELLINGTON, FLORIDA 33414
 (561) 791-4000

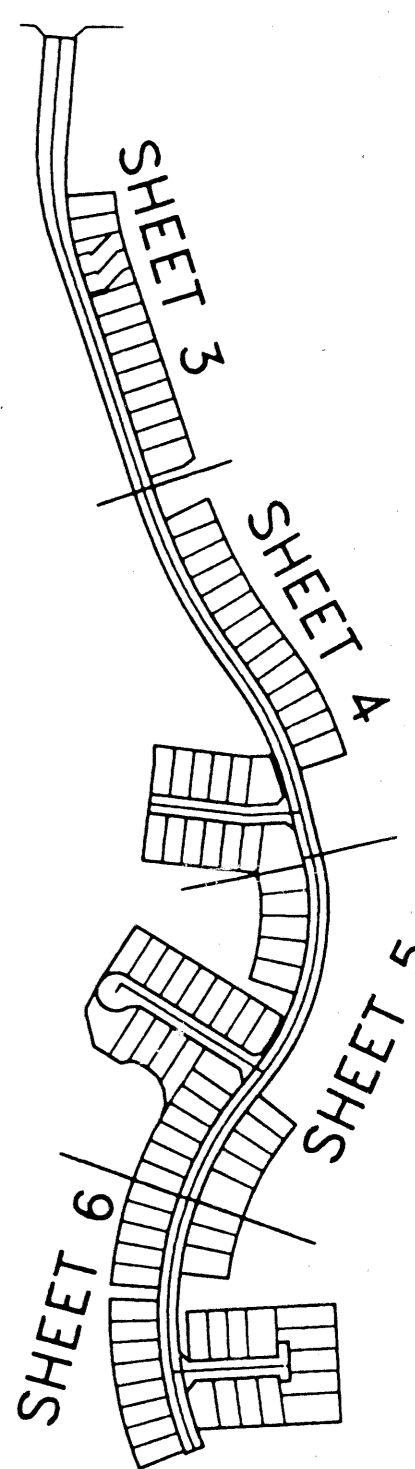
STATE OF FLORIDA
 COUNTY OF PALM BEACH SS
 This Plat was filed for record at _____
 M. This day of _____, 19____
 and duly recorded in Plat Book No. _____
 on Page _____
 Dorothy H. Wilken, Clerk of the Circuit Court
 By _____ D.C.



Scale 1" = 40'



*Per. 78-287
 Avoc. #0001
 5/2/4/G*



MATCH TO SHEET 6

KEY MAP NOT TO SCALE

COORDINATE NOTE:
 STATE PLANE COORDINATES SHOWN ARE GRID DATUM, NAD 83 1990 ADJUSTMENT, FLORIDA EAST ZONE, COORDINATE SYSTEM 1983 STATE PLANE, TRANSVERSE MERCATOR PROJECTION.
 LINEAR UNIT = US SURVEY FEET
 ALL DISTANCES ARE GROUND
 SCALE FACTOR = 1.0000028
 GROUND DISTANCE X SCALE FACTOR = GRID DISTANCE
 N 86°57'51" W (PLAT BEARING) +00°59'19" CLOCKWISE BEARING ROTATION (PLAT TO GRID)
 N 85°58'32" W (GRID BEARING)

SUBDIVISION *
 BOOK 80
 FLOOD ZONE
 CHAS 9
 SE
 ZIP CODE
 PAGE 135
 FLOOD MAP #/100
 ZONING PL
 100

Landmark Surveying & Mapping Inc.
 1850 FOREST HILL BOULEVARD
 PH. (561) 433-5405 SUITE 100 W.P.B. FLORIDA
LAKEFIELD OF THE LANDINGS AT WELLINGTON P.U.D. PLAT 2A REPLAT

0269-021