

VINTAGE OAKS - REPLAT # 1

BEING A REPLAT OF LOTS 25 AND 26 OF VINTAGE OAKS (A PART OF THE POLO CLUB P. U. D.) PB. 74, PGS 124 - 125
 LYING IN SECTION 26, TOWNSHIP 46 SOUTH, RANGE 42 EAST, PALM BEACH COUNTY, FLORIDA

MAY 1997

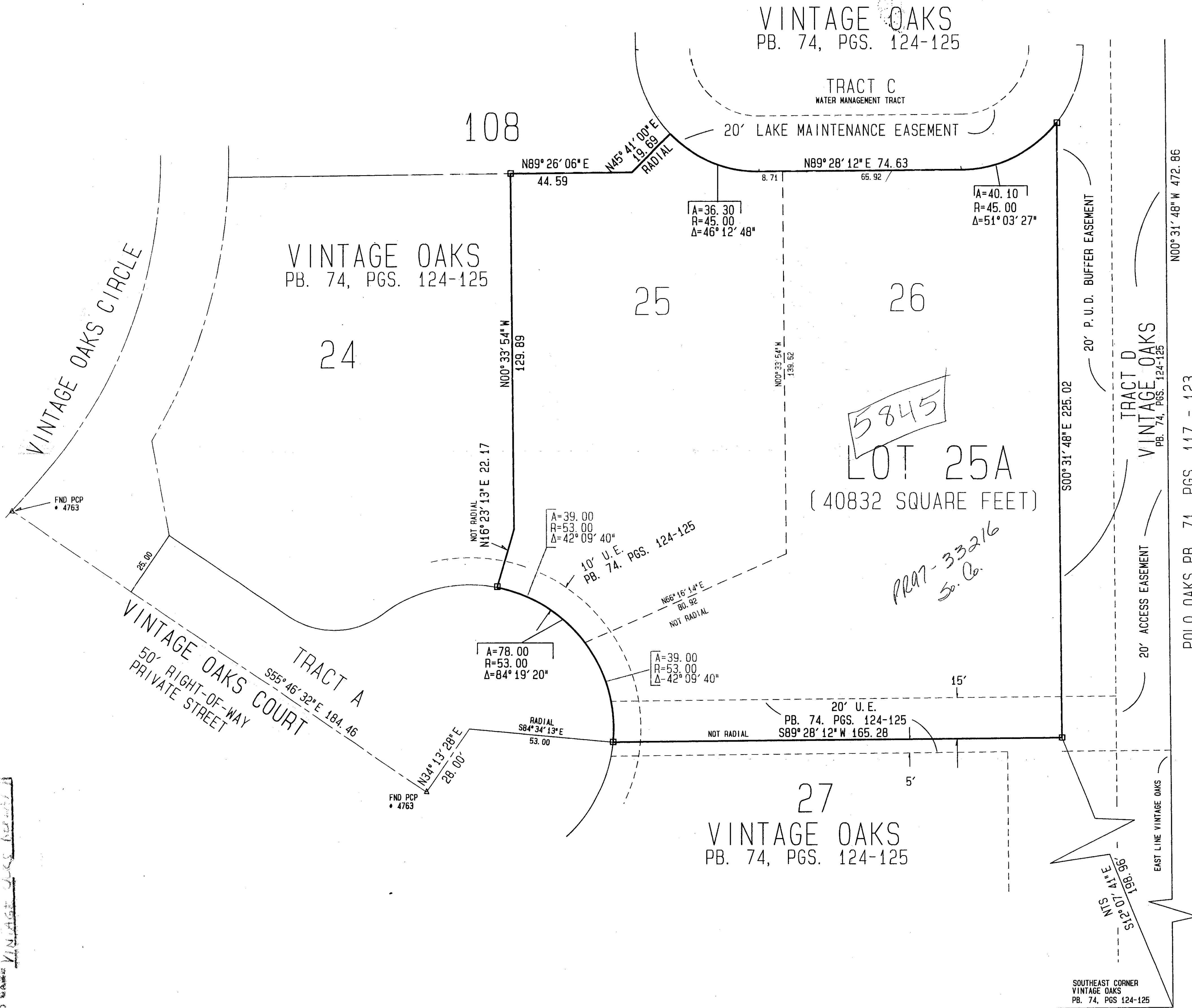
SHEET 2 OF 2

0436-050

177

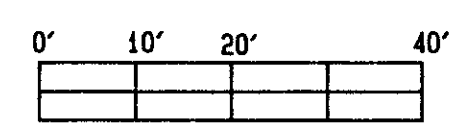
STATE OF FLORIDA }
 COUNTY OF PALM BEACH } SS
 THIS PLAT WAS FILED FOR
 RECORD AT _____
 THIS _____ DAY OF _____
 A.D. 1997 AND
 DULY RECORDED IN PLAT BOOK
 _____ ON PAGES _____ AND

 DOROTHY WILKEN, CLERK
 CIRCUIT COURT.
 BY: _____ DC



*PET. 84-71
 AWC. #0001
 5/3/3/K*

- LEGEND
- D. E. DRAINAGE EASEMENT
 - U. E. UTILITY EASEMENT
 - M. E. MAINTENANCE EASEMENT
 - ORB. OFFICIAL RECORDS BOOK
 - PB. PLAT BOOK
 - PG(S). PAGE OR PAGES
 - PK PARKER KALON NAIL
 - FND FOUND
 - PCP PERMANENT CONTROL POINT
 - PRM PERMANENT REFERENCE MONUMENT
 - PLS PROFESSIONAL LAND SURVEYOR
 - IRSC IRON ROD AND CAP
 - IPRC IRON PIPE AND CAP
 - CONC. CONCRETE
 - LB LICENSED BUSINESS
 - NUMBER
 - MON MONUMENT
 - SBT SOUTHERN BELL
 - FPL FLORIDA POWER AND LIGHT
 - MH MAN HOLE
 - CATV CABLE TELEVISION
 - PLAT
 - M MEASURE
 - PC POINT OF CURVATURE
 - CLM PERMANENT REFERENCE MONUMENT SET PLS 4392
 - LLWD LAKE WORTH DRAINAGE DISTRICT
 - P. U. D. PLANNED URBAN DEVELOPMENT
 - A ARC LENGTH
 - R RADIUS
 - Δ DELTA OR CENTRAL ANGLE
 - MEAS. MEASURE
 - NTS NOT TO SCALE



- SURVEYOR'S NOTES
1. ALL BEARINGS SHOWN HEREON REFER TO AN ASSUMED BEARING ON THE EASTERLY LINE OF THE PLAT OF VINTAGE OAKS, AS RECORDED IN PLAT BOOK 74 PAGES 124 THROUGH 125 OF THE PUBLIC RECORDS OF PALM BEACH COUNTY, FLORIDA. SAID LINE BEARS NORTH 00°31'48" WEST.
 2. THERE MAY BE ADDITIONAL RESTRICTIONS THAT ARE NOT RECORDED ON THIS PLAT THAT MAY BE FOUND IN THE PUBLIC RECORDS OF THIS COUNTY.
 3. LINES THAT INTERSECT CURVES ARE RADIAL UNLESS OTHERWISE NOTED.
 4. WHERE UTILITY AND DRAINAGE EASEMENTS INTERSECT, DRAINAGE EASEMENTS WILL TAKE PRECEDENCE.
 5. BUILDING SETBACK LINES SHALL BE AS APPROVED BY PALM BEACH COUNTY, FLORIDA.
 6. NO BUILDINGS OR ANY KIND OF CONSTRUCTION OR TREES OR SHRUBS SHALL BE PLACED ON ANY EASEMENT WITHOUT THE PRIOR WRITTEN CONSENT OF ALL EASEMENT BENEFICIARIES AND ALL APPLICABLE COUNTY APPROVALS OR PERMITS AS REQUIRED FOR SUCH ENCROACHMENT.
 7. NO ABOVE GROUND UTILITY FACILITIES SHALL BE PLACED WITHIN ANY PORTION OF A UTILITY EASEMENT WHICH COINCIDES WITH A LAKE MAINTENANCE EASEMENT.
 8. EASEMENTS ARE FOR PUBLIC UTILITIES UNLESS OTHERWISE NOTED. THERE SHALL BE NO CONSTRUCTION OF ANY KIND, TREES OR SHRUBS PLACED ON EASEMENTS WITHOUT THE PERMISSION OF THE OCCUPYING UTILITIES.

*PET. 84-71
 TRACT R
 POLO CLUB PUD*

80/178

KESHAVARZ & ASSOCIATES, INC.
 THIS INSTRUMENT WAS PREPARED BY CHARLES H. ANDERSON
 IN THE OFFICES OF KESHAVARZ & ASSOCIATES, INC.
 1220 N. CONGRESS AVENUE, SUITE 206
 WEST PALM BEACH, FLORIDA 33409
 (561) 689-8600 / FAX 689-7476

SUBDIVISION # VINTAGE OAKS
 BOOK 80 PAGE 177
 FLOOD ZONE 0
 QUAD # 37
 RE 87-18
 ZIP CODE 33405

0436-050