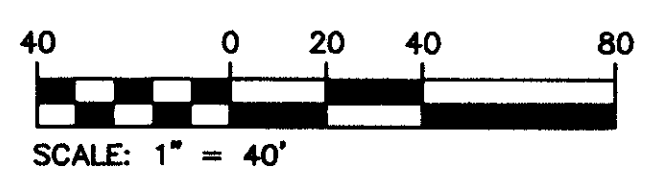


NORTH OAKS P.U.D.

IN PART OF SECTION 27, TOWNSHIP 46 SOUTH, RANGE 42 EAST
PALM BEACH COUNTY, FLORIDA
SHEET NO. 3 OF 5

"ADDISON RESERVE PLAT ONE"
PLAT BOOK 75, PAGE 143

GEE & JENSON
ENGINEERS - ARCHITECTS - PLANNERS, INC.
WEST PALM BEACH, FLORIDA
NOVEMBER 1996



GEODETIC POINT "KING"
N89°24'04"E 2619.92'
PALM BEACH COUNTY POSITION
NORTH (Y) = 766,284.577
EAST (X) = 932,749.731

GEODETIC POINT "DAKOTA"
NORTH (Y) = 766,311.957
EAST (X) = 935,369.590

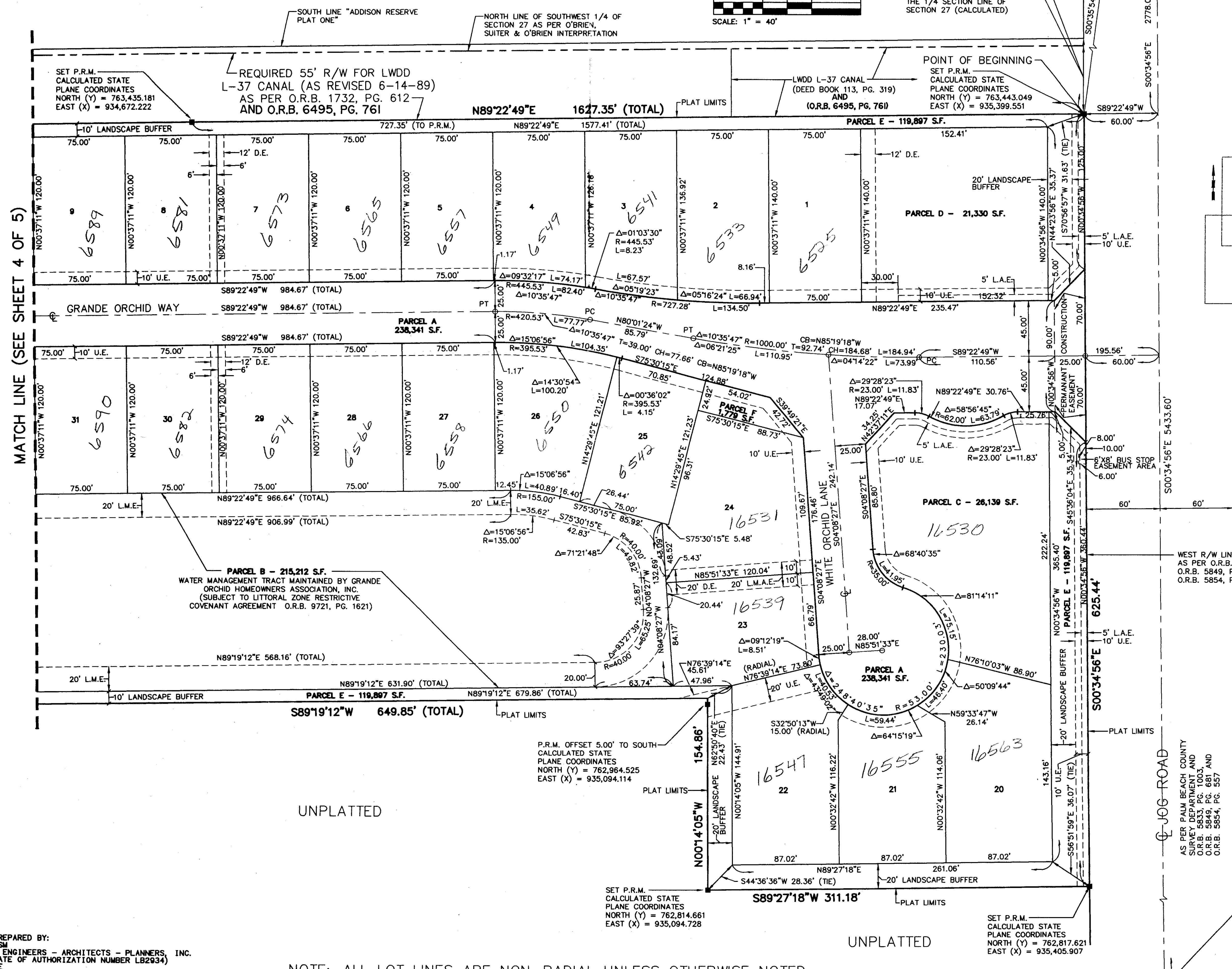
POINT OF COMMENCEMENT
NORTHEAST CORNER OF WEST
ONE-HALF OF SECTION 27

FOUND NAIL AND DISK
STAMPED "MOCK, ROOS"
S45°05'22"E 0.05'

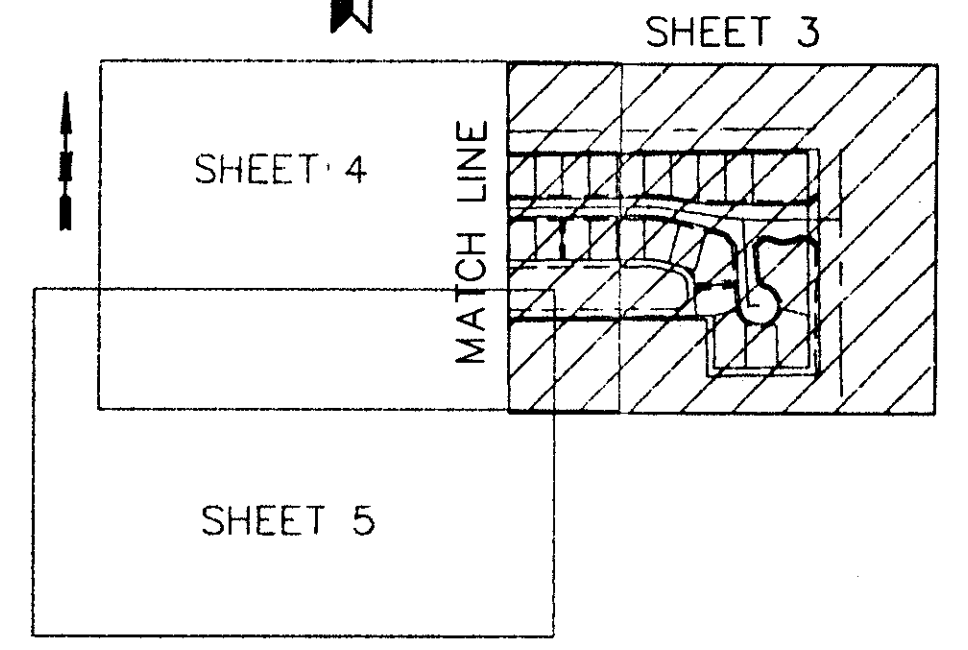
PALM BEACH COUNTY POSITION
NORTH (Y) = 766,221.691
EAST (X) = 935,431.321

189

STATE OF FLORIDA
COUNTY OF PALM BEACH
This plat was filed for
record at _____ M. this day
of _____ 1997, and duly
recorded in Plat Book No.
on Pages _____ thru _____
DOROTHY H. WILKEN
Clerk Circuit Court
By _____ D.C.



MATCH LINE (SEE SHEET 4 OF 5)



SHEET INDEX
NOT TO SCALE

"THE POLO CLUB
EQUESTRIAN CENTER"
PLAT BOOK 61, PAGE 166

WEST R/W LINE OF JOG ROAD
AS PER O.R.B. 5833, PG. 1003,
O.R.B. 5849, PG. 681 AND
O.R.B. 5854, PG. 557

AS PER PALM BEACH COUNTY
SPLIT PLAT AND
O.R.B. 5833, PG. 1003 AND
O.R.B. 5849, PG. 681 AND
O.R.B. 5854, PG. 557

SOUTHEAST CORNER OF WEST
ONE-HALF OF SECTION 27
PALM BEACH } NORTH (Y) = 760,788.209
COUNTY POSITION } EAST (X) = 935,486.534

SUBDIVISION * NORTH OAKS
BOOK 80 PAGE 189
FLOOD ZONE F FLOOD MAP # D154
QUAD # 37 ZONING R0D
SE - ZIP CODE 33496
PUD NAME NORTH OAKS

COMPUTED	B.C. - M.H.
DRAWN	CADD
CHECKED	
APPROVED	
JOB NO.	96-212

THIS INSTRUMENT PREPARED BY:
JAMES A. DAVIS, PSM
FOR GEE & JENSON, ENGINEERS - ARCHITECTS - PLANNERS, INC.
(FLORIDA CERTIFICATE OF AUTHORIZATION NUMBER LB2934)
ONE HARVARD CIRCLE
WEST PALM BEACH, FLORIDA 33409-1923

NOTE: ALL LOT LINES ARE NON-RADIAL UNLESS OTHERWISE NOTED.

Last Update: 3/13/1997 Plotted: 4/24/1997 10:30 am Plot Scale: 1=60.0 Xref Dwg's