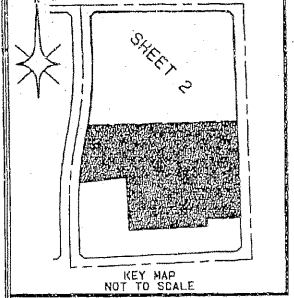


# REPLAT OF BOYNTON COMMONS P.C.D.

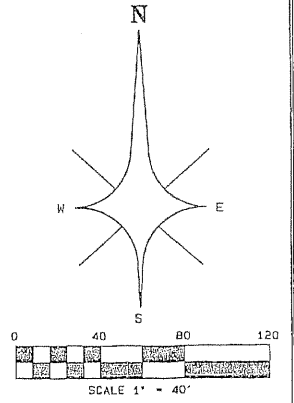
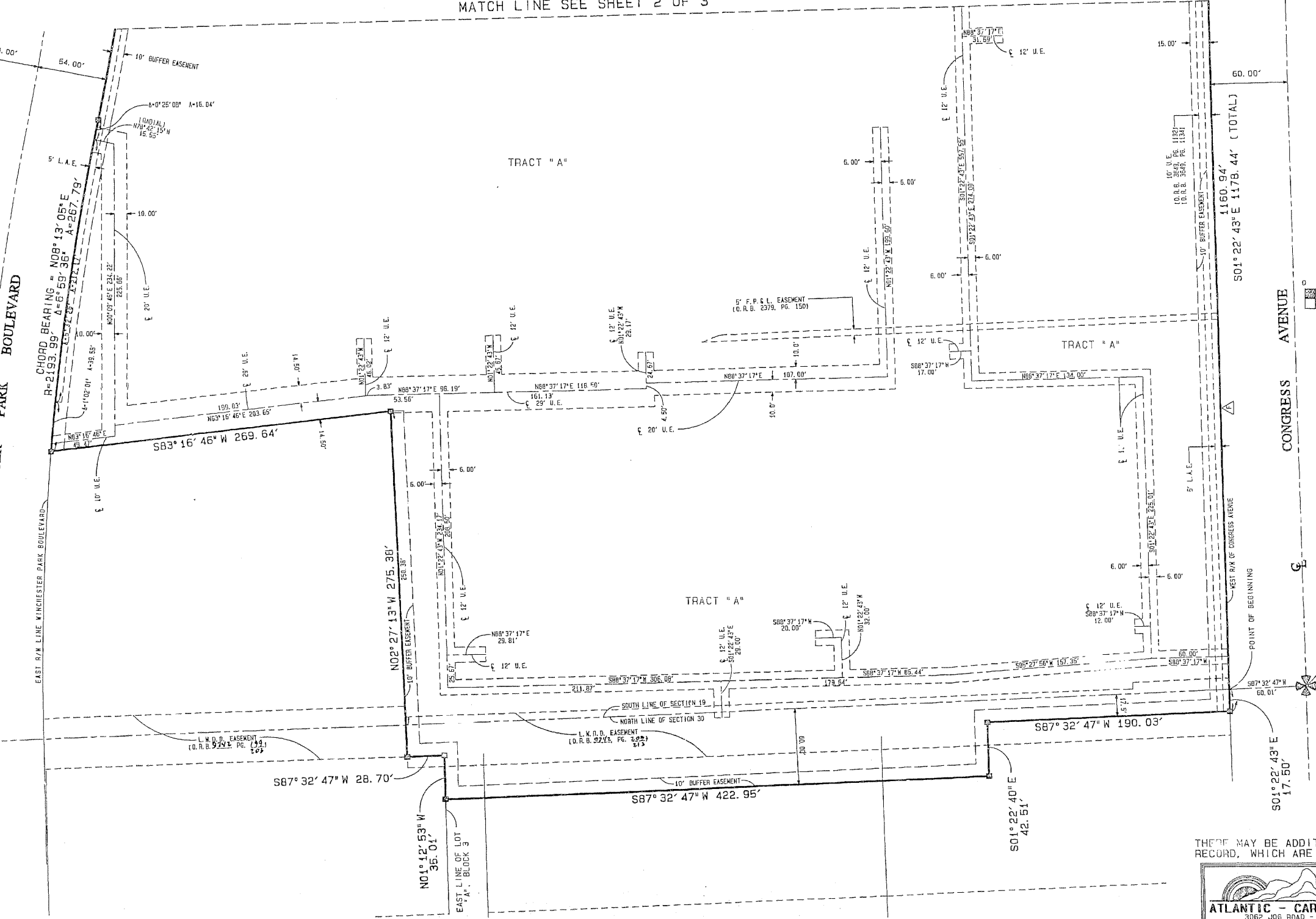
A PLANNED COMMERCIAL DEVELOPMENT SITUATE IN SECTIONS 19 AND 30, TOWNSHIP 45 SOUTH, RANGE 43 EAST BEING A REPLAT OF "BOYNTON COMMONS P.C.D.", AS RECORDED IN PLAT BOOK 80 PAGES 14 THROUGH 16, OF THE PUBLIC RECORDS OF PALM BEACH COUNTY, FLORIDA.  
CITY OF BOYNTON BEACH,  
PALM BEACH COUNTY, FLORIDA  
JULY, 1997

STATE OF FLORIDA } SS  
COUNTY OF PALM BEACH }  
THIS PLAT WAS FILED FOR  
RECORD AT \_\_\_\_\_ DAY OF  
THIS \_\_\_\_\_ AD. 1997 AND  
DULY RECORDED IN PLAT BOOK  
\_\_\_\_\_ ON PAGES \_\_\_\_\_ AND  
\_\_\_\_\_  
DOROTHY H. WILKEN, CLERK  
CIRCUIT COURT  
BY: \_\_\_\_\_ DC



MATCH LINE SEE SHEET 2 OF 3

- LEGEND:
- A - CENTRAL ANGLE/DELTA
  - C.L. - CENTERLINE
  - CH. - CHORD
  - D.B. - DEED BOOK
  - D.E. - DRAINAGE EASEMENT
  - F.P.S.L. - FLORIDA POWER AND LIGHT COMPANY
  - L. - ARC LENGTH
  - L.A.E. - LIMITED ACCESS EASEMENT
  - L.M.A.E. - LAKE MAINTENANCE ACCESS EASEMENT
  - L.M.E. - LAKE MAINTENANCE EASEMENT
  - L.W.D. - LAKE WORTH DRAINAGE DISTRICT
  - N.R. - NON-RADIAL
  - N.T.S. - NOT TO SCALE
  - O.R.B. - OFFICIAL RECORDS BOOK
  - P.B. - PLAT BOOK
  - P.G. - PAGE
  - P.O.B. - POINT OF BEGINNING
  - P.O.C. - POINT OF COMMENCEMENT
  - R. - RADIUS (RADII)
  - R.F. - RADIAL TO FRONT LOT LINE
  - R.R. - RADIAL TO REAR LOT LINE
  - R/W - RIGHT OF WAY
  - U.E. - UTILITY EASEMENT
  - W.C. - WITNESS CORNER
- - PERMANENT CONTROL POINT (PCP)  
SET PCP #5219
  - - PERMANENT REFERENCE MONUMENT (PRM)  
SET PRM #5219
  - △ - DENOTES FRONT OF PROJECT IN REGARDS  
TO SETBACK REQUIREMENTS OF THE CITY  
OF BOYNTON BEACH, FLORIDA.



THERE MAY BE ADDITIONAL RESTRICTIONS OF RECORD, WHICH ARE NOT SHOWN ON THIS PLAT

PROFESSIONAL SURVEYORS AND MAPPERS

**ATLANTIC - CARIBBEAN MAPPING, INC.**

3062 JOG ROAD - GREENACRES, FLORIDA 33467  
(561) 964-7864; FAX (561) 964-1369