

JONES - PARCEL "A"

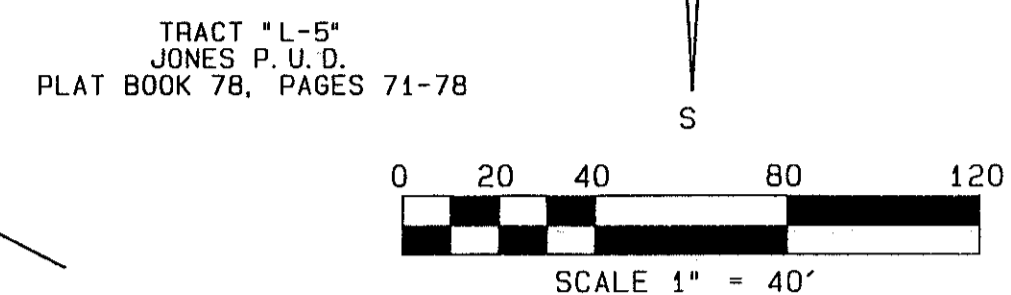
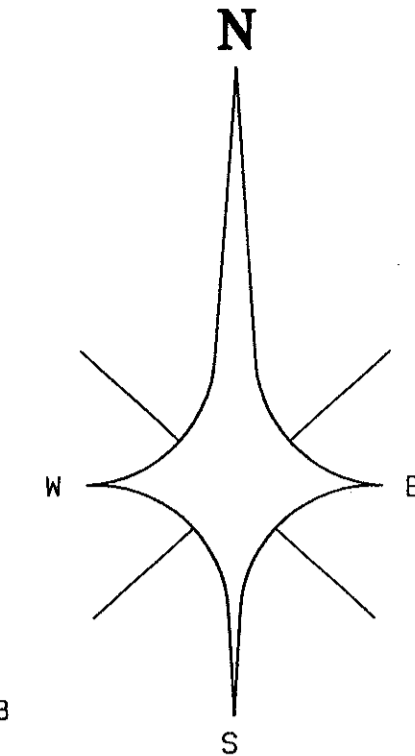
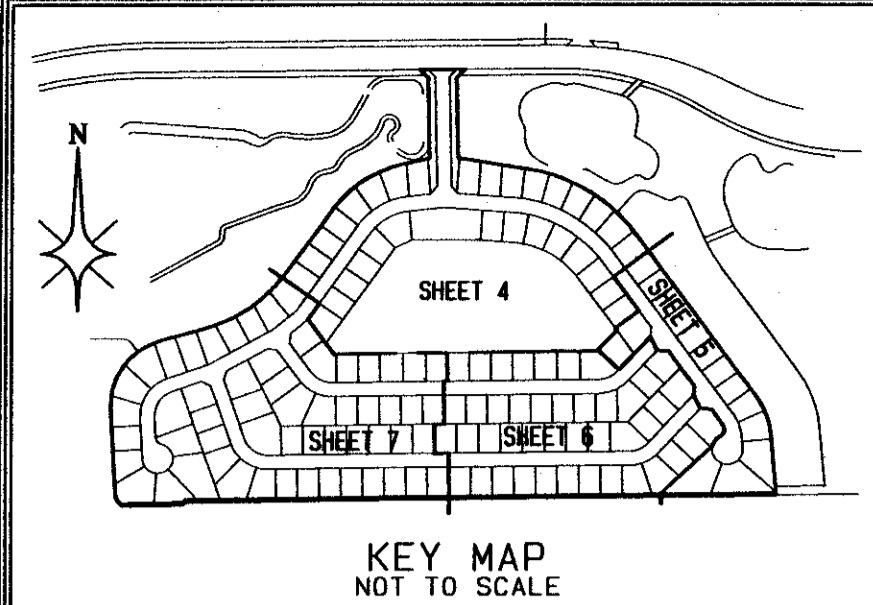
BEING A REPLAT OF PARCEL "A", JONES P.U.D. AS RECORDED IN PLAT BOOK 78, PAGES 71 THROUGH 78 OF THE PUBLIC RECORDS OF PALM BEACH COUNTY, FLORIDA SITUATE IN SECTIONS 33 AND 34, TOWNSHIP 45 SOUTH, RANGE 42 EAST, PALM BEACH COUNTY, FLORIDA

SHEET 4 OF 7

AUGUST, 1997

0683-006

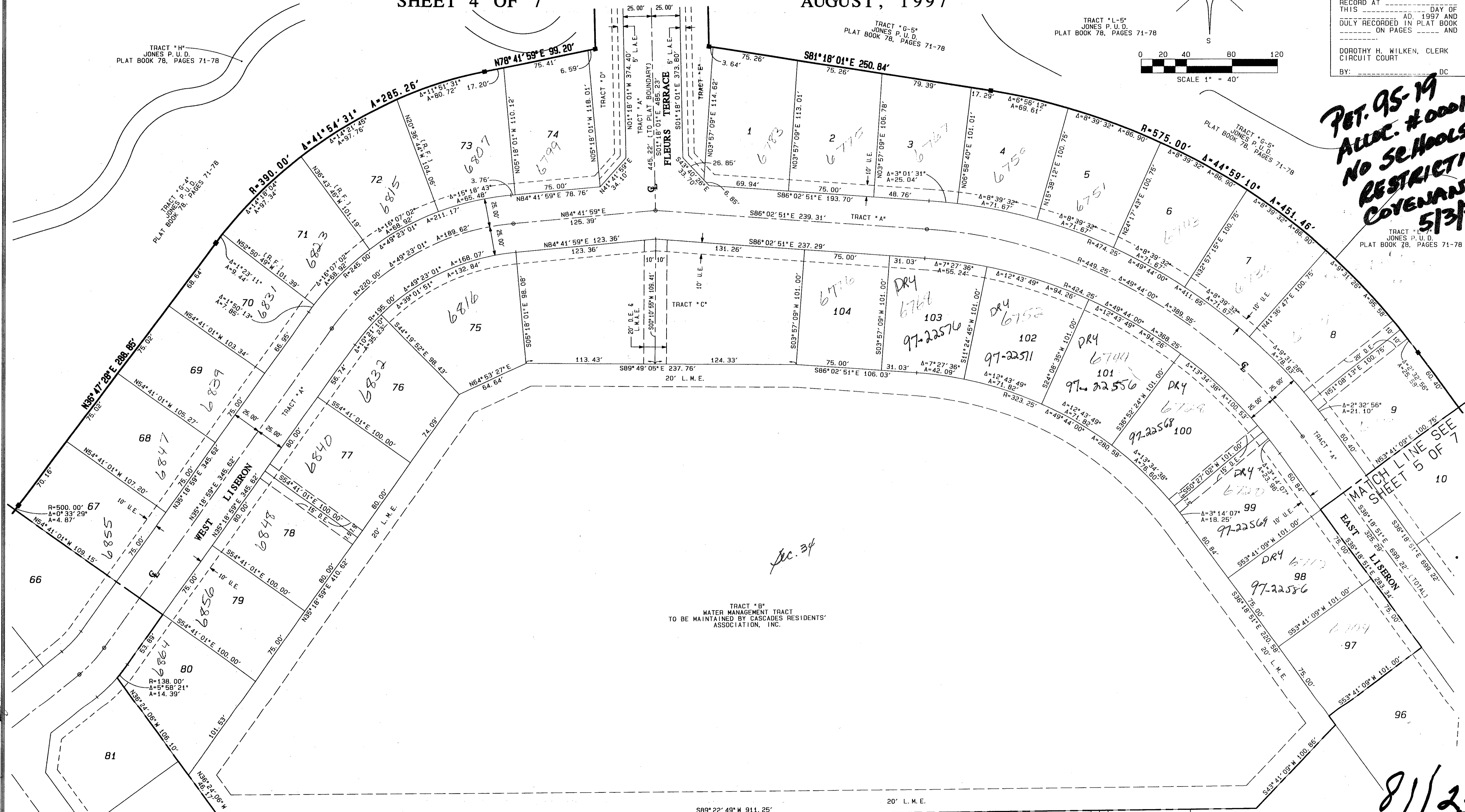
23



STATE OF FLORIDA } SS
 COUNTY OF PALM BEACH }
 THIS PLAT WAS FILED FOR
 RECORD AT _____ DAY OF
 THIS _____ AD 1997 AND
 DULY RECORDED IN PLAT BOOK
 _____ ON PAGES _____ AND

 DOROTHY H. WILKEN, CLERK
 CIRCUIT COURT
 BY: _____ DC

**PET. 95-19
 ALLOC. #0001
 NO SE HOODS-
 RESTRICTIVE
 COVENANT
 5/3/1K**



TRACT "B"
 WATER MANAGEMENT TRACT
 TO BE MAINTAINED BY CASCADES RESIDENTS'
 ASSOCIATION, INC.

Sec. 34

MATCH LINE SEE SHEET 5
 MATCH LINE SEE SHEET 6
 MATCH LINE SEE SHEET 7

SUBDIVISION * Jones Parcel A
 BOOK 81 PAGE 23
 FLOOD ZONE A1/B FLOOD MAP #2004
 ZONING PDD
 QUAD #50/30
 ZIP CODE 33437
 PUD NAME Jones Parcel A

MATCH LINE SEE SHEET 7 OF 7

MATCH LINE SEE SHEET 6 OF 7

82 83 84 85 86 87 88 89 90 91 92 93

0683-006

PROFESSIONAL SURVEYORS AND MAPPERS
ATLANTIC - CARIBBEAN MAPPING, INC.
 3062 JOG ROAD - GREENACRES, FLORIDA 33467
 (561) 964-7884; FAX (561) 964-1969

8/1/23