

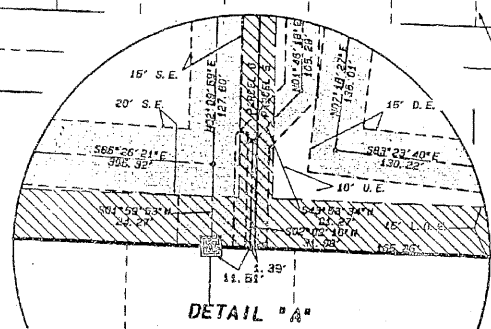
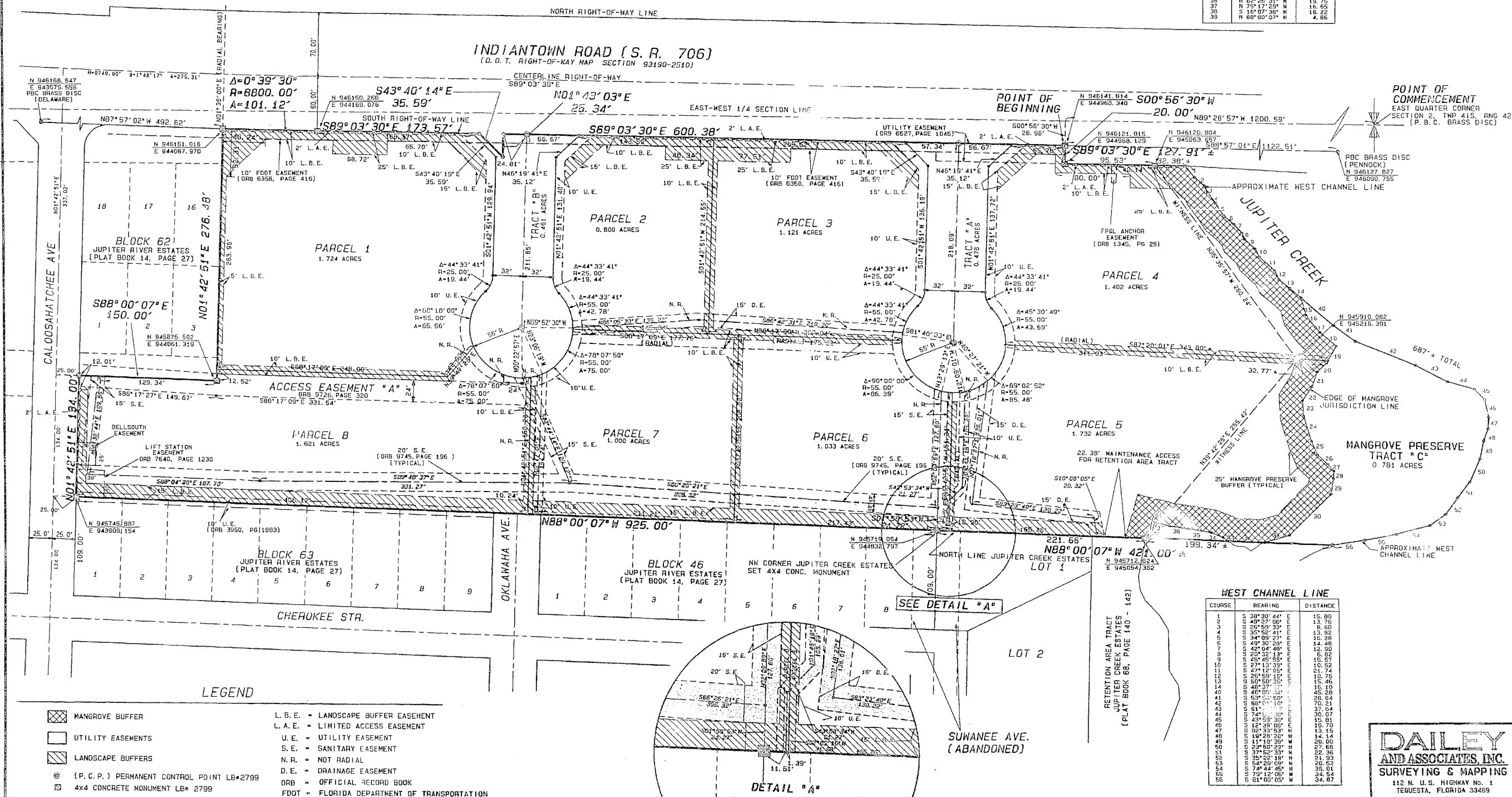
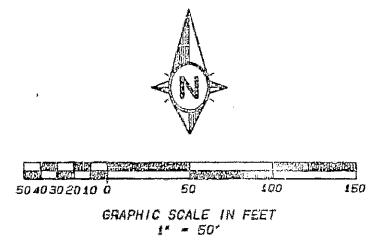
JUPITER CREEK COMMERCIAL

LYING IN SECTION 2, TOWNSHIP 41 SOUTH, RANGE 42 EAST, PALM BEACH COUNTY, FLORIDA
 AND BEING A REPLAT OF ALL OF BLOCK 47, LOTS 9 THROUGH 16, BLOCK 46,
 LOTS 10 THROUGH 18, BLOCK 63, LOTS 4 THROUGH 15, BLOCK 62,
 A PART OF BLOCKS 6, 7, 95 AND A PART OF THE ABANDONED RIGHTS-OF-WAY OF SUWANEE AVENUE,
 WEST RIVER DRIVE, CENTRAL DIXIE HIGHWAY, CREEK STREET AND OKLAWAHA AVENUE,
 ACCORDING TO THE PLAT OF JUPITER RIVER ESTATES, AS RECORDED IN PLAT BOOK 14,
 PAGE 27, PALM BEACH COUNTY, FLORIDA PUBLIC RECORDS

JUNE, 1997
 SHEET 2 OF 2

THIS INSTRUMENT WAS PREPARED BY DAN H. DAILEY, P. S. R.
 DAILEY AND ASSOCIATES, INC., 112 N. U.S. HWY. ONE
 TEQUESTA, FLORIDA 33469

JURISDICTIONAL LINE		
COURSE	BEARING	DISTANCE
1	S 28° 27' 44" E	15.89
2	S 43° 27' 06" E	13.76
3	S 25° 59' 33" E	8.60
4	S 35° 23' 41" E	13.30
5	S 34° 03' 27" E	14.40
6	S 42° 04' 40" E	12.90
7	S 40° 30' 28" E	14.40
8	S 40° 04' 40" E	12.90
9	S 40° 04' 40" E	12.90
10	S 27° 13' 39" E	10.52
11	S 47° 12' 05" E	11.74
12	S 25° 58' 16" E	10.75
13	S 49° 30' 28" E	14.40
14	S 40° 37' 27" E	16.10
15	S 40° 37' 27" E	16.10
16	S 40° 37' 27" E	16.10
17	S 40° 37' 27" E	16.10
18	S 40° 37' 27" E	16.10
19	S 40° 37' 27" E	16.10
20	S 40° 37' 27" E	16.10
21	S 40° 37' 27" E	16.10
22	S 40° 37' 27" E	16.10
23	S 40° 37' 27" E	16.10
24	S 40° 37' 27" E	16.10
25	S 40° 37' 27" E	16.10
26	S 40° 37' 27" E	16.10
27	S 40° 37' 27" E	16.10
28	S 40° 37' 27" E	16.10
29	S 40° 37' 27" E	16.10
30	S 40° 37' 27" E	16.10
31	S 40° 37' 27" E	16.10
32	S 40° 37' 27" E	16.10
33	S 40° 37' 27" E	16.10
34	S 40° 37' 27" E	16.10
35	S 40° 37' 27" E	16.10
36	S 40° 37' 27" E	16.10
37	S 40° 37' 27" E	16.10
38	S 40° 37' 27" E	16.10
39	S 40° 37' 27" E	16.10



WEST CHANNEL LINE		
COURSE	BEARING	DISTANCE
1	S 39° 30' 41" E	15.89
2	S 43° 27' 06" E	13.76
3	S 25° 59' 33" E	8.60
4	S 35° 23' 41" E	13.30
5	S 34° 03' 27" E	14.40
6	S 42° 04' 40" E	12.90
7	S 40° 30' 28" E	14.40
8	S 40° 04' 40" E	12.90
9	S 40° 04' 40" E	12.90
10	S 27° 13' 39" E	10.52
11	S 47° 12' 05" E	11.74
12	S 25° 58' 16" E	10.75
13	S 49° 30' 28" E	14.40
14	S 40° 37' 27" E	16.10
15	S 40° 37' 27" E	16.10
16	S 40° 37' 27" E	16.10
17	S 40° 37' 27" E	16.10
18	S 40° 37' 27" E	16.10
19	S 40° 37' 27" E	16.10
20	S 40° 37' 27" E	16.10
21	S 40° 37' 27" E	16.10
22	S 40° 37' 27" E	16.10
23	S 40° 37' 27" E	16.10
24	S 40° 37' 27" E	16.10
25	S 40° 37' 27" E	16.10
26	S 40° 37' 27" E	16.10
27	S 40° 37' 27" E	16.10
28	S 40° 37' 27" E	16.10
29	S 40° 37' 27" E	16.10
30	S 40° 37' 27" E	16.10
31	S 40° 37' 27" E	16.10
32	S 40° 37' 27" E	16.10
33	S 40° 37' 27" E	16.10
34	S 40° 37' 27" E	16.10
35	S 40° 37' 27" E	16.10
36	S 40° 37' 27" E	16.10
37	S 40° 37' 27" E	16.10
38	S 40° 37' 27" E	16.10
39	S 40° 37' 27" E	16.10

DAILEY AND ASSOCIATES, INC.
 SURVEYING & MAPPING
 112 N. U.S. HIGHWAY No. 1
 TEQUESTA, FLORIDA 33469
 PHONE: (561) 740-8424