

PLAT OF BALLENISLES POD 25B

A Parcel of land lying in Section 13, Township 42 South, Range 42 East, City of Palm Beach Gardens, Palm Beach County, Florida.

Sheet 2 of 2 June 1997

939.08'
N88°22'54"W
NORTH LINE OF THE SOUTH ONE-HALF OF THE NORTHEAST QUARTER OF THE NORTHWEST QUARTER OF SECTION 13

25' PLANNED COMMUNITY DEVELOPMENT BUFFER

DETAIL "C" NOT TO SCALE

434.77'
S01°45'31"W

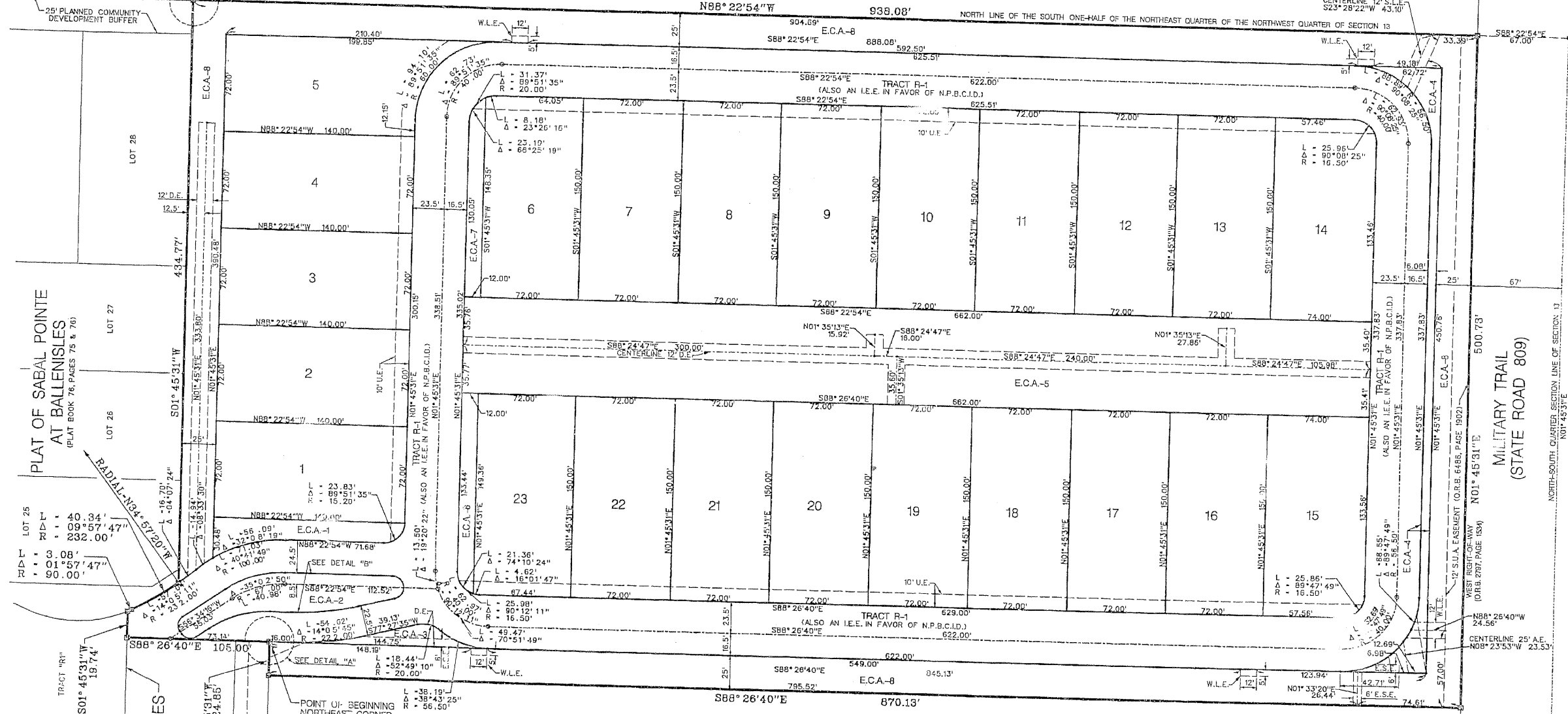
SEE DETAIL "C"

UNPLATTED

N88°22'54"W 939.08' NORTH LINE OF THE SOUTH ONE-HALF OF THE NORTHEAST QUARTER OF THE NORTHWEST QUARTER OF SECTION 13

CENTERLINE 12' S.L.E. S23°28'22"W 43.10'

NORTHEAST CORNER OF THE NORTHWEST QUARTER OF SECTION 13, TOWNSHIP 42 SOUTH, RANGE 42 EAST FOUND PALM BEACH COUNTY BRASS DISK



PLAT OF SABAL POINTE AT BALLENISLES (PLAT BOOK 76, PAGES 75 & 76)

LOT 25
R.D.L. = 40.34'
R.D.L. = 09°57'47"
R.D.L. = 3.08'
R.D.L. = 01°57'47"
R.D.L. = 90.00'

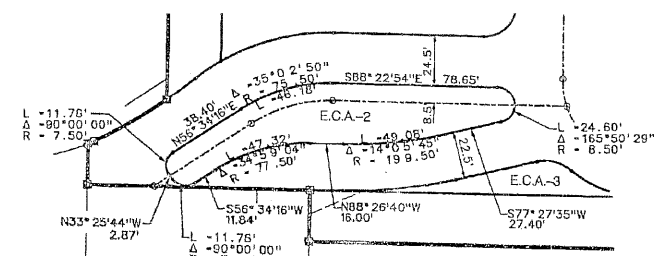
PLAT OF PHASE 4 ROADWAY AT BALLENISLES (PLAT BOOK 74, PAGES 124 & 185)

POINT OF BEGINNING NORTHEAST CORNER OF TRACT E.C.A.-1

POINT OF BEGINNING NORTHEAST CORNER OF TRACT E.C.A.-1

DETAIL "A" NOT TO SCALE

UNPLATTED



DETAIL "B" SCALE: 1"=40'



This instrument was prepared by David C. Lidberg in the offices of Lidberg Land Surveying, Inc. 675 West Indiantown Road, Suite 200 Jupiter, Florida 33458 (407) 746-8454

LIDBERG LAND SURVEYING INC.
 LB4431
 675 West Indiantown Road, Suite 200, Jupiter, Florida 33458 TEL. 561-746-8454

| | | |
|-------------|-----------------|----------------|
| FLD. AM. | JOB 96-649 | FB. 237 Pg. 65 |
| OFF. R.W. | DATE 01/97 | DWG. D96-649 |
| CKD. M.D.E. | REF. 96-649(ms) | SHEET 2 OF 2 |