

WINSTON TRAILS SOUTH

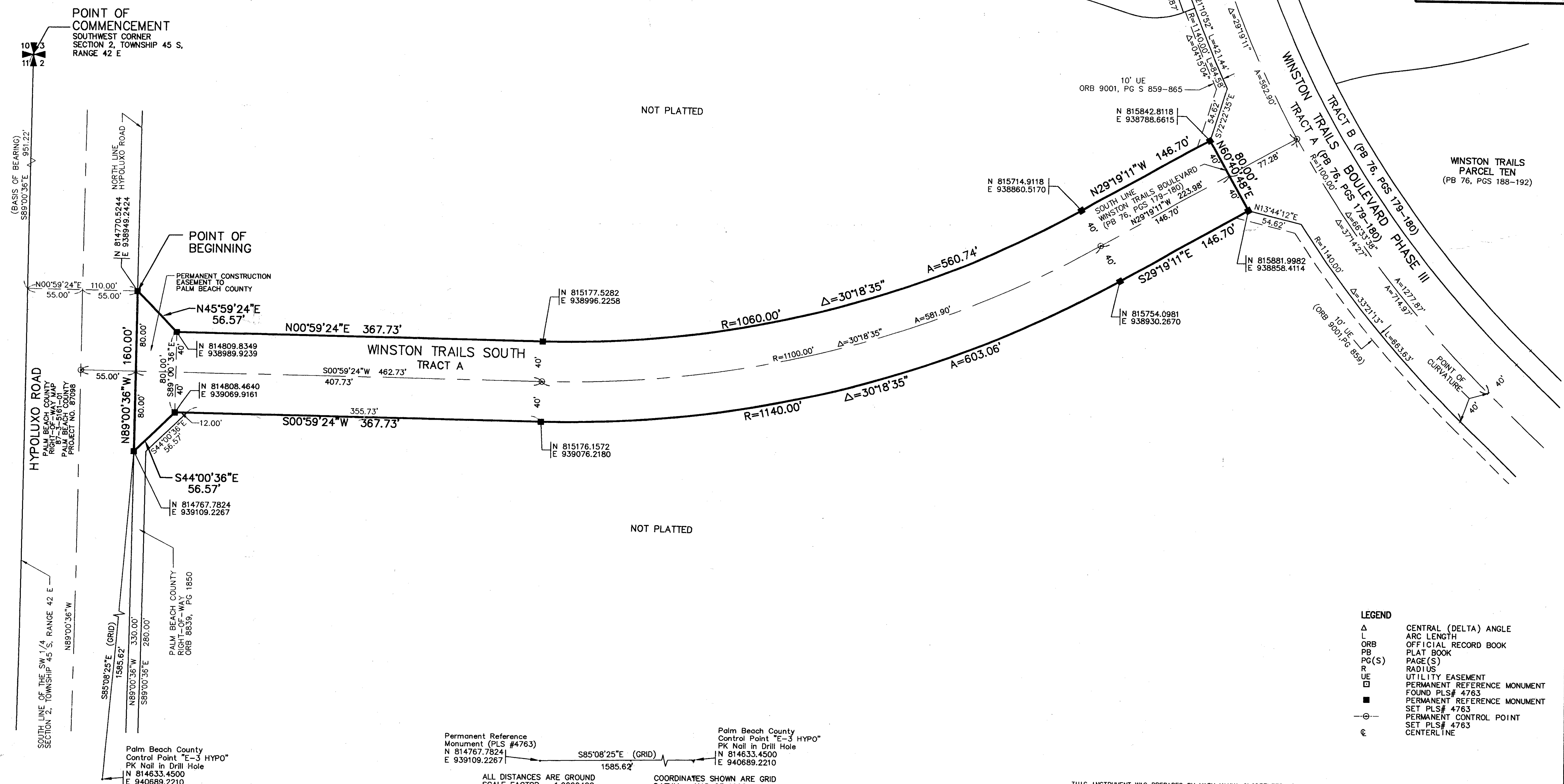
PART OF WINSTON TRAILS P.U.D.
 SITUATE IN SECTION 2, TOWNSHIP 45 SOUTH, RANGE 42 EAST
 PALM BEACH COUNTY, FLORIDA
 APRIL, 1997 SHEET 3 OF 3

0587-019
 GRAPHIC SCALE IN FEET
 0 25 50 75 100

41

STATE OF FLORIDA
 COUNTY OF PALM BEACH
 THIS PLAT WAS FILED FOR
 RECORD THIS DAY OF
 AD, 1997 AND DULY RECORDED
 IN PLAT BOOK ON PAGES
 AND
 DOROTHY H. WILKEN, CLERK
 BY: . D.C.

CIRCUIT COURT SEAL



SUBVISION * WINSTON TRAILS SOUTH
 BOOK FLOOD ZONE ZONING RTSISE
 PAGE 41
 0003 * 34
 057-21
 ZIP CODE

- LEGEND**
- Δ CENTRAL (DELTA) ANGLE
 - L ARC LENGTH
 - ORB OFFICIAL RECORD BOOK
 - PB PLAT BOOK
 - PG(S) PAGE(S)
 - R RADIUS
 - UE UTILITY EASEMENT
 - PERMANENT REFERENCE MONUMENT
 - FOUND PLS# 4763
 - PERMANENT REFERENCE MONUMENT
 - ⊙ SET PLS# 4763
 - ⊙ PERMANENT CONTROL POINT
 - ⊙ SET PLS# 4763
 - ⊙ CENTERLINE

Permanent Reference Monument (PLS #4763)
 N 814767.7824
 E 939109.2267

Palm Beach County Control Point "E-3 HYPO"
 PK Nail in Drill Hole
 N 814633.4500
 E 940689.2210

ALL DISTANCES ARE GROUND
 SCALE FACTOR = 1.0000488

S89°00'36"E (Plat) = 00°00'29" Bearing
 S89°01'05"E (Grid) = Counterclockwise Rotation (Plat to Grid)

South line of the Southwest 1/4 Section 02-45-42 Basis of Bearing

COORDINATES SHOWN ARE GRID
 DATUM = NAD 83 1990 ADJUSTMENT
 ZONE = FLORIDA EAST
 LINEAR UNIT = US SURVEY FEET
 COORDINATE SYSTEM 1983 STATE PLANE
 TRANSVERSE MERCATOR PROJECTION
 GROUND DISTANCE X SCALE FACTOR = GRID

THIS INSTRUMENT WAS PREPARED BY MARY HANNA CLODFELTER, P.L.S. IN THE OFFICES OF MOCK, ROOS & ASSOCIATES, INC., 5720 CORPORATE WAY, WEST PALM BEACH, FLORIDA 33407.

SCALE: 1"=50'
 P.A. NO.: 96154.00
 DATE: OCTOBER 1996
 DRAWING NO.: 45-42-02-54

MOCK ROOS
 ENGINEERS SURVEYORS PLANNERS
 5720 Corporate Way, West Palm Beach, Florida 33407
 (407) 683-3113, fax 478-7248

WINSTON TRAILS SOUTH
 PART OF WINSTON TRAILS P.U.D.
 SITUATE IN SECTION 2, TOWNSHIP 45 SOUTH, RANGE 42 EAST
 PALM BEACH COUNTY, FLORIDA

REV. 04-10-97
 CAD FILE: MUSSWINT/WINTRPOS